

Product datasheet for **RC220302**

NRG1 (NM_013961) Human Tagged ORF Clone

Product data:

Product Type:	Expression Plasmids
Product Name:	NRG1 (NM_013961) Human Tagged ORF Clone
Tag:	Myc-DDK
Symbol:	NRG1
Synonyms:	ARIA; GGF; GGF2; HGL; HRG; HRG1; HRGA; NDF; SMDF
Mammalian Cell Selection:	Neomycin
Vector:	pCMV6-Entry (PS100001)
E. coli Selection:	Kanamycin (25 ug/mL)
ORF Nucleotide Sequence:	>RC220302 representing NM_013961 Red=Cloning site Blue=ORF Green=Tags(s)

TTTTGTAATACGACTCACTATAGGGCGGCCGGAATTCGTCGACTGGATCCGGTACCGAGGAGATCTGCC
GCC**CGATCGCC**

ATGTCCGAGCGCAAAGAAGGCAGAGGCAAAGGGAAGGGCAAGAAGAAGGAGCGAGGCTCCGGCAAGAAGC
CGGAGTCCGCGGGCGGCAGCCAGAGCCAGCCTTGCTCCCAATTGAAAGAGATGAAAAGCCAGGAATC
GGCTGCAGGTTCCAACTAGTCCTTCGGTGTGAAACCAGTTCTGAATACTCCTCTCAGATTCAAGTGG
TTCAAGAATGGGAATGAATTGAATCGAAAAACAACCACAAAATATCAAGATACAAAAAAGCCAGGGA
AGTCAGAACTTCGCATTAAACAAAGCATCACTGGCTGATTCTGGAGAGTATATGTGCAAAGTGATCAGCAA
ATTAGGAAATGACAGTGCCTCTGCAATATCACCATCGTGAATCAAACGAGATCATCACTGGTATGCCA
GCCTCAACTGAAGGAGCATATGTGTCTTCAGAGTCTCCATTAGAATATCAGTATCCACAGAAGGAGCAA
ATACTTCTTACATCTACATCTACATCCACCCTGGGACAAGCCATCTTGTAAAATGTGCGGAGAAGGAGAA
AACTTTCTGTGTGAATGGAGGGGAGTGCTTCATGGTGAAGACCTTTCAAACCCCTCGAGATACTTGTGC
AAGTGCCCAAATGAGTTTACTGGTGATCGCTGCCAAAACACGTAATGGCCAGCTTCTACAGTACGTCCA
CTCCCTTCTGTCTCTGCCTGAA

ACGCGTACGCGGCCGCTCGAGCAGAACTCATCTCAGAAGAGGATCTGGCAGCAAATGATATCCTGGATT
ACAAGGATGACGACGATAAGGTTTAA



[View online »](#)

Reconstitution Method:

1. Centrifuge at 5,000xg for 5min.
2. Carefully open the tube and add 100ul of sterile water to dissolve the DNA.
3. Close the tube and incubate for 10 minutes at room temperature.
4. Briefly vortex the tube and then do a quick spin (less than 5000xg) to concentrate the liquid at the bottom.
5. Store the suspended plasmid at -20°C. The DNA is stable for at least one year from date of shipping when stored at -20°C.

RefSeq: [NM_013961.2](#), [NP_039255.1](#)

RefSeq Size: 1703 bp

RefSeq ORF: 725 bp

Locus ID: 3084

Cytogenetics: 8p12

Domains: ig, IGc2, IG, EGF, EGF

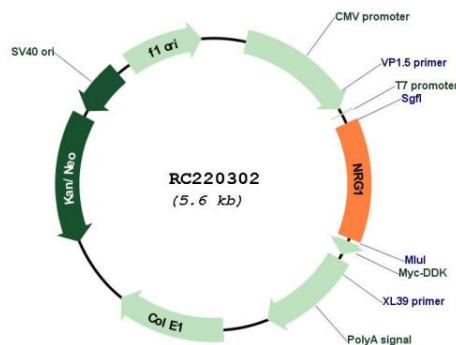
Protein Families: Druggable Genome, Secreted Protein, Transcription Factors, Transmembrane

Protein Pathways: ErbB signaling pathway

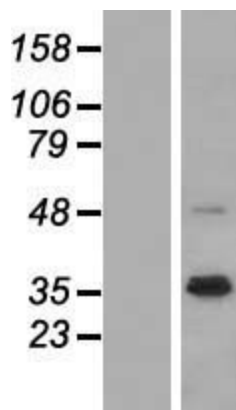
MW: 26 kDa

Gene Summary: The protein encoded by this gene is a membrane glycoprotein that mediates cell-cell signaling and plays a critical role in the growth and development of multiple organ systems. An extraordinary variety of different isoforms are produced from this gene through alternative promoter usage and splicing. These isoforms are expressed in a tissue-specific manner and differ significantly in their structure, and are classified as types I, II, III, IV, V and VI. Dysregulation of this gene has been linked to diseases such as cancer, schizophrenia, and bipolar disorder (BPD). [provided by RefSeq, Apr 2016]

Product images:



Circular map for RC220302



Western blot validation of overexpression lysate (Cat# [LY415555]) using anti-DDK antibody (Cat# [TA50011-100]). Left: Cell lysates from untransfected HEK293T cells; Right: Cell lysates from HEK293T cells transfected with [RC224945] using transfection reagent MegaTran 2.0 (Cat# [TT210002]).