

## Product datasheet for RC220301

### LMO7 (NM\_005358) Human Tagged ORF Clone

#### Product data:

Product Type:	Expression Plasmids
Product Name:	LMO7 (NM_005358) Human Tagged ORF Clone
Tag:	Myc-DDK
Symbol:	LMO7
Synonyms:	FBX20; FBXO20; LMO7b; LOMP
Mammalian Cell Selection:	Neomycin
Vector:	pCMV6-Entry (PS100001)
E. coli Selection:	Kanamycin (25 ug/mL)
ORF Nucleotide Sequence:	>RC220301 representing NM_005358 Red=Cloning site Blue=ORF Green=Tags(s)

TTTTGTAATACGACTCACTATAGGGCGGCCGGAATTCGTCGACTGGATCCGGTACCGAGGAGATCTGCC  
GCC**CGATCGCC**

ATGAAGAAAATTAGGATATGCCATATTTTACGTTTTACAGTTGGATGTCCTATGATGTTCTTTCCAGA  
GAACAGAGCTCGGAGCTCTGAAATTTGGAGGCAACTGATATGTGCTCATGTCTGCATCTGTGTGGGTTG  
GCTGTATCTCAGGGACAGAGTGTGCAGCAAAAAGATATAATTTTGAGGACTGAACAAAATTCAGGAAGG  
ACTATTCTCATTAAAGGCAGTAACAGAGAAGAATTTTGAACAAAAGATTTTCGAGCCTCTCTTGAAATG  
GTGTTCTGCTGTGTGATTTGATTAATAAGCTTAAACCTGGCGTCATTAAGAAGATCAATAGACTGTCTAC  
ACCAATAGCAGGATTGGATAATAAACGTTTTCTTGAAAGCTTGTGAACAGATTGGATTGAAAGAAGCC  
CAGCTTTTCCATCCTGGAGATCTACAGGATTTATCAAATCGAGTCACTGTCAAGCAAGAAGAGACTGACA  
GGAGAGTGAAAAATGTTTTGATAACATTGTACTGGCTGGGAAGAAAAGCACAAGCAACCCGTAATAA  
TGGTCCCCATCTTAATTTGAAAGCGTTTGAGAACTTTTAGGACAAGCACTGACGAAGGCACTCGAAGAC  
TCCAGCTTCTGAAAAGAAGTGGCAGGGACAGTGGCTACGGTGACATCTGGTGTCTGAACGTGGAGAAT  
TTCTTGCTCCTCAAGGCACCAATAAGAGAGAAGATTCCTTTGAAAGCTTGGACTCTTTGGGCTCGAGGTC  
ATTGACAAGCTGCTCCTCTGATATCACGTTGAGAGGGGGCGTGAAGTTTTGAAAGTGACACAGATTCCG  
GAATTTACATTTAAGATGCAGGATTATAATAAAGATGATATGTCGTATCGAAGGATTTCCGGCTGTTGAG  
CAAAGACTGCGTTACCCCTCAATCGTTTTTACCAACAAAAGTAGACAGCCATCCTATGTACCAGCACC  
TCTGAGAAAAGAAAAGCCAGACAACATGAGGATAACAGAAGAAGTTGGCAAGCCCGTTTATACAGAA  
GCAGATGGAACATTTTCAAGACTCTTTCAAAGATTTATGGTGAGAATGGGAGTAAGTCCATGAGTGATG  
TCAGCGCAGAAGATGTTCAAACCTTGCCTCAGCTGCGTTACGAGGAGATGCAGAAAATAAATCACAAAT  
AAAAGAACAAGATCAGAAATGGCAGGATGACCTTGCAAAATGGAAAGATCGTCGAAAAAGTTACACTTCA  
GATCTGCAGAAGAAAAAGAAGAGAGAAGAAATTTGAAAAGCAGGCACTTGAGAAGTCTAAGAGAAGCT  
CTAAGACGTTTAAGGAAATGCTGCAGGACAGGGAATCCAAAATCAAAGTCTACAGTCCGTCAAGAAG  
GAGAATGTATTCTTTGATGATGTGCTGGAGGAAGGAAAGCGACCCCTACAATGACTGTGTCAGAAGCA



[View online »](#)

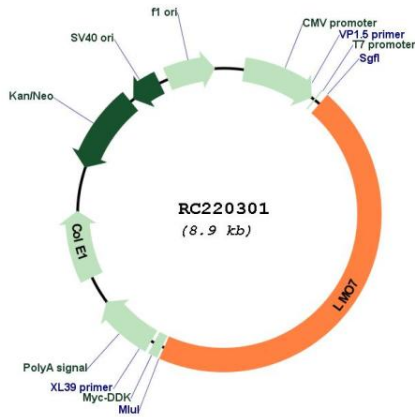
AGTTACCAGAGTGAGAGAGTAGAAGAGAAGGGAGCAACTTATCCTTCAGAAATCCCAAAGAAGATTCTA  
CCTTTTTGCAAAAAGAGAGGACCGTGTAACTGAAATTCAGCTTCTTCTCAAAGTCTGTGGAAGA  
ACAAAGCCAGCCTCTTTGTCTTCTCTGCGTTCACGGAGCACAAAATGGAATCACTTGTGTTTACGCT  
TCTCTCCCAGAAGTTACCGAAAAGTATACAGTCAGGTTAACATCTGTGGTCACACCAAGACCCTTTG  
GCTCTCAGACAAGGGGAATCTCATCTCCCAGATCTTACACGATGGATGATGCTTGGAAAGTAAATGG  
AGATATTGAAGACATTAAGAGAAGTCCAAACAATGTGGTCAGCACCCCTGCACCAAGCCCGGACGCAAGC  
CAACTGGCTTCAAGCTTATCTAGCCAGAAAAGGTAGCAGCAACAGAAGAAGATGTGACAAGGCTGCCCT  
CTCCTACATCCCCCTTCTCATCTCTTCCCAAGACCAGGCTGCCACTTCTAAAGCCACATTGTCTTCCAC  
ATCTGGTCTTGATTTAATGTCTGAATCTGGAGAAGGGAAATCTCCCACAAAAGAGAAGTCTCAAGATCC  
CAGGATCAGTTCAGTGATATGAGAATCAGCATAAACAGACGCCTGGGAAGAGTCTTGACTTTGGTTTA  
CAATAAAATGGGATATTCTGGGATCTTCGTAGCATCAGTTGAAGCAGGTAGCCAGCAGAAATTTCTCA  
GCTACAAGTAGATGATGAAATTATTGCTATTAACAACACCAAGTTTTATATAACGATTCAAAAGAGTGG  
GAGGAAGCCATGGCTAAGGCTCAAGAACTGGACACCTAGTGATGGATGTGAGGCGCTATGGAAAGGCTG  
GTTACCTGAAACAAAGTGGATTGATGCAACTTCTGGAATTTACAACAGAAAAATCTTCAATCTATC  
TGTAACAAGTATTTCTCCGAAAGCCTTACAGATTCTAATATTGAATCCAAAGAAATCAATGGAATTCAT  
GATGAAAGCAATGCTTTTGAATCAAAGCATCTGAATCCATTTCTTTGAAAAACTTAAAAAGGCGATCAC  
AATTTTTTGAACAAGGAAGCTCTGATTCGGTGGTTCCTGATCTTCCAGTTCACCATCAGTGCCCCGAG  
TCGCTGGGTGTGGGATCAAGAGGAGGAGCGGAAGCGGCAGGAGAGGTGGCAGAAGGAGCAGGACCGCCTA  
CTGCAGGAAAAATATCAACGTGAGCAGGAGAACTGAGGGAAGAGTGGCAAAGGGCCAAACAGGAGGCAG  
AGAGAGAGAATCCAAGTACTTGGATGAGGAACTGATGGTCTAAGCTCAAACAGCATGTCTCTGACCAC  
ACGGGAGCCCTCTTGGCACCTGGGAAGCTACCTGGAGTGAAGGGTCCAAGTCTTACAGCAGAGAAGGA  
ACCCGAGCAGGAGAAGAGGAGAGGAGACAGCCACAAGAGGAAGTTGTTTATGAGGACCAAGGAAAGAAGC  
CGCAGGATCAGCTTGTATTGAGAGAGAGAGAAATGGGAGCAACAGCTTCAAGGAAAGCAAGAGCAAAA  
GCGGCTTCAAGGCTGAGGCTGAGGAGCAGAAGCGTCTGCGGAGGAGCAGAAGCGCCAGGCAGAGATAGAG  
CGGAAAACATCAGTCAGAATATACCAGTACAGGAGGCCTGTTGATTCTATGATATACAAAGACAGAAG  
AAGCATCTCAGGTTTTCTTCTGGTGACAGGAATAAATCCAGATCTACTACTGAACTGGATGATTACTC  
CACAAATAAAAAATGAAACAATAAATATTTAGACCAAATGGGAACACGACCTCTTACAGAGGAGATCC  
AAGAAAGAACAAGTACCATCAGGAGCAGAATTGGAGAGGCAACAATCCTTCAAGAAATGAGGAAGAGAA  
CACCCCTTACAATGACAACAGCTGGATCCGACAGCGCAGTGCCAGTGTCAACAAAGAGCCTGTTAGTCT  
TCCTGGGATCATGAGAAGAGCGAATCTTTAGATAACCTGGACTCCCCCGATCCAATTCTTGGAGACAG  
CCTCCTTGGCTCAATCAGCCACAGGATTCTATGCTTCTCCTCTGTGCAAGACTTTAGTCGCCACCAC  
CTCAGCTGGTGTCCACATCAAACCGTGCCTACATGCGGAACCCCTCCTCCAGCGTCCCCCACCCTCAGC  
TGCTCCGTGAAGACCTCCACCACAGGTGTGGCCACCACACAGTCCCCCACCAGGAGCCATTCCCCT  
TCAGCTTACAGTCAGGCTCTCAGCTGCGTAACAGGTCAGTCAGTGGGAAGCGCATATGCTCCTACTGCA  
ATAACATCTGGGCAAAGGAGCCGCCATGATCATCGAGTCCCTGGGTCTTTGTTATCATTGCAATGTTT  
TAAGTGTGTTGCCTGTGAGTGTGACCTCGGAGGCTCTTCTCAGGAGCTGAAGTCAGGATCAGAAACCAC  
CAACTGTACTGCAACGACTGCTATCTCAGATTCAAATCTGGACGGCCAACCGCCATG

ACGCGTACGCGGCCGCTCGAGCAGAACTCATCTCAGAAGAGGATCTGGCAGCAAATGATATCCTGGATT  
ACAAGGATGACGACGATAAGGTTTAA

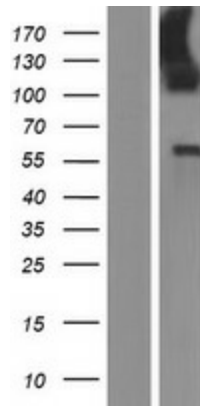


<b>OTI Disclaimer:</b>	Due to the inherent nature of this plasmid, standard methods to replicate additional amounts of DNA in E. coli are highly likely to result in mutations and/or rearrangements. Therefore, OriGene does not guarantee the capability to replicate this plasmid DNA. Additional amounts of DNA can be purchased from OriGene with batch-specific, full-sequence verification at a reduced cost. Please contact our customer care team at <a href="mailto:custsupport@origene.com">custsupport@origene.com</a> or by calling 301.340.3188 option 3 for pricing and delivery.
	The molecular sequence of this clone aligns with the gene accession number as a point of reference only. However, individual transcript sequences of the same gene can differ through naturally occurring variations (e.g. polymorphisms), each with its own valid existence. This clone is substantially in agreement with the reference, but a complete review of all prevailing variants is recommended prior to use. <a href="#">More info</a>
<b>OTI Annotation:</b>	This clone was engineered to express the complete ORF with an expression tag. Expression varies depending on the nature of the gene.
<b>Components:</b>	The ORF clone is ion-exchange column purified and shipped in a 2D barcoded Matrix tube containing 10ug of transfection-ready, dried plasmid DNA (reconstitute with 100 ul of water).
<b>Reconstitution Method:</b>	<ol style="list-style-type: none"> <li>1. Centrifuge at 5,000xg for 5min.</li> <li>2. Carefully open the tube and add 100ul of sterile water to dissolve the DNA.</li> <li>3. Close the tube and incubate for 10 minutes at room temperature.</li> <li>4. Briefly vortex the tube and then do a quick spin (less than 5000xg) to concentrate the liquid at the bottom.</li> <li>5. Store the suspended plasmid at -20°C. The DNA is stable for at least one year from date of shipping when stored at -20°C.</li> </ol>
<b>RefSeq:</b>	<a href="#">NM_005358.5</a> , <a href="#">NP_005349.3</a>
<b>RefSeq Size:</b>	7235 bp
<b>RefSeq ORF:</b>	4050 bp
<b>Locus ID:</b>	4008
<b>UniProt ID:</b>	<a href="#">Q8WWI1</a>
<b>Cytogenetics:</b>	13q22.2
<b>Domains:</b>	PDZ, LIM
<b>Protein Pathways:</b>	Adherens junction
<b>MW:</b>	153.5 kDa
<b>Gene Summary:</b>	This gene encodes a protein containing a calponin homology (CH) domain, a PDZ domain, and a LIM domain, and may be involved in protein-protein interactions. Several alternatively spliced transcript variants encoding different isoforms have been found for this gene, however, the full-length nature of some variants is not known. [provided by RefSeq, Jan 2009]

Product images:



Circular map for RC220301



Western blot validation of overexpression lysate (Cat# [LY417355]) using anti-DDK antibody (Cat# [TA50011-100]). Left: Cell lysates from untransfected HEK293T cells; Right: Cell lysates from HEK293T cells transfected with RC220301 using transfection reagent MegaTran 2.0 (Cat# [TT210002]).