

Product datasheet for **RC220296**

BTNL9 (NM_152547) Human Tagged ORF Clone

Product data:

Product Type:	Expression Plasmids
Product Name:	BTNL9 (NM_152547) Human Tagged ORF Clone
Tag:	Myc-DDK
Symbol:	BTNL9
Synonyms:	BTN3; BTN8; VDLS1900
Mammalian Cell Selection:	Neomycin
Vector:	pCMV6-Entry (PS100001)
E. coli Selection:	Kanamycin (25 ug/mL)



[View online »](#)

ORF Nucleotide Sequence:

>RC220296 representing NM_152547
 Red=Cloning site Blue=ORF Green=Tags(s)

TTTTGTAATACGACTCACTATAGGGCGGCCGGAATTCGTCGACTGGATCCGGTACCGAGGAGATCTGCC
 GCC**CGGATCGCC**

ATGGTGGACCTCTCAGTCTCCCCAGACTCCTTGAAGCCAGTATCGCTGACCAGCAGTCTTGCTTCTCCTCA
 TGCACCTCCTCCTCCTTACGCTGGGGAGCCGAGCTCAGAGGTCAAGGTGCTAGGCCCTGAGTATCCCAT
 CCTGGCCCTCGTCGGGGAGGAGGTGGAGTTCCCGTGCCACCTATGGCCACAGCTGGATGCCAGCAAATG
 GAGATCCGCTGGTTCCGGAGTCAGACCTTCAATGTGGTACACCTGTACCAGGAGCAGCAGGAGCTCCCTG
 GCAGGCAGATGCCGGCGTCCGGAACAGGACCAAGTTGGTCAAGGACGACATCGCTATGGCAGCGTGGT
 CCTGCAGCTTACAGCATCATCCCCTCTGACAAGGCACATATGGCTGCCGCTTCCACTCCGACAACCTC
 TCTGGCGAAGCTCTCTGGGAAGTGGAGGTAGCAGGGCTGGGCTCAGACCCTCACCTCTCCCTTGAGGGCT
 TCAAGGAAGGAGGCATTCAGCTGAGGCTCAGATCCAGTGGCTGGTACCCCAAGCCTAAGGTTCAAGTGGAG
 AGACCACAGGGACAGTGCCTGCCTCCAGAGTTTGAAGCCATCGTCTGGGATGCCAGGACCTGTTCACT
 CTGGAAACATCTGTGGTTGTCCGAGCGGAGCCCTCAGCAATGTGTCCGTCTCCATCCAGAATCTCCTCT
 TGAGCCAGAAGAAAGAGTTGGTGGTCCAGATAGCAGACGTGTTCTGTACCCGGAGCCTCTGCGTGGAAAGAG
 CGCGTTTGTGCGGACCCTGCCGCTGCTGTTGGTCTCGCGGCGCTGGCGCTGGGCGTCTCCGGAAGCAG
 CGGAGAAGCCGAGAAAAGCTGAGGAAGCAGGCGGAGAAGAGACAAGAACTACTGCAGAGCTGGAAA
 AGCTTCAGACAGAGCTTGACTGGAGACGGGCTGAAGGCCAGGCTGAGTGGAGAGCAGCCAAAAATATGC
 AGTGGATGTGACGCTGGACCCGGCTCGGCGCACCCAGCCTGGAGGTGTGGAGGATGGCAAGAGCGTG
 TCTTCCCGCGGGCGCCGAGCCCGGCGCTGGCCACCCGACGCGTTCTCGGAGCAGACGTGCGCGC
 TGAGCCTGGAGCGGTTCTCCGCGGCGCCACTACTGGAGGTGCACGTGGGCGCGCCGCGCTGGTT
 CCTGGGCGCTGCCTGGCCGCGTGCAGCGCGGCGCTGCGCGCTGAGCCCTGCGGCGGCTACTGG
 GTGCTGGGCTGTGGAACGGCTGCGAGTACTTCTGCTGCCCCGACCCGCTGCGGCTCACCTGCGCG
 TGCCCCGCGGCGCTGGGCTTCTCTGGACTACGAGGCCGAGAGCTGTCTTCTTCAACGTGTCCGA
 CGGCTCCACATCTTACCTTCCACGACACCTTCTCGGGCGGCTCTGTGCGTACTTCAGGCCAGGGCC
 CACGACGGCGGAACATCCGGATCCCCTGACCATCTGCCGCTGCGGTTAGAGGGACGGGCTCCCCG
 AAGAGAACGACAGTGACACCTGGCTACAGCCCTATGAGCCGCGGACCCCGCCTGGACTGGTGG

ACGCGTACGCGGCGGCTCGAGCAGAACTCATCTCAGAAGAGGATCTGGCAGCAAATGATATCTGGATT
 ACAAGGATGACGACGATAAGGTTTAA

Protein Sequence:

>RC220296 representing NM_152547
 Red=Cloning site Green=Tags(s)

MVDLSVSPDSLKPVSLTSSLVFLMHL LLLQPGEPSSEVKVLGPEYPILALVGEEVEFPCHLWPQLDAQQM
 EIRWFRSQTFNVVHLYEQQELPGRQMPAFNRNRTKLVKDDIAYGSVVLQLHSIIPSDKGTYGCRFHSDNF
 SGEALWELEVAGLGDPHLSLEGFKEGGIQLRLRSSGWYPKPKVQWRDHQGCCLPPEFEAIWDAQDLFS
 LETSVVVRAGALSNVSVSIQNLLL SQQKELVVQIADVFVPGASAWKSAFVATLPLLLVLAALALGVLKQ
 RRSREKLRKQAEKRQEKL TAELEKLQTELDWRAEGQAEWRAAQKYAVDVTLDPASAHP SLEVSEDKSV
 SSRGAPPGPAPGHPQRFSEQTCALSLERFSAGRHYWEVHVGRRSRWF LGACLA AVPRAGPARL SPAAGYW
 VLGLWNGCEYFVLAPHRVALTLRVPPRRLGVFLDYEAGEL SFFNVSDGSHIFTFHDTFSGALCAYFRPRA
 HDGGEHPDPL TICPLPVRGTGVPEENDS DTWLQPYEPADPALDWW

TRTRPLEQKLISEEDLAANDILDYKDDDDKV

Chromatograms:

https://cdn.origene.com/chromatograms/mk8019_g05.zip

Restriction Sites:

Sgfl-Mlul

Cloning Scheme:


ACCN: NM_152547

ORF Size: 1605 bp

OTI Disclaimer: The molecular sequence of this clone aligns with the gene accession number as a point of reference only. However, individual transcript sequences of the same gene can differ through naturally occurring variations (e.g. polymorphisms), each with its own valid existence. This clone is substantially in agreement with the reference, but a complete review of all prevailing variants is recommended prior to use. [More info](#)

OTI Annotation: This clone was engineered to express the complete ORF with an expression tag. Expression varies depending on the nature of the gene.

Components: The ORF clone is ion-exchange column purified and shipped in a 2D barcoded Matrix tube containing 10ug of transfection-ready, dried plasmid DNA (reconstitute with 100 ul of water).

- Reconstitution Method:**
1. Centrifuge at 5,000xg for 5min.
 2. Carefully open the tube and add 100ul of sterile water to dissolve the DNA.
 3. Close the tube and incubate for 10 minutes at room temperature.
 4. Briefly vortex the tube and then do a quick spin (less than 5000xg) to concentrate the liquid at the bottom.
 5. Store the suspended plasmid at -20°C. The DNA is stable for at least one year from date of shipping when stored at -20°C.

RefSeq: [NM_152547.5](#)

RefSeq Size: 3479 bp

RefSeq ORF: 1608 bp

Locus ID: 153579

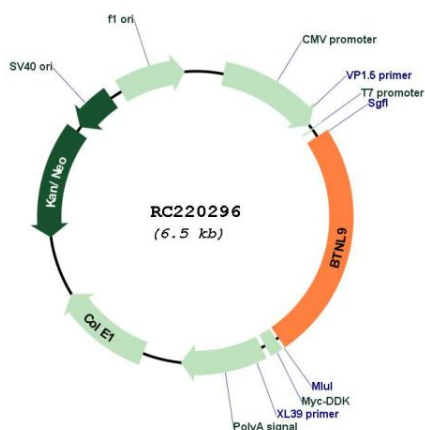
UniProt ID: [Q6UXG8](#)

Cytogenetics: 5q35.3

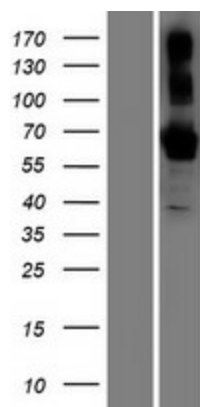
Protein Families: Druggable Genome, Transmembrane

MW: 59.5 kDa

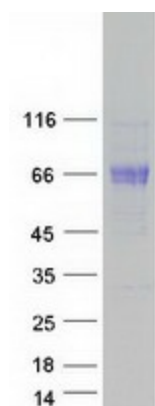
Product images:



Circular map for RC220296



Western blot validation of overexpression lysate (Cat# [LY407458]) using anti-DDK antibody (Cat# [TA50011-100]). Left: Cell lysates from untransfected HEK293T cells; Right: Cell lysates from HEK293T cells transfected with RC220296 using transfection reagent MegaTran 2.0 (Cat# [TT210002]).



Coomassie blue staining of purified BTNL9 protein (Cat# [TP320296]). The protein was produced from HEK293T cells transfected with BTNL9 cDNA clone (Cat# RC220296) using MegaTran 2.0 (Cat# [TT210002]).