

Product datasheet for **RC220289**

GM CSF Receptor alpha (CSF2RA) (NM_172246) Human Tagged ORF Clone

Product data:

Product Type:	Expression Plasmids
Product Name:	GM CSF Receptor alpha (CSF2RA) (NM_172246) Human Tagged ORF Clone
Tag:	Myc-DDK
Symbol:	GM CSF Receptor alpha
Synonyms:	alphaGMR; CD116; CDw116; CSF2R; CSF2RAX; CSF2RAY; CSF2RX; CSF2RY; GM-CSF-R-alpha; GMCSFR; GMCSFR-alpha; GMR; GMR-alpha; SMDP4
Mammalian Cell Selection:	Neomycin
Vector:	pCMV6-Entry (PS100001)
E. coli Selection:	Kanamycin (25 ug/mL)



[View online »](#)

ORF Nucleotide Sequence:

>RC220289 representing NM_172246
 Red=Cloning site Blue=ORF Green=Tags(s)

TTTTGTAATACGACTCACTATAGGGCGGCCGGAATTCGTCGACTGGATCCGGTACCGAGGAGATCTGCC
 GCC**GCGATCGCC**

ATGCTTCTCCTGGTGACAAGCCTTCTGCTCTGTGAGTTACCACACCCAGCATTCTCCTGATCCCAGAGA
 AATCGGATCTGCGAACAGTGGCACCAGCCTCTAGTCTCAATGTGAGGTTTGACTCCAGGACGATGAATTT
 AAGCTGGGACTGCCAAGAAAACACAACCTTCAGCAAGTGTTCCTTAAGTACAAGAAAGAACAGAGTCGTG
 GAACCCAGGCTCAGTAACAACGAATGTTTCGTGCACATTTTCGTGAAATTTGTCTGCATGAAGGAGTCACAT
 TTGAGGTTACGTGAATACTAGTCAAAGAGGATTTCAACAGAACTGCTTTATCCAAATTCAGGAAGGGA
 GGGTACCGCTGCTCAGAATTTCTCTGTTTCATCTACAATGCGGATTTAATGAACGTACCTGGGCGAGG
 GGTCCGACGGCCCCCGTACGTCCAGTATTTTTGTACATACGAACTCAAAGAGAAGGAGGGAGATCC
 GGTGTCTTATTACATAAAGACTCAGGAACCCATGTGGGATGTCACCTGGATAACCTGTCAGGATTAAC
 GTCTCGCAATTACTTTCTGGTTAACGGAACCCAGCCGAGAAATTTGGCATCCAATTTTATTGATTCATTTTG
 GACACAAAAGAAAATAGAAGATTCAACCTCCCAGCAATGTCACCGTACGTTGCAACACGACGCACTGCC
 TCGTACGGTGAAACAGCCCAGGACCTATCAGAAGCTGTCGTACCTGGACTTTCAGTACCAGCTGGACGT
 CCACAGAAAGAATACCCAGCCTGGCAGGAAAACCTACTGATTAATGTTTCTGGTGATTTGGAAAATAGA
 TACAATTTCCAAGCTCTGAGCCAGAGCAAAACAGTGTGAAGATCAGAGCTGCAGACGTCCGCATCT
 TGAATTTGAGCTCCTGGAGTGAAGCCATTGAATTTGATCATCTGGGAGGAATTCACCCAGAGGAAGGGA
 AAGGCTACCGGAAGAGGTCTTGACCGTGAAGGAAATACCTGAGACCCAGAGGGTGTAGGAATGGCATG
 GACATCTCCGCTCCGCGACACGGGGAAGTGTTCCTTGATGATGCTGTGAACCTTTATATCATTTTCT
 ATGTTTTTATT

ACGCGTACGCGGCCGCTCGAGCAGAACTCATCTCAGAAGAGGATCTGGCAGCAAATGATATCCTGGATT
 ACAAGGATGACGACGATAAGGTTTAA

Protein Sequence:

>RC220289 representing NM_172246
 Red=Cloning site Green=Tags(s)

MLLLVTSLLLCELPHPAFLLIPEKSDLRTVAPASSLNVRFDSRTMNLSDWCQENTTFSKCFLTDKKNRVV
 EPRLSNNECSCTFREICLHEGVTFEVHVNTSQRGFQKLLYPNSGREGTAAQNFSCFIYNADLMNCTWAR
 GPTAPRDVQYFLYIRNSKRREIRCPYYIQDSGTHVGCHLDNLSGLTSRNYFLVNGTSREIGIQFFDSL
 DTKKIERFNPPSNVTVRCNTTHCLVRWKQPRTYQKLSYLDYQYQLDVHRKNTQPGTENLLINVSVDLENR
 YNFPSSSEPRAKHSVKIRAADVRLNWSWSEAIIEFDHLGGIHPGRERLPRRGLDREGNYLRPRGCRNGM
 DISASATRGNCFLDDAVNLYIIFYVFI

TRTRPLEQKLISEEDLAANDILDYKDDDDKV

Chromatograms:

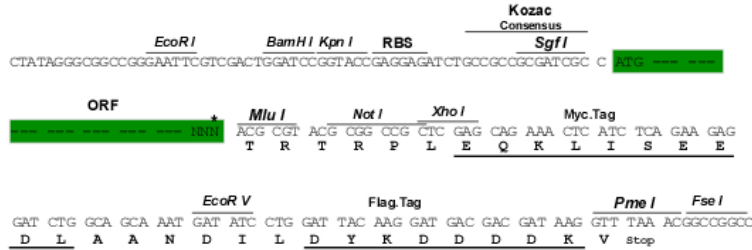
https://cdn.origene.com/chromatograms/mk8055_g11.zip

Restriction Sites:

Sgfl-Mlul

Cloning Scheme:

Cloning sites used for ORF Shutting:



* The last codon before the Stop codon of the ORF

ACCN: NM_172246

ORF Size: 1131 bp

OTI Disclaimer: The molecular sequence of this clone aligns with the gene accession number as a point of reference only. However, individual transcript sequences of the same gene can differ through naturally occurring variations (e.g. polymorphisms), each with its own valid existence. This clone is substantially in agreement with the reference, but a complete review of all prevailing variants is recommended prior to use. [More info](#)
OTI Annotation: This clone was engineered to express the complete ORF with an expression tag. Expression varies depending on the nature of the gene.

Components: The ORF clone is ion-exchange column purified and shipped in a 2D barcoded Matrix tube containing 10ug of transfection-ready, dried plasmid DNA (reconstitute with 100 ul of water).

Reconstitution Method:

1. Centrifuge at 5,000xg for 5min.
2. Carefully open the tube and add 100ul of sterile water to dissolve the DNA.
3. Close the tube and incubate for 10 minutes at room temperature.
4. Briefly vortex the tube and then do a quick spin (less than 5000xg) to concentrate the liquid at the bottom.
5. Store the suspended plasmid at -20°C. The DNA is stable for at least one year from date of shipping when stored at -20°C.

RefSeq: [NM_172246.4](#)
RefSeq Size: 1665 bp

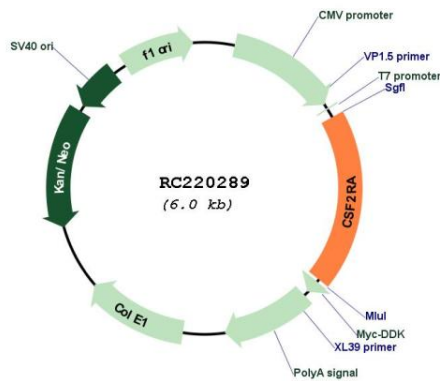
RefSeq ORF: 1134 bp

Locus ID: 1438

UniProt ID: [P15509](#)

Cytogenetics:	X;Y
Protein Families:	Druggable Genome, Secreted Protein, Transmembrane
Protein Pathways:	Cytokine-cytokine receptor interaction, Hematopoietic cell lineage, Jak-STAT signaling pathway, Pathways in cancer
MW:	41.4 kDa
Gene Summary:	The protein encoded by this gene is the alpha subunit of the heterodimeric receptor for colony stimulating factor 2, a cytokine which controls the production, differentiation, and function of granulocytes and macrophages. The encoded protein is a member of the cytokine family of receptors. This gene is found in the pseudoautosomal region (PAR) of the X and Y chromosomes. Multiple transcript variants encoding different isoforms have been found for this gene, with some of the isoforms being membrane-bound and others being soluble. [provided by RefSeq, Jul 2008]

Product images:



Circular map for RC220289