

Product datasheet for RC220288

SLC35A2 (NM_005660) Human Tagged ORF Clone

Product data:

Product Type:	Expression Plasmids
Product Name:	SLC35A2 (NM_005660) Human Tagged ORF Clone
Tag:	Myc-DDK
Symbol:	SLC35A2
Synonyms:	CDG2M; CDGX; UDP-Gal-Tr; UGALT; UGAT; UGT; UGT1; UGT2; UGTL
Mammalian Cell Selection:	Neomycin
Vector:	pCMV6-Entry (PS100001)
E. coli Selection:	Kanamycin (25 ug/mL)
ORF Nucleotide Sequence:	>RC220288 representing NM_005660 Red=Cloning site Blue=ORF Green=Tags(s)

TTTTGTAATACGACTCACTATAGGGCGGCCGGAATTCGTCGACTGGATCCGGTACCGAGGAGATCTGCC
GCC**CGATCGCC**

ATGGCAGCGGTTGGGGCTGGTGGTTCCACCGCGGCCCGGGCCAGGGGCGGTTCCGCGGGTGCATTGG
AGCCGGGACCGCCAGTGC GGCTCACAGGCGCTGAAGTACATATCCCTAGCTGTGCTGGTGGTCCAGAA
TGCTCCCTCATCTCAGCATCCGCTACGCCGACGTTGCCAGGGGACCGCTTCTTTGCCACCACTGCT
GTGGTCATGGCGAAGTGTCAAAGGTCTCACCTGCCTGCTGCTCTTCGCACAGAAGAGGGTAAACG
TGAAGCACCTGGTCTCTTCCCTCATGAGGCTGTCTGGTGCAGTATGTGGACACGCTCAAGCTCGCAGT
GCCTCTCTCATCTACACCTGCAGAATAACCTCCAGTATGTTGCCATCTCTAACCTACCGACTGCCACT
TTCCAGGTGACATACCAGCTGAAGATCCTGACCACAGCGCTGTTCTCCGTGCTCATGCTGAATCGCAGCC
TTTCCCGGCTGCAGTGGGCTCCCTGCTGCTCCTTCACTGGCGTCGCCATTGTCCAGGCACAGCAAGC
CGGTGGGGGAGGCCACGGCCACTGGATCAGAACCCTGGGGCAGGCTGGCAGCCGTCGTGGCCTCCTGT
CTCTCCTCCGGCTTCGCAGGTGTCTACTTTGAGAAGATCTCAAAGGCAGCTCAGGCTCCGTGTGGCTGC
GCAACCTGCAACTGGGCTCTTCGGCACAGCACTGGGCTGGTGGGGCTCTGGTGGGCTGAGGGTACCGC
CGTGGCCACCCGTGGTTCTTTTTGGGTACACACCTGCTGTCTGGGGCTGGTGGTCAACCAGGCTTC
GGCGGGCTACTGGTGGCTGGTTGTCAAGTACGCTGACAAATCCTCAAGGGCTTGGCCACCTCCCTGT
CCATTGTGCTGTCCACTGTTGCCTCCATTGCCTCTTTGGCTTCCACGTGGACCCATTATTGGCCCTGG
CGCTGGACTCGTATTGGTGTCTACCTCTACAGCCTTCCCCGAGGTGCAGCCAAAGCCATAGCCTCT
GCCTCTGCCTCCGCCTCCGGGCCCTGCGTTACCAGCAGCCTCCCGGGCAGCCACCACCACCGCAGCTGT
CTTCCACCGTGGAGACCTCATCACGGAGCCCTTCTGCCAAAGTTGCTCACCAGGTGAAGGGTTCC

ACGCGTACGCGGCCGCTCGAGCAGAACTCATCTCAGAAGAGGATCTGGCAGCAATGATATCCTGGATT
ACAAGGATGACGACGATAAGGTTTAA



[View online >](#)

Protein Sequence: >RC220288 representing NM_005660
Red=Cloning site Green=Tags(s)

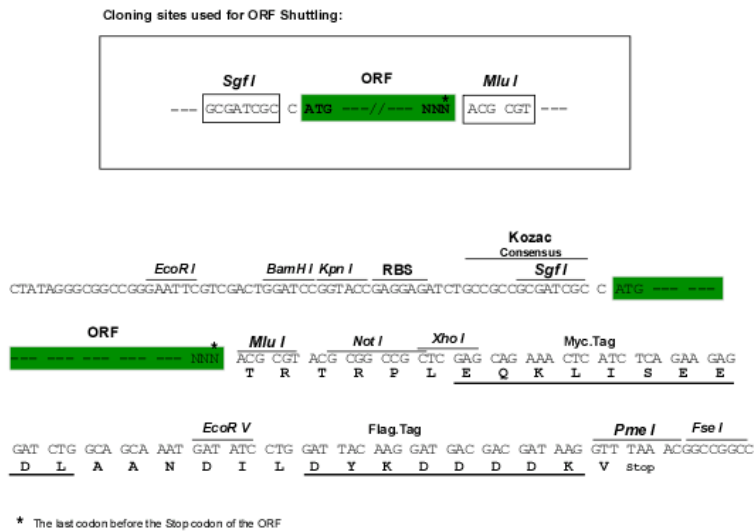
MAAVGAGGSTAAPGPGAVSAGALEPGTASAAHRRKLYISLAVLVVQNASLILSIRYARTLPGDRFFATTA
 VVMAEVLKGLTCLLLFAQKRGNVKHLVFLHEAVLVQYVDTLKLAVPSLIYTLQNNLQYVAISNLPAAAT
 FQVTYQLKILTTALFVSLMLNRSLSRLQWASLLLLFTGVAIVQAQQAGGGGPRPLDQNPAGLAADVASC
 LSSGFAGVYFEKILKSSGVSWLRNLQLGLFGTALGLVGLWVAEGTAVATRGFFGYTPAVWGVVLNQAF
 GGLLVAVVVKYADNLIKGFATSLIVLSTVASIRLFGFHVDPFLFALGAGLVIGAVYLYSLPRGAAKAIAS
 ASASASGPCVHQPPGQPPPPQLSSHRGDLITEPFLPKLLTKVKGS

TRTRPLEQKLISEEDLAANDILDYKDDDDKV

Chromatograms: https://cdn.origene.com/chromatograms/mg4844_g01.zip

Restriction Sites: SgfI-MluI

Cloning Scheme:



ACCN: NM_005660

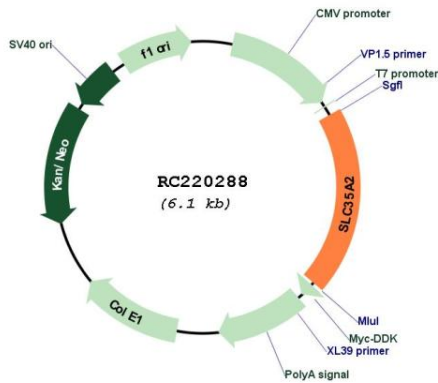
ORF Size: 1188 bp

OTI Disclaimer: Due to the inherent nature of this plasmid, standard methods to replicate additional amounts of DNA in E. coli are highly likely to result in mutations and/or rearrangements. Therefore, OriGene does not guarantee the capability to replicate this plasmid DNA. Additional amounts of DNA can be purchased from OriGene with batch-specific, full-sequence verification at a reduced cost. Please contact our customer care team at custsupport@origene.com or by calling 301.340.3188 option 3 for pricing and delivery.

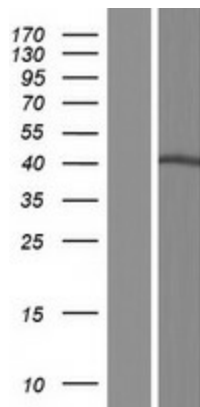
The molecular sequence of this clone aligns with the gene accession number as a point of reference only. However, individual transcript sequences of the same gene can differ through naturally occurring variations (e.g. polymorphisms), each with its own valid existence. This clone is substantially in agreement with the reference, but a complete review of all prevailing variants is recommended prior to use. [More info](#)

OTI Annotation:	This clone was engineered to express the complete ORF with an expression tag. Expression varies depending on the nature of the gene.
Components:	The ORF clone is ion-exchange column purified and shipped in a 2D barcoded Matrix tube containing 10ug of transfection-ready, dried plasmid DNA (reconstitute with 100 ul of water).
Reconstitution Method:	<ol style="list-style-type: none">1. Centrifuge at 5,000xg for 5min.2. Carefully open the tube and add 100ul of sterile water to dissolve the DNA.3. Close the tube and incubate for 10 minutes at room temperature.4. Briefly vortex the tube and then do a quick spin (less than 5000xg) to concentrate the liquid at the bottom.5. Store the suspended plasmid at -20°C. The DNA is stable for at least one year from date of shipping when stored at -20°C.
RefSeq:	NM_005660.3
RefSeq Size:	1451 bp
RefSeq ORF:	1191 bp
Locus ID:	7355
UniProt ID:	P78381
Cytogenetics:	Xp11.23
Protein Families:	Transmembrane
MW:	41.1 kDa
Gene Summary:	<p>This gene encodes a member of the nucleotide-sugar transporter family. The encoded protein is a multi-pass membrane protein. It transports UDP-galactose from the cytosol into Golgi vesicles, where it serves as a glycosyl donor for the generation of glycans. Mutations in this gene cause congenital disorder of glycosylation type II_m (CDG2M). Multiple alternatively spliced transcript variants encoding distinct isoforms have been found for this gene. [provided by RefSeq, Oct 2014]</p>

Product images:



Circular map for RC220288



Western blot validation of overexpression lysate (Cat# [LY417151]) using anti-DDK antibody (Cat# [TA50011-100]). Left: Cell lysates from untransfected HEK293T cells; Right: Cell lysates from HEK293T cells transfected with RC220288 using transfection reagent MegaTran 2.0 (Cat# [TT210002]).