

Product datasheet for **RC220280**

HIC5 (TGFB111) (NM_001042454) Human Tagged ORF Clone

Product data:

Product Type:	Expression Plasmids
Product Name:	HIC5 (TGFB111) (NM_001042454) Human Tagged ORF Clone
Tag:	Myc-DDK
Symbol:	HIC5
Synonyms:	ARA55; HIC-5; HIC5; TSC-5
Mammalian Cell Selection:	Neomycin
Vector:	pCMV6-Entry (PS100001)
E. coli Selection:	Kanamycin (25 ug/mL)



[View online »](#)

ORF Nucleotide Sequence:

>RC220280 representing NM_001042454
 Red=Cloning site Blue=ORF Green=Tags(s)

TTTTGTAATACGACTCACTATAGGGCGGCCGGAATTCGTCGACTGGATCCGGTACCGAGGAGATCTGCC
 GCC**CGGATCGCC**

ATGGAGGACCTGGATGCCCTGCTCTGACCTGGAGACTACCACCTCGCACATGCCAAGGTCAGGGGCTC
 CCAAAGAGCGCCCTGCGGAGCCTCTCACCCCTCCCCATCCTATGGCCACCAGCCACAGACAGGGTCTGG
 GGAGTCTTCAGGAGCCTCGGGGACAAGGACCCTGTACAGCACGGTATGCAAGCCTCGGTCCCAAAG
 CCTGCAGCCCCGGCGGCCCTCCATTCTCTCTCCAGCGGTGTCTTGGGTACCGGGCTCTGTGAGCTAG
 ATCGGTTGCTTCAGGAATTAATGCCACTCAGTTCAACATCACAGATGAAATCATGTCTCAGTTCCCATC
 TAGCAAGTGGCTTCAGGAGAGCAGAAGGAGGACCAGTCTGAAGATAAGAAAAGACCAGCCTCCCTTCC
 AGCCCGTCTCTGGCCTCCAAAGGCTTCTGCCACCTCAGCCACTCTGGAGCTGGATAGACTGATGGCCT
 CACTCTCTGACTCCGCGTTCAAACCATCTCCAGCCTCTGGGCAACTCAGCCACCGGTGGTGAAGCTC
 CACAAATGAGGGTCCCCATCCCACCAGAGCCGACTGGCAAGGGCAGCCTAGACACCATGCTGGGGCTG
 CTGCAGTCCGACCTCAGCCGCGGGGTGTCCACCCAGGCCAAAGGCCTCTGTGGCTCCTGCAATAAAC
 CTATTGCTGGGCAAGTGGTGACGGCTCTGGGCCGCGCCTGGCACCCGAGCACTTCGTTTGGGAGGCTG
 TTCCACCGCCCTGGGAGGAGCAGCTTCTTCGAGAAGGATGGAGCCCTTCTGCCCGAGTGCTACTTT
 GAGCGTCTTCGCAAGATGTGGCTTCTGCAACCAGCCATCCGACACAAGATGGTGACCGCCTTGGGCA
 CTCACTGGCACCCAGAGCATTCTGTGCTGCTCAGTTGCGGGGAGCCCTTCGGAGATGAGGGTTTCCACGA
 GCGCGAGGGCCGCCCTACTGCCCGGGACTTCTGCAGCTGTTCGCCCCGCGTGCAGGGTCCAG
 GGCCCCATCCTGGATAACTACATCTCGGCGCTCAGCGCGCTTGGCACCCGGACTGTTTCGTCTGCAGGG
 AATGCTTCGCGCCCTTCTCGGGAGGCGAGTTTTTCGAGCACGAGGGCCGCCGTTGTGCGAGAACCACT
 CCACGCACGACGCGGCTCGCTGTGCGCCACGTGTGGCCTCCCTGTGACCGGCGCTGCGTGTGCGCCCTG
 GGTGCGCGCTTCCACCCGAGCACTTACATGCACCTTCTGCCTGCGCCCGCTACCAAGGGTCTTCC
 AGGAGCGCGCGCAAGCCCTACTGCCAGCCCTGCTTCTGAAGCTTTCGGC

ACGCGTACGCGGCCGCTCGAGCAGAACTCATCTCAGAAGAGGATCTGGCAGCAAATGATATCCTGGATT
 ACAAGGATGACGACGATAAGGTTTAA

Protein Sequence:

>RC220280 representing NM_001042454
 Red=Cloning site Green=Tags(s)

MEDLDALLSDLETTTSHMPRSGAPKERPAEPLTPPPSYGHQPQTGSGESSGASGDKDHLYSTVCKPRSPK
 PAAPAAPPFSSSSGVLGTGLCELDRLQLLNATQFNITDEIMSQFPSSKVASGEQKEDQSEDKKRPSLPS
 SPSPGLPKASATSATLELDRLMASLSDFRVQNHLPASGPTQPPVVSSTNEGSPSPPEPTGKGLDMLGL
 LQSDLRRGVPTQAKGLCGSCNKPIAGQVVLTALGRAWHPEHFVCGGCASTALGSSFFEKDGAPFCPECYF
 ERFSPRCGFCNQPIRHKMVTALGTHWPEHFCCVSCGEPFGDEGFHEREGRPYCRRDFLQLFAPRCQGCQ
 GPILDNYISALSALWHPDCFVCRECFAPFSGGSFFEHEGRPLCENHFHARRGSLCATCGLPVTGRCVSAL
 GRRFHPDHFTCTFCLRPLTKGSFQERAGKPYCQPCFLKLF

TRTRPLEQKLISEEDLAANDILDYKDDDDKV

Chromatograms:

https://cdn.origene.com/chromatograms/mk8061_e07.zip

Restriction Sites:

Sgfl-Mlul

Cloning Scheme:


ACCN: NM_001042454

ORF Size: 1383 bp

OTI Disclaimer: The molecular sequence of this clone aligns with the gene accession number as a point of reference only. However, individual transcript sequences of the same gene can differ through naturally occurring variations (e.g. polymorphisms), each with its own valid existence. This clone is substantially in agreement with the reference, but a complete review of all prevailing variants is recommended prior to use. [More info](#)

OTI Annotation: This clone was engineered to express the complete ORF with an expression tag. Expression varies depending on the nature of the gene.

Components: The ORF clone is ion-exchange column purified and shipped in a 2D barcoded Matrix tube containing 10ug of transfection-ready, dried plasmid DNA (reconstitute with 100 ul of water).

Reconstitution Method:

1. Centrifuge at 5,000xg for 5min.
2. Carefully open the tube and add 100ul of sterile water to dissolve the DNA.
3. Close the tube and incubate for 10 minutes at room temperature.
4. Briefly vortex the tube and then do a quick spin (less than 5000xg) to concentrate the liquid at the bottom.
5. Store the suspended plasmid at -20°C. The DNA is stable for at least one year from date of shipping when stored at -20°C.

RefSeq: [NM_001042454.3](#)

RefSeq Size: 1794 bp

RefSeq ORF: 1386 bp

Locus ID: 7041

UniProt ID: [O43294](#)

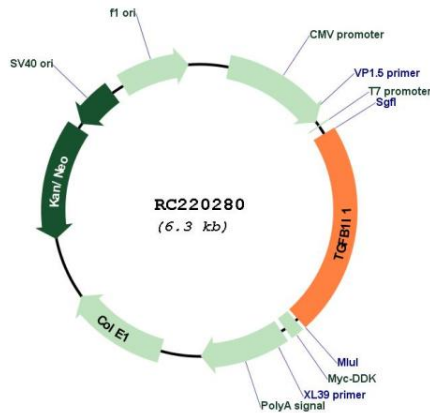
Cytogenetics: 16p11.2

Protein Families: Druggable Genome, Transcription Factors

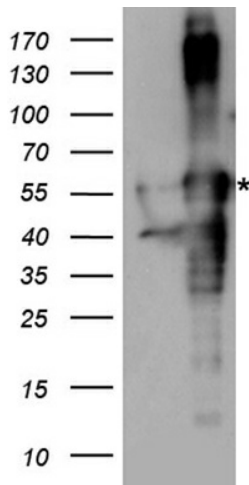
MW: 49.6 kDa

Gene Summary: This gene encodes a coactivator of the androgen receptor, a transcription factor which is activated by androgen and has a key role in male sexual differentiation. The encoded protein is thought to regulate androgen receptor activity and may have a role to play in the treatment of prostate cancer. Multiple transcript variants encoding different isoforms have been found for this gene. [provided by RefSeq, Sep 2009]

Product images:



Circular map for RC220280



HEK293T cells were transfected with the pCMV6-ENTRY control (Cat# [PS100001], Left lane) or pCMV6-ENTRY TGFB11 (Cat# RC220280, Right lane) cDNA for 48 hrs and lysed. Equivalent amounts of cell lysates (5 ug per lane) were separated by SDS-PAGE and immunoblotted with anti-TGFB11 antibody (Cat# [TA890151]). Positive lysates [LY402475] (100ug) and [LC402475] (20ug) can be purchased separately from OriGene.