

Product datasheet for RC220277L1

TNR (NM_003285) Human Tagged Lenti ORF Clone

Product data:

Product Type:	Expression Plasmids
Product Name:	TNR (NM_003285) Human Tagged Lenti ORF Clone
Tag:	Myc-DDK
Symbol:	TNR
Synonyms:	TN-R
Mammalian Cell Selection:	None
Vector:	pLenti-C-Myc-DDK (PS100064)
E. coli Selection:	Chloramphenicol (34 ug/mL)
ORF Nucleotide Sequence:	The ORF insert of this clone is exactly the same as(RC220277).
Restriction Sites:	SgfI-MluI
Cloning Scheme:	

Cloning sites used for ORF Shuttling:



* The last codon before the Stop codon of the ORF.

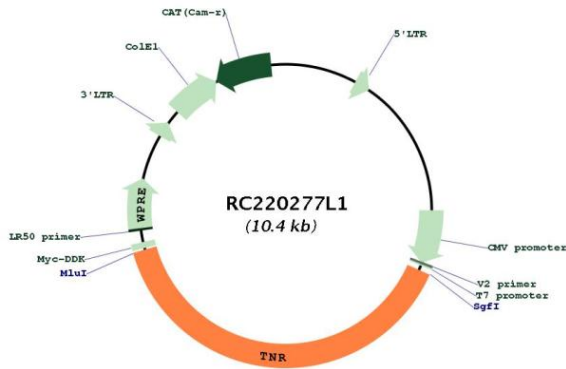
ACCN:	NM_003285
ORF Size:	4074 bp



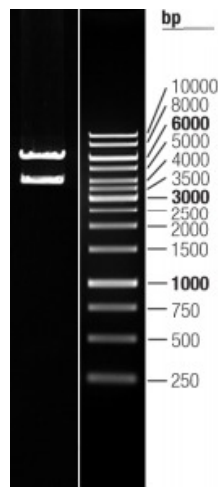
[View online »](#)

OTI Disclaimer:	The molecular sequence of this clone aligns with the gene accession number as a point of reference only. However, individual transcript sequences of the same gene can differ through naturally occurring variations (e.g. polymorphisms), each with its own valid existence. This clone is substantially in agreement with the reference, but a complete review of all prevailing variants is recommended prior to use. More info
OTI Annotation:	This clone was engineered to express the complete ORF with an expression tag. Expression varies depending on the nature of the gene.
Components:	The ORF clone is ion-exchange column purified and shipped in a 2D barcoded Matrix tube containing 10ug of transfection-ready, dried plasmid DNA (reconstitute with 100 ul of water).
Reconstitution Method:	<ol style="list-style-type: none">1. Centrifuge at 5,000xg for 5min.2. Carefully open the tube and add 100ul of sterile water to dissolve the DNA.3. Close the tube and incubate for 10 minutes at room temperature.4. Briefly vortex the tube and then do a quick spin (less than 5000xg) to concentrate the liquid at the bottom.5. Store the suspended plasmid at -20°C. The DNA is stable for at least one year from date of shipping when stored at -20°C.
RefSeq:	NM_003285.1 , NP_003276.2
RefSeq Size:	4716 bp
RefSeq ORF:	4077 bp
Locus ID:	7143
UniProt ID:	Q92752
Cytogenetics:	1q25.1
Protein Families:	Druggable Genome
Protein Pathways:	ECM-receptor interaction, Focal adhesion
MW:	149.4 kDa
Gene Summary:	This gene encodes a member of the tenascin family of extracellular matrix glycoproteins. The encoded protein is restricted to the central nervous system. The protein may play a role in neurite outgrowth, neural cell adhesion and modulation of sodium channel function. It is a constituent of perineuronal nets. [provided by RefSeq, Aug 2013]

Product images:



Circular map for RC220277L1



Double digestion of RC220277L1 using SgfI and MluI