

Product datasheet for **RC220264**

ZNF673 (KRBOX4) (NM_017776) Human Tagged ORF Clone

Product data:

Product Type: Expression Plasmids
Product Name: ZNF673 (KRBOX4) (NM_017776) Human Tagged ORF Clone
Tag: Myc-DDK
Symbol: ZNF673
Synonyms: ZNF673
Mammalian Cell Selection: Neomycin
Vector: pCMV6-Entry (PS100001)
E. coli Selection: Kanamycin (25 ug/mL)
ORF Nucleotide Sequence: >RC220264 representing NM_017776
Red=Cloning site Blue=ORF Green=Tags(s)

TTTTGTAATACGACTCACTATAGGGCGCCGGGAATTCGTCGACTGGATCCGGTACCGAGGAGATCTGCC
GCC**CGATCGCC**

ATGGCCATGTCCCAGGAATCATTGACCTCAAGGACGTGTTTGTGGACTTCACCCTGGAGGAGTGGCAGC
AACTGGACTCTGCCAGAAGAACCTCTACAGGGATGTCATGCTTGAGAACTACAGCCACCTGGTGTCCGT
GGGGTATCTAGTTGCGAAGCCAGATGTGATCTTCAGGTTGGGACCAGGTGAAGAGTCTGGATGGCAGAT
GGGGGGACCCCGGTACGGACCTGTGCAAGTCTGGCAAGTTGATGAGCAGATAGATCACTACAAGGAAA
GCCAAGACAACTTCCTTGGCAAGCTGCATTATAGGCAAGGAAACACTGAAGGATGAAAGCGGTCAAGA
ATCCAGAACATGTAGAAAAGCATTATCTGAGCACAGAATTTGATTCTGTAAGGCAAAGACTCCCTAAA
TATTATTCGTGGGAAAAGGCATTCAAAACATCATTTAACTTTCTTGGTCAAATGGAAGCTATGTAAGA
AAGAAAAGA

ACGCGTACGCGGCCGCTCGAGCAGAACTCATCTCAGAAGAGGATCTGGCAGCAAATGATATCCTGGATT
ACAAGGATGACGACGATAAGGTTTAA

Protein Sequence: >RC220264 representing NM_017776
Red=Cloning site Green=Tags(s)

MAMQESLTFKDFVDFVDFLEEWQQLDSAQKNLYRDMLENYSHLVSVGYLVAKPDVIFRLGPGEESWMD
GGTPVVRTCAEVWQVDEQIDHYKESQDKLPWQAAF IGKETLKDESGQESRTCRKSIYLSTEFDSVRQLPK
YYSWEKAFKTSFKLSWSKWKLCCKER

TRTRPLEQKLISEEDLAANDILDYKDDDDKV

Chromatograms: https://cdn.origene.com/chromatograms/mk6498_a12.zip



[View online »](#)

Restriction Sites: SgfI-MluI

Cloning Scheme:



ACCN: NM_017776

ORF Size: 498 bp

OTI Disclaimer: The molecular sequence of this clone aligns with the gene accession number as a point of reference only. However, individual transcript sequences of the same gene can differ through naturally occurring variations (e.g. polymorphisms), each with its own valid existence. This clone is substantially in agreement with the reference, but a complete review of all prevailing variants is recommended prior to use. [More info](#)

OTI Annotation: This clone was engineered to express the complete ORF with an expression tag. Expression varies depending on the nature of the gene.

Components: The ORF clone is ion-exchange column purified and shipped in a 2D barcoded Matrix tube containing 10ug of transfection-ready, dried plasmid DNA (reconstitute with 100 ul of water).

Reconstitution Method:

1. Centrifuge at 5,000xg for 5min.
2. Carefully open the tube and add 100ul of sterile water to dissolve the DNA.
3. Close the tube and incubate for 10 minutes at room temperature.
4. Briefly vortex the tube and then do a quick spin (less than 5000xg) to concentrate the liquid at the bottom.
5. Store the suspended plasmid at -20°C. The DNA is stable for at least one year from date of shipping when stored at -20°C.

RefSeq: [NM_017776.2](#)

RefSeq Size: 2308 bp

RefSeq ORF: 501 bp

Locus ID: 55634

UniProt ID: [Q5J UW0](#)

Cytogenetics: Xp11.3

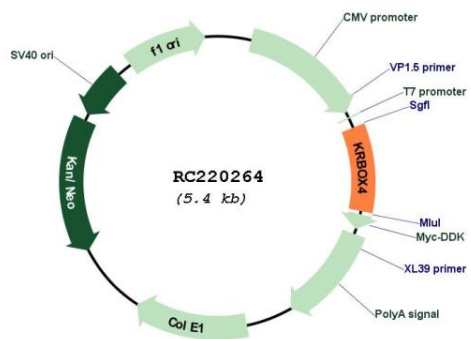
Domains: KRAB

Protein Families: Transcription Factors

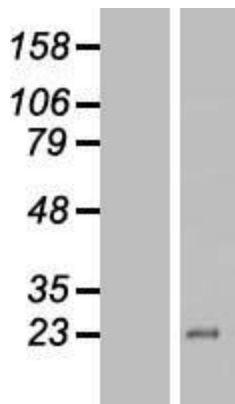
MW: 19.4 kDa

Gene Summary: This encodes a zinc finger protein with an N-terminal KRAB (Kruppel-associated) domain found in transcriptional repressors. This gene is located in a region of the X chromosome thought to be involved in nonsyndromic X-linked cognitive disability. Multiple transcript variants encoding different isoforms have been found for this gene. [provided by RefSeq, Aug 2011]

Product images:



Circular map for RC220264



Western blot validation of overexpression lysate (Cat# [LY413549]) using anti-DDK antibody (Cat# [TA50011-100]). Left: Cell lysates from untransfected HEK293T cells; Right: Cell lysates from HEK293T cells transfected with RC220264 using transfection reagent MegaTran 2.0 (Cat# [TT210002]).