

## Product datasheet for **RC220263**

### **KBTBD11 (NM\_014867) Human Tagged ORF Clone**

#### **Product data:**

Product Type:	Expression Plasmids
Product Name:	KBTBD11 (NM_014867) Human Tagged ORF Clone
Tag:	Myc-DDK
Symbol:	KBTBD11
Synonyms:	KLHDC7C
Mammalian Cell Selection:	Neomycin
Vector:	pCMV6-Entry (PS100001)
E. coli Selection:	Kanamycin (25 ug/mL)



[View online »](#)

**ORF Nucleotide Sequence:**

>RC220263 representing NM\_014867  
 Red=Cloning site Blue=ORF Green=Tags(s)

TTTTGTAATACGACTCACTATAGGGCGGCCGGAATTCGTCGACTGGATCCGGTACCGAGGAGATCTGCC  
 GCC**CGATCGCC**

ATGGAGCACGCGGTGCCCCCTGCGTCTCTACCCAGGGACTGAGCCCGGGCTGCCGGGAGAGCGAGA  
 GCGAGGGCGCCGGTCCCGGCGCAGACACCCTGCAGTCTCGGCGGTCCCTGTGCTTACGCTCCGGGA  
 AGAGTCCCGCCGAGTCCCTCGCTCAGCGCGGAAGGCGGGCCACCTCCCGCCCTCCAGCGGTGGC  
 CCGCGGGTGGTGGAGCGCAGTGGGAGGCGGAGCGCGGGCGCCGCTCCCGGAGGAGCTCGCTCCC  
 CTGAGGAGCGCGTCCCGGAAGAGCCCGGCGCCGCTCCCGAACCAGCGCTTTGGCTTGGAGACC  
 CGCTCCCGGAGGAGCCGGGAGCCCGCCGCTACCCCGGGGTTCGGGGCGGTGTACGGGAGCCG  
 GACCTGGTGTGGAGGTGTGGGGCGCCGGTGCAGCGCACAAAGCGGTGCTGGCGGCGCAGCGACT  
 ACTTCCGCGCGCGCTCGCGGACGTGCTGCGGTGCAGGAGTGAGCCTGACGGCGTCCGGCTGCT  
 CCTCGCCGACGCTACAGCGGGCGATGGCGGGCTGCGGCCGACAACGTGGCCGAGGTGGTGGCCGGC  
 GCGCGCCGCTGACGCTGCCCGGCGCGCAGCGGCCACCCAGCGCTGGGGCCGAGCTGAGCCTGG  
 CCAACTGTACGAGGTCCTGAGCGCGCAAGCGGAGCGGTGAACGAGCTGCGCGACGCCGCTACTG  
 CTTATGAGCGACCACTATCTGGAGGTGCTGCGGAGCCCGCCGTTTCGGCCGCTGTCCGGCGCAGAG  
 CGGGACCTGTGCTGCGCCGCGCTGCGCGCCGGCCGCGCCACCTTTGGCCGCGCGCTCGGGCCGG  
 CGGGGAGCGCGGGCAGCCGGCTCAGAGCCCTCGGGGACGCGGACGCGCGGGGACGCGGCCGT  
 CTACTGCTTCCACGCGCGCGGAGAGTGGCGGAGCTGACGCGGTGCCGAGGGCGCGCGCGCGG  
 GGCTGCGGCTGTGCTCCTCTACAACCTCTTCTGCTACAACCCGGCCACGGACAGCTGGAGCGCGT  
 CCGCGCGCCGCTCGCAGCTGCGGCTGCTGGCCCTGGACGGTACCTCTACGCGTGGGCGCGAG  
 TGCTGCTCAGCGTGGAGCGCTACGACCCGCGCGGACCGCTGGGCCCGTGGCGCGCTGCCCGGG  
 GCGCTTCCGCGTGGCGATGAGGCCACCACCTGCCACGGCGAGATCTACGTGTCCGGGGCTCCCTCT  
 CTATCGCTGCTCAAGTATGACCCGCGCGCAGAGTGGCAGGAGTCCCGTGCAGCAGCAGCCGCGAG  
 CGCTCGGCCGACATGGTGGCTCTCGACGGTTCATCTACCGCTTCGATCTGAGCGGACGCCGCGGAGG  
 CGCAGGCGCGGGGCGAGCGGGTCCAGCTGTCCGATACCACTGCCTGGCCAAGCAGTGGAGCCCGT  
 CGTCCGCCCTGCGCTCCCGCGGGCCACGGGCTGCAGCCCTCCGCTGCGCCGCTGGACGGC  
 GCCATCTACTGCTGAGCCGCGGGCACCTGGCGCTTCCAGCCTGCCCGGAAGCGAGCCGGCGGGC  
 ACGCAGGCCAGGCGCGGCTTCGAGGCGCTGGGCGCCCTTGACGCTCCGGGGTGTGCTCATCCGTT  
 CGCTCTAGCCTGCTGAGAAGCCGCCCGAGGGGAGCAGGGCGCCCCG

**ACGCGT**ACGCGGCCGCTCGAGCAGAACTCATCTCAGAAGAGGATCTGGCAGCAATGATATCCTGGATT  
 ACAAGGATGACGACGATAAGGTTAA

**Protein Sequence:**

>RC220263 representing NM\_014867  
 Red=Cloning site Green=Tags(s)

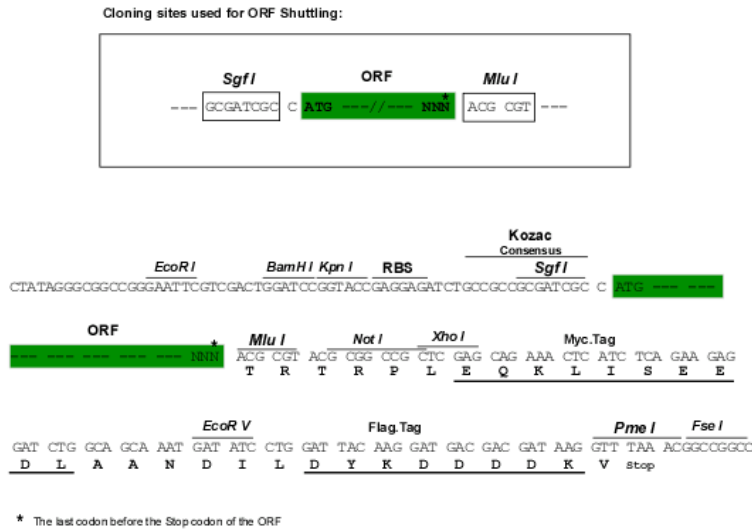
MEHAVAPCVLYPGTEPGAAGESESEGAASPAQTPCSLGASLFCSSGEESPPQSLASAAEGAATSPSSGG  
 PRVVERQWEAGSAGAASPEELASPEERACPEEPAAPSPEPRVWLEDPASPEEPGEPAPVPPGFGAVYGEP  
 DLVLEVSGRRLRAHKAVLAARSDYFRARASRDVLRVQVSLTALRLLADAYSGRMAGVRPDNVAEYVAG  
 ARRLQLPGAAQRATDAVGPOQLSLANCYEVL SAAKRQRLNELRDAAYCFMSDHYLEVLREPAVFGRLSGAE  
 RDLLLRRLRAGRAHLLAAALGPAGERAGSRPQSPSGDADARGDAAVYCFHAAAGEWREL TRLPEGAPAR  
 GGLCVLYNYL FVAGGVAPAGPDGRARPSDQVFCYNPATDSWSAVRPLRQARSQRLLLALDGHLYAVGGE  
 CLLSVERYDPRADRWAPVAPLPRGAFVAHEATTCHGEIYVSGGSLFYRLLKYDPRRDEWQECPCSSRE  
 RSADMVALDGF IYRFDLSGSRGEAQAAGPSGVSVSRHCLAKQWSPCVAPLRLPGGPTGLQPFRCAALDG  
 AIYCVSRAGTWRFQAREGEAGGDAGQGGGFEALGAPLDVRGVL IPFALSLEPKPPRGEQAGAP

**TR**TRPLEQKLI SEEDLAANDILDYKDDDDKV

Chromatograms: [https://cdn.origene.com/chromatograms/mk8019\\_g09.zip](https://cdn.origene.com/chromatograms/mk8019_g09.zip)

Restriction Sites: SgfI-MluI

Cloning Scheme:



ACCN: NM\_014867

ORF Size: 1869 bp

OTI Disclaimer: Due to the inherent nature of this plasmid, standard methods to replicate additional amounts of DNA in E. coli are highly likely to result in mutations and/or rearrangements. Therefore, OriGene does not guarantee the capability to replicate this plasmid DNA. Additional amounts of DNA can be purchased from OriGene with batch-specific, full-sequence verification at a reduced cost. Please contact our customer care team at [custsupport@origene.com](mailto:custsupport@origene.com) or by calling 301.340.3188 option 3 for pricing and delivery.

The molecular sequence of this clone aligns with the gene accession number as a point of reference only. However, individual transcript sequences of the same gene can differ through naturally occurring variations (e.g. polymorphisms), each with its own valid existence. This clone is substantially in agreement with the reference, but a complete review of all prevailing variants is recommended prior to use. [More info](#)

OTI Annotation: This clone was engineered to express the complete ORF with an expression tag. Expression varies depending on the nature of the gene.

Components: The ORF clone is ion-exchange column purified and shipped in a 2D barcoded Matrix tube containing 10ug of transfection-ready, dried plasmid DNA (reconstitute with 100 ul of water).

- Reconstitution Method:**
1. Centrifuge at 5,000xg for 5min.
  2. Carefully open the tube and add 100ul of sterile water to dissolve the DNA.
  3. Close the tube and incubate for 10 minutes at room temperature.
  4. Briefly vortex the tube and then do a quick spin (less than 5000xg) to concentrate the liquid at the bottom.
  5. Store the suspended plasmid at -20°C. The DNA is stable for at least one year from date of shipping when stored at -20°C.

**RefSeq:** [NM\\_014867.3](#)

**RefSeq Size:** 6706 bp

**RefSeq ORF:** 1872 bp

**Locus ID:** 9920

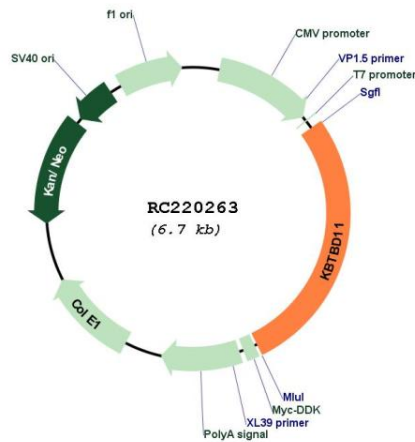
**UniProt ID:** [O94819](#)

**Cytogenetics:** 8p23.3

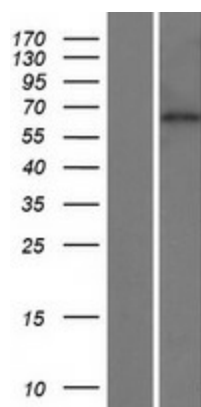
**Domains:** BTB, Kelch

**MW:** 65.5 kDa

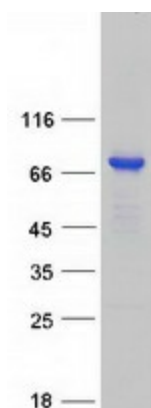
**Product images:**



Circular map for RC220263



Western blot validation of overexpression lysate (Cat# [LY414975]) using anti-DDK antibody (Cat# [TA50011-100]). Left: Cell lysates from untransfected HEK293T cells; Right: Cell lysates from HEK293T cells transfected with RC220263 using transfection reagent MegaTran 2.0 (Cat# [TT210002]).



Coomassie blue staining of purified KBTBD11 protein (Cat# [TP320263]). The protein was produced from HEK293T cells transfected with KBTBD11 cDNA clone (Cat# RC220263) using MegaTran 2.0 (Cat# [TT210002]).