

## Product datasheet for RC220262

### OR7D4 (NM\_001005191) Human Tagged ORF Clone

#### Product data:

Product Type:	Expression Plasmids
Product Name:	OR7D4 (NM_001005191) Human Tagged ORF Clone
Tag:	Myc-DDK
Symbol:	OR7D4
Synonyms:	hg105; OR7D4P; OR19-7; OR19-B; OR19B
Mammalian Cell Selection:	Neomycin
Vector:	pCMV6-Entry (PS100001)
E. coli Selection:	Kanamycin (25 ug/mL)
ORF Nucleotide Sequence:	>RC220262 representing NM_001005191 Red=Cloning site Blue=ORF Green=Tags(s)

TTTTGTAATACGACTCACTATAGGGCGCCGGGAATTCGTCGACTGGATCCGGTACCGAGGAGATCTGCC  
GCC**CGATCGCC**

ATGGAAGCAGAAAACCTTACAGAATTATCAAAATTTCTCCTCCTGGGACTCTCAGATGATCCTGAACTGC  
AGCCCGTCTCTTTGGGCTGTTCTGTCCATGTACCTGGTCACGGTGCTGGGAACTGCTCATCATTCT  
GGCCGTCAGCTCTGACTCCACCTCCACACCCCATGACTTCTCCTCTCCACCTGCTCTTTGTTGAC  
ATCTGTTTCATCTCCACCACAGTCCCAAGATGCTAGTGAGCATCCAGGCACGGAGCAAAGACATCTCCT  
ACATGGGGTGCCTCACTCAGGTGATTTTTTAATGATGTTTGCTGGAATGGATACTTTCTACTGGCCGT  
GATGGCCTATGACCGTTTGTGGCCATCTGCCACCCACTGCACTACACGGTCATCATGAACCCCTGCCTC  
TGTGGCCTCCTGGTTCTGGCATCTTGGTTCATATTTCTGGTTCCTCCTGGTTCATATTCTACTGATGA  
AGAGGTTGACCTTCTCCACAGGCACTGAGATCCGCATTTCTTCTGTGAACCGGCTCAGGTCTCAAGGT  
GGCCTGCTTAACACCCTCCTCAATAACATTGTCTTGTATGTGGCCACGGCACTGCTGGGTGTGTTTCT  
GTAGCTGGGATCCTTCTCCTACTCTCAGATTGTCTCCTCCTAATGGGAATGCTCTCCACCAAGGGCA  
AGTACAAAGCCTTTTCCACCTGTGGATCTCACCTCTGTGTGGTCTCCTTGTCTATGGAACAGGACTTGG  
GGTCTATCTGAGTCTGCTGTGACCCATTCTCCAGAGCAGCTCCACCGCCTCAGTGATGTACGCCATG  
GTCACCCCATGCTGAACCCCTCATCTACAGCCTGAGGAACAAGGATGTGAAGGGGGCCCTGAAAAGAC  
TCCTCAGCAGGGCCGACTCTTGTCCA

**ACGCGT**ACGCGGCCGCTCGAGCAGAAACTCATCTCAGAAGAGGATCTGGCAGCAAATGATATCCTGGATT  
ACAAGGATGACGACGATAAGGTTTAA



[View online »](#)

**Protein Sequence:** >RC220262 representing NM\_001005191  
Red=Cloning site Green=Tags(s)

```

MEAEENLTELKFLLLGLSDDPELQPVLFGFLFLSMYLVTVLGNLLIILAVSSDSSLHTPMYFFLSNLSFVD
ICFISTTVPKMLVSIQARSKDISYMGCLTQVYFLMMFAGMDTFLAVMAYDRFVAICHPLHYTVIMNPCL
CGLLVLASWFIIFWFLVHILLMKRLTFSTGTEIPHFCEPAQVLKVACSNLLNNIVLYVATALLGVFP
VAGILFSYSQIVSSLMGMSSTKGKYKAFSTCGSHLCVVSLFYGTGLGVYLSAVTHSSQSSSTASVMYAM
VTPMLNPFYISLRNKDVKGALERLLSRADSCP
    
```

TRTRPLEQKLISEEDLAANDILDYKDDDDKV

**Chromatograms:** [https://cdn.origene.com/chromatograms/mk8003\\_c06.zip](https://cdn.origene.com/chromatograms/mk8003_c06.zip)

**Restriction Sites:** SgfI-MluI

**Cloning Scheme:**



**ACCN:** NM\_001005191

**ORF Size:** 936 bp

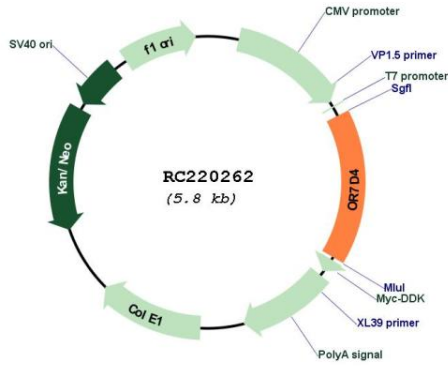
**OTI Disclaimer:** The molecular sequence of this clone aligns with the gene accession number as a point of reference only. However, individual transcript sequences of the same gene can differ through naturally occurring variations (e.g. polymorphisms), each with its own valid existence. This clone is substantially in agreement with the reference, but a complete review of all prevailing variants is recommended prior to use. [More info](#)

**OTI Annotation:** This clone was engineered to express the complete ORF with an expression tag. Expression varies depending on the nature of the gene.

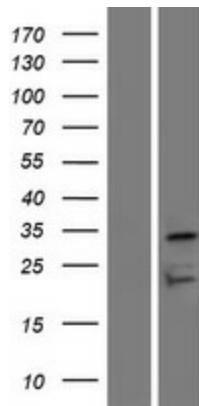
**Components:** The ORF clone is ion-exchange column purified and shipped in a 2D barcoded Matrix tube containing 10ug of transfection-ready, dried plasmid DNA (reconstitute with 100 ul of water).

<b>Reconstitution Method:</b>	<ol style="list-style-type: none"><li>1. Centrifuge at 5,000xg for 5min.</li><li>2. Carefully open the tube and add 100ul of sterile water to dissolve the DNA.</li><li>3. Close the tube and incubate for 10 minutes at room temperature.</li><li>4. Briefly vortex the tube and then do a quick spin (less than 5000xg) to concentrate the liquid at the bottom.</li><li>5. Store the suspended plasmid at -20°C. The DNA is stable for at least one year from date of shipping when stored at -20°C.</li></ol>
<b>RefSeq:</b>	<a href="#">NM_001005191.2</a> , <a href="#">NP_001005191.1</a>
<b>RefSeq Size:</b>	939 bp
<b>RefSeq ORF:</b>	939 bp
<b>Locus ID:</b>	125958
<b>UniProt ID:</b>	<a href="#">Q8NG98</a>
<b>Cytogenetics:</b>	19p13.2
<b>Protein Families:</b>	Druggable Genome, Transmembrane
<b>Protein Pathways:</b>	Olfactory transduction
<b>MW:</b>	34.3 kDa
<b>Gene Summary:</b>	Olfactory receptors interact with odorant molecules in the nose, to initiate a neuronal response that triggers the perception of a smell. The olfactory receptor proteins are members of a large family of G-protein-coupled receptors (GPCR) arising from single coding-exon genes. Olfactory receptors share a 7-transmembrane domain structure with many neurotransmitter and hormone receptors and are responsible for the recognition and G protein-mediated transduction of odorant signals. The olfactory receptor gene family is the largest in the genome. The nomenclature assigned to the olfactory receptor genes and proteins for this organism is independent of other organisms. [provided by RefSeq, Jul 2008]

Product images:



Circular map for RC220262



Western blot validation of overexpression lysate (Cat# [LY423977]) using anti-DDK antibody (Cat# [TA50011-100]). Left: Cell lysates from untransfected HEK293T cells; Right: Cell lysates from HEK293T cells transfected with RC220262 using transfection reagent MegaTran 2.0 (Cat# [TT210002]).