

Product datasheet for RC220258

MYCT1 (NM_025107) Human Tagged ORF Clone

Product data:

Product Type:	Expression Plasmids
Product Name:	MYCT1 (NM_025107) Human Tagged ORF Clone
Tag:	Myc-DDK
Symbol:	MYCT1
Synonyms:	MTLC
Mammalian Cell Selection:	Neomycin
Vector:	pCMV6-Entry (PS100001)
E. coli Selection:	Kanamycin (25 ug/mL)
ORF Nucleotide Sequence:	>RC220258 representing NM_025107 Red=Cloning site Blue=ORF Green=Tags(s)

TTTGTAAATACGACTCACTATAGGGCGGCCGGAATTCGTCGACTGGATCCGGTACCGAGGAGATCTGCC
GCC**CGATCGC**

ATGCGAACACAAGTATATGAGGGTTGTGTAAAAATTATTTTCTCTTGCTGTACTACAAAGAGATAGAA
TCAAAGTCTTTTTTCGACATACTGGTTTTCTTTCTGTTTTCTTCTTTCTTCTATTTCTTGTTGA
TATTATGGCTAATAACACAACAAGTTTAGGGAGTCCATGGCCAGAAAACCTTTGGGAGGACCTTATCATG
TCCTTCACTGTATCCATGGCAATCGGGCTGGTACTTGGAGGATTTATTTGGGCTGTGTTCAATTTGTCTGT
CTCGAAGAAGAAGAGCCAGTGTCCCATCTCACAGTGGAGTTCAAGCAGGAGATCTAGGTCTTCTTACAC
CCACGGCCTCAACAGAACTGGATTTTACCGCCACAGTGGCTGTGAACGTCGAAGCAACCTCAGCCTGGCC
AGTCTCACCTTCCAGCGACAAGCTTCCCTGGAACAAGCAAATTCCTTTCCAAGAAAATCAAGTTTCAGAG
CTTCTACTTTCCATCCCTTTCTGCAATGTCCACCACTTCTGTGGAACTGAGAGTCAGCTGGTGACTCT
CCCTTCTTCCAATATCTCTCCACCATCAGCACTTCCACAGTCTGAGCCGTCCTGACTACTGGTCCAGT
AACAGTCTTCGAGTGGGCCTTTCAACACCGCCCCACCTGCCTATGAGTCCATCATCAAGGCATTTCCAG
ATTCC

ACGCGTACGCGGCCGCTCGAGCAGAACTCATCTCAGAAGAGGATCTGGCAGCAAATGATATCTGGATT
ACAAGGATGACGACGATAAGGTTTAA


[View online »](#)

Protein Sequence: >RC220258 representing NM_025107
 Red=Cloning site Green=Tags(s)

MRTQVYEGLCKNYFSLAVLQRDRIKLLFFDILVFLSVFLLFLLFLVDIMANNTTSLGSPWPENFWEDLIM
 SFTVSMAGLVLGGFIWAVFICLSRRRRASAPISQWSSRRSRSSYTHGLNRTGFYRHSGCERRSNLSLA
 SLTFQRQASLEQANSFPRKSSFRASFTFHPFLQCPPLPVETESQLVTLPSNISPTISTSHSLSRPDYWSS
 NSLRVGLSTPPPPAYESIKAFPDS

TRTRPLEQKLISEEDLAANDILDYKDDDDKV

Chromatograms: https://cdn.origene.com/chromatograms/ja1520_h06.zip

Restriction Sites: SgfI-MluI

Cloning Scheme:



ACCN: NM_025107

ORF Size: 705 bp

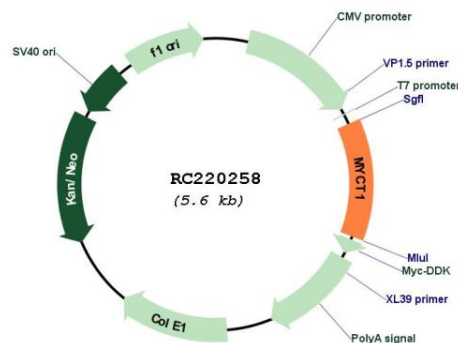
OTI Disclaimer: The molecular sequence of this clone aligns with the gene accession number as a point of reference only. However, individual transcript sequences of the same gene can differ through naturally occurring variations (e.g. polymorphisms), each with its own valid existence. This clone is substantially in agreement with the reference, but a complete review of all prevailing variants is recommended prior to use. [More info](#)

OTI Annotation: This clone was engineered to express the complete ORF with an expression tag. Expression varies depending on the nature of the gene.

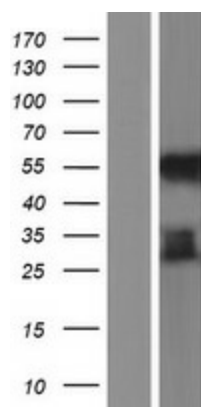
Components: The ORF clone is ion-exchange column purified and shipped in a 2D barcoded Matrix tube containing 10ug of transfection-ready, dried plasmid DNA (reconstitute with 100 ul of water).

Reconstitution Method:	<ol style="list-style-type: none"> 1. Centrifuge at 5,000xg for 5min. 2. Carefully open the tube and add 100ul of sterile water to dissolve the DNA. 3. Close the tube and incubate for 10 minutes at room temperature. 4. Briefly vortex the tube and then do a quick spin (less than 5000xg) to concentrate the liquid at the bottom. 5. Store the suspended plasmid at -20°C. The DNA is stable for at least one year from date of shipping when stored at -20°C.
Note:	Plasmids are not sterile. For experiments where strict sterility is required, filtration with 0.22um filter is required.
RefSeq:	<u>NM_025107.2, NP_079383.2</u>
RefSeq Size:	1095 bp
RefSeq ORF:	708 bp
Locus ID:	80177
UniProt ID:	<u>Q8N699</u>
Cytogenetics:	6q25.2
Protein Families:	Transmembrane
MW:	26.4 kDa
Gene Summary:	May regulate certain MYC target genes, MYC seems to be a direct upstream transcriptional activator. Does not seem to significantly affect growth cell capacity. Overexpression seems to mediate many of the known phenotypic features associated with MYC, including promotion of apoptosis, alteration of morphology, enhancement of anchorage-independent growth, tumorigenic conversion, promotion of genomic instability, and inhibition of hematopoietic differentiation (By similarity).[UniProtKB/Swiss-Prot Function]

Product images:



Circular map for RC220258



Western blot validation of overexpression lysate (Cat# [LY403048]) using anti-DDK antibody (Cat# [TA50011-100]). Left: Cell lysates from untransfected HEK293T cells; Right: Cell lysates from HEK293T cells transfected with RC220258 using transfection reagent MegaTran 2.0 (Cat# [TT210002]).