

Product datasheet for **RC220252**

ITIH3 (NM_002217) Human Tagged ORF Clone

Product data:

Product Type:	Expression Plasmids
Product Name:	ITIH3 (NM_002217) Human Tagged ORF Clone
Tag:	Myc-DDK
Symbol:	ITIH3
Synonyms:	H3P; ITI-HC3; SHAP
Mammalian Cell Selection:	Neomycin
Vector:	pCMV6-Entry (PS100001)
E. coli Selection:	Kanamycin (25 ug/mL)



[View online »](#)

ORF Nucleotide
Sequence:

>RC220252 ORF sequence
Red=Cloning site Blue=ORF Green=Tags(s)

TTTTGTAATACGACTCACTATAGGGCGGCCGGAATTCGTCGACTGGATCCGGTACCGAGGAGATCTGCC
GCC**CGATCGCC**

ATGGCATTTCATGGTGGCCCTGTCTCATCTTGGCTCTGCTCTCCAGCTTGGCAGCCTCTGGCTTCCCGA
GAAGCCCTTTTCGCTGCTTGGGAAACGGAGCCTCCCGAAGGGTGGCCAATGGCATCGAGGTCTACAG
TACCAAAATCAACTCCAAGGTGACCTCCCGTTTTGCTCACAATGTTGTCACCATGAGAGCCGTCAACCGT
GCAGACACGGCCAAGGAGGTTTCTTTGATGTGGAGCTGCCAAGACGGCCTTCATACCAACTTACCT
TGACCATCGACGGTGTACCTACCTGGGAATGTCAAGGAGAAGGAAGTTGCCAAGAAGCAGTATGAAAA
GGCTGTGTCCAGGGCAAGACGGCCGGCTTGGTCAAGGCTCTGGGAGGAAGTTGGAGAAGTTCACAGTC
TCGGTCAACGTGGCTGCAGGCAGCAAAGTACCTTCGAGCTAACCTACGAGGAGCTGCTGAAGAGGCACA
AGGGCAAGTACGAGATGTACCTCAAGTCCAGCCTAAGCAACTGGTCAAACACTTTGAGATCGAGGTAGA
CATCTTCGAGCCTCAGGGAAATCAGCATGCTGGATGCTGAGGCCTTTTCATACCAACGACCTCCTGGGA
AGCGCCCTCACCAAGTCCTTCTCAGGAAAAAGGGCCATGTGTCCTTCAAGCCCAGCTTAGACCAACAGC
GTTTCATGCCAACCTGTACAGACTCCCTCCTCAATGGAGATTTCACTATCACCTATGACGTGAACAGAGA
ATCTCCTGGCAACGTGCAGATAGTCAATGGCTACTTTCGTGCACTTCTTTGCACCTCAAGGCTTCCAGTG
GTGCTAAGAACGTGGCCTTTGTGATTGACATCAGCGCTCCATGGTGGTGGAAATTAGAGCAGACAA
AGGAGGCCCTTCTCAGAACTCTGGAAGATATGCAAGAGGAAGACTATCTGAATTTTCATCTGTTCACTGG
AGATGTGTCCACATGGAAGAGCACTTAGTCCAGGCCACGCCGAGAACCTCCAGGAGGCCAGGACGTTT
GTGAAGAGCATGGAGGATAAAGGAATGACCAACATCAATGACGGGCTGCTGAGGGGCATCAGTATGCTGA
ACAAGCCCGAGAGGACACAGAATCCAGAGAGGAGCAGCTCCATTGTCATCATGCTGATGGGGA
TGCCAATGTTGGTGAGAGCAGACCCGAAAAATCCAAGAGAATGTGCGGAATGCCATCGGGGCAAGTTC
CCCTTGATAACCTGGGCTTTGGCAACAATCTGAATTATAACTTCTGGAGAACATGGCCCTGGAGAACC
ATGGGTTTGGCCGGCATTATGAGGACTCTGATGCCGATTTGCAGTTGCAGGGCTTCTATGAGGAGGT
GGCCAACCCACTGCTGACGGGTGTGGAGATGGAGTACCCCGAGAACGCTATCCTGGACCTCACCCAGAAC
ACTTACCAGCACTTCTACGATGGCTCTGAGATCGTGGTGGCCGGGCGCTGGTGGACGAGGACATGAACA
GCTTTAAGGCAGATGTGAAGGGCCATGGGGCCACCAACGACCTGACCTTACAGAGGAGGTGGACATGAA
GGAGATGGAGAAGGCCCTGCAGGAGCGGACTACATCTTCGGGAATTACATTGAGCGCTCTGGGCTAC
CTACCATTTGAGCAGCTGCTGGAGAAGCGCAAGAAGCCCATGGCGAGGAGAAGGAGAACCTCACGGCCC
GGGCCCTGGACCTGTCCCTCAAGTATCACTTTGTGACTCCACTGACCTCAATGGTGGTGACCAAGCCTGA
GGACAACGAGGATGAGAGGGCCATTGCCGACAAGCCTGGGGAAGATGCAGAAGCCACACCCGTGAGCCCC
GCCATGTCTACCTGACCAGCTACCAGCCTCCTCAAAACCCCTACTACTATGTGGACGGGGATCCCCACT
TCATCATCCAAATTCGGGAGAAAGACGATGCCCTCTGCTTCAACATCGATGAAGCCCCAGGCACAGTGTCT
GCGCCTTATTGAGGATGCAGTACAGGCCTCACAGTAAATGGGCAGATCACTGGCGACAAGAGAGGCAGC
CCTGACTCCAAGACCAGAAAGACTTACTTTGAAAACTGGGCATCGCAATGCTCAGATGGACTTCCAGG
TGGAGGTGACAACGGAGAAGATCACCTGTGGAACAGGGCCGTGCCGAGCACTTTGAGCTGGCTGGACAC
AGTCACAGTCACGCAGGATGGGCTGTCCATGATGATCAACAGGAAGAACATGGTGGTCTCCTTTGGAGAT
GGGGTTACCTTCGTGGTCTCTACACCAGGTGTGGAAGAAACATCCTGTCCACCGTGACTTTCTAGGCT
TCTACGTGGTGGACAGTACCGGATGTCAGCACAGACGATGGGCTGCTGGGGCAATTTTCCAACCCCTT
TGACTTTAAAGTGTCTGACATCCGGCCAGGCTCTGACCCACAAAGCCAGATGCCACATTGGTGGTGAAG
AACCATCAGCTGATTGTCAACAGGGCTCCAGAAAGACTACAGAAAGGATGCCAGCATCGGCACGAAGG
TTGTCTGCTGGTTCGTCACAACAACGGAGAAGGGCTGATTGATGGTGTCCACACTGACTACATTGTCCC
CAACCTGTTT

ACGCGTACGCGGCCGCTCGAGCAGAACTCATCTCAGAAGAGGATCTGGCAGCAATGATATCCTGGATT
ACAAGGATGACGACGATAAGGTTTAA

Protein Sequence: >RC220252 protein sequence
Red=Cloning site Green=Tags(s)

MAFAWWPCLILALLSSLAASGFPRSPFRLLGKRSLPEGVANGIEVYSTKINSKVTSRFAHNVVTRAVNR
 ADTAKEVSDVELPKTAFITNFTLTIDGVTPGNVKEKEVAKKQYEKAVSQGKTAGLVKASGRKLEKFTV
 SVNVAAGSKVTFELTYEELLKRHKGYEMYLKVPKQLVKHFEIEVDIFEPOGISMLDAEASFITNDLLG
 SALTKSFSGKKGHVSFKPSLDQQRSCPTCTDSLNGDFTITYDVRNRESPGNVQIVNGYFVHFFAPQGLPV
 VPKNVAFVIDISGSMAGRKLEQKEALLRILEDMQEEDYLNFIILFSGDVSTWKEHLVQATPENLQEARTF
 VKSMEDKGMTNINDGLLRGISMLNKAREEHRIPERSTSIIVIMLTDGDANVGESRPEKIQENVRNAIGGKF
 PLYNLGFGNNLNYNFLENMALENHGFARRIYEDSDADLQLQGFYEEVANPLLTVEMEYPENAILDLTQN
 TYQHFYDGEIVVAGRLVDEDMNSFKADVKGHGATNDLTFTEEVMKEMEKALQERDYIFGNYIERLWAY
 LTIEQLLEKRKNAHGEEKENLTARALDSLKYHFVTPLTSMVVTKPEDNERAIADKPGEDAEATPVSP
 AMSYLTSYQPQNPYYYVDGDPHFIIQIPEKDDALCFNIDEAPGTVLRLLIQDAVTGLTVNGQITGDKRGS
 PDSKTRKTYFGKLGIANAQMDFQVEVTTEKITLWNRVPSFWSLDTVTVTQDGLSMMINRKNMVSFSD
 GVTFFVVLHQVWKKHPVHRDFLGFVVDVSHRMSAQTHGLLGQFFQPFDFKVS DIRPGSDPTKPDATLVVK
 NHQLIVTRGSQKDYRKDASIGTKVVCWFVHNNGEGLIDGVHTDYIVPNLF

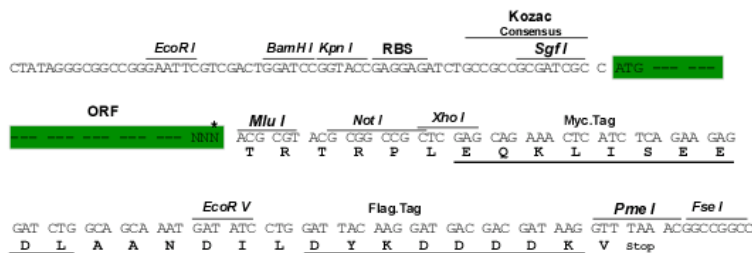
TRTRPLEQKLISEEDLAANDILDYKDDDDKV

Chromatograms: https://cdn.origene.com/chromatograms/mk6689_f11.zip

Restriction Sites: SgfI-MluI

Cloning Scheme:

Cloning sites used for ORF Shuttling:

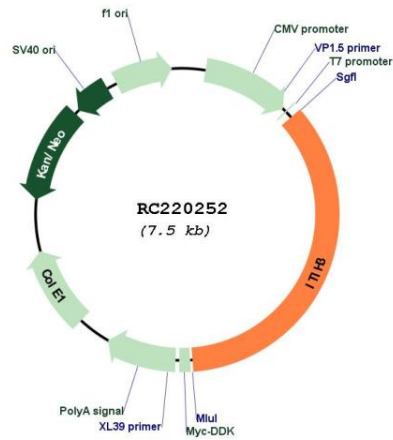


* The last codon before the Stop codon of the ORF

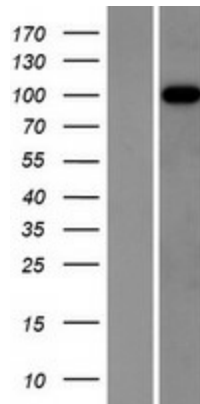
ACCN: NM_002217

ORF Size:	2670 bp
OTI Disclaimer:	The molecular sequence of this clone aligns with the gene accession number as a point of reference only. However, individual transcript sequences of the same gene can differ through naturally occurring variations (e.g. polymorphisms), each with its own valid existence. This clone is substantially in agreement with the reference, but a complete review of all prevailing variants is recommended prior to use. More info
OTI Annotation:	This clone was engineered to express the complete ORF with an expression tag. Expression varies depending on the nature of the gene.
Components:	The ORF clone is ion-exchange column purified and shipped in a 2D barcoded Matrix tube containing 10ug of transfection-ready, dried plasmid DNA (reconstitute with 100 ul of water).
Reconstitution Method:	<ol style="list-style-type: none">1. Centrifuge at 5,000xg for 5min.2. Carefully open the tube and add 100ul of sterile water to dissolve the DNA.3. Close the tube and incubate for 10 minutes at room temperature.4. Briefly vortex the tube and then do a quick spin (less than 5000xg) to concentrate the liquid at the bottom.5. Store the suspended plasmid at -20°C. The DNA is stable for at least one year from date of shipping when stored at -20°C.
RefSeq:	NM_002217.3 , NP_002208.3
RefSeq Size:	3037 bp
RefSeq ORF:	2673 bp
Locus ID:	3699
UniProt ID:	Q06033
Cytogenetics:	3p21.1
Domains:	VWA, VIT
MW:	99.8 kDa
Gene Summary:	This gene encodes the heavy chain subunit of the pre-alpha-trypsin inhibitor complex. This complex may stabilize the extracellular matrix through its ability to bind hyaluronic acid. Polymorphisms of this gene may be associated with increased risk for schizophrenia and major depressive disorder. This gene is present in an inter-alpha-trypsin inhibitor family gene cluster on chromosome 3. [provided by RefSeq, Jul 2015]

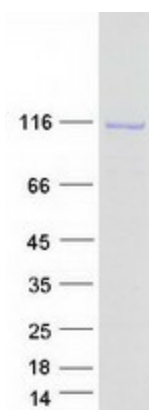
Product images:



Circular map for RC220252



Western blot validation of overexpression lysate (Cat# [LY419449]) using anti-DDK antibody (Cat# [TA50011-100]). Left: Cell lysates from untransfected HEK293T cells; Right: Cell lysates from HEK293T cells transfected with RC220252 using transfection reagent MegaTran 2.0 (Cat# [TT210002]).



Coomassie blue staining of purified ITIH3 protein (Cat# [TP320252]). The protein was produced from HEK293T cells transfected with ITIH3 cDNA clone (Cat# RC220252) using MegaTran 2.0 (Cat# [TT210002]).