

Product datasheet for RC220248

Dectin 1 (CLEC7A) (NM_197950) Human Tagged ORF Clone

Product data:

Product Type: Expression Plasmids
Product Name: Dectin 1 (CLEC7A) (NM_197950) Human Tagged ORF Clone
Tag: Myc-DDK
Symbol: Dectin 1
Synonyms: BGR; CANDF4; CD369; CLECSF12; DECTIN1; SCARE2
Mammalian Cell Selection: Neomycin
Vector: pCMV6-Entry (PS100001)
E. coli Selection: Kanamycin (25 ug/mL)
ORF Nucleotide Sequence: >RC220248 representing NM_197950
 Red=Cloning site Blue=ORF Green=Tags(s)

TTTTGTAATACGACTCACTATAGGGCGGCCGGAATTCGTCGACTGGATCCGGTACCGAGGAGATCTGCC
 GCC**CGGATCGCC**

ATGGAATATCATCCTGATTTAGAAAATTTGGATGAAGATGGATATACTCAATTACACTTCGACTCTCAA
 GCAATACCAGGATAGCTGTTGTTTCAGAGAAAGGGTCTTTCCAGCCCTTGCTCCTAATTGGATTAT
 ATATGAGAAGAGCTGTTATCTATTCAGCATGTCACTAAATTCCTGGGATGGAAGTAAAGACAATGCTGG
 CAACTGGGCTCTAATCTCTAAAGATAGACAGCTCAAATGAATTTGGATTTATAGTAAAACAAGTGTCTT
 CCCAACCTGATAATTCATTTTGGATAGGCCTTTCTCGGCCAGACTGAGGTACCATGGCTCTGGGAGGA
 TGGATCAACATTCTTTCTAACTTATTTTCAGATCAGAACCACAGCTACCCAAGAAAACCCATCTCCAAT
 TGTGTATGGATTCAGTGTCACTTTATGACCAACTGTGTAGTGTGCCCTCATATAGTATTTGTGAGA
 AGAAGTTTCAATG

ACGCGTACGCGGCCGCTCGAGCAGAACTCATCTCAGAAGAGGATCTGGCAGCAAATGATATCCTGGATT
 ACAAGGATGACGACGATAAGGTTTAA

Protein Sequence: >RC220248 representing NM_197950
 Red=Cloning site Green=Tags(s)
 MEYHPDLENLDEDGYQLHFDSQSNTRIAVVSEKGLVSSPCPPNWIIEYKSCYLFMSLNSWDGSKRQCW
 QLGSNLLKIDSSNELGFIVKQVSSQPDNSFWIGLSRPQTEVPWLWEDGSTFSSNLFQIRTTATQENPSPN
 CVWIHVSVIYDQLCSVPSYSICEKKFSM

TRTRPLEQKLISEEDLAANDILDYKDDDDKV

Chromatograms: https://cdn.origene.com/chromatograms/mg3108_g09.zip



[View online »](#)

Restriction Sites: SgfI-MluI

Cloning Scheme:



ACCN: NM_197950

ORF Size: 504 bp

OTI Disclaimer: The molecular sequence of this clone aligns with the gene accession number as a point of reference only. However, individual transcript sequences of the same gene can differ through naturally occurring variations (e.g. polymorphisms), each with its own valid existence. This clone is substantially in agreement with the reference, but a complete review of all prevailing variants is recommended prior to use. [More info](#)

OTI Annotation: This clone was engineered to express the complete ORF with an expression tag. Expression varies depending on the nature of the gene.

Components: The ORF clone is ion-exchange column purified and shipped in a 2D barcoded Matrix tube containing 10ug of transfection-ready, dried plasmid DNA (reconstitute with 100 ul of water).

Reconstitution Method:

1. Centrifuge at 5,000xg for 5min.
2. Carefully open the tube and add 100ul of sterile water to dissolve the DNA.
3. Close the tube and incubate for 10 minutes at room temperature.
4. Briefly vortex the tube and then do a quick spin (less than 5000xg) to concentrate the liquid at the bottom.
5. Store the suspended plasmid at -20°C. The DNA is stable for at least one year from date of shipping when stored at -20°C.

RefSeq: [NM_197950.3](#)

RefSeq Size: 2355 bp

RefSeq ORF: 507 bp

Locus ID: 64581

UniProt ID: [Q9BXN2](#)

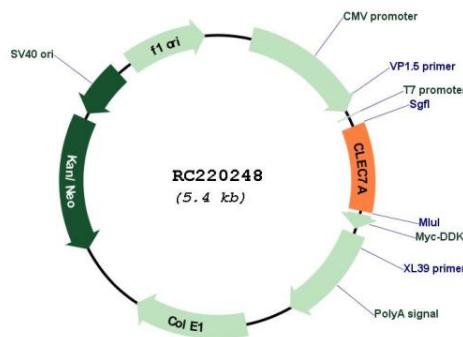
Cytogenetics: 12p13.2

Protein Families: Druggable Genome, Transmembrane

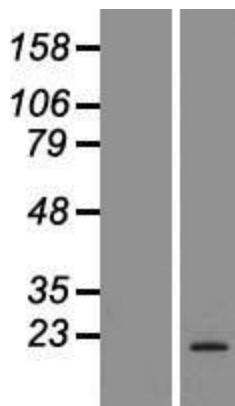
MW: 19 kDa

Gene Summary: This gene encodes a member of the C-type lectin/C-type lectin-like domain (CTL/CTLD) superfamily. The encoded glycoprotein is a small type II membrane receptor with an extracellular C-type lectin-like domain fold and a cytoplasmic domain with an immunoreceptor tyrosine-based activation motif. It functions as a pattern-recognition receptor that recognizes a variety of beta-1,3-linked and beta-1,6-linked glucans from fungi and plants, and in this way plays a role in innate immune response. Alternate transcriptional splice variants, encoding different isoforms, have been characterized. This gene is closely linked to other CTL/CTLD superfamily members on chromosome 12p13 in the natural killer gene complex region. [provided by RefSeq, Jul 2008]

Product images:



Circular map for RC220248



Western blot validation of overexpression lysate (Cat# [LY405151]) using anti-DDK antibody (Cat# [TA50011-100]). Left: Cell lysates from untransfected HEK293T cells; Right: Cell lysates from HEK293T cells transfected with RC220248 using transfection reagent MegaTran 2.0 (Cat# [TT210002]).