

Product datasheet for **RC220245**

CHRDL2 (NM_015424) Human Tagged ORF Clone

Product data:

Product Type:	Expression Plasmids
Product Name:	CHRDL2 (NM_015424) Human Tagged ORF Clone
Tag:	Myc-DDK
Symbol:	CHRDL2
Synonyms:	BNF1; CHL2
Mammalian Cell Selection:	Neomycin
Vector:	pCMV6-Entry (PS100001)
E. coli Selection:	Kanamycin (25 ug/mL)



[View online »](#)

ORF Nucleotide Sequence:

>RC220245 representing NM_015424
 Red=Cloning site Blue=ORF Green=Tags(s)

TTTTGTAATACGACTCACTATAGGGCGGCCGGGAATTCGTCGACTGGATCCGGTACCGAGGAGATCTGCC
 GCC**CGGATCGCC**

ATGGTTCCCGAGGTGAGGGTCTCTCTCTCTGCTGGACTCGCGCTGCTCTGGTCCCCCTGGACTCCC
 ACGCTCGAGCCCGCCAGACATGTTCTGCCTTTCCATGGGAAGAGATACTCCCCGCGCAGAGCTGGCA
 CCCCTACTTGGAGCCACAAGGCCTGATGTACTGCCTGCGCTGTACCTGCTCAGAGGGCGCCCATGTGAGT
 TGTACCGCCTCCACTGTCGCTGTCCACTGCCCCAGCCTGTGACGGAGCCACAGCAATGCTGTCCCA
 AGTGTGTGGAACCTCACACTCCCCTGGACTCCGGGCCACCAAAGTCTGCCAGCACAACGGGACCAT
 GTACCAACACGGAGAGATCTTCAGTGCCCATGAGCTGTTCCCTCCCGCTGCCAACCAAGTGTCTCTC
 TGCAGCTGCACAGAGGGCCAGATCTACTGCGGCCCTCACAACCTGCCCGAACCAGGCTGCCAGCACCCC
 TCCCGCTGCCAGACTCCTGCTGCCAGGCCTGCAAAGATGAGGCAAGTGAAGCAATCGGATGAAGAGGACAG
 TGTGCAGTCGCTCCATGGGGTGAAGACATCCTCAGGATCCATGTTCCAGTGTGCTGGGAGAAAGAGAGGC
 CCGGGCACCCAGCCCCACTGGCCTCAGCGCCCTCTGAGCTTCATCCCTCGCCACTTCAGACCCAAGG
 GAGCAGGCAGCAACTGTCAAGATCGTCTGAAGGAGAAACATAAGAAAGCCTGTGTGCATGGCGGGAA
 GACGTACTCCCACGGGGAGGTGTGGCACCCGGCCTTCCGTGCCTTCGGCCCTTGCCTGCATCCTATGC
 ACCTGTGAGGATGGCCGCCAGGACTGCCAGCGTGTGACCTGTCCCACCGAGTACCCTGCCGTCACCCCG
 AGAAAGTGGTGGGAAGTGTGCAAGATTTGCCAGAGGACAAAGCAGACCCTGGCCACAGTGAAGATCAG
 TTCTACCAGGTGTCCCAAGGCACCGGGCCGGTCTCGTCCACACATCGGTATCCCAAGCCAGACAAC
 CTGCGTCGCTTTGCCCTGGAACACGAGGCCTCGGACTTGGTGGAGATCTACCTCTGGAAGCTGGTAAAAG
 ATGAGGAAACTGAGGCTCAGAGAGGTGAAGTACCTGGCCCAAGGCCACACAGCCAGAATCTCCACTTGA
 CTCAGATCAAGAAAGTCAGGAAGCAAGACTTCCAGAAAGAGGCACAGCACTTCCGACTGCTCGCTGGCCC
 CCACGAAGGTCACTGGAACGTCTTCTAGCCAGACCCTGGAGCTGAAGGTCACGGCCAGTCCAGACAAA
 GTGACCAAGACATAACAAAGACC

ACGCGTACGCGGCCGCTCGAGCAGAAACTCATCTCAGAAGAGGATCTGGCAGCAAATGATATCCTGGATT
 ACAAGGATGACGACGATAAGGTTTAA

Protein Sequence:

>RC220245 representing NM_015424
 Red=Cloning site Green=Tags(s)

MVPEVRVLSLLGLALLWFPLDSHARARPMFCLFHGKRYSPGESWHPYLEPQGLMYCLRCTCSEGAHVS
 CYRLHCPPVHCPQPVTEPQQCCPKCVPHTPSGLRAPPKSCQHNMTMYQHGEIFSAHELFP SRLPNQCVL
 CSCTEQGIYCGLTTCPEPGCPAPLPLPDSCCQACKDEASEQSDEEDSVQSLHGVRHPQDPCSSDAGRKRK
 PGTPAPTGLSAPLSFIPRHFRPKGAGSTTVKIVLKEKHKKACVHGKTYSHGEVWHPAFRAFGPLPCILC
 TCEDGRQDCQRTCPTEYPCRHPKAVAGKCKICPEDKADPGHSEISSTRCPKAPGRVLVHTSVSPSPDN
 LRRFALEHEASDLVEIYLWKLVKDEETEQRGEVPGPRPHSQNLPLDSDQESQEARLPERGTALPTARWP
 PRRSLERLPSPDPGAEGHGQSRQSDQDITKT

TRTRPLEQKLISEEDLAANDILDYKDDDDKV

Chromatograms:

https://cdn.origene.com/chromatograms/mk8009_c09.zip

Restriction Sites:

SgfI-MluI

Cloning Scheme:


ACCN: NM_015424

ORF Size: 1353 bp

OTI Disclaimer: The molecular sequence of this clone aligns with the gene accession number as a point of reference only. However, individual transcript sequences of the same gene can differ through naturally occurring variations (e.g. polymorphisms), each with its own valid existence. This clone is substantially in agreement with the reference, but a complete review of all prevailing variants is recommended prior to use. [More info](#)

OTI Annotation: This clone was engineered to express the complete ORF with an expression tag. Expression varies depending on the nature of the gene.

Components: The ORF clone is ion-exchange column purified and shipped in a 2D barcoded Matrix tube containing 10ug of transfection-ready, dried plasmid DNA (reconstitute with 100 ul of water).

Reconstitution Method:

1. Centrifuge at 5,000xg for 5min.
2. Carefully open the tube and add 100ul of sterile water to dissolve the DNA.
3. Close the tube and incubate for 10 minutes at room temperature.
4. Briefly vortex the tube and then do a quick spin (less than 5000xg) to concentrate the liquid at the bottom.
5. Store the suspended plasmid at -20°C. The DNA is stable for at least one year from date of shipping when stored at -20°C.

RefSeq: [NM_015424.6](#)

RefSeq Size: 1699 bp

RefSeq ORF: 1356 bp

Locus ID: 25884

UniProt ID: [Q6WN34](#)

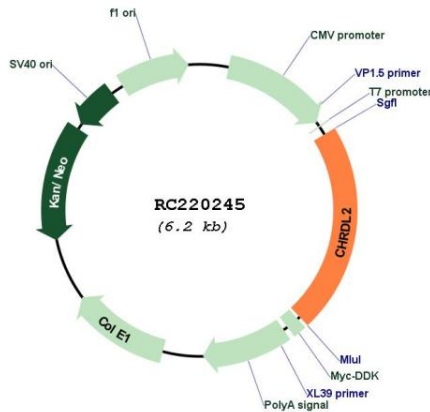
Cytogenetics: 11q13.4

Protein Families: Secreted Protein

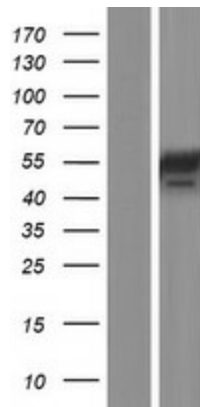
MW: 49.5 kDa

Gene Summary: This gene encodes a member of the chordin family of proteins. Chordin family members are secreted proteins that share a cysteine-rich pro-collagen repeat domain and associate with members of the transforming growth factor beta superfamily. In vitro assays demonstrate a direct interaction between the encoded protein and human activin A. This gene is expressed in many tissues including osteoblasts, where it is differentially expressed during differentiation. In addition, its expression is upregulated in human osteoarthritic joint cartilage, suggesting a role in adult cartilage regeneration. [provided by RefSeq, Jan 2015]

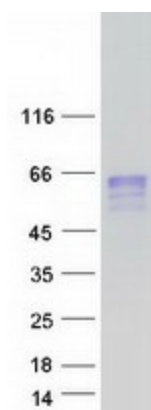
Product images:



Circular map for RC220245



Western blot validation of overexpression lysate (Cat# [LY414584]) using anti-DDK antibody (Cat# [TA50011-100]). Left: Cell lysates from untransfected HEK293T cells; Right: Cell lysates from HEK293T cells transfected with RC220245 using transfection reagent MegaTran 2.0 (Cat# [TT210002]).



Coomassie blue staining of purified CHRDL2 protein (Cat# [TP320245]). The protein was produced from HEK293T cells transfected with CHRDL2 cDNA clone (Cat# RC220245) using MegaTran 2.0 (Cat# [TT210002]).