

Product datasheet for **RC220238**

RPE (NM_006916) Human Tagged ORF Clone

Product data:

Product Type: Expression Plasmids
Product Name: RPE (NM_006916) Human Tagged ORF Clone
Tag: Myc-DDK
Symbol: RPE
Synonyms: RPE2-1
Mammalian Cell Selection: Neomycin
Vector: pCMV6-Entry (PS100001)
E. coli Selection: Kanamycin (25 ug/mL)
ORF Nucleotide Sequence: >RC220238 representing NM_006916
Red=Cloning site Blue=ORF Green=Tags(s)

TTTTGTAATACGACTCACTATAGGGCGGCCGGAATTCGTCGACTGGATCCGGTACCGAGGAGATCTGCC
GCC**CGATCGCC**

ATGCACATGATGGTGTCCAAGCCAGAACAGTGGGTAAAGCCAATGGCTGTAGCAGGAGCCAATCAGTACA
CCTTTCATCTCGAGGCTACTGAGAACCCAGGGCTTTGATTAAGACATTCGGGAGAATGGGATGAAGTC
TTGCTCTGTACCCAGGCTGAAGTGCAGTGGCACAGTCAGGGCCATTGCAGGTTGGCCTTGCCATCAA
CCAGGAACCTCAGTTGAGTATTTGGCACCATGGGCTAATCAGATAGATATGGCCTTGTTATGACAGTGG
AACCGGGTTTGGAGGGCAGAAATTCATGGAAGATATGATGCCAAAGTTCACTGGTTGAGGACCCAGTT
CCCATCTTTGGATATAGAGGTCGATGGTGGAGTAGGTCCTGACACTGTCCATAAATGTGCAGAGGCAGGA
GCTAACATGATTGTCTGGCAGTGTATTATGAGGAGTGAAGACCCAGATCTGTGATCAATCTATTAA
GAAATGTTTGCTCAGAAGCTGCTCAGAAACGTTCTCTTGATCGG

ACGCGTACGCGGCCGCTCGAGCAGAACTCATCTCAGAAGAGGATCTGGCAGCAAATGATATCCTGGATT
ACAAGGATGACGACGATAAGGTTTAA

Protein Sequence: >RC220238 representing NM_006916
Red=Cloning site Green=Tags(s)

MHMMVSKPEQWVKPMAVAGANQYTFHLEATENPGALIKDIRENGMKSCSVTQAEVQWHSQGPLQVGLAIK
PGTSVEYLAPWANQIDMALVMTVEPGFGGQKFMEDMMPKVHWLRTQFPSLDIEVDGGVGPDTVHKCAEAG
ANMIVSGSAIMRSEDPRSVINLLRNVCSAAQKRSLDR

TRTRPLEQKLISEEDLAANDILDYKDDDDKV

Chromatograms: https://cdn.origene.com/chromatograms/ja1464_g06.zip



[View online »](#)

Restriction Sites: SgfI-MluI

Cloning Scheme:



ACCN: NM_006916

ORF Size: 534 bp

OTI Disclaimer: The molecular sequence of this clone aligns with the gene accession number as a point of reference only. However, individual transcript sequences of the same gene can differ through naturally occurring variations (e.g. polymorphisms), each with its own valid existence. This clone is substantially in agreement with the reference, but a complete review of all prevailing variants is recommended prior to use. [More info](#)

OTI Annotation: This clone was engineered to express the complete ORF with an expression tag. Expression varies depending on the nature of the gene.

Components: The ORF clone is ion-exchange column purified and shipped in a 2D barcoded Matrix tube containing 10ug of transfection-ready, dried plasmid DNA (reconstitute with 100 ul of water).

Reconstitution Method:

1. Centrifuge at 5,000xg for 5min.
2. Carefully open the tube and add 100ul of sterile water to dissolve the DNA.
3. Close the tube and incubate for 10 minutes at room temperature.
4. Briefly vortex the tube and then do a quick spin (less than 5000xg) to concentrate the liquid at the bottom.
5. Store the suspended plasmid at -20°C. The DNA is stable for at least one year from date of shipping when stored at -20°C.

RefSeq: [NM_006916.2](#)

RefSeq Size: 2130 bp

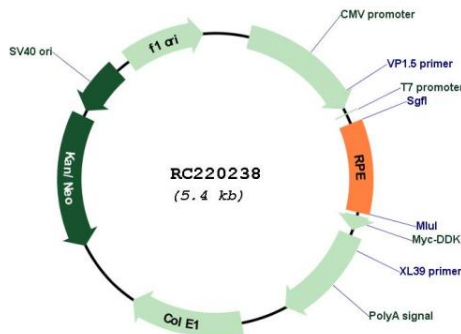
RefSeq ORF: 537 bp

Locus ID: 6120

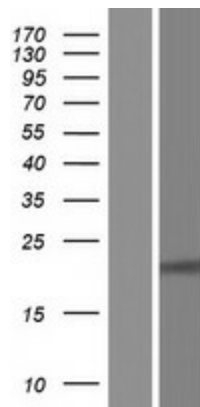
UniProt ID: [Q96AT9](#)

Cytogenetics:	2q34
Domains:	Ribul_P_3_epim
Protein Pathways:	Metabolic pathways, Pentose and glucuronate interconversions, Pentose phosphate pathway
MW:	19.4 kDa
Gene Summary:	Catalyzes the reversible epimerization of D-ribulose 5-phosphate to D-xylulose 5-phosphate. [UniProtKB/Swiss-Prot Function]

Product images:



Circular map for RC220238



Western blot validation of overexpression lysate (Cat# [LY416326]) using anti-DDK antibody (Cat# [TA50011-100]). Left: Cell lysates from untransfected HEK293T cells; Right: Cell lysates from HEK293T cells transfected with RC220238 using transfection reagent MegaTran 2.0 (Cat# [TT210002]).