

## Product datasheet for **RC220200**

### CD300E (NM\_181449) Human Tagged ORF Clone

#### Product data:

**Product Type:** Expression Plasmids  
**Product Name:** CD300E (NM\_181449) Human Tagged ORF Clone  
**Tag:** Myc-DDK  
**Symbol:** CD300E  
**Synonyms:** CD300LE; CLM-2; CLM2; CMRF35-A5; IREM-2; IREM2; PlgR-2; PlgR2  
**Mammalian Cell Selection:** Neomycin  
**Vector:** pCMV6-Entry (PS100001)  
**E. coli Selection:** Kanamycin (25 ug/mL)  
**ORF Nucleotide Sequence:** >RC220200 ORF sequence  
 Red=Cloning site Blue=ORF Green=Tags(s)

TTTTGTAATACGACTCACTATAGGGCGGCCGGAATTCGTCGACTGGATCCGGTACCGAGGAGATCTGCC  
 GCC**CGATCGCC**

ATGTGGCTGCTCCAGCTCTACTCCTTCTCTGCCTCTCAGGCTGTTTGTCTCTGAAGGGCCCCGGCTCTG  
 TGACTGGCACTGCGGGGACTCTCTGACAGTGTGGTGTGAGTATGAGAGCATGTACAAGGGATATAACAA  
 GTACTGGTCCGAGGACAGTACGACACGTATGTGAGAGCATTGTGGAGACCAAGGGAGAAGAGAAGGTG  
 GAGAGGAATGGCCGCGTGTCCATCAGAGACCACCCGGAGGCTCTCGCCTTCACTGTGACCATGCAGAACC  
 TCAATGAAGATGATGCTGGATCTTACTGGTGCAAATTCAGACAGTGTGGTCTGGATTTCATGGTCACG  
 CGATCCCTCGGACTGGTTAGGGTGTATGTTTCCCAAGCAATTACAACCCCAAGGAGGACCACACATCCA  
 GCCACACCTCCATCTTCTGGTGGTGAACCCCTGGGCGAAACCTCAGCACCAGGGAGGTGTTGACCCAAA  
 ATTCAGGGTCCGGCTCAGCAGCCCTCACTTCTGCTCGTGGTCTTCTGAAGCTGCCCTGCTCCTGAG  
 CATGCTGGGTGCTGTTTCTGGTGAACAGGCCTCAGTGGGCTCCTCCTGGAAGA

**ACGCGT**ACGCGGCCGCTCGAGCAGAACTCATCTCAGAAGAGGATCTGGCAGCAAATGATATCCTGGATT  
 ACAAGGATGACGACGATAAGGTTTAA

**Protein Sequence:** >RC220200 protein sequence  
 Red=Cloning site Green=Tags(s)

MWLLPALLLLCLSGCLSLKGPVSVTGTAGDSLTVWCQYESMYKGYNKYWCRGQYDTSCEIVETKGEEKV  
 ERNGRVSIRDHPEALAFVTVMQNLNEDDAGSYWCKIQTVVWLDSWRDPSDLVRVYVSPAITTPRRTHP  
 ATPPIFLVVNPNRNLSTREVLTONSGFRLSSPHFLLVLLKPLLLSMLGAVFVWNRPQWAPPGR

**TRTRPLEQKLI**SEEDLAANDILDYKDDDDKV

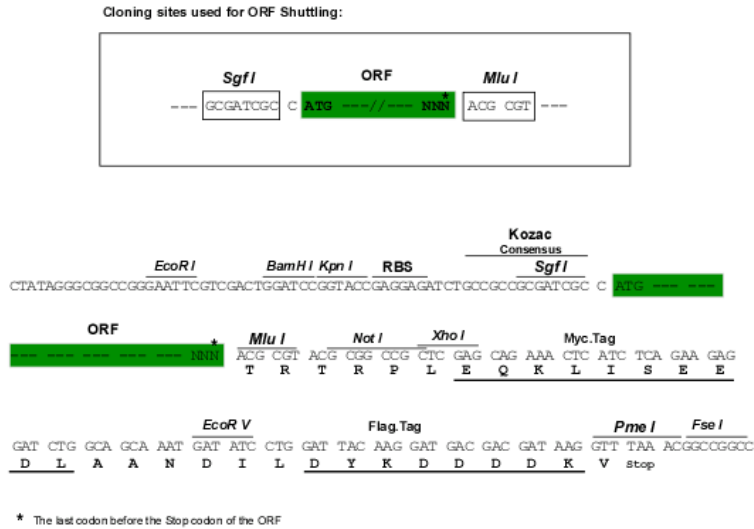


[View online »](#)

Chromatograms: [https://cdn.origene.com/chromatograms/mk6449\\_a10.zip](https://cdn.origene.com/chromatograms/mk6449_a10.zip)

Restriction Sites: SgfI-MluI

Cloning Scheme:



ACCN: NM\_181449

ORF Size: 615 bp

OTI Disclaimer: The molecular sequence of this clone aligns with the gene accession number as a point of reference only. However, individual transcript sequences of the same gene can differ through naturally occurring variations (e.g. polymorphisms), each with its own valid existence. This clone is substantially in agreement with the reference, but a complete review of all prevailing variants is recommended prior to use. [More info](#)

OTI Annotation: This clone was engineered to express the complete ORF with an expression tag. Expression varies depending on the nature of the gene.

Components: The ORF clone is ion-exchange column purified and shipped in a 2D barcoded Matrix tube containing 10ug of transfection-ready, dried plasmid DNA (reconstitute with 100 ul of water).

Reconstitution Method:

1. Centrifuge at 5,000xg for 5min.
2. Carefully open the tube and add 100ul of sterile water to dissolve the DNA.
3. Close the tube and incubate for 10 minutes at room temperature.
4. Briefly vortex the tube and then do a quick spin (less than 5000xg) to concentrate the liquid at the bottom.
5. Store the suspended plasmid at -20°C. The DNA is stable for at least one year from date of shipping when stored at -20°C.

RefSeq: [NM\\_181449.3](#)

RefSeq Size: 3525 bp

RefSeq ORF: 618 bp

Locus ID: 342510

UniProt ID: [Q496F6](#)

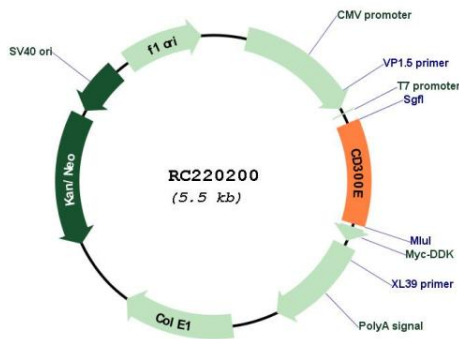
Cytogenetics: 17q25.1

Protein Families: Druggable Genome, Transmembrane

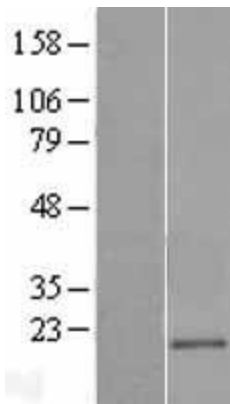
MW: 23 kDa

Gene Summary: This gene encodes a member of the CD300 glycoprotein family of cell surface proteins expressed on myeloid cells. The protein interacts with the TYRO protein tyrosine kinase-binding protein and is thought to act as an activating receptor. [provided by RefSeq, Nov 2012]

### Product images:



Circular map for RC220200



Western blot validation of overexpression lysate (Cat# [LY405761]) using anti-DDK antibody (Cat# [TA50011-100]). Left: Cell lysates from untransfected HEK293T cells; Right: Cell lysates from HEK293T cells transfected with RC220200 using transfection reagent MegaTran 2.0 (Cat# [TT210002]).