

## Product datasheet for RC220196

### GALR3 (NM\_003614) Human Tagged ORF Clone

#### Product data:

Product Type: Expression Plasmids  
 Product Name: GALR3 (NM\_003614) Human Tagged ORF Clone  
 Tag: Myc-DDK  
 Symbol: GALR3  
 Mammalian Cell Selection: Neomycin  
 Vector: pCMV6-Entry (PS100001)  
 E. coli Selection: Kanamycin (25 ug/mL)  
 ORF Nucleotide Sequence: >RC220196 representing NM\_003614  
 Red=Cloning site Blue=ORF Green=Tags(s)

TTTTGTAATACGACTCACTATAGGGCGGCCGGGAATTCGTCGACTGGATCCGGTACCGAGGAGATCTGCC  
 GCC**CGATCGCC**

ATGGCTGATGCCAGAACATTTCACTGGACAGCCAGGGAGTGTGGGGCCGTGGCAGTGCCTGTGGTCT  
 TTGCCCTAATCTTCTGCTGGGCACAGTGGGCAATGGGCTGGTGTGGCAGTGCCTCTGCAGCCTGGCC  
 GAGTGCCTGGCAGGAGCCTGGCAGCACCGACCTGTTTCATCCTCAACCTGGCGGTGGCTGACCTCTGC  
 TTCATCCTGTGCTGCGTGCCTTCCAGGCCACCATCTACACGCTGGATGCCTGGCTCTTTGGGGCCCTCG  
 TCTGCAAGGCCGTGCACCTGCTCATCTACCTACCATGTACGCCAGCAGTTTACGCTGGCTGCTGTCTC  
 CGTGGACAGGTACCTGGCCGTGCGGCACCCGCTGCGCTCGCGCGCCCTGCGCACGCCGCGTAACGCCCGC  
 GCCGAGTGGGGCTGGTGTGGCTGCTGGCGCGCTCTTCTCGGCCCTACCTCAGCTACTACGGCACCG  
 TGGCTACGGCGCGCTGGAGCTCTGCGTGCCTGGCTGGGAGGACGCGCGCCGCCGCGCCCTGGACGTGGC  
 CACCTTGGCTGCCGGCTACCTGCTGCCCGTGGCCGTGGTGGAGCCTGGCCTACGGGCGCACGCTGCGCTT  
 CTGTGGGCCCGCTGGGTCCCGGGCGCGGGCGGCCGAGGCGCGGGAGGGCGACGGGCCCGCGCGG  
 GGCGGCCATGCTGGCGGTGGCCGCTCTACGCGCTCTGCTGGGGTCCGCACCACGCGCTCATCTGTG  
 CTTCTGGTACGGCCGCTTCGCTTACGCCCGGCCACCTACGCTGCCGCTGGCCTCACACTGCCTGGCC  
 TACGCAACTCCTGCCTCAACCCGCTCGTCTACGCGCTCGCTCGCGCCACTTCCGCGCGGCTTCCGCC  
 GCCTGTGGCCGTGCGGCCGCCGACGCCGCTACCGTGCCTGCCGCGCCCTTGGCTCGCGTCCGCCCGCGTC  
 CTGGGGCCACCCGGCTGCCCGGAGACGCCCGCCCTAGCGGGAGGCTGTGGCTGGTGGCGGCCAGGGC  
 CCGGAGCCAGGGAGGGACCCGTCACGGCGGAGAGGCTGCCGAGGACCGAA

**ACGCGT**ACGCGGCCGCTCGAGCAGAACTCATCTCAGAAGAGGATCTGGCAGCAAATGATATCCTGGATT  
 ACAAGGATGACGACGATAAGGTTTAA



**Protein Sequence:** >RC220196 representing NM\_003614  
Red=Cloning site Green=Tags(s)

MADAQNISLDSPGSVGAVAVPVVFALIFLLGTVGNGLVLAVLLQPGPSAWQEPGSTTDLFILNLAVADLC  
 FILCCVPFQATIYTLDAWLFGALVCKAVHLLIYLTMYASSFTLAAVSVDRYLAVRHPLRSRALRTPRNAR  
 AAVGLVWLLAALFSAPYLSYYGTVRYGALELCVPAWEDARRRALDVATFAAGYLLPVAVVSLAYGRTLRF  
 LWAAVGPAGAAAAEARRRATGRAGRAMLAVAALYALCWGPHHALILCFWYGRFAFSPATYACRLASHCLA  
 YANSCLNPLVYALASRHFRRFRRLWPCGRRRRYRARRALRRVRPASSGPPGCPGDARPSGRLLAGGGQG  
 PEPREGPVHGGEAARGPE

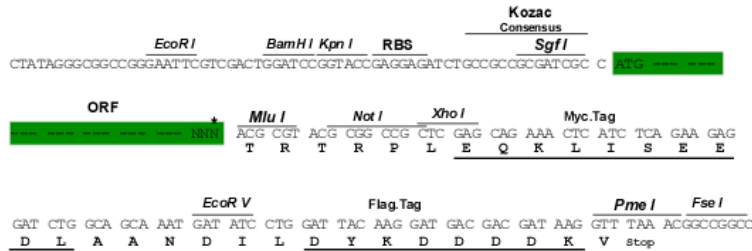
TRTRPLEQKLISEEDLAANDILDYKDDDDKV

**Chromatograms:** [https://cdn.origene.com/chromatograms/mk6217\\_h07.zip](https://cdn.origene.com/chromatograms/mk6217_h07.zip)

**Restriction Sites:** SgfI-MluI

**Cloning Scheme:**

Cloning sites used for ORF Shuttling:



**ACCN:** NM\_003614

**ORF Size:** 1104 bp

**OTI Disclaimer:** The molecular sequence of this clone aligns with the gene accession number as a point of reference only. However, individual transcript sequences of the same gene can differ through naturally occurring variations (e.g. polymorphisms), each with its own valid existence. This clone is substantially in agreement with the reference, but a complete review of all prevailing variants is recommended prior to use. [More info](#)

**OTI Annotation:** This clone was engineered to express the complete ORF with an expression tag. Expression varies depending on the nature of the gene.

**Components:** The ORF clone is ion-exchange column purified and shipped in a 2D barcoded Matrix tube containing 10ug of transfection-ready, dried plasmid DNA (reconstitute with 100 ul of water).

**Reconstitution Method:**

1. Centrifuge at 5,000xg for 5min.
2. Carefully open the tube and add 100ul of sterile water to dissolve the DNA.
3. Close the tube and incubate for 10 minutes at room temperature.
4. Briefly vortex the tube and then do a quick spin (less than 5000xg) to concentrate the liquid at the bottom.
5. Store the suspended plasmid at -20°C. The DNA is stable for at least one year from date of shipping when stored at -20°C.

**RefSeq:** [NM\\_003614.1](#), [NP\\_003605.1](#)

**RefSeq Size:** 1157 bp

**RefSeq ORF:** 1107 bp

**Locus ID:** 8484

**UniProt ID:** [O60755](#)

**Cytogenetics:** 22q13.1

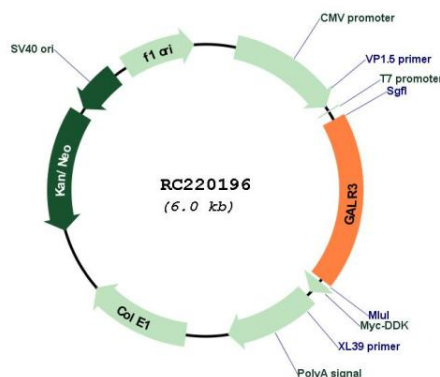
**Protein Families:** Druggable Genome, GPCR, Transmembrane

**Protein Pathways:** Neuroactive ligand-receptor interaction

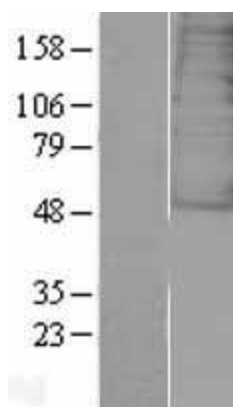
**MW:** 39.4 kDa

**Gene Summary:** The neuropeptide galanin modulates a variety of physiologic processes including cognition/memory, sensory/pain processing, hormone secretion, and feeding behavior. The human galanin receptors are G protein-coupled receptors that functionally couple to their intracellular effector through distinct signaling pathways. GALR3 is found in many tissues and may be expressed as 1.4-, 2.4-, and 5-kb transcripts [provided by RefSeq, Jul 2008]

### Product images:



Circular map for RC220196



Western blot validation of overexpression lysate (Cat# [LY418545]) using anti-DDK antibody (Cat# [TA50011-100]). Left: Cell lysates from untransfected HEK293T cells; Right: Cell lysates from HEK293T cells transfected with RC220196 using transfection reagent MegaTran 2.0 (Cat# [TT210002]).