

Product datasheet for **RC220195**

POTEG (NM_001005356) Human Tagged ORF Clone

Product data:

Product Type:	Expression Plasmids
Product Name:	POTEG (NM_001005356) Human Tagged ORF Clone
Tag:	Myc-DDK
Symbol:	POTEG
Synonyms:	A26C2; ACTBL1; CT104.4; POTE-14; POTE14; POTE14alpha; POTE22
Mammalian Cell Selection:	Neomycin
Vector:	pCMV6-Entry (PS100001)
E. coli Selection:	Kanamycin (25 ug/mL)



[View online »](#)

ORF Nucleotide Sequence:

>RC220195 representing NM_001005356
 Red=Cloning site Blue=ORF Green=Tags(s)

TTTTGTAATACGACTCACTATAGGGCGGCCGGAATTCGTCGACTGGATCCGGTACCGAGGAGATCTGCC
 GCC**CGGATCGCC**

ATGGTGGCTGAGGCTGGTTCAATGCCGGCTGCCTCCTCTGTGAAGAAGCCATTTGGTCTCAGAAGCAAGA
 TGGGCAAGTGGTCCGCCACTGCTTCCCCTGGTGCAGGGGAGCGGCAAGAGCAACGTGGGCACTTCTGG
 AGACCACGACGATTCTGCTATGAAGACACTCAGGAGCAAGATGGGCAAGTGGTCCGCCACTGCTTCCCC
 TGGTGCAGGGGAGCAGCAAGAGCAACGTGGGCACTTCTGGAGACCACGACGACTCTGCTATGAAGACAC
 TCAGGAGCAAGATGGGCAAGTGGTGTGCCACTGCTTCCCCTGCTGCAGGGGAGCGGCAAGAGCAAAGT
 GGGCCCTTGGGGAGACTACGACGACAGCGCTTTCATGGAGCCGAGGTACCACGTCCGTCGAGAAGATCTG
 GACAAGCTCCACAGAGCTGCCTGGTGGGTAAAGTCCCCAGAAAGGATCTCATCGTCATGCTCAAGGACA
 CTGACATGAACAAGAAGGACAAGCAAAAAGAGGACTGCTCTACATCTGGCCTCTGCCAATGGAATTCAGA
 AGTAGTAAACTCCTGCTGGACAGACGATGCACTTAATATCCTTGACAACAAAAGAGGACAGCTCTG
 ACAAAAGCCGTACAATGCCGGGAAGATGAATGTGCGTTAATGTTGCTGGAACATGGCACTGATCCGAATA
 TTCCAGATGAGTATGGAATACCGCTCTACACTATGCTATCTACAATGAAGATAAATTAATGGCCAAAGC
 ACTGCTCTTATACGGTGTGATATCGAATCAAAAAACAAGCATGGCCTCACACCACTGTTACTTGGTGTGA
 CATGAGCAAAAACAGCAAGTGGTGAATTTTTAATCAAGAAAAAGCAAAATTTAATGCACTGGATAGAT
 ATGGAAGAAGTGTCTCATACTTGTGTATGTTGTGGATCGGCAAGTATAGTCAGCCTTCTACTTGAGCA
 AAACATTGATGTATCTTCAAGATCTATCTGGACAGACGGCCAGAGAGTATGCTGTTTCTAGTCATCAT
 AATGTAATTTGCCAGTTACTTTCTGACTACAAAGAAAAACAGATGCTAAAAGTCTCTTCTGAAAACAGCA
 ATCCAGAACAAGACTTAAAGTACATCAGAGGAAGAGTACAAAGGCTTAAAGGAAGTGAATAATGCA
 GCCAGAGGAAATGTCTCAAGAACCAGAAAATAAAGGGTGGTGTAGAAAAGTTGAAGAAGAAATGAAG
 AAGCACGGAAGTACTCATATGGATTCCCAGAAAACCTGCCTAACGGTGGCACTGCTGACATGGTGTGATG
 ATGGATTAATCCACCAAGGAAAAGCAGAACACCTGAAAGCCAGCAATTTCTGACACTGAGAATGAACA
 GTATCACAGTGTGAACAAAATGATACTCAGAAGCAACTTTCTGAAGAACAGAACTGGAATATTACAA
 GATGAGATTCTGATTCATGAAGAAAAGCAGATAGAAGTGGCTGAAAATGAATTC

ACGCGTACGCGGCCGCTCGAGCAGAAACTCATCTCAGAAGAGGATCTGGCAGCAATGATATCCTGGATT
 ACAAGGATGACGACGATAAGGTTTAA

Protein Sequence:

>RC220195 representing NM_001005356
 Red=Cloning site Green=Tags(s)

MVAEAGSMPAASSVKKPFGLRSKMGKWRHCFPWCRGSGKSNVGTSGDHDDSAMKTLRSKMGKWRHCFP
 WCRGSSKSNVGTSGDHDDSAMKTLRSKMGKWCCHCFPCCRGSGKSKVGPWGDYDDSAFMEPRYHVRREDL
 DKLHRAAWGKVPRKDLIVMLKDTDMNKKDKQKRTALHLASANGNSEVVKLLDRRCQLNILDNKKRTAL
 TKAVQCREDECALMLLEHGTDPNIPDEYGNALHYAIYNEDKLMAKALLLYGADIESKNKHGLTPLLLGV
 HEQKQVVKFLIKKANLNALDRYGRALILAVCCGSASIVSLLLEQNIDVSSQDLSGQTAREYAVSSH
 NVICQLLSDYKEKQMLKVSSSENSPEQDLKLTSEESQRLKSENSQPEEMSQPEINKGGDRKVEEEMK
 KHGSTMGFENLPNGATADNGDDGLIPPRKSRTPESQQFPDTEQYHSDEQNDTQKQLSEEQNTGILO
 DEILIHEEKQIEVAENEF

TRTRPLEQKLISEEDLAANDILDYKDDDDKV

Chromatograms:

https://cdn.origene.com/chromatograms/mk8019_h09.zip

Restriction Sites:

Sgfl-Mlul

Cloning Scheme:



ACCN: NM_001005356

ORF Size: 1524 bp

OTI Disclaimer: The molecular sequence of this clone aligns with the gene accession number as a point of reference only. However, individual transcript sequences of the same gene can differ through naturally occurring variations (e.g. polymorphisms), each with its own valid existence. This clone is substantially in agreement with the reference, but a complete review of all prevailing variants is recommended prior to use. [More info](#)

OTI Annotation: This clone was engineered to express the complete ORF with an expression tag. Expression varies depending on the nature of the gene.

Components: The ORF clone is ion-exchange column purified and shipped in a 2D barcoded Matrix tube containing 10ug of transfection-ready, dried plasmid DNA (reconstitute with 100 ul of water).

- Reconstitution Method:
1. Centrifuge at 5,000xg for 5min.
 2. Carefully open the tube and add 100ul of sterile water to dissolve the DNA.
 3. Close the tube and incubate for 10 minutes at room temperature.
 4. Briefly vortex the tube and then do a quick spin (less than 5000xg) to concentrate the liquid at the bottom.
 5. Store the suspended plasmid at -20°C. The DNA is stable for at least one year from date of shipping when stored at -20°C.

RefSeq: [NM_001005356.1](#), [NP_001005356.1](#)

RefSeq Size: 1926 bp

RefSeq ORF: 1527 bp

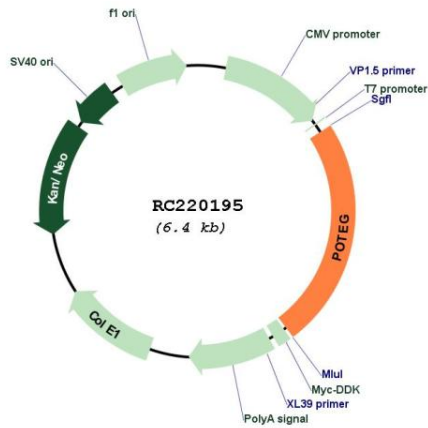
Locus ID: 404785

UniProt ID: [Q6S5H5](#)

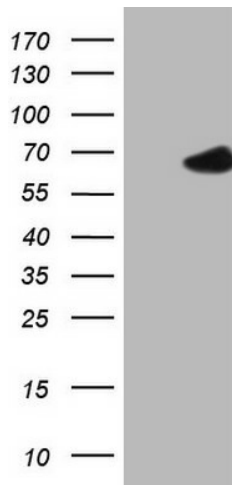
Cytogenetics: 14q11.2

MW: 56.9 kDa

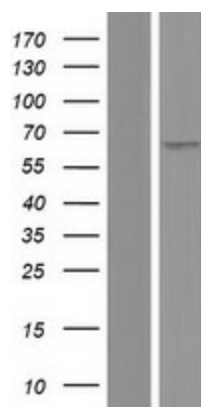
Product images:



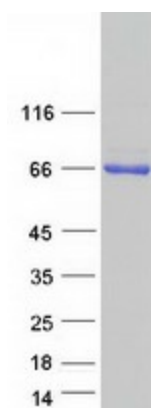
Circular map for RC220195



HEK293T cells were transfected with the pCMV6-ENTRY control (Cat# [PS100001], Left lane) or pCMV6-ENTRY POTEG (Cat# RC220195, Right lane) cDNA for 48 hrs and lysed. Equivalent amounts of cell lysates (5 ug per lane) were separated by SDS-PAGE and immunoblotted with anti-POTEG (Cat# [TA808095])(1:2000). Positive lysates [LY423696] (100ug) and [LC423696] (20ug) can be purchased separately from OriGene.



Western blot validation of overexpression lysate (Cat# [LY423696]) using anti-DDK antibody (Cat# [TA50011-100]). Left: Cell lysates from untransfected HEK293T cells; Right: Cell lysates from HEK293T cells transfected with RC220195 using transfection reagent MegaTran 2.0 (Cat# [TT210002]).



Coomassie blue staining of purified POTEG protein (Cat# [TP320195]). The protein was produced from HEK293T cells transfected with POTEG cDNA clone (Cat# RC220195) using MegaTran 2.0 (Cat# [TT210002]).