

## Product datasheet for **RC220191**

### ZFP37 (NM\_003408) Human Tagged ORF Clone

#### Product data:

Product Type:	Expression Plasmids
Product Name:	ZFP37 (NM_003408) Human Tagged ORF Clone
Tag:	Myc-DDK
Symbol:	ZFP37
Synonyms:	zfp-37; ZNF906
Mammalian Cell Selection:	Neomycin
Vector:	pCMV6-Entry (PS100001)
E. coli Selection:	Kanamycin (25 ug/mL)



[View online »](#)

**ORF Nucleotide Sequence:**

>RC220191 representing NM\_003408  
 Red=Cloning site Blue=ORF Green=Tags(s)

TTTTGTAATACGACTCACTATAGGGCGGCCGGAATTCGTCGACTGGATCCGGTACCGAGGAGATCTGCC  
 GCC**CGCATCGCC**

ATGTCGGTCTCCAGCGGCTCCAGATTCTGACAAAGCCAGAGACCGTGGACCGGAGGAGAAGTCCGGAAA  
 CGACCAAAGAGGCGGGCGACCACTGGAGATGGCTGTGTCCGAGCCCAGGCCAGCGCCGGAATGGAA  
 GCAACTGGATCCTGCTCAGAGCAACCTGTATAATGATGTGATGCTGGAGAATACTGCAACCAAGCCTCA  
 ATGGGGTGTCAAGCTCCCAAACCAGACATGATCTCCAAGTTGGAAAAAGGAGAAGCACCATGGTTGGGGA  
 AGGGGAAAAGACCCAGTCAAGTTGTCCAAGTAAATAGCAAGACCCAAGCAAAAAGAACTGATGGAAA  
 AGTCCAGAAAGATGATGACCAGCTTAAAAATCCAGAAATCTCAAAACAACTCCTCAGGGAAGTTGCA  
 GTCAAGAAGAAAACCTCAAGCTAAGAAGAATGCCAGTACTGTGGTTCCTGGGAAAAAAAATAATTTGC  
 AAAAAACATGTTCTTCAAAGAAAAGGCTTCTTAAATTTGAGTCATGTGGAAAAATTTTGAACAGAA  
 TTTAGATTTACCTGATCACTCAAGAACTGTGTAAGAAAGGAAATCTGATGCAGCTAAAGAACACAAGAAG  
 TCATTAACCATAGCTTATCTGATACAAGGAAAGGCAAAAAGCAAACTGGAAAGAAACATGAGAAATAT  
 CCAGCCATAGCTCATCTGATAAGTGTAAACAAAACCTGGCAAAAACATGACAAATATGCTGTCATAGTTC  
 ATCCCATATTAACAGGACAAAATTCAACTGGAGAGAAACATGAGAAATCACCCAGCCTTAGCTCATCT  
 ACTAAGCATGAAAACCTCAAGCTTGTGTGAAACCTATGAATGTAATCAATGTGGAAAGTTCTCAGCC  
 AATAACAAGGACTCATTGACCATCAGAGAGTTCATACTGGGGAGAAACCATATGAATGTAATGAATGTGG  
 GATAGCCTTTAGCCAAAAGTCACACCTTGTGTACATCAGAGAATCACACCGGAGAAAAACCATATGAA  
 TGTATTCAGTGTGGCAAAGCCCATGGTCATAAACATGCACTCACTGACCATCTAAGAATTCATCTGGAG  
 AAAAGCCCTATGAATGTGCTGAATGTGGAAAACCTTCAGACACAGCTCAAACCTTATTCACATGTGAG  
 ATCTCACACAGGTGAGAAGCCATATGAATGTAAGGAATGTGGAAAGTCTTTTAGGTATAAATCATCTCTT  
 ACCGAACATGTGAGAACACATACAGGTGAATACCATATGAATGCAATGAATGTGAAAAGCCTTTAAGT  
 ATAGCTCATCCCTTACTAAACACATGAGAATTCATACAGGTGAGAAAACCTTTGAATGTAATGAATGTGG  
 GAAAGCTTTCAGCAAGAAGTCACACCTCATTATACATCAAAGAATCATACTAAGGAGAAACCTTATAAA  
 TGTAATGAGTGTGAAAAGCCTTTGGACATAGCTCATCTTACTTACCATATGAGAATCATAACAGGTG  
 AAAGTCCCTTTGAATGTAATCAATGTGGAAAGGCTTTAAACAAATGAAGGCCTTACTCAACATCAGAG  
 AGTTCATACTGGAGAGAAACCGTATGAGTGAATGAATGTGGAAAGCCTTTAGCCAAAAGTCTCACCTC  
 ATGTACATCAGAGAATCATACTGGGGAGAAACCTTATGAATGTAAAGTGTGAAAAGCCTTTAATG  
 CAAAATCAGAGCTTGTATACATCAGCGATCCCACTGGAGAAAAACCTATGAATGTAATGAATGTGG  
 GAAAACCTTCAAACAAAATGCATCCCTAACCAACATGTGAAAACCTATTGAGAATAAATCTCATGAG

**ACGCGT**ACGCGGCCGCTCGAGCAGAACTCATCTCAGAAGAGGATCTGGCAGCAATGATATCCTGGATT  
 ACAAGGATGACGACGATAAGGTTTAA

**Protein Sequence:**

>RC220191 representing NM\_003408  
 Red=Cloning site Green=Tags(s)

MSVSSGVQILTKPETVDRRRSAETTKEAGRPLEMAVSEPEASAAEWKQLDPAQSNLYNDVMLENYCNQAS  
 MGCQAPKPDMSKLEKGEAPWLKGGKRPSSQGCPSKIARPKQKETDGKVQKDDDLQENIQSQNKLLREVA  
 VKKKTQAKKNGSDCGSLGKKNLHKKHVPSSKRLLKFESCGKILKQNLDPHSRNCVKKRSDAAKEHKK  
 SFNHSLSDTRKGGKQTGKKHEKLSHSSSDKCNKTGKKHDKLCCSSSHIKQDKIQTGEKHEKSPSSSS  
 TKHEKPQACVKPYECNQCGKVL SHKQGL IDHQRVHTGEKPYECNECGIAFSQKSHLVVHQRTHTEKPYE  
 CIQCGKAHGKHALTDHLRIHTGEKPYECAECGKTFRHSSNLIQHVSHTGEKPYECKEKGKSFYNSL  
 TEHVRTHTEIPYECNECGKAFKYSSSLTKHMRHTGEKPFECNECGKAFSKKSHLIIHQRTHTKEKPYK  
 CNECGKAFGHSSSLTYHMRHTGESPFECNQCGKGFQIEGLTQHQRVHTGEKPYECNECGKAFSQQSHL  
 IVHQRTHTEKPYECNECEKAFNAKSQLVIHQRSHTGEKPYECNECGKTFKQNASLTKHVKTHSEDKSHE

**TR**TRPLEQKLISEEDLAANDILDYKDDDDKV

**Chromatograms:** [https://cdn.origene.com/chromatograms/mk6276\\_a10.zip](https://cdn.origene.com/chromatograms/mk6276_a10.zip)

**Restriction Sites:** SgfI-MluI

**Cloning Scheme:**



**ACCN:** NM\_003408

**ORF Size:** 1890 bp

**OTI Disclaimer:** The molecular sequence of this clone aligns with the gene accession number as a point of reference only. However, individual transcript sequences of the same gene can differ through naturally occurring variations (e.g. polymorphisms), each with its own valid existence. This clone is substantially in agreement with the reference, but a complete review of all prevailing variants is recommended prior to use. [More info](#)

**OTI Annotation:** This clone was engineered to express the complete ORF with an expression tag. Expression varies depending on the nature of the gene.

**Components:** The ORF clone is ion-exchange column purified and shipped in a 2D barcoded Matrix tube containing 10ug of transfection-ready, dried plasmid DNA (reconstitute with 100 ul of water).

**Reconstitution Method:**

1. Centrifuge at 5,000xg for 5min.
2. Carefully open the tube and add 100ul of sterile water to dissolve the DNA.
3. Close the tube and incubate for 10 minutes at room temperature.
4. Briefly vortex the tube and then do a quick spin (less than 5000xg) to concentrate the liquid at the bottom.
5. Store the suspended plasmid at -20°C. The DNA is stable for at least one year from date of shipping when stored at -20°C.

**RefSeq:** [NM\\_003408.3](#)

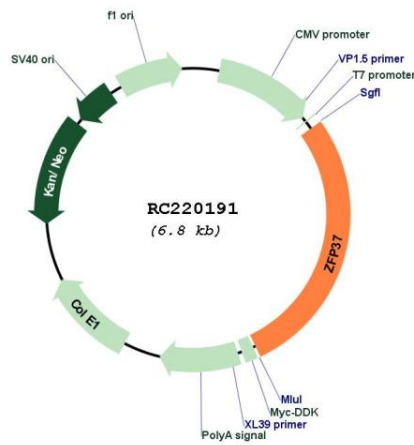
**RefSeq Size:** 2752 bp

**RefSeq ORF:** 1893 bp

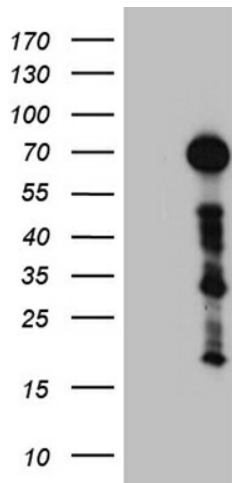
**Locus ID:** 7539  
**UniProt ID:** [Q9Y6Q3](#)  
**Cytogenetics:** 9q32  
**Domains:** KRAB, zf-C2H2  
**Protein Families:** Transcription Factors  
**MW:** 71 kDa

**Gene Summary:** This gene encodes a transcription factor that belongs to a large family of zinc finger proteins. A similar protein in mouse is thought to play a role in regulating the structures of the nucleolus and centromere in neurons. Alternate splicing results in multiple transcript variants. [provided by RefSeq, Sep 2013]

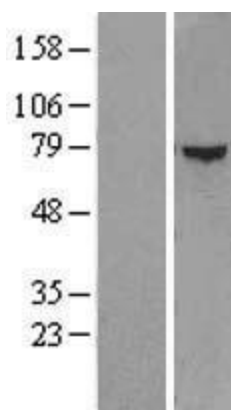
### Product images:



Circular map for RC220191



HEK293T cells were transfected with the pCMV6-ENTRY control (Cat# [PS100001], Left lane) or pCMV6-ENTRY ZFP37 (Cat# RC220191, Right lane) cDNA for 48 hrs and lysed. Equivalent amounts of cell lysates (5 ug per lane) were separated by SDS-PAGE and immunoblotted with anti-ZFP37 (Cat# [TA810229])(1:2000). Positive lysates [LY418700] (100ug) and [LC418700] (20ug) can be purchased separately from OriGene.



Western blot validation of overexpression lysate (Cat# [LY418700]) using anti-DDK antibody (Cat# [TA50011-100]). Left: Cell lysates from untransfected HEK293T cells; Right: Cell lysates from HEK293T cells transfected with RC220191 using transfection reagent MegaTran 2.0 (Cat# [TT210002]).