

Product datasheet for **RC220174**

C18orf10 (TPGS2) (NM_015476) Human Tagged ORF Clone

Product data:

Product Type:	Expression Plasmids
Product Name:	C18orf10 (TPGS2) (NM_015476) Human Tagged ORF Clone
Tag:	Myc-DDK
Symbol:	C18orf10
Synonyms:	C18orf10; HMFN0601; L17; PGs2
Mammalian Cell Selection:	Neomycin
Vector:	pCMV6-Entry (PS100001)
E. coli Selection:	Kanamycin (25 ug/mL)
ORF Nucleotide Sequence:	>RC220174 ORF sequence Red=Cloning site Blue=ORF Green=Tags(s)

TTTTGTAATACGACTCACTATAGGGCGGCCGGAATTCGTCGACTGGATCCGGTACCGAGGAGATCTGCC
GCC**CGATCGCC**

ATGGAGGAGGAGGCATCGTCCCCGGGGCTGGGCTGCAGCAAGCCGCACCTGGAGAAGCTGACCCTGGGCA
TCACGCGCATCTAGAATCTTCCCAGGTGTGACTGAAGTGACCATCATAGAAAAGCCTCTGCTGAACG
TCATATGATTTCTTCTGGGAACAAAAGAATAACTGTGTGATGCCTGAAGATGTGAAGAAGCTTTACCTG
ATGACCAATGGCTTCCACATGACATGGAGTGTGAAGCTGGATGAGCACATCATTCCACTGGGAAGCATGG
CAATTAACAGCATCTCAAAGTACTCAGCTCACCCAGTCTTCCATGTATCACTTCTAATGCACCCAC
TCTGGCAGACCTGGAGGACGATACACATGAAGCCAGTGATGATCAGCCAGAGAAGCCTCACTTTGACTCT
CGCAGTGTGATATTTGAGCTGGATTCATGCAATGGCAGTGGGAAAAGTTTGCCTTGCTACAAAAGTGGGA
AACCAGCATTAGCAGAAGACACTGAGATCTGGTTCCTGGACAGAGCGTTATACTGGCATTCTTCTCACAGA
CACCTTTACTGCCTATTACCGCCTGCTCATCACCCACCTGGGCCTGCCCCAGTGGCAATATGCCTTACC
AGCTATGGCATTAGCCCACAGGCCAAGCAATGGTTCAGCATGTATAAACCTATCACCTACAACACAAACC
TGCTCACAGAAGAGACCGACTCCTTTGTGAATAAGCTAGATCCCAGCAAAGTGTTAAGAGCAAGAACAA
GATCGTAATCCCCAAAAGAAAGGGCCTGTGCAGCCTGCAGGTGGCCAGAAAAGGGCCCTCAGGACCCCTCC
GGTCCCTCCACTTCTCCACTTCAAATCCTCCTCTGGCTCTGAAAACCCACCCGGAAG

ACGCGTACGCGGCCGCTCGAGCAGAAACTCATCTCAGAAGAGGATCTGGCAGCAAATGATATCCTGGATT
ACAAGGATGACGACGATAAGGTTTAA



[View online »](#)

Protein Sequence: >RC220174 protein sequence
 Red=Cloning site Green=Tags(s)

MEEEASSPGLGCSKPHLEKLTLGITRILESSPGVTEVTIIIEKPPAERHMISSEWQKNNCVMPEDEVKNFYLM
 MTNGFHMTWSVKLDEHIIPLGSMAINSISKLTQLTQSSMYSLPNAPTLADLEDDTHEASDDQPEKPHFDS
 RSVIFELDSCNGSGKVKLVYKSGKPALAEDTEIWFLDRALYWHFLTDTFTAYYRLLITHLGLPQWQYAF
 SYGISPQAKQWFSMYKPIITYNTNLLTEETDSFVNKLDPSKVFKSKNKIVIPKKKGPVQPAGGQKGPSG
 GPSTSSTSKSSSGGNPTRK

TRTRPLEQKLISEEDLAANDILDYKDDDDKV

Chromatograms: https://cdn.origene.com/chromatograms/mk6455_e11.zip

Restriction Sites: SgfI-MluI

Cloning Scheme:

Cloning sites used for ORF Shuttling:



* The last codon before the Stop codon of the ORF

ACCN: NM_015476

ORF Size: 900 bp

OTI Disclaimer: The molecular sequence of this clone aligns with the gene accession number as a point of reference only. However, individual transcript sequences of the same gene can differ through naturally occurring variations (e.g. polymorphisms), each with its own valid existence. This clone is substantially in agreement with the reference, but a complete review of all prevailing variants is recommended prior to use. [More info](#)

OTI Annotation: This clone was engineered to express the complete ORF with an expression tag. Expression varies depending on the nature of the gene.

Components: The ORF clone is ion-exchange column purified and shipped in a 2D barcoded Matrix tube containing 10ug of transfection-ready, dried plasmid DNA (reconstitute with 100 ul of water).

Reconstitution Method:

1. Centrifuge at 5,000xg for 5min.
2. Carefully open the tube and add 100ul of sterile water to dissolve the DNA.
3. Close the tube and incubate for 10 minutes at room temperature.
4. Briefly vortex the tube and then do a quick spin (less than 5000xg) to concentrate the liquid at the bottom.
5. Store the suspended plasmid at -20°C. The DNA is stable for at least one year from date of shipping when stored at -20°C.

RefSeq: [NM_015476.2](#), [NP_056291.2](#)

RefSeq Size: 4068 bp

RefSeq ORF: 903 bp

Locus ID: 25941

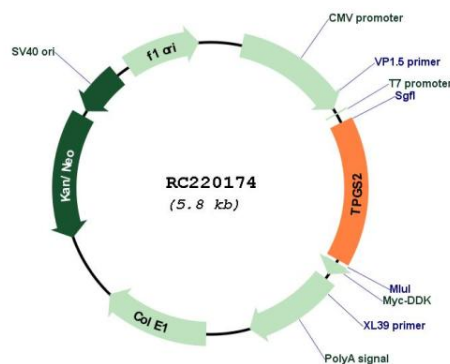
UniProt ID: [Q68CL5](#)

Cytogenetics: 18q12.2

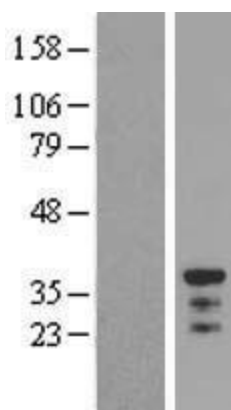
MW: 33.3 kDa

Gene Summary: This gene encodes a protein that is a component of the neuronal polyglutamylase complex, which plays a role in post-translational addition of glutamate residues to C-terminal tubulin tails. Alternatively spliced transcript variants encoding multiple isoforms have been observed for this gene. [provided by RefSeq, Dec 2012]

Product images:



Circular map for RC220174



Western blot validation of overexpression lysate (Cat# [LY414528]) using anti-DDK antibody (Cat# [TA50011-100]). Left: Cell lysates from untransfected HEK293T cells; Right: Cell lysates from HEK293T cells transfected with RC220174 using transfection reagent MegaTran 2.0 (Cat# [TT210002]).