

Product datasheet for **RC220168**

ARHGAP8 (NM_001017526) Human Tagged ORF Clone

Product data:

Product Type:	Expression Plasmids
Product Name:	ARHGAP8 (NM_001017526) Human Tagged ORF Clone
Tag:	Myc-DDK
Symbol:	ARHGAP8
Synonyms:	BPGAP1; PP610
Mammalian Cell Selection:	Neomycin
Vector:	pCMV6-Entry (PS100001)
E. coli Selection:	Kanamycin (25 ug/mL)



[View online »](#)

ORF Nucleotide Sequence:

>RC220168 representing NM_001017526
 Red=Cloning site Blue=ORF Green=Tags(s)

TTTTGTAATACGACTCACTATAGGGCGGCCGGAATTCGTCGACTGGATCCGGTACCGAGGAGATCTGCC
 GCC**CGGATCGCC**

ATGGCTGGCCAGGATCCTGCGCTGAGCAGGAGTACCCCGTTCTACGACGTGGCCAGACATGGCATTCTGC
 AGGTGGCAGGGGATGACCGCTTTGGAAGACGTGTTGTCACGTTACAGCTGCTGCCGATGCCACCCTCCCA
 CGAGCTGGACCACCAGCGGCTGCTGGAGTATTTGAAGTACACACTGGACCAATACGTTGAGAACGATTAT
 ACCATCGTCTATTTCCACTACGGGCTGAACAGCCGGAACAAGCCTTCCCTGGGCTGGCTCCAGAGCGCAT
 ACAAGGAGTTCGATAGGAAAGACGGGGATCTCACTATGTGGCCAGGCTGGTCTCGAACTCCAAGCTCAA
 GCGATCTCCACCTCAGCCTCCAAAGTACTGGGATTACAGGTACAAGAAGAACTTGAAGGCCCTCTAC
 GTGGTGCACCCACCAGCTTCATCAAGGTCTGTGGAACATCTTGAAGCCCCTCATCAGTACAAGTTG
 GGAAGAAAGTCACTATTTCAACTACCTGAGTGAAGTCCAGAACACCTTAAATACGACCAGCTGGTCA
 CCCTCCCGAAGTTTTCGGTACGATGAGAAGTCCAGAGCCTGCACGAGGCGCGGACGCCCTCCACC
 AAGACACCACCGCGCGGCCCGCTGCCACACAGCAGTTTGGCGTCAGTCTGCAATACCTCAAAGACA
 AAAATCAAGGCGAACTATCCCCCTGTGCTGAGGTTACAGTGACGTACCTGAGAGAGAAAGGCCCTGCG
 CACCGAGGGCCTGTTCCGGAGATCCGCCAGCGTGCAGACCGTCCGCGAGATCCAGAGGCTCTACAACAA
 GGAAGCCCGTGAACCTTACGACTACGGGGACATTACATCCCTGCCGTGATCTGAAGACCTTCTGCG
 GAGAGTGCACCCAGCGCTTCTGACCTCCAGGCTACGAGCAGATTCTCGGGATCACCTGTGTGGAGAG
 CAGCCTGCGTGTCACTGGCTGCCCCAGATCTTACGGAGCCTCCAGAGCACAACTACGTCGTCTCCGC
 TACCTCATGGGCTTCTGCATGCGGTGTCCCGGAGAGCATCTTCAACAAAATGAACAGCTTAACTGG
 CCTGTGCTTTCGGGCTGAATTTGATCTGGCCATCCAGGGGCTCCTCCCTGAGTGCCTTGTGCCCT
 GAACATGTTCACTGAACTGCTGATCGAGTACTATGAAAAGATCTTACGACCCCGGAGGCACCTGGGGAG
 CACGGCCTGGCACCATGGGAACAGGGGAGCAGGGCAGCCCTTTCAGGAGGCTGTGCCACGGACACAAG
 CCACGGGCTCACCAAGCTACCCTACCTCCGAGTCCCCTGATGGCAGCCAGAAGACGTCTC

ACGCGTACGCGGCCGCTCGAGCAGAACTCATCTCAGAAGAGGATCTGGCAGCAAATGATATCTGGATT
 ACAAGGATGACGACGATAAGGTTTAA

Protein Sequence:

>RC220168 representing NM_001017526
 Red=Cloning site Green=Tags(s)

MAGQDPALSTSHPFYDVARHGILQVAGDDRFGRVVTFSCRMPPSHELDHQRLLEYLKYTLDQYVENDY
 TIVYFHYGLNSRNKPSLQWLSAYKEFDRKDGDLTMWPRLVSNKLRSSHLSLPKYWDYRYKKNLKALY
 VVHPTSFYIKVLWNILKPLISHKFGKKVIYFNYLSELHEHLKYDQLVIPPEVLRDEKLQSLHEGRTPPPT
 KTFPPRPPLPTQQFGVSLQYLKDKNQGELIPPVLRFTVTVLREKGLRTEGLFRRSASVQTVREIQRLYNQ
 GKPVNFDDYGDIIHPIAVILKTFLELPPQLLTFQAYEQILGITCVESLRTGCRQILRSLPEHNYVVL
 YLMGFLHAVSRESIFNKMNSNLACVFLNLIWPSQGVSSLSALVPLNMFTELLIEYYEKIFSTPEAPGE
 HGLAPWEQGSRAAPLQEAVPRTQATGLTKPTLPPSPLMAARRRL

TRTRPLEQKLISEEDLAANDILDYKDDDDKV

Chromatograms:

https://cdn.origene.com/chromatograms/mk8019_h01.zip

Restriction Sites:

Sgfl-Mlul

Cloning Scheme:


ACCN: NM_001017526

ORF Size: 1392 bp

OTI Disclaimer: The molecular sequence of this clone aligns with the gene accession number as a point of reference only. However, individual transcript sequences of the same gene can differ through naturally occurring variations (e.g. polymorphisms), each with its own valid existence. This clone is substantially in agreement with the reference, but a complete review of all prevailing variants is recommended prior to use. [More info](#)

OTI Annotation: This clone was engineered to express the complete ORF with an expression tag. Expression varies depending on the nature of the gene.

Components: The ORF clone is ion-exchange column purified and shipped in a 2D barcoded Matrix tube containing 10ug of transfection-ready, dried plasmid DNA (reconstitute with 100 ul of water).

Reconstitution Method:

1. Centrifuge at 5,000xg for 5min.
2. Carefully open the tube and add 100ul of sterile water to dissolve the DNA.
3. Close the tube and incubate for 10 minutes at room temperature.
4. Briefly vortex the tube and then do a quick spin (less than 5000xg) to concentrate the liquid at the bottom.
5. Store the suspended plasmid at -20°C. The DNA is stable for at least one year from date of shipping when stored at -20°C.

RefSeq: [NM_001017526.1](#), [NP_001017526.1](#)

RefSeq Size: 1725 bp

RefSeq ORF: 1395 bp

Locus ID: 23779

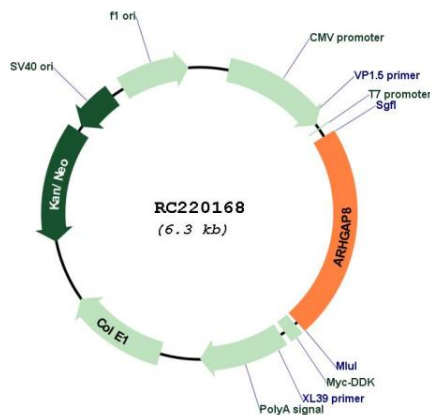
UniProt ID: [P85298](#)

Cytogenetics: 22q13.31

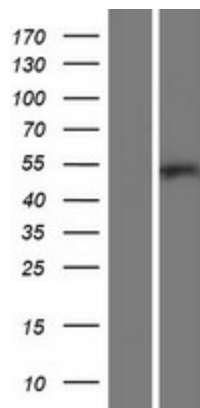
MW: 53.3 kDa

Gene Summary: This gene encodes a member of the RHOGAP family. GAP (GTPase-activating) family proteins participate in signaling pathways that regulate cell processes involved in cytoskeletal changes. GAP proteins alternate between an active (GTP-bound) and inactive (GDP-bound) state based on the GTP:GDP ratio in the cell. This family member is a multidomain protein that functions to promote Erk activation and cell motility. Alternative splicing results in multiple transcript variants. Read-through transcripts from the upstream proline rich 5, renal (PRR5) gene into this gene also exist, which led to the original description of PRR5 and ARHGAP8 being a single gene. [provided by RefSeq, Nov 2010]

Product images:



Circular map for RC220168



Western blot validation of overexpression lysate (Cat# [LY422740]) using anti-DDK antibody (Cat# [TA50011-100]). Left: Cell lysates from untransfected HEK293T cells; Right: Cell lysates from HEK293T cells transfected with RC220168 using transfection reagent MegaTran 2.0 (Cat# [TT210002]).