

Product datasheet for RC220163

Galectin 8 (LGALS8) (NM_201543) Human Tagged ORF Clone

Product data:

Product Type:	Expression Plasmids
Product Name:	Galectin 8 (LGALS8) (NM_201543) Human Tagged ORF Clone
Tag:	Myc-DDK
Symbol:	Galectin 8
Synonyms:	Gal-8; PCTA-1; PCTA1; Po66-CBP
Mammalian Cell Selection:	Neomycin
Vector:	pCMV6-Entry (PS100001)
E. coli Selection:	Kanamycin (25 ug/mL)
ORF Nucleotide Sequence:	>RC220163 ORF sequence Red=Cloning site Blue=ORF Green=Tags(s)

TTTTGTAATACGACTCACTATAGGGCGGCCGGAATTCGTCGACTGGATCCGGTACCGAGGAGATCTGCC
GCC**CGATCGCC**

ATGTTGTCCTTAAACAACCTACAGAATATCATCTATAACCCGGTAATCCCGTTTGTGGCACCATTCCCTG
ATCAGCTGGATCCTGGAACCTTGGATTGTGATACGTGGGCATGTTCCCTAGTGACGCAGACAGATTCCAGGT
GGATCTGCAGAAATGGCAGCAGCATGAAACCTCGAGCCGATGTGGCCTTTCATTTCAATCCTCGTTTCAA
AGGGCCGGCTGCATTGTTTGAATACTTTGATAAATGAAAAATGGGGACGGGAAGAGATCACCTATGACA
CGCCTTTCAAAAGAGAAAAGTCTTTTGGATCGTGATTATGGTGCTGAAGGACAAAATCCAGGTGGCTGT
AAATGGAAAACATACTCTGCTCTATGGCCACAGGATCGGCCAGAGAAAATAGACACTCTGGGCATTAT
GGCAAAGTGAATATTTCACTCAATTTGGTTTTAGCTTCAGCTCGGACTTACAAAGTACCCAAGCATCTAGTC
TGGAAGTACAGAGATAAGTAGAGAAAATGTTCCAAAGTCTGGCAGCCCCAGCTTAGGCTGCCATTCGC
TGCAAGTTGAACACCCCATGGGCCCTGGACGAAGTGTGCTCGTTAAAGGAGAAGTGAATGCAAAATGCC
AAAAGCTTTAATGTTGACCTACTAGCAGGAAAATCAAAGGATATTGCTCTACACTGAACCCACGGCTGA
ATATTAAGCATTGTGAAGAAATCTTTCTTCAGGAGTCTGGGAGAAGAAGAGAGAAATATTACCTC
TTTCCATTTAGTCTGGGATGTACTTTGAGATGATAATTTATTGTGATGTTAGAGAATTAAGGTTGCA
GTAATGGCGTACACAGCCTGGAGTACAACACAGATTTAAAGAGCTCAGCAGTATTGACACGCTGGAAA
TTAATGGAGACATCCACTTACTGGAAGTAAGGAGCTGG

ACGCGTACGCGGCCGCTCGAGCAGAAACTCATCTCAGAAGAGGATCTGGCAGCAAATGATATCCTGGATT
ACAAGGATGACGACGATAAGGTTTAA



[View online »](#)

Protein Sequence: >RC220163 protein sequence
Red=Cloning site Green=Tags(s)

MLSLNNLQNIYNPVIVPFVGTIPDQLDPGTLIVIRGHVPSDADRFQVDLQNGSSMKPRADVAFHFNPRFK
 RAGCIVCNTLINEKWGREEITYDTPFKREKSFEIVIMVLKDKFQVAVNGKHTLLYGHRIQPEKIDTLGIY
 GKVNIHSIGFSFSSDLQSTQASSLELTEISRNVPKSGTPQLRLPFAARLNTMPGPGRTVVVKGEVNANA
 KSFNVDLLAGKSKDIALHLNPRLNIAKAFVRNSFLQESWGEEERNITSPFPSPGMYFEMIIYCDVREFKVA
 VNGVHSLEYKHRFKELSSIDTLEINGDIHLLEVRSW

TRTRPLEQKLISEEDLAANDILDYKDDDDKV

Chromatograms: https://cdn.origene.com/chromatograms/mk6310_e03.zip

Restriction Sites: SgfI-MluI

Cloning Scheme:



ACCN: NM_201543

ORF Size: 948 bp

OTI Disclaimer: The molecular sequence of this clone aligns with the gene accession number as a point of reference only. However, individual transcript sequences of the same gene can differ through naturally occurring variations (e.g. polymorphisms), each with its own valid existence. This clone is substantially in agreement with the reference, but a complete review of all prevailing variants is recommended prior to use. [More info](#)

OTI Annotation: This clone was engineered to express the complete ORF with an expression tag. Expression varies depending on the nature of the gene.

Components: The ORF clone is ion-exchange column purified and shipped in a 2D barcoded Matrix tube containing 10ug of transfection-ready, dried plasmid DNA (reconstitute with 100 ul of water).

Reconstitution Method:

1. Centrifuge at 5,000xg for 5min.
2. Carefully open the tube and add 100ul of sterile water to dissolve the DNA.
3. Close the tube and incubate for 10 minutes at room temperature.
4. Briefly vortex the tube and then do a quick spin (less than 5000xg) to concentrate the liquid at the bottom.
5. Store the suspended plasmid at -20°C. The DNA is stable for at least one year from date of shipping when stored at -20°C.

RefSeq: [NM_201543.3](#)

RefSeq Size: 6155 bp

RefSeq ORF: 954 bp

Locus ID: 3964

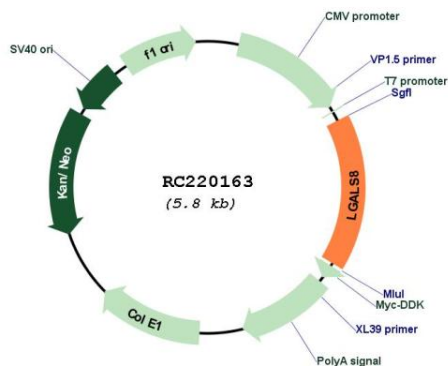
UniProt ID: [O00214](#)

Cytogenetics: 1q43

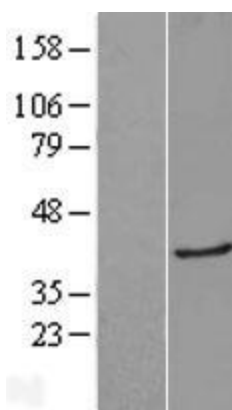
MW: 35.7 kDa

Gene Summary: This gene encodes a member of the galectin family. Galectins are beta-galactoside-binding animal lectins with conserved carbohydrate recognition domains. The galectins have been implicated in many essential functions including development, differentiation, cell-cell adhesion, cell-matrix interaction, growth regulation, apoptosis, and RNA splicing. This gene is widely expressed in tumoral tissues and seems to be involved in integrin-like cell interactions. Alternatively spliced transcript variants encoding different isoforms have been identified. [provided by RefSeq, Jul 2008]

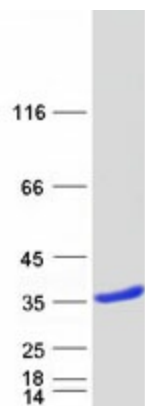
Product images:



Circular map for RC220163



Western blot validation of overexpression lysate (Cat# [LY404450]) using anti-DDK antibody (Cat# [TA50011-100]). Left: Cell lysates from untransfected HEK293T cells; Right: Cell lysates from HEK293T cells transfected with RC220163 using transfection reagent MegaTran 2.0 (Cat# [TT210002]).



Coomassie blue staining of purified LGALS8 protein (Cat# [TP320163]). The protein was produced from HEK293T cells transfected with LGALS8 cDNA clone (Cat# RC220163) using MegaTran 2.0 (Cat# [TT210002]).