

Product datasheet for RC220162

TMEPAI (PMEPA1) (NM_199170) Human Tagged ORF Clone

Product data:

Product Type: Expression Plasmids
Product Name: TMEPAI (PMEPA1) (NM_199170) Human Tagged ORF Clone
Tag: Myc-DDK
Symbol: TMEPAI
Synonyms: STAG1; TMEPAI
Mammalian Cell Selection: Neomycin
Vector: pCMV6-Entry (PS100001)
E. coli Selection: Kanamycin (25 ug/mL)
ORF Nucleotide Sequence: >RC220162 representing NM_199170
 Red=Cloning site Blue=ORF Green=Tags(s)

TTTTGTAATACGACTCACTATAGGGCGGCCGGAATTCGTCGACTGGATCCGGTACCGAGGAGATCTGCC
 GCCCGGATCGCC

ATGATGGTGATGGTGGTGGTGCATCGTGCCTGCTGAGCCACTACAAGCTGTCTGCACGGTCCTTCATCA
 GCCGGCACAGCCAGGGGCGGAGGAGAGAAGATGCCCTGTCCTCAGAAGGATGCCTGTGGCCCTCGGAGAG
 CACAGTGTGAGGCAACGGAATCCCAGAGCCGAGGTCTACGCCCCGCTCGGCCACCGACCGCCTGGCC
 GTGCCGCCCTTCGCCAGCGGGAGCGCTTCCACCGCTTCCAGCCACCTATCCGTACCTGCAGCAGGAGA
 TCGACCTGCCGCCACCATCTCGCTGTGACGCGGGAGGAGCCCCACCCTACCAGGGCCCTGCACCCT
 CCAGTTCGGGACCCCGAGCAGCAGCTGGAAGTGAACCGGGAGTGGTGCAGCAGCCCCAACAGAAC
 ATCTTCGACAGTGACCTGATGGATAGTGCAGGCTGGGCGGCCCTGCCCGCCAGCAGTAACTCGGGCA
 TCAGCGCCACGTGCTACGGCAGCGGGCGCATGGAGGGCCCGCCACCTACAGCGAGGTCATCGG
 CCACTACCGGGGTCCTCCTTCCAGCACCAGCAGAGCAGTGGGCCGCCCTCCTTGCTGGAGGGGACCCGG
 CTCCACCACACACATCGCGCCCTAGAGAGCGCAGCCATCTGGAGCAAAGAGAAGGATAAACAGAAAG
 GACACCCTCTC

ACGCGTACGCGGCCGCTCGAGCAGAACTCATCTCAGAAGAGGATCTGGCAGCAAATGATATCCTGGATT
 ACAAGGATGACGACGATAAGGTTTAA



[View online »](#)

Protein Sequence: >RC220162 representing NM_199170
Red=Cloning site Green=Tags(s)

MMVMVVVITCLLSHYKLSARSFISRHSQGRREDALSSEGCLWPSESTVSGNGIPEPQVYAPRPTDRLA
 VPPFAQRERFHRFQPTYPLQHEIDLPTISLSDGEEPPPYQGPCTLQLRDEPQQLELNRESVRAPPNRT
 IFDSDLMSARLGGPCPPSSNSGISATCYGSGGRMEGPPPTYSEVIGHYPGSSFQHQSSGPPSLLEGTR
 LHHTHIAPLESAAIWSKEKDKQKGHPL

TRTRPLEQKLISEEDLAANDILDYKDDDDKV

Chromatograms: https://cdn.origene.com/chromatograms/mk6453_e03.zip

Restriction Sites: SgfI-MluI

Cloning Scheme:

Cloning sites used for ORF Shuttling:



* The last codon before the Stop codon of the ORF

ACCN: NM_199170

ORF Size: 711 bp

OTI Disclaimer: The molecular sequence of this clone aligns with the gene accession number as a point of reference only. However, individual transcript sequences of the same gene can differ through naturally occurring variations (e.g. polymorphisms), each with its own valid existence. This clone is substantially in agreement with the reference, but a complete review of all prevailing variants is recommended prior to use. [More info](#)

OTI Annotation: This clone was engineered to express the complete ORF with an expression tag. Expression varies depending on the nature of the gene.

Components: The ORF clone is ion-exchange column purified and shipped in a 2D barcoded Matrix tube containing 10ug of transfection-ready, dried plasmid DNA (reconstitute with 100 ul of water).

Reconstitution Method:

1. Centrifuge at 5,000xg for 5min.
2. Carefully open the tube and add 100ul of sterile water to dissolve the DNA.
3. Close the tube and incubate for 10 minutes at room temperature.
4. Briefly vortex the tube and then do a quick spin (less than 5000xg) to concentrate the liquid at the bottom.
5. Store the suspended plasmid at -20°C. The DNA is stable for at least one year from date of shipping when stored at -20°C.

Note: Plasmids are not sterile. For experiments where strict sterility is required, filtration with 0.22um filter is required.

RefSeq: [NM_199170.3](#)

RefSeq Size: 4531 bp

RefSeq ORF: 714 bp

Locus ID: 56937

UniProt ID: [Q969W9](#)

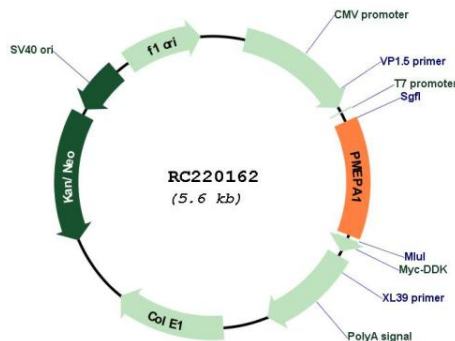
Cytogenetics: 20q13.31

Protein Families: Druggable Genome, Transmembrane

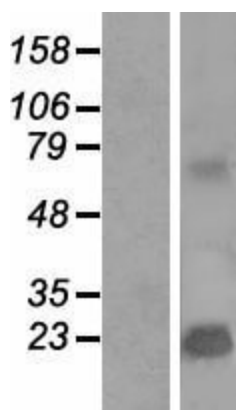
MW: 26 kDa

Gene Summary: This gene encodes a transmembrane protein that contains a Smad interacting motif (SIM). Expression of this gene is induced by androgens and transforming growth factor beta, and the encoded protein suppresses the androgen receptor and transforming growth factor beta signaling pathways through interactions with Smad proteins. Overexpression of this gene may play a role in multiple types of cancer. Alternatively spliced transcript variants encoding multiple isoforms have been observed for this gene. [provided by RefSeq, Dec 2011]

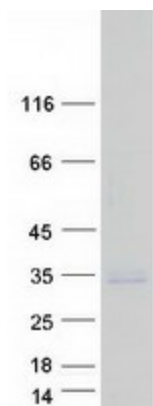
Product images:



Circular map for RC220162



Western blot validation of overexpression lysate (Cat# [LY404671]) using anti-DDK antibody (Cat# [TA50011-100]). Left: Cell lysates from untransfected HEK293T cells; Right: Cell lysates from HEK293T cells transfected with RC220162 using transfection reagent MegaTran 2.0 (Cat# [TT210002]).



Coomassie blue staining of purified PMEPA1 protein (Cat# [TP320162]). The protein was produced from HEK293T cells transfected with PMEPA1 cDNA clone (Cat# RC220162) using MegaTran 2.0 (Cat# [TT210002]).