

Product datasheet for **RC220159**

ADCK2 (NM_052853) Human Tagged ORF Clone

Product data:

Product Type:	Expression Plasmids
Product Name:	ADCK2 (NM_052853) Human Tagged ORF Clone
Tag:	Myc-DDK
Symbol:	ADCK2
Synonyms:	AARF
Mammalian Cell Selection:	Neomycin
Vector:	pCMV6-Entry (PS100001)
E. coli Selection:	Kanamycin (25 ug/mL)



[View online »](#)

ORF Nucleotide Sequence:

>RC220159 representing NM_052853
 Red=Cloning site Blue=ORF Green=Tags(s)

TTTTGTAATACGACTCACTATAGGGCGGCCGGAATTCGTCGACTGGATCCGGTACCGAGGAGATCTGCC
 GCC**GCGATCGCC**

ATGGTGGCGCCCTGGCGCTCTCCGTCAGGGTTTGCCTGTCGCACCTGAGGTGCTTCGAGCTCAGACAGG
 GACTCAGCCTCCTGAGGCCCTCCGAGTGCCTCGCGATGCCAGGCTCTGCTGGCTTCGCTGGGCACCTT
 GCCCAAGGTCGTCTCCCTGTGCGGGGACGTGGGTGAGGGGGCCCTGACGTTCTGAGTCGGCGAAGGGTC
 CGCTGCAGCGGGGCGGCTGGCGGGGGCCCGGGAGAGCCTCCCCGAGCGGGACCTCTGGCGCGCTCT
 TCCTGCATCTCCGCTCTGGCTTCGCGCCGGCGCTCTGTTGGTAAATCTTCCCCTCTACTCTCTA
 CCCCTCACCTACCTGGTCCCAGCGTCTCCACCCTCTGGCTCCACCTGCTTCTGAAAGCCACCGAGACC
 TCAGGCCAACCTACATCAAACCTGGCCAGTGGCCAGCACCCGGCGGATCTGTTTTCGGAGGCTTTCT
 GTGCCAATTTTCAAGCTGCATGTCGAGTGACCCCCACCCGTGGACTCACACTGAGCGCTTCCCTTCG
 GCAGGCTTTTGGGATGACTGGGGGAGCATCCTCTTTTTGAGAACGGGAACCTGTGGGCTCAGGCTGC
 GTGGCCACAGTGTACAAAGCATACGCCAACACTGCCTTCCTGGAGACTGACAGCTCCAGAGACTTGGCA
 GGGCTCCTGTCTGCCGCCCTTCTCACATACTGGGCGAGTCGGTGGGCTGAGAGACTCTTTGGATACCT
 TGGAAATGGCCGAAACCTCCAGAAAATCTCGCAGACCAGTCTTTCTAGAAAGGCTGCTCCTCCCTAAA
 GCTGACCTGGTTGGATCAAATGCAGGGGTGCTCGGGCTCAGGTCCTGGCCACCAACCTGAGGCCACCA
 ACCTCATCTCCGTGGCAGTGAAGTGTTCACCCTGGCTGCTCGCTCAGGTGCATATGGACCTGCTGCT
 GATGAAGATTGGCAGCCGAGTCTGGGAGTTTTGCCAGGCATCAAGTGGCTTAGCTTGCTGAGATTGTG
 GAGGAATTTGAGAAGCTGATGGTCCAACAGATTGACCTGCGTTACGAAGCTCAGAATCTAGAACACTTCC
 AGGTCAACTTCCGGAATGTGAAAGCCGTCAGTTCCCCACCCCTCTGCGCCCTTTGTACCAGAGAAGT
 CTTGGTGGAAACGTATGAAGAGAGTGTGCTGTGTCCAGTTACCAGCAGGCAGGAATCCCGTGGACTTG
 AAAAGGAAGATTGCACGGCTGGGATCAACATGCTCCTGAAGATGATATTTGTTGATAACTTTGTCCATG
 CAGACCTTACCCTGAAACATCCTGGTTCAGGGTGCCAACGGCCTGCTCCTCGAGTCAGGAGGCGCAGCT
 GCAGCAGGCGGACATCTGTGACTCTGGTGGTGGCCGTGCCATCTTCCCTCTGCCCGCTGCGACTGGT
 CTGCTGGATGCTGGCATTGTGGCGGAGCTGCAGGCCCTGACCTGAGGAATTTCCGGCAGTTTTTCATGG
 CTGTTGGTATGGGCGAGGCCAGAGAGTGGCTGAGCTGATCCTGCATCATGCCCGGCCAGCGAGTGCAG
 GGACGTGGAGGGTTCAAACCGAGATGGCCATGCTGGTACCAGGCCAGGAAGAACACCATCACCTG
 GAGAAGCTTCATGTGTCCAGCCTTCTCTAGTGTCTTAAAGTTGCTGATGACTACAAGTAAAGCTTG
 AGAGCAACTTTGCTCCATTGTGTTTGCCATCATGGTGTGGAGGGGCTTGGCCGCTCACTGGACCCCAA
 ACTGGACATCCTGGAGGCAGCGAGGCCCTTCTCCTCACGGGCCAGTGTGCCCCCG

ACGCGTACGCGGCCGCTCGAGCAGAACTCATCTCAGAAGAGGATCTGGCAGCAAATGATATCCTGGATT
 ACAAGGATGACGACGATAAGGTTTAA

Protein Sequence:

>RC220159 representing NM_052853
 Red=Cloning site Green=Tags(s)

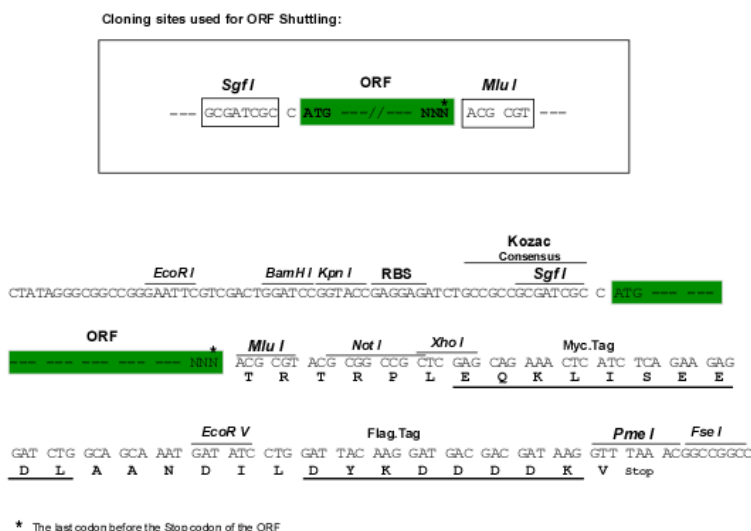
MVAPWRVSVRVCLSHLRCFELRQGLSLLRPSECPDARLCWLLLGTLPKVVSLCGDVGEGAPDVL SRRRV
 RCSGAAGAGPAESLPRAGPLGGVFLHLRLWLRAGALLVKFFPLLLLYPLTYLAPSVSTLWLHLLKATET
 SGPTYIKLGQWASTRRDLFSEAFCAQF SKLHVRVTPHPWHTERFLRQAFGDDWGSILSFENREPVGSGC
 VAQVYKAYANTAFLETDSVQRLGRASCLPPFSHTGAVGGLRELFYLGNGRKPENLADQSFLERLLLPK
 ADLVGSNAGVSRAQVPGHQPEATNLISVAVKVLHPGLLAQVHMDLLLMKIGSRVLGVLPGIKWLSLPEIV
 EEFKLMVQQIDLRYEANLEHFQVNFVHADLHPGNILVQGANGLSSSQEAQLQQADICDITLVVAVPSSLCPRLV
 LLDAGIVAELQAPDLRNFRAVFMVVMGQQRVAELILHHARASECRDVEGFKTEMAMLVQARKNTITL
 EKLHVSSLLSSVFKLLMTHKVKLESNFASIVFAIMVLEGLGRSLDPKLDILEAARPFLLTGPVCP

TRTRPLEQKLI SEEDLAANDILDYKDDDDKV

Chromatograms: https://cdn.origene.com/chromatograms/mk6105_h02.zip

Restriction Sites: SgfI-MluI

Cloning Scheme:



ACCN: NM_052853

ORF Size: 1878 bp

OTI Disclaimer: The molecular sequence of this clone aligns with the gene accession number as a point of reference only. However, individual transcript sequences of the same gene can differ through naturally occurring variations (e.g. polymorphisms), each with its own valid existence. This clone is substantially in agreement with the reference, but a complete review of all prevailing variants is recommended prior to use. [More info](#)

OTI Annotation: This clone was engineered to express the complete ORF with an expression tag. Expression varies depending on the nature of the gene.

Components: The ORF clone is ion-exchange column purified and shipped in a 2D barcoded Matrix tube containing 10ug of transfection-ready, dried plasmid DNA (reconstitute with 100 ul of water).

Reconstitution Method:

1. Centrifuge at 5,000xg for 5min.
2. Carefully open the tube and add 100ul of sterile water to dissolve the DNA.
3. Close the tube and incubate for 10 minutes at room temperature.
4. Briefly vortex the tube and then do a quick spin (less than 5000xg) to concentrate the liquid at the bottom.
5. Store the suspended plasmid at -20°C. The DNA is stable for at least one year from date of shipping when stored at -20°C.

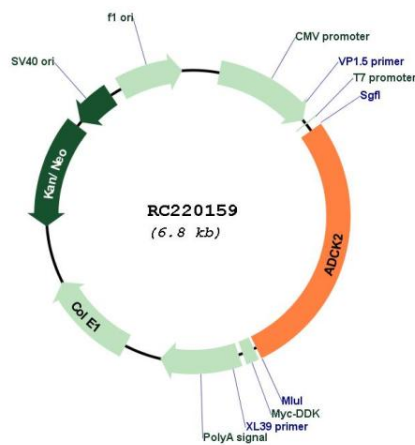
RefSeq: [NM_052853.4](#)

RefSeq Size: 2376 bp

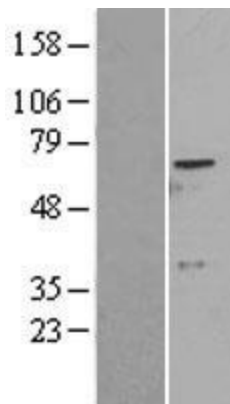
RefSeq ORF: 1881 bp

Locus ID:	90956
UniProt ID:	Q7Z695
Cytogenetics:	7q34
Domains:	ABC1
Protein Families:	Druggable Genome, Protein Kinase
MW:	68.8 kDa
Gene Summary:	The function of this protein is not yet clear. It is not known if it has protein kinase activity and what type of substrate it would phosphorylate (Ser, Thr or Tyr).[UniProtKB/Swiss-Prot Function]

Product images:



Circular map for RC220159



Western blot validation of overexpression lysate (Cat# [LY403259]) using anti-DDK antibody (Cat# [TA50011-100]). Left: Cell lysates from untransfected HEK293T cells; Right: Cell lysates from HEK293T cells transfected with RC220159 using transfection reagent MegaTran 2.0 (Cat# [TT210002]).