

Product datasheet for RC220158

Kallikrein 12 (KLK12) (NM_019598) Human Tagged ORF Clone

Product data:

Product Type:	Expression Plasmids
Product Name:	Kallikrein 12 (KLK12) (NM_019598) Human Tagged ORF Clone
Tag:	Myc-DDK
Symbol:	Kallikrein 12
Synonyms:	KLK-L5; KLKL5
Mammalian Cell Selection:	Neomycin
Vector:	pCMV6-Entry (PS100001)
E. coli Selection:	Kanamycin (25 ug/mL)
ORF Nucleotide Sequence:	>RC220158 representing NM_019598 Red=Cloning site Blue=ORF Green=Tags(s)

TTTTGTAATACGACTCACTATAGGGCGCCGGAATTCGTCGACTGGATCCGGTACCGAGGAGATCTGCC
GCC**CGATCGCC**

ATGGGGCTCAGCATCTTTTTGCTCCTGTGTGTTCTTGGGCTCAGCCAGGCAGCCACACCGAAGATTTTCA
ATGGCACTGAGTGTGGGCGTAACTCACAGCCGTGGCAGGTGGGGCTGTTTGAGGGCACCAGCCTGCGCTG
CGGGGGTGTCTTATTGACCACAGGTGGGTCTCACAGCGGCTCACTGCAGCGGCAGCAGGTACTGGGTG
CGCCTGGGGAAACACAGCCTCAGCCAGCTCGACTGGACCGAGCAGATCCGGCACAGCGGCTTCTCTGTGA
CCCATCCCGGCTACCTGGGAGCCTCGACAGCCACGAGCAGACCTCCGGCTGCTGCGGCTGCGCCTGCC
CGTCCGGTAACAGCAGCGTTCAACCCCTGCCCTGCCCAATGACTGTGCAACCGCTGGCACCGAGTGC
CAGTCTCAGGCTGGGGATCACCAACCACCCACGGAACCCATCCCGGATCTGTCCAGTGCCTCAACC
TCTCCATCGTCTCCATGCCACCTGCCATGGTGTGTATCCCGGAGAATCACGAGCAACATGGTGTGTGC
AGGCGGCTCCCGGGCAGGATGCCTGCCAGGGTATTCTGGGGCCCCCTGGTGTGTGGGGGAGTCCCT
CAAGGTCTGGTCTCTGGGGTCTGTGGGGCCCTGTGGACAAGATGGCATCCCTGGAGTCTACACCTATA
TTTGAACCTCACTCTTGTGGCCTGGGAACCTTGGAACTTAACTCCTGCCAGCCCTC

ACGCGTACGCGGCCGCTCGAGCAGAACTCATCTCAGAAGAGGATCTGGCAGCAAATGATATCCTGGATT
ACAAGGATGACGACGATAAGGTTTAA



[View online »](#)

Protein Sequence: >RC220158 representing NM_019598
Red=Cloning site Green=Tags(s)

MGLSIFLLL CVLGLSQAATPKIFNGTECGRNSQPWQVGLFEGTSLRCGGVLIDHRWVLTAAHCSGSRYWV
 RLGEHLSQLDWTEQIRHSGFSVTHPGYLGASTSHEHDLRLRLPVRVTSSVQPLPLPNDCATAGTEC
 HVSGWGITNHPRNPFDDLQCLNL SIVSHATCHGVYPGRITSNMVCAGGVPGQDACQGDSSGGLVCGGVV
 QGLVSWGSGVPCGQDGI PGVYTYICNSTLVGLGTSWNFNSCQPF

TRTRPLEQKLISEEDLAANDILDYKDDDDKV

Chromatograms: https://cdn.origene.com/chromatograms/mg2847_f01.zip

Restriction Sites: SgfI-MluI

Cloning Scheme:

Cloning sites used for ORF Shuttling:



* The last codon before the Stop codon of the ORF

ACCN: NM_019598

ORF Size: 762 bp

OTI Disclaimer: The molecular sequence of this clone aligns with the gene accession number as a point of reference only. However, individual transcript sequences of the same gene can differ through naturally occurring variations (e.g. polymorphisms), each with its own valid existence. This clone is substantially in agreement with the reference, but a complete review of all prevailing variants is recommended prior to use. [More info](#)

OTI Annotation: This clone was engineered to express the complete ORF with an expression tag. Expression varies depending on the nature of the gene.

Components: The ORF clone is ion-exchange column purified and shipped in a 2D barcoded Matrix tube containing 10ug of transfection-ready, dried plasmid DNA (reconstitute with 100 ul of water).

Reconstitution Method:

1. Centrifuge at 5,000xg for 5min.
2. Carefully open the tube and add 100ul of sterile water to dissolve the DNA.
3. Close the tube and incubate for 10 minutes at room temperature.
4. Briefly vortex the tube and then do a quick spin (less than 5000xg) to concentrate the liquid at the bottom.
5. Store the suspended plasmid at -20°C. The DNA is stable for at least one year from date of shipping when stored at -20°C.

RefSeq: [NM_019598.3](#)

RefSeq Size: 945 bp

RefSeq ORF: 765 bp

Locus ID: 43849

UniProt ID: [Q9UKR0](#)

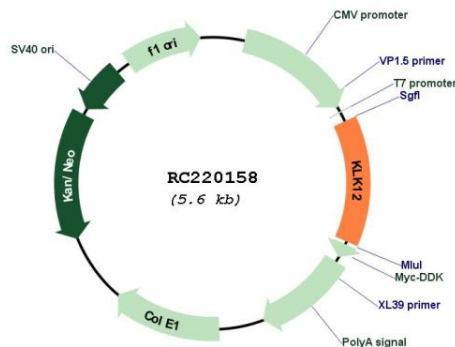
Cytogenetics: 19q13.41

Protein Families: Druggable Genome, Protease, Secreted Protein

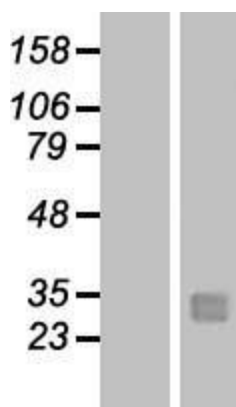
MW: 26.9 kDa

Gene Summary: Kallikreins are a subgroup of serine proteases having diverse physiological functions. Growing evidence suggests that many kallikreins are implicated in carcinogenesis and some have potential as novel cancer and other disease biomarkers. This gene is one of the fifteen kallikrein subfamily members located in a cluster on chromosome 19. Alternate splicing of this gene results in three transcript variants encoding different isoforms. [provided by RefSeq, Jul 2008]

Product images:



Circular map for RC220158



Western blot validation of overexpression lysate (Cat# [LY412725]) using anti-DDK antibody (Cat# [TA50011-100]). Left: Cell lysates from untransfected HEK293T cells; Right: Cell lysates from HEK293T cells transfected with RC220158 using transfection reagent MegaTran 2.0 (Cat# [TT210002]).