

Product datasheet for **RC220153**

GIT1 (NM_014030) Human Tagged ORF Clone

Product data:

Product Type:	Expression Plasmids
Product Name:	GIT1 (NM_014030) Human Tagged ORF Clone
Tag:	Myc-DDK
Symbol:	GIT1
Mammalian Cell Selection:	Neomycin
Vector:	pCMV6-Entry (PS100001)
E. coli Selection:	Kanamycin (25 ug/mL)



[View online »](#)

ORF Nucleotide Sequence:

>RC220153 representing NM_014030
 Red=Cloning site Blue=ORF Green=Tags(s)

TTTTGTAATACGACTCACTATAGGGCGGCCGGAATTCGTCGACTGGATCCGGTACCGAGGAGATCTGCC
 GCC**CGGATCGCC**

ATGTCCCGAAAGGGCCGCGAGCGGAGGTGTGTGCGGACTGCAGCGCCCCGGACCCTGGCTGGGCATCCA
TCAGCAGGGGTGTGCTGGTGTGTGACGAGTGTGCAGCGTGCACCGGAGCCTGGGACGCCACATCTCCAT
TGTCAAGCACCTTCGCCACAGCGCTGGCCTCCACGCTGCTGCAGATGGTGCACACGCTTGCCAGCAAC
GGGGCCAACTCCATCTGGGAGCACTCCCTGCTGGACCCCGCACAAAGTGCAGAGCGCCGCGTAAAGCCA
ACCCCCAAGACAAAGTCCACCCCATCAAGTCAGAGTTCATCAGGGCCAAGTACCAGATGCTGGCATTGT
GCACAAGCTTCCCTGCCGGGACGATGATGGAGTCACCGCCAAAGACCTCAGCAAGCAACTACACTCGAGC
GTGCGGACAGGCAACCTGGAGACATGTCTGCGCTGCTCTCCCTGGGTGCCAGGCCAACTTCTCCACC
CAGAGAAGGGCACCACACCTCTGCACGTGGCTGCCAAGGCAGGACAGACACTGCAGGCCGAGCTGCTTGT
AGTGTATGGGGTGACCCTGGCTCCCTGATGTTAATGGCCGCACACCCATTGACTATGCCAGGCAGGGC
GGGCACCATGAGCTGGCGAAAGCTGGTTGAGTGCCAATATGAGCTCACTGACCGGCTGGCCTTCTACC
TCTGTGGACGCAAGCCGATCACAAGAATGGGCATTACATCATCCACAGATGGCTGACAGCCTTGACTT
ATCCGAATTGGCCAAAGCTGCTAAGAAGAAGTGCAGGCGCTCAGCAACCGGCTTTTTGAGGAACTCGCC
ATGGACGTGATGACGAGGTGGATCGAAGAGAAAATGATGCAGTGTGGCTGGCTACCCAAAACCACAGCA
CTCTGGTGACAGAGCGCAGTGGCGTGGCCTTCTGCTGTTAACCCGGAATACTCAGCCACGCGGAATCA
GGGGCGACAAAAGCTGGCCCGCTTAAATGCCCGAGAGTTGCCACCTTGATCATCGACATTCTCAGTGAG
GCCAAGCGGAGACAGCAGGGCAAGAGCCTGAGCAGCCCCACAGACAACCTCGAGCTGTCTCTGCGGAGCC
AGAGTGACCTCGACGACCAACACGACTACGACAGCGTGGCCTCTGACGAGGACACAGACCAGGAGCCCT
CGCAGCACCGGCGCACTCGGAGCAACCGGGCCCGGAGCATGGACTCCTCGGACTTGTCTGACGGGCT
GTGACGCTGCAGGAGTACCTGGAGCTGAAGAAGGCCCTGGCTACATCGGAGGCAAAGGTGCAGCAGCTCA
TGAAGGTCAACAGTAGCCTGAGCGACGAGCTCCGGAGGCTGCAGCGAGAGATCCACAAGTGCAGGCGGA
GAACCTGCAGCTCCGGCAGCCTCCAGGGCCGGTGGCCACACCTCCACTCCCCAGTGAACGGGCGGAACAC
ACACCCATGGCGCCAGGCGGGAGCACACACCGCAGGGATCGCCAGGCCTTTCCATGATGAACCTGGCT
CTGCCCTGAAGCCCTTTGGGGCCCCCTGGGGACGAGCTCACTACGCGGCTGCAGCCTTCCACAGCAC
TGAGCTAGAGGACGACGCCATCTATTCAGTGCACGTCCCTGCTGGCCTTACCGGATCCGAAAAGGGGTG
TCTGCCTCAGCTGTGCCCTTCACTCCCTCCTCCCGCTGCTGTCTGCTCCAGGAGGGAAGCCGCCACA
CGAGCAAGCTTTCCCGCCACGGCAGTGGAGCCGACAGTACTATGAGAACACGCAAAGTGGGGACCCACT
GCTGGGGCTGGAAGGGAAGAGGTTTCTAGAGCTGGGCAAAGAGGAAGACTTCCACCCAGAGCTGGAAGC
CTGGATGGAGACCTAGATCCTGGGCTTCCAGCACAGAGGATGTCATCTTGAAGACAGAGCAGGTACCA
AGAACATTCAGGAACTGTTGCGGGCAGCCAGGAGTTCAAGCATGACAGCTTCGTGCCCTGCTCAGAGAA
GATCCATTTGGCTGTGACCGAGATGGCCTCCCTCTTCCCAAAGAGGCCAGCCCTGGAGCCAGTGGCGAGC
TCACTGCGGCTGCTCAACGCCAGCGCCTACCGCTGCAGAGTGAGTGCCGGAAGACAGTGCCCCCAGAGC
CCGGCGCCCCAGTGGACTTCCAGCTGCTGACTCAGCAGGTGATCCAGTGGCCTATGACATCGCCAAGGC
TGCCAAGCAGCTGGTACCATCACCAACCGAGAGAAGAAGCAG

ACGCGTACGCGGCCGCTCGAGCAGAAACTCATCTCAGAAGAGGATCTGGCAGCAAATGATATCCTGGATT
ACAAGGATGACGACGATAAGGTTTAA

Protein Sequence: >RC220153 representing NM_014030
 Red=Cloning site Green=Tags(s)

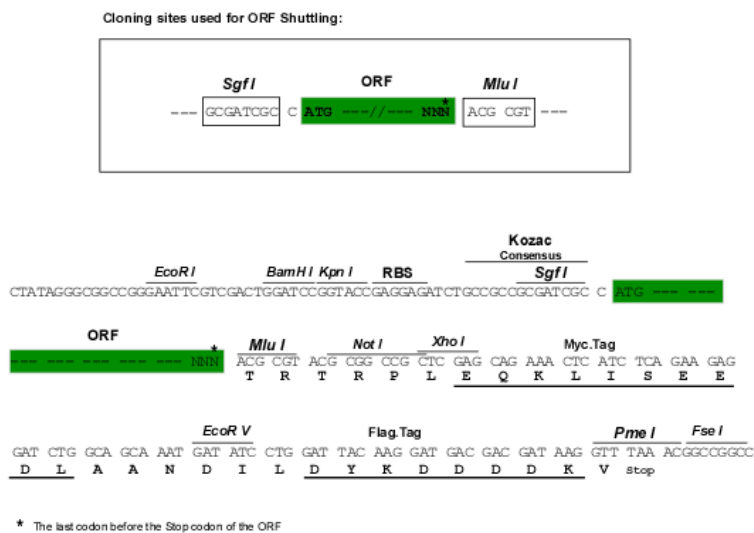
MSRKGPRAEVCADCSAPDPGWASISRGVLVCECCSVHRSLGRHISIVKHLRHSAPPTLLQMVHTLASN
 GANSIWEHSLLDPAQVQSGRRKANPQDKVHPKSEFIRAKYQMLAFVHKLPCRDDDGVTAKDLSKQLHSS
 VRTGNLETCLRLLSLGAQANFFHPEKGTTPLVHAAKAGQTLQAE LLVY GADPGSPDVNGRTPIDYARQA
 GHHELAERLVECYELTDRLAFYLCGRKPDHKNGHYIIPQMADSLDLSELAKAAKKLQALSNRLEELA
 MDVYDEVDRREDAVWLATQNHSTLVTERSAPVFLPVNPEYSATRNQGRQKLARFNAREFATLIIDILSE
 AKRRQQGKSLSSPTDNLELSRSQSDLDDQHDYDVSASDEDDTQEPLRSTGATRSNRARMSDSSDLSGVA
 VTLQEYLELKKALATSEAKVQQLMKVNSSLSDELRRLQREIHKLQAE NLQRQPPGPVPTPLPSERAEH
 TPMAPGGSTHRRDRQAFSMYEPGSALKPFGGPPGDEL TTRLQPFHSTELEDDAIYSVHVPAGLYRIRKGV
 SASAVPFTPSSPLLSCSQEGSRHTSKLSRHGSGADSDYENTQSGDPLLGLEGKRFLELGKEEDFHPELES
 LDGDLDPGLPSTEDVILKTEQVTKNIQELLRAAQEFKHDSFVPCSEKIHLAVTEMASLFPKRPALPEVRS
 SLRLLNASAYRLQSECRKTVPEPGAPVDFQLLTQQVIQCAYDIAKAAKQLVTITTREKKQ

TRTRPLEQKLI SEEDLAANDILDYKDDDDKV

Restriction Sites:

Sgfl-MluI

Cloning Scheme:



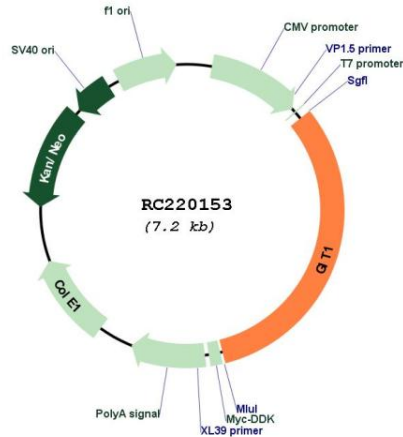
ACCN: NM_014030

ORF Size: 2283 bp

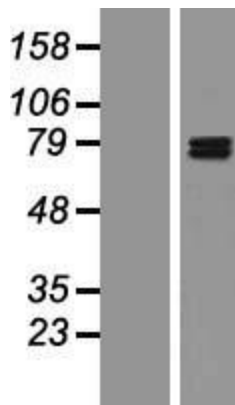
OTI Disclaimer:	<p>Due to the inherent nature of this plasmid, standard methods to replicate additional amounts of DNA in E. coli are highly likely to result in mutations and/or rearrangements. Therefore, OriGene does not guarantee the capability to replicate this plasmid DNA. Additional amounts of DNA can be purchased from OriGene with batch-specific, full-sequence verification at a reduced cost. Please contact our customer care team at custsupport@origene.com or by calling 301.340.3188 option 3 for pricing and delivery.</p> <p>The molecular sequence of this clone aligns with the gene accession number as a point of reference only. However, individual transcript sequences of the same gene can differ through naturally occurring variations (e.g. polymorphisms), each with its own valid existence. This clone is substantially in agreement with the reference, but a complete review of all prevailing variants is recommended prior to use. More info</p>
OTI Annotation:	<p>This clone was engineered to express the complete ORF with an expression tag. Expression varies depending on the nature of the gene.</p>
Components:	<p>The ORF clone is ion-exchange column purified and shipped in a 2D barcoded Matrix tube containing 10ug of transfection-ready, dried plasmid DNA (reconstitute with 100 ul of water).</p>
Reconstitution Method:	<ol style="list-style-type: none">1. Centrifuge at 5,000xg for 5min.2. Carefully open the tube and add 100ul of sterile water to dissolve the DNA.3. Close the tube and incubate for 10 minutes at room temperature.4. Briefly vortex the tube and then do a quick spin (less than 5000xg) to concentrate the liquid at the bottom.5. Store the suspended plasmid at -20°C. The DNA is stable for at least one year from date of shipping when stored at -20°C.
RefSeq:	NM_014030.4
RefSeq Size:	3758 bp
RefSeq ORF:	2286 bp
Locus ID:	28964
UniProt ID:	Q9Y2X7
Cytogenetics:	17q11.2
Domains:	ArfGap, ANK, GIT
Protein Families:	Druggable Genome
Protein Pathways:	Endocytosis, Epithelial cell signaling in Helicobacter pylori infection, Regulation of actin cytoskeleton
MW:	84.2 kDa

Gene Summary:

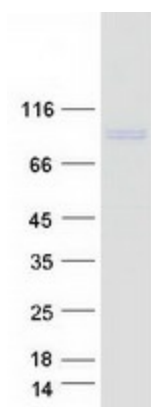
GTPase-activating protein for the ADP ribosylation factor family. May serve as a scaffold to bring together molecules to form signaling modules controlling vesicle trafficking, adhesion and cytoskeletal organization. Increases the speed of cell migration, as well as the size and rate of formation of protrusions, possibly by targeting PAK1 to adhesions and the leading edge of lamellipodia. Sequesters inactive non-tyrosine-phosphorylated paxillin in cytoplasmic complexes. Involved in the regulation of cytokinesis; the function may involve ENTR1 and PTPN13 (By similarity).[UniProtKB/Swiss-Prot Function]

Product images:


Circular map for RC220153



Western blot validation of overexpression lysate (Cat# [LY415510]) using anti-DDK antibody (Cat# [TA50011-100]). Left: Cell lysates from untransfected HEK293T cells; Right: Cell lysates from HEK293T cells transfected with RC220153 using transfection reagent MegaTran 2.0 (Cat# [TT210002]).



Coomassie blue staining of purified GIT1 protein (Cat# [TP320153]). The protein was produced from HEK293T cells transfected with GIT1 cDNA clone (Cat# RC220153) using MegaTran 2.0 (Cat# [TT210002]).