

Product datasheet for **RC220151**

KIAA1328 (NM_020776) Human Tagged ORF Clone

Product data:

Product Type:	Expression Plasmids
Product Name:	KIAA1328 (NM_020776) Human Tagged ORF Clone
Tag:	Myc-DDK
Symbol:	KIAA1328
Mammalian Cell Selection:	Neomycin
Vector:	pCMV6-Entry (PS100001)
E. coli Selection:	Kanamycin (25 ug/mL)



[View online »](#)

ORF Nucleotide Sequence:

>RC220151 representing NM_020776
 Red=Cloning site Blue=ORF Green=Tags(s)

TTTTGTAATACGACTCACTATAGGGCGGCCGGGAATTCGTCGACTGGATCCGGTACCGAGGAGATCTGCC
 GCC**CGCATCGCC**

ATGGCGGACGTGGCGGGCCCTCCCGCCCCAGTGCCTGGCGGTTCTGGAGCCGGACTTTTCTGATGAAG
 AACAAATCAGTAGTATACGTTCCAGGAATTTCTGCTGAAGGAAATGTCAGATCAAGACACAAGCTGATGAG
 TCCAAAAGCTGATGTTAACTTAAGACTTCCAGGGTGACTGATGCTTCAATCTCCATGGAGTCTTAAAA
 GGCACAGGAGATTAGTAGATGAACAGAAATTCCTGCAGGGGAGAAATAAAGAGTGCATCATTGAAGGATT
 TATGTCTTGAAGACAAAAGACGCATTGCAAACTTAATTAAGAAGTGGCCAGAGTAAGTGAGGAAAAGGA
 AGTGACAGAGGAAAGACTGAAAGCTGAGCAGGAGTCATTTGAGAAGAAGATCAGGCAGTTGGAAGAACAG
 AATGAACTGATCATCAAAGAAAGGAAGCTTTCAGCTACAGTATAGAGAATGCCAAGAAGTCTAAGCC
 TGTATCAGAAATATTTATCAGAACAACAGGAGAAGCTCACCATGTCTCTCTCAGAACTTGGTGTCTAG
 AATGCAGGAACAGCAGGTATCCAGTAGAAAAAGCACTCTCCAGTGTTCATCTGTGGAAGTGGATGGTTCC
 TACTTGAGCATAGCCAGACCACAGACCTACTATCAAACCAAGCAAAGACCTAAGTCTGCAGTCCAGGATT
 CAGCTTCAGAATCCCTTATAGCATTTAGGAATAATTTCTTGAACCAGTAACCTTCATCATCCCAAAGA
 TGATCTAGATAAGATACCATCAGAGACCACAACATGTAATTGTGAATCTCCAGGGAGAAAACCTGCAGTC
 CCAACAGAGAAAAAGCCACAAGAAGAAATGCACATGAAGGAATGTCCACATCTTAAGCCTACTCCTAGTC
 AATGCTGTGGTCATAGACTTGTGCAGATCGTGTTCATGACAGCCATCTACAAACATGACCCTCAACA
 TCCTAAGACACATCCAGAATCATGCAGTATTGTGGCTTTCTTGGGCATCTCTGGTGCATGGTGGTGGG
 GCACTGCAACCCATTGAACTTTGAAAAAGCAGATCTCAGAAGATAGAAAGCAGCAACTGATGCTTCAGA
 AAATGGAAGTGGAAATTTGAAAAGGAGCGCTTCCAGCATCTGCTGGCCAGCAGGAGACAAAGCTTCTCT
 AAAACAGCAGCAGCTTCCAGCTCTCGACTGGATTACAATTGTTTATTGAAGTCAAACCTGTGATGGCTGG
 CTGCTTGAACATCATCATCTATTAATAAGCACCAAGACCCCAACAGTGGAGAGAATAGGAAGGAGA
 GGAAGACAGTTGGGTTTTCATTTCGCATATGAAAGATGATGCCAGTGGTATGTCAAAGAAAGATACATG
 TAGACCCCAAAGAGGGACAGTGACAGGAGTTAGAAAAGATGCGTCTACATCTCCTATGCCAACAGGAAGC
 CTAAGGATTTTGTACCCACAGCCTCACCATCATTACAGCACACCACCTCCCGGTATGAGACATCTTTGT
 TGGATTTGGTTCAGTCTCTGAGCCAACTCTGCGCCAACTCAGCGCTATCCCTCCAGAGAAGCTGG
 GGCTTGGATCATGGTACTTTCCGACTCAGTCTCTAAAATCAACCCGGAAGAAGATGGGGATGCACAGA
 ACCCTGAAGAGTTGGAGGAGAATCAGATTCTGGAAGATATATTTTTCATT

ACGCGTACGCGGCCGCTCGAGCAGAACTCATCTCAGAAGAGGATCTGGCAGCAAATGATATCCTGGATT
 ACAAGGATGACGACGATAAGGTTTAA

Protein Sequence:

>RC220151 representing NM_020776
 Red=Cloning site Green=Tags(s)

MADVAGPSRPSAAAFWSRDFSDEEQSVVYVPGISAEGNVRSRHKLMSPKADVCLKTSRVTDASISMESLK
 GTGDSVDQNSCRGEIKSASLKDLCLEDKRRIANLIKELARVSEEKEVTEERLKAQESFEKKIRQLEEQ
 NELIIKEREALQLQYRECQELLSLYQKYLSEQQEKLTMSELGAARMQEQQVSSRKSTLQCSSVELDGS
 YLSIARPQTYQTKQRPKSAVQDSASESLIAFRNNSLKPVTLHHPKDDLKIPSETTTNCESPGRKPAV
 PTEKMPQEELHMKECPHLKPTPSQCCGHRLAADRVHDSHPTNMTPOHPKTHPESCSYCRLSWASLVHGGG
 ALQPIETLKKQISEDRKQQLMLQKMELEIEKERLQHLLAQQETKLLLKQQQLHQSRLDYNCLLKSNCBGW
 LLGTSSSIKKHQPPNSGENRKRKTVGFHSHMKDDAQWSCQKDKTCTCRPQRTVTGVRKDASTSPMPTGS
 LKDFVTTASPSLQHTTSRYETSLLDLVQSLSPNSAPKQRYPSREAGAWNHGTFRLSPLKSTRKKMGMR
 TPEELENQILEDIFFI

TRTRPLEQKLISEEDLAANDILDYKDDDDKV

Chromatograms:

https://cdn.origene.com/chromatograms/mk8020_e07.zip

Restriction Sites:

Sgfl-MluI

Cloning Scheme:

ACCN: NM_020776

ORF Size: 1731 bp

OTI Disclaimer: The molecular sequence of this clone aligns with the gene accession number as a point of reference only. However, individual transcript sequences of the same gene can differ through naturally occurring variations (e.g. polymorphisms), each with its own valid existence. This clone is substantially in agreement with the reference, but a complete review of all prevailing variants is recommended prior to use. [More info](#)

OTI Annotation: This clone was engineered to express the complete ORF with an expression tag. Expression varies depending on the nature of the gene.

Components: The ORF clone is ion-exchange column purified and shipped in a 2D barcoded Matrix tube containing 10ug of transfection-ready, dried plasmid DNA (reconstitute with 100 ul of water).

- Reconstitution Method:**
1. Centrifuge at 5,000xg for 5min.
 2. Carefully open the tube and add 100ul of sterile water to dissolve the DNA.
 3. Close the tube and incubate for 10 minutes at room temperature.
 4. Briefly vortex the tube and then do a quick spin (less than 5000xg) to concentrate the liquid at the bottom.
 5. Store the suspended plasmid at -20°C. The DNA is stable for at least one year from date of shipping when stored at -20°C.

RefSeq: [NM_020776.3](#)
RefSeq Size: 4875 bp

RefSeq ORF: 1734 bp

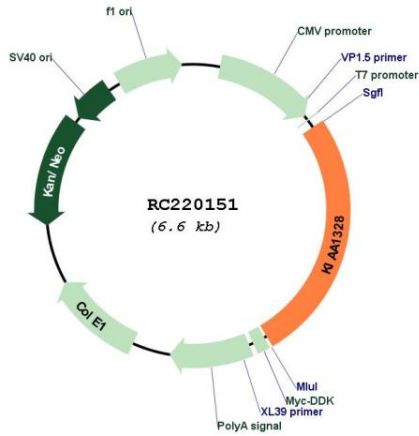
Locus ID: 57536

UniProt ID: [Q86T90](#)
Cytogenetics: 18q12.2

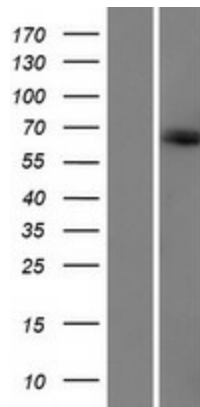
MW: 65.2 kDa

Gene Summary: Competes with SMC1 for binding to SMC3. May affect the availability of SMC3 to engage in the formation of multimeric protein complexes.[UniProtKB/Swiss-Prot Function]

Product images:



Circular map for RC220151



Western blot validation of overexpression lysate (Cat# [LY412331]) using anti-DDK antibody (Cat# [TA50011-100]). Left: Cell lysates from untransfected HEK293T cells; Right: Cell lysates from HEK293T cells transfected with RC220151 using transfection reagent MegaTran 2.0 (Cat# [TT210002]).