

## Product datasheet for **RC220139**

### **TBL1Y (NM\_033284) Human Tagged ORF Clone**

#### **Product data:**

|                           |  |
|---------------------------|--|
| Product Type:             | Expression Plasmids                      |
| Product Name:             | TBL1Y (NM_033284) Human Tagged ORF Clone |
| Tag:                      | Myc-DDK                                  |
| Symbol:                   | TBL1Y                                    |
| Synonyms:                 | DFNY2; TBL1                              |
| Mammalian Cell Selection: | Neomycin                                 |
| Vector:                   | pCMV6-Entry (PS100001)                   |
| E. coli Selection:        | Kanamycin (25 ug/mL)                     |



[View online »](#)

**ORF Nucleotide Sequence:**

>RC220139 ORF sequence  
 Red=Cloning site Blue=ORF Green=Tags(s)

TTTTGTAATACGACTCACTATAGGGCGGCCGGAATTCGTCGACTGGATCCGGTACCGAGGAGATCTGCC  
 GCC**CGGATCGCC**

ATGAGCATAACCACTGACGAGGTGAACCTTCTGGTTTATCGGTATCTCCAGGAGTCAGGTTTTCTCACT  
 CGGCTTTTACGTTTGGGATCGAGAGCCACATCAGCCAGTCCAACATCAATGGGACTAGTGCCACCGTC  
 TGCCCTCATCTCCATTCTCCAGAAGGGACTGCAGTATGTAGAGGCTGAGATAAGCATCAACAAGGATGGC  
 ACAGTGTTCGACAGCCGCCCTATAGAGTCCCTGTCCCTGATAGTTGCTGTGATTCTGATGTGGTGCAGA  
 TGCGGCAGCAGGCATTTGGAGAGAAGCTCACTCAGCAGCAAGCCAGTGCAGCAGCCACAGAGGCATCAGC  
 AATGGCAAAGGCGCAACCATGACCCAGCTGCTATTTCCAGCAAAAATCCTCCAAGAACCAGAGAGGCC  
 ACAGTGAACGGGGAAGAGAATGGAGCACATGAAATCAATAATCACTCAAAGCCAATGAAATAGATGGGG  
 ATGTTGAGATCCACCAACAAAGCCACAGTCTTCGGGGCCACGAGTCTGAGGTGTTTCATTTGTCCCTG  
 GAACCCTGTCAGTATTTGCTAGCCTCTGGATCTGGAGACTCAACTGCAAGGATATGGAACCTGAATGAG  
 AATAGCAAACGGGGCTCCACCCAGCTCGTGTGAGACATTGTATACGAGAAGGGGGCACGACTCCCAA  
 GTAATAAAGATGTCACCTCACTGGACTGGAACAGTGATGGAACACTATTGGCTATGGGTTTATATGATGG  
 TTTTCGAAAGATATGGACAGAAAATGGTAACCTGGCCAGCACCTTAGGCCAACATAAAGGCCCATCTTC  
 GCTCTGAAATGGAACAAAAGGGGAATTATGTTTTGAGTGTGGTGTAGACAAAACAACAATAATTTGGG  
 ATGCTCACACAGGAGAAGCCAAACAGCAGTTTCCTTTTTCATTAGCCCCCGCCCTTGATGTGGACTGGCA  
 GAACAACATGACCTTTGCCTCCTGTAGCACAGACATGTGTATCCATGTGTGCAGGCTCGGCTGTGACCAC  
 CCAGTCAAAACCTTCCAGGGACACAAAACGAGGTCAATGCCATCAAATGGGATCCTTCTGGAATGTTGC  
 TGGCGTCTGCTCGGATGACATGACATGAAGATCTGGAGTATGAAGCAGGATGCATGCCATCCAGTCT  
 TCAGGCTCACAGCAAAGAGATCTACACCATCAAGTGGAGCCCCACCGGGCCTGCCACCAGCAACCCAAAC  
 TCAGCATCATGTTGGCAAGTGCTTCATTTGATTCTACAGTGCAGTGTGGGATGTGGAGCAAGGTGCT  
 GCACCCACACACTCATGAAGCATCAAGAGCCTGTCTACAGTGTAGCTTTAGCCCCGATGGAAGTACTT  
 GGCTAGTGGATCCTTTGACAAGTATGTTTATCTGGAATACTCAGAGTGGAAAGTCTCGTCCACAGCTAC  
 CAAGGCACTGGCGGTATCTTCGAGGTGTCTGGAACGCCCGAGGAGATAAAGTGGGCGCCAGCGCTCTG  
 ATGGCTCTGTGTGTTCTGGATCTG

**ACGCGT**ACGCGGCCGCTCGAGCAGAACTCATCTCAGAAGAGGATCTGGCAGCAAATGATATCTGGATT  
 ACAAGGATGACGACGATAAGGTTTAA

**Protein Sequence:**

>RC220139 protein sequence  
 Red=Cloning site Green=Tags(s)

MSITSDEVNFLVYRYLQESGFSHAFTFGIESHISQSNINGTLVPPSALISILQKGLQYVEAEISINKDG  
 TVFDSRPIESLSLIVAVIPDVVQMRQQAFGEKLTQQQASAAATEASAMAKAATMTPAAISQNPKNREA  
 TVNGEENGAHEINNHSKPMEDGDVEIPPNKATVLRGHESEVFCAWNVPVDLLASGSGDSTARIWNLNE  
 NSNGGSTQLVLRHCIREGGHDVPSNKDVTSLDWNDSGTLAMGSYDGFARIWTENGLASTLQHKGPFI  
 ALKWNKKNYVLSAGVDKTTIIWDAHTGEAKQQFPFHSAPALDWDWQNNMTFASCSTDMCIHVCRLGCDH  
 PVKTFQGHTNEVNAIKWDPSGMLLASCSDDMTLKIWSMKQDACVHDLQHSKEIYTIKWSPTGPATSNPN  
 SSIMLASASFDSTVRLWDVEQGVCTHTLMKHQEPVYSVAFSPDGKYLASGSFDKYVHIWNTQSGSLVHSY  
 QGTGGIFEVWCWNARGDKVGASASDGSVCVLDL

**TRTRPLEQKLI**SEEDLAANDILDYKDDDDKV

**Chromatograms:**

[https://cdn.origene.com/chromatograms/mk6606\\_d08.zip](https://cdn.origene.com/chromatograms/mk6606_d08.zip)

**Restriction Sites:**

Sgfl-MluI

**Cloning Scheme:**


**ACCN:** NM\_033284

**ORF Size:** 1566 bp

**OTI Disclaimer:** The molecular sequence of this clone aligns with the gene accession number as a point of reference only. However, individual transcript sequences of the same gene can differ through naturally occurring variations (e.g. polymorphisms), each with its own valid existence. This clone is substantially in agreement with the reference, but a complete review of all prevailing variants is recommended prior to use. [More info](#)

**OTI Annotation:** This clone was engineered to express the complete ORF with an expression tag. Expression varies depending on the nature of the gene.

**Components:** The ORF clone is ion-exchange column purified and shipped in a 2D barcoded Matrix tube containing 10ug of transfection-ready, dried plasmid DNA (reconstitute with 100 ul of water).

- Reconstitution Method:**
1. Centrifuge at 5,000xg for 5min.
  2. Carefully open the tube and add 100ul of sterile water to dissolve the DNA.
  3. Close the tube and incubate for 10 minutes at room temperature.
  4. Briefly vortex the tube and then do a quick spin (less than 5000xg) to concentrate the liquid at the bottom.
  5. Store the suspended plasmid at -20°C. The DNA is stable for at least one year from date of shipping when stored at -20°C.

**RefSeq:** [NM\\_033284.2](#)

**RefSeq Size:** 2407 bp

**RefSeq ORF:** 1569 bp

**Locus ID:** 90665

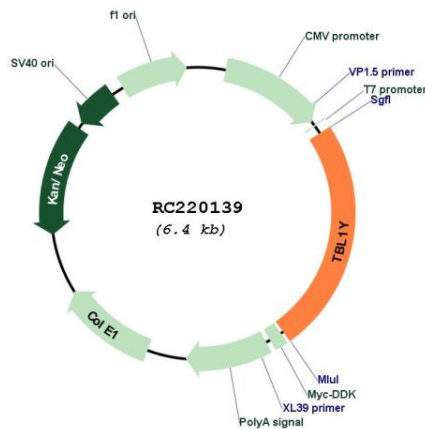
**UniProt ID:** [Q9BQ87](#)

**Cytogenetics:** Yp11.2

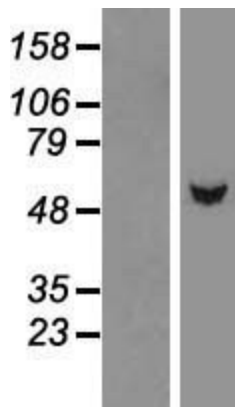
**Domains:** WD40, LisH  
**Protein Families:** Transcription Factors  
**Protein Pathways:** Wnt signaling pathway  
**MW:** 56.7 kDa

**Gene Summary:** The protein encoded by this gene has sequence similarity with members of the WD40 repeat-containing protein family. The WD40 group is a large family of proteins, which appear to have a regulatory function. It is believed that the WD40 repeats mediate protein-protein interactions and members of the family are involved in signal transduction, RNA processing, gene regulation, vesicular trafficking, cytoskeletal assembly and may play a role in the control of cytotypic differentiation. This gene is highly similar to TBL1X gene in nucleotide sequence and protein sequence, but the TBL1X gene is located on chromosome X and this gene is on chromosome Y. This gene has three alternatively spliced transcript variants encoding the same protein. [provided by RefSeq, Jul 2008]

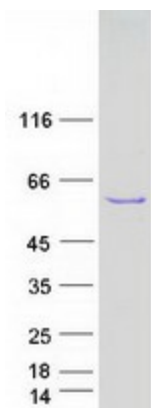
**Product images:**



Circular map for RC220139



Western blot validation of overexpression lysate (Cat# [LY409606]) using anti-DDK antibody (Cat# [TA50011-100]). Left: Cell lysates from untransfected HEK293T cells; Right: Cell lysates from HEK293T cells transfected with RC220139 using transfection reagent MegaTran 2.0 (Cat# [TT210002]).



Coomassie blue staining of purified TBL1Y protein (Cat# [TP320139]). The protein was produced from HEK293T cells transfected with TBL1Y cDNA clone (Cat# RC220139) using MegaTran 2.0 (Cat# [TT210002]).