

Product datasheet for **RC220134**

NRG1 (NM_013956) Human Tagged ORF Clone

Product data:

Product Type:	Expression Plasmids
Product Name:	NRG1 (NM_013956) Human Tagged ORF Clone
Tag:	Myc-DDK
Symbol:	NRG1
Synonyms:	ARIA; GGF; GGF2; HGL; HRG; HRG1; HRGA; MST131; MSTP131; NDF; NRG1-IT2; SMDF
Mammalian Cell Selection:	Neomycin
Vector:	pCMV6-Entry (PS100001)
E. coli Selection:	Kanamycin (25 ug/mL)



[View online »](#)

ORF Nucleotide Sequence:

>RC220134 representing NM_013956
 Red=Cloning site Blue=ORF Green=Tags(s)

TTTTGTAATACGACTCACTATAGGGCGGCCGGGAATTCGTGACTGGATCCGGTACCGAGGAGATCTGCC
 GCC**GCGATCGCC**

ATGTCGAGCGCAAAGAAGGCAGAGGCAAAGGGAAGGCAAGAAGAAGGAGCGAGGCTCCGGCAAGAAGC
 CGGAGTCCGCGGGCGGCAGCCAGAGCCAGCCTTGCCCTCCCAATTGAAAGAGATGAAAAGCCAGGAATC
 GGCTGCAGGTTCCAAACTAGTCCTTCGGTGTGAAACCAGTTCTGAATACTCCTCTCTCAGATTCAAGTGG
 TTCAAGAATGGGAATGAATTGAATCGAAAAACAAACCACAAAATATCAAGATACAAAAAGCCAGGGA
 AGTCAGAACTTCGCATTAACAAAGCATCACTGGCTGATTCTGGAGAGTATATGTGCAAAGTGATCAGCAA
 ATTAGGAAATGACAGTGCCTCTGCCAATATCACCATCGTGAATCAAACGAGATCATCACTGGTATGCCA
 GCCTCACTGAAGGAGCATATGTGTCTCAGAGTCTCCATTAGAATATCAGTATCCACAGAAGGAGCAA
 ATACTTCTTCATCTACATCTACATCCACCCTGGGACAAGCCATCTTGTAAAATGTGCGGAGAAGGAGAA
 AACTTTCTGTGTGAATGGAGGGGAGTGCTTCATGGTGAAGACCTTTCAAACCCCTCGAGATACTTGTGC
 AAGTGCCCAAATGAGTTTACTGGTGATCGCTGCCAAAACCTACGTAATGGCCAGCTTCTACAAGCATCTTG
 GGATTGAATTTATGGAGGCGGAGGAGCTGTACCAGAAGAGAGTGCTGACCATAACCCGGCATCTGCATCGC
 CCTCCTTGTGGTCCGCATCATGTGTGTGGTGGCCTACTGCAAAACCAAGAAAACAGCGGAAAAAGCTGCAT
 GACCGTCTTCGGCAGAGCCTTCGGTCTGAACGAAACAATATGATGAACATTGCCAATGGGCTCACCATC
 CTAACCCACCCCGAGAATGTCAGCTGGTGAATCAATACGTATCTAAAAACGTATCTCCAGTGAGCA
 TATTGTTGAGAGAGAAGCAGAGACATCCTTTCCACCAGTCACTATACTTCCACAGCCATCACTCCACT
 ACTGTACCCAGACTCCTAGCCACAGCTGGAGCAACGGACACACTGAAAGCATCCTTTCCGAAAGCCACT
 CTGTAATCGTGATGTCATCCGTAGAAAACAGTAGGCACAGCAGCCCAACTGGGGGCCAAAGAGACGTCT
 TAATGGCACAGGAGGCCCTCGTGAATGTAACAGCTTCTCAGGCATGCCAGAGAAAACCCCTGATTCTTAC
 CGAGACTCCTCATAGTAAAAGGTATGTGTGAGCCATGACCACCCCGGCTCGTATGTCACCTGTAGATT
 TCCACACGCCAAGCTCCCCAAATCGCCCCCTTCGAAAATGTCTCACCCCGTGTCCAGCATGACGGTGTG
 CATGCCTTCCATGGCGGTGAGCCCTTCATGGAAGAAGAGAGACCTCTACTTCTCGTGACACCACCAAGG
 CTGCGGGAGAAGAAGTTTGACCATCACCTCAGCAGTTCAGCTCCTTCCACCACAACCCCGCGCATGACA
 GTAACAGCCTCCCTGCTAGCCCCTTGAGGATAGTGGAGGATGAGGAGTATGAAACGACCCAAGAGTACGA
 GCCAGCCAAGAGCCTGTTAAGAACTCGCCAATAGCCGGCGGGCCAAAAGAACCAAGCCCAATGGCCAC
 ATTGCTAACAGATTGGAAGTGGACAGCAACACAAGCTCCAGAGCAGTAACTCAGAGAGTGAACAGAAG
 ATGAAAGAGTAGGTGAAGATACGCCTTCTGGGCATACAGAACCCCTGGCAGCCAGTCTTGAGGCAAC
 ACCTGCCTTCGCTGGCTGACAGCAGGACTAACCAGCAGTCCGCTTCTCGACACAGGAAGAAATCCAG
 GCCAGGCTGTCTAGTGAATTGCTAACCAAGACCTATTGCTGTA

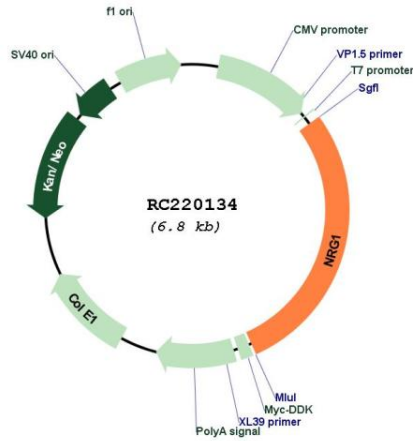
ACGCGTACGCGGCCGCTCGAGCAGAAACTCATCTCAGAAGAGGATCTGGCAGCAAATGATATCCTGGATT
 ACAAGGATGACGACGATAAGGTTTAA

OTI Disclaimer:	Due to the inherent nature of this plasmid, standard methods to replicate additional amounts of DNA in E. coli are highly likely to result in mutations and/or rearrangements. Therefore, OriGene does not guarantee the capability to replicate this plasmid DNA. Additional amounts of DNA can be purchased from OriGene with batch-specific, full-sequence verification at a reduced cost. Please contact our customer care team at custsupport@origene.com or by calling 301.340.3188 option 3 for pricing and delivery.
	The molecular sequence of this clone aligns with the gene accession number as a point of reference only. However, individual transcript sequences of the same gene can differ through naturally occurring variations (e.g. polymorphisms), each with its own valid existence. This clone is substantially in agreement with the reference, but a complete review of all prevailing variants is recommended prior to use. More info
OTI Annotation:	This clone was engineered to express the complete ORF with an expression tag. Expression varies depending on the nature of the gene.
Components:	The ORF clone is ion-exchange column purified and shipped in a 2D barcoded Matrix tube containing 10ug of transfection-ready, dried plasmid DNA (reconstitute with 100 ul of water).
Reconstitution Method:	<ol style="list-style-type: none"> 1. Centrifuge at 5,000xg for 5min. 2. Carefully open the tube and add 100ul of sterile water to dissolve the DNA. 3. Close the tube and incubate for 10 minutes at room temperature. 4. Briefly vortex the tube and then do a quick spin (less than 5000xg) to concentrate the liquid at the bottom. 5. Store the suspended plasmid at -20°C. The DNA is stable for at least one year from date of shipping when stored at -20°C.
Note:	Plasmids are not sterile. For experiments where strict sterility is required, filtration with 0.22um filter is required.
RefSeq:	NM_013956.5
RefSeq Size:	2583 bp
RefSeq ORF:	1938 bp
Locus ID:	3084
UniProt ID:	Q02297
Cytogenetics:	8p12
Protein Families:	Druggable Genome, Secreted Protein, Transcription Factors, Transmembrane
Protein Pathways:	ErbB signaling pathway
MW:	71 kDa

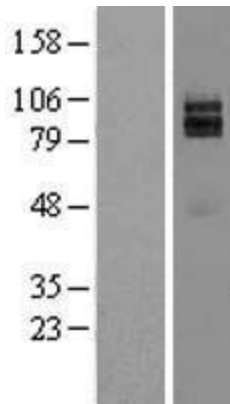
Gene Summary:

The protein encoded by this gene is a membrane glycoprotein that mediates cell-cell signaling and plays a critical role in the growth and development of multiple organ systems. An extraordinary variety of different isoforms are produced from this gene through alternative promoter usage and splicing. These isoforms are expressed in a tissue-specific manner and differ significantly in their structure, and are classified as types I, II, III, IV, V and VI. Dysregulation of this gene has been linked to diseases such as cancer, schizophrenia, and bipolar disorder (BPD). [provided by RefSeq, Apr 2016]

Product images:



Circular map for RC220134



Western blot validation of overexpression lysate (Cat# [LY415553]) using anti-DDK antibody (Cat# [TA50011-100]). Left: Cell lysates from untransfected HEK293T cells; Right: Cell lysates from HEK293T cells transfected with RC220134 using transfection reagent MegaTran 2.0 (Cat# [TT210002]).