

Product datasheet for **RC220131**

Folate Binding Protein (FOLR1) (NM_016725) Human Tagged ORF Clone

Product data:

Product Type:	Expression Plasmids
Product Name:	Folate Binding Protein (FOLR1) (NM_016725) Human Tagged ORF Clone
Tag:	Myc-DDK
Symbol:	Folate Binding Protein
Synonyms:	FBP; FOLR; FRalpha; NCFTD
Mammalian Cell Selection:	Neomycin
Vector:	pCMV6-Entry (PS100001)
E. coli Selection:	Kanamycin (25 ug/mL)
ORF Nucleotide Sequence:	>RC220131 representing NM_016725 Red=Cloning site Blue=ORF Green=Tags(s)

TTTTGTAATACGACTCACTATAGGGCGGCCGGAATTCGTCGACTGGATCCGGTACCGAGGAGATCTGCC
GCC**CGATCGCC**

ATGGCTCAGCGGATGACAACACAGCTGCTCCTTCTAGTGTGGGTGGCTGTAGTAGGGGAGGCTCAGA
CAAGGATTGCATGGGCCAGGACTGAGCTTCTCAATGTCTGCATGAACGCCAAGCACCACAAGGAAAAGCC
AGGCCCGAGGACAAGTTGCATGAGCAGTGTGACCCCTGGAGGAAGAATGCCTGCTGTTCTACCAACACC
AGCCAGGAAGCCCATAAGGATGTTTCTACCTATATAGATTCAACTGGAACCACTGTGGAGAGATGGCAC
CTGCCTGCAAACGGCATTTCATCCAGGACACCTGCCTCTACGAGTGCTCCCCAACTTGGGGCCCTGGAT
CCAGCAGGTGGATCAGAGCTGGCGCAAAGAGCGGGTACTGAACGTGCCCTGTGCAAAGAGGACTGTGAG
CAATGGTGGGAAGATTGTCGCACCTCTACACCTGCAAGAGCAACTGGCACAAGGGCTGGAAGTGGACTT
CAGGGTTTAAACAAGTGCAGTGGGAGCTGCCTGCCAACCTTTCCATTTCTACTTCCCCACACCCACTGT
TCTGTGCAATGAAATCTGGACTCACTCCTACAAGGTCAGCAACTACAGCCGAGGGAGTGGCCGCTGCATC
CAGATGTGGTTCGACCCAGCCAGGGCAACCCCAATGAGGAGGTGGCGAGGTTCTATGCTGCAGCCATGA
GTGGGGCTGGGCCCTGGGCAGCCTGGCCTTTCTGCTTAGCCTGGCCCTAATGCTGCTGTGGCTGCTCAG
C

ACGCGTACGCGGCCGCTCGAGCAGAACTCATCTCAGAAGAGGATCTGGCAGCAAATGATATCCTGGATT
ACAAGGATGACGACGATAAGGTTTAA



[View online »](#)

Protein Sequence: >RC220131 representing NM_016725
 Red=Cloning site Green=Tags(s)

MAQRMTTQLLLLLVWVAVVGEAQTRIAWARTELLNVCMNAAHHHKEKPGPEDKLEQCRPWRKNACCSTNT
 SQEAHKDVSYL YRFNWNHCGEMAPACKRHF IQDTCLYECSPNLGPWIQQVDQSWRKERVLNVPLCKEDCE
 QWWEDCRTSYTCKSNWHKGWNWTSGFNKCAVGAACQPFHFYFPTVLCNEIWTHSYKVSNSYRSGSGRCI
 QMWFDPAQGNPNEEVARFYAAAAMSGAGPWAAWPFLLSLALMLLWLLS

TRTRPLEQKLISEEDLAANDILDYKDDDDKV

Chromatograms: https://cdn.origene.com/chromatograms/mk6116_c04.zip

Restriction Sites: SgfI-MluI

Cloning Scheme:



ACCN: NM_016725

ORF Size: 771 bp

OTI Disclaimer: The molecular sequence of this clone aligns with the gene accession number as a point of reference only. However, individual transcript sequences of the same gene can differ through naturally occurring variations (e.g. polymorphisms), each with its own valid existence. This clone is substantially in agreement with the reference, but a complete review of all prevailing variants is recommended prior to use. [More info](#)

OTI Annotation: This clone was engineered to express the complete ORF with an expression tag. Expression varies depending on the nature of the gene.

Components: The ORF clone is ion-exchange column purified and shipped in a 2D barcoded Matrix tube containing 10ug of transfection-ready, dried plasmid DNA (reconstitute with 100 ul of water).

Reconstitution Method:

1. Centrifuge at 5,000xg for 5min.
2. Carefully open the tube and add 100ul of sterile water to dissolve the DNA.
3. Close the tube and incubate for 10 minutes at room temperature.
4. Briefly vortex the tube and then do a quick spin (less than 5000xg) to concentrate the liquid at the bottom.
5. Store the suspended plasmid at -20°C. The DNA is stable for at least one year from date of shipping when stored at -20°C.

RefSeq: [NM_016725.3](#)

RefSeq Size: 1104 bp

RefSeq ORF: 774 bp

Locus ID: 2348

UniProt ID: [P15328](#)

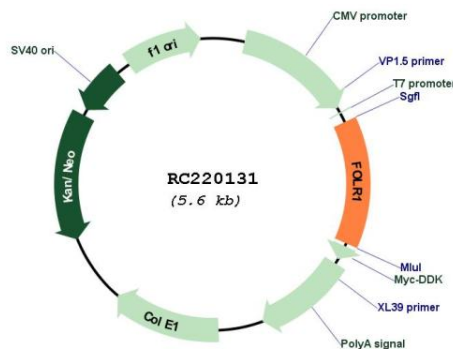
Cytogenetics: 11q13.4

Protein Families: Druggable Genome, Secreted Protein, Transmembrane

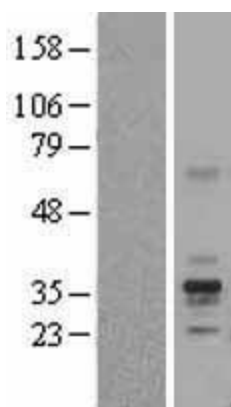
MW: 29.82 kDa

Gene Summary: The protein encoded by this gene is a member of the folate receptor family. Members of this gene family bind folic acid and its reduced derivatives, and transport 5-methyltetrahydrofolate into cells. This gene product is a secreted protein that either anchors to membranes via a glycosyl-phosphatidylinositol linkage or exists in a soluble form. Mutations in this gene have been associated with neurodegeneration due to cerebral folate transport deficiency. Due to the presence of two promoters, multiple transcription start sites, and alternative splicing, multiple transcript variants encoding the same protein have been found for this gene. [provided by RefSeq, Oct 2009]

Product images:



Circular map for RC220131



Western blot validation of overexpression lysate (Cat# [LY402579]) using anti-DDK antibody (Cat# [TA50011-100]). Left: Cell lysates from untransfected HEK293T cells; Right: Cell lysates from HEK293T cells transfected with RC220131 using transfection reagent MegaTran 2.0 (Cat# [TT210002]).