

## Product datasheet for RC220120

### KIF24 (NM\_194313) Human Tagged ORF Clone

#### Product data:

Product Type:	Expression Plasmids
Product Name:	KIF24 (NM_194313) Human Tagged ORF Clone
Tag:	Myc-DDK
Symbol:	KIF24
Synonyms:	bA571F15.4; C9orf48
Mammalian Cell Selection:	Neomycin
Vector:	pCMV6-Entry (PS100001)
E. coli Selection:	Kanamycin (25 ug/mL)
ORF Nucleotide Sequence:	>RC220120 representing NM_194313 Red=Cloning site Blue=ORF Green=Tags(s)

TTTTGTAATACGACTCACTATAGGGCGGCCGGAATTCGTCGACTGGATCCGGTACCGAGGAGATCTGCC  
GCC**CGATCGCC**

ATGGCATCCTGGTTATATGAATGTCTTTGTGAAGCTGAACTTGCACAGTATTATTCTCATTCTCACTGCC  
TTGGCCTTCAGAAAATAGATGAATTAGCCAAGATTACAATGAAGGACTACTCAAATTAGGAGTCCATGA  
CATGAACGACCGCAAACGTCTCTCCAACCTATCAAAATTATTAAGATTATGCAAGAAGAAGATAAAGCA  
GTCAGTATCCCAGAGCGTCATCTTCAGACAAGCAGCCTGCGCATCAAATCTCAGGAATTAAGATCTGGCC  
CTCGCAGACAGCTGAATTTTGTCTCTCTGCTGACAATAAAGACAGAAATGCCAGCAATGATGGGTTTGA  
AATGTGCAGTTTATCAGATTTCTCTGCAAATGAACAGAAGTCCACTTACCTAAAAGTGCTAGAACACATG  
CTACCAGATGATCCAGTACCATACAAAAACAGGAATTCGAATGCCACAGCTGGTGATTCCTATGTGC  
AAACAGAAATCAGCACTTCACTCTTTTACCAAATACCTTTCTGCAATACTGGGGGATTGTGATATTCC  
CATTATTCAAAGAATCTCTCATGTTTCAGGGTATAACTATGGAATCCCTCATTCTTGATCAGACAGAAC  
ACTTCAGAGAAACAGAAATCCTTGGACTGAGATGGAGAAAATCAGAGTTTGTGTTGAAAACGCCCCCTGG  
GCATGAGGGAGGTACGTCGTGGAGAAATTAATATTACTGTAGAAGACAAAGAACTCTACTTGTGCA  
TGAGAAGAAAGAAGCAGTTGACCTCACTCAATATATTCTGCAGCATGTTTTTTATTTTGTGAAGTCTTT  
GGTGAGCGTGCACCAATCAGGATGTATACATGAAGACTACTCACCCACTATTCCAGCATTTTTCAATG  
GAGGCAATGCCACTTGCTTTGCTTATGGACAGACAGGTGCTGAAAAGACCTACCCATGATAGAACTCA  
TGAGAACCAGGATTGTATGCTCTAGCTGCCAAAGATATCTTCAGGCAACTAGAAGTGCCAGCCAAGA  
AAGCACCTCTTTGTGGATCAGCTTCTATGAAATTTACTGTGGACAGCTTTATGACCTCTAAATAGAA  
GAAAAAGGCTCTTTGCAAGAGAAGATAGCAAGCACATGGTGCAGATAGTGGGACTGCAAGAGCTTCAGGT  
GGACAGTGTGGAGCTCCTTAGAGGTGATCTTAAAGGGCAGCAAGGAGCGCAGCACTGGGGCCACTGGA  
GTTAATGCAGACTCCTCCGCTCCCATGCCGTATCCAAATTCAGATCAAAGATTCAGCCAAGAGGACAT  
TTGGCAGGATCTTTTTATTGACTTGGCTGGCAGTGAAAGAGCAGCAGATGCAAGGGACTCAGATAGACA  
GACAAAGATGGAAGGTGCAGAAATAATCAGAGTCTACTGGCTCTGAAGGAATGTATCCGAGCACTGGAT



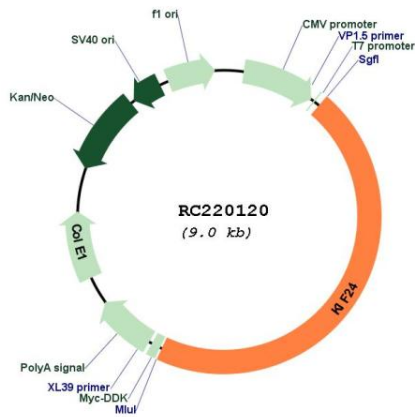
CAGGAACACACCCATACTCCCTTCAGGCAAAGCAAACAACTCACTCAGGTCCTGAAGGACTCTTTCATCGGCA  
ATGCCAAAACCTGCATGATCGCCAAACATCTCACCAGCCACGTGGCCACTGAACACACTCTCAACACCTT  
GCGCTATGCTGACCGGGTCAAAGAACTAAAGAAAGGCATTAAGTGTTCAGCTTACAGTTCGAAAT  
CGGACATCTGGAACTCCTCTCCAAAACGAATTCAGAGCTCCCTGGGGCTTGTGAGAGGACAAATGTT  
CTCCAAAAAAGTCAAGCTGGGATTTGAGCAGTCACTCACAGTGGCAGCCCTGGTTCACGAGAGGGAA  
GGTCCATCCTCTGACCAGCCACCCACCCAACTTCCTTTACTTCTGCACCTAAGGTCTGTGTAAGG  
GGTGGCTCCAGAGGGAGTCCCTTACAAGAGTGGGTCATTATGCTAGCCCTGTGAAAGGAACTGTGCGCT  
CTGGACATGTGGCCAAAAAAGCCAGAAGAGTCAGCACCATTTGCTCTGAGAAAAATCGAATGGGCAA  
CAAACTGTCTTGGGTGGGAAAGCAGGGCCTCAGGCCAGGAGAAGGCCTAGTGCCTGGTAAGGTGTCC  
ACCAAGTGAAGAAAGTGCAGACAGTGCAGCCAGTACAGAAGCAGCTTGTGTCTCGAGTTGAGCTCTCT  
TTGGCAACGCCACCACAGGGCTGAGTACAGTCAAGACAGCCAGAGGGGCACGCCTGCTAGGCTGCCTC  
TGAAGCTTGGACAAACATCCCGCCACATCAGAAGGAGAGGGAGGAACATCTGCGTTTCTATCACCAGCAG  
TTCCAACAGCCACCTCTCTCCAACAGAAGTAAAATACCAACCCTGAAAAGGTCTTTACGCCAGTACA  
GGCCCCCAGAGGGTCACTCACGAATGAGACTCCGCTCTGTTCCACTTACTCTGAAAACCATGATGG  
AGCCCAAGTAGAGGAACTTGATGACAGTATTTCACTGAAGATTCTTTTACACATCTCTAGTCAGAGG  
GCCAAAAAGCAAAGGAACACCCTGGAGAATAGCGAAGACTCATTCTTCTGCACCAGACGTGGGGACAGG  
GTCTGAGAAGCAGGTGGCAGAAAGACAGCAGAGTCTGTTTTCTAGCCCCAGGACAGGTGACAAGAAAGA  
TCTAACTAAAAGCTGGGTGGACTCCAGGGACCCATAAACACAGAAGAGCAGCACTCGATCACAGCTGC  
AGCCCAAGTAAGGGGCCCGTGGACTGGAGCAGAGAGAAGTCTACTTCTCAGGGCCTTCTCCAGAGACA  
GCCTGGCAGAGAAGCCATACTGTTTACAGGTAGATTTATATAGACAGGAAAGAGGTGGAGGCTCTTC  
CTTTGATCTCAGAAAGGATGCCTCCAAAGTGAGGTTTCTGGGGAGAATGAGGGCAACTTGCCATCCCCA  
GAGGAAGATGGTTTCACTATCTCATTGTCCACGTTGCAGTTCCTGGATCCCCAGACCAAGAGACACAG  
TCACCACACTCTGAGAGAAGTCACTGACAGCGGCCCAATCCAGGTGACCAGCACTGTGAAAAACGGTCA  
TGCTGTCCCAGGAGAGGATCCTAGGGGGCAGTTAGGCACGCATGCTGAATATGTTCTGGACTCATGTCT  
CCCCTACCATGTCCCTCCTGGAGAACCAGACAACGAAGGGTCTCCTCCTCGGAGCAGCTGGTCCAGG  
ATGGGGCTACGCACAGTCTAGTGGCAGAGAGCACAGGGGGCCAGTTGTGAGCCACACAGTGCCATCTGG  
TGATCAAGAGGCAGCCTTGCCAGTGTCTCAGCAACTAGGCACCTGTGGCTGTCTCATCTCCCCTGAT  
AATAAGCCTGGTGGTGTCTTCCAGCTCTGTCCCATCACCATCCGTGACACCCAGCTGACAAGCTGC  
CCAGCAGGGAGGCAGACCTAGGAGAGGCCTGCCAGAGCAGAGAGACTGTACTTTTCTCCACGAACACAT  
GGGTAGTGAGCAGTATGATGCTGATGCAGAGGAGACGGGGCTGGATGGCTCCTGGGGTTCCAGGAAAG  
CCCTTACCACCATACATATGGGGGTACCCATTCTGGACCTCACTCACCCACGAACAGGAAGTAGTG  
ATGTGGCTGACCAGCTCTGGGCCAGGAGAGAAAACATCTACAAGGCTTGGTTGGCAGGAGTTGGTTT  
GTCCACAGACCCATCAAGTTGCCCTGCAACAGTAAAAATGTCACATGGCTCAAACCCAGGCCGATCTCA  
AGGTGCTTAGCAAGGCCAAGTTCTCCCTTGGTTCCAGCTGCTCTCCAAGACTGCAGGGCACTCCGTC  
AGCCCACCCTGGAGCAAGCGCAGCAGGTGGTATCCGAGCACACCAGGAACAGCTGGATGAAATGGCTGA  
GCTCGGCTTCAAGGAGGAGACGCTGATGAGCCAGCTGGCTTCTAATGATTTTGAAGATTTTGTGACCCAG  
CTGGATGAAATCATGTTTCTGAAATCCAAGTGTATCCAGAGTCTGAGGAGCCAGCTGCAGCTCTATCTCA  
CCTGCCACGGGCCACCCAGCCCTGAGGGAACAGTGCCGCT

ACGCGTACGCGGCCGCTCGAGCAGAACTCATCTCAGAAGAGGATCTGGCAGCAAATGATATCCTGGATT  
ACAAGGATGACGACGAT AAGGTTTAA

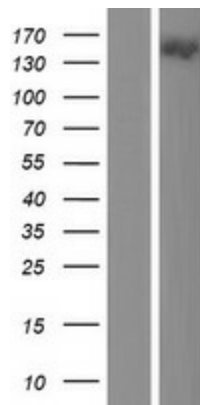


<b>OTI Disclaimer:</b>	The molecular sequence of this clone aligns with the gene accession number as a point of reference only. However, individual transcript sequences of the same gene can differ through naturally occurring variations (e.g. polymorphisms), each with its own valid existence. This clone is substantially in agreement with the reference, but a complete review of all prevailing variants is recommended prior to use. <a href="#">More info</a>
<b>OTI Annotation:</b>	This clone was engineered to express the complete ORF with an expression tag. Expression varies depending on the nature of the gene.
<b>Components:</b>	The ORF clone is ion-exchange column purified and shipped in a 2D barcoded Matrix tube containing 10ug of transfection-ready, dried plasmid DNA (reconstitute with 100 ul of water).
<b>Reconstitution Method:</b>	<ol style="list-style-type: none"><li>1. Centrifuge at 5,000xg for 5min.</li><li>2. Carefully open the tube and add 100ul of sterile water to dissolve the DNA.</li><li>3. Close the tube and incubate for 10 minutes at room temperature.</li><li>4. Briefly vortex the tube and then do a quick spin (less than 5000xg) to concentrate the liquid at the bottom.</li><li>5. Store the suspended plasmid at -20°C. The DNA is stable for at least one year from date of shipping when stored at -20°C.</li></ol>
<b>RefSeq:</b>	<a href="#">NM_194313.4</a>
<b>RefSeq Size:</b>	6237 bp
<b>RefSeq ORF:</b>	4107 bp
<b>Locus ID:</b>	347240
<b>UniProt ID:</b>	<a href="#">Q5T7B8</a>
<b>Cytogenetics:</b>	9p13.3
<b>Protein Families:</b>	Druggable Genome
<b>MW:</b>	151.7 kDa
<b>Gene Summary:</b>	This gene encodes a member of the kinesin superfamily of microtubule-based motor proteins which are involved in the intracellular transport of membranous organelles, protein complexes, and mRNAs. They also play critical roles in mitosis, morphogenesis, and signal transduction. The encoded protein contains an N-terminal sterile alpha motif (SAM) domain and an ATP-binding kinesin motor domain. It binds centriolar coiled coil protein 110 and centrosomal protein 97 and localizes to the mother centriole to regulate ciliogenesis by controlling microtubule polymerization. [provided by RefSeq, Mar 2017]

Product images:



Circular map for RC220120



Western blot validation of overexpression lysate (Cat# [LY405163]) using anti-DDK antibody (Cat# [TA50011-100]). Left: Cell lysates from untransfected HEK293T cells; Right: Cell lysates from HEK293T cells transfected with RC220120 using transfection reagent MegaTran 2.0 (Cat# [TT210002]).