

## Product datasheet for RC220117

### Cathepsin E (CTSE) (NM\_148964) Human Tagged ORF Clone

#### Product data:

Product Type:	Expression Plasmids
Product Name:	Cathepsin E (CTSE) (NM_148964) Human Tagged ORF Clone
Tag:	Myc-DDK
Symbol:	Cathepsin E
Synonyms:	CATE
Mammalian Cell Selection:	Neomycin
Vector:	pCMV6-Entry (PS100001)
E. coli Selection:	Kanamycin (25 ug/mL)
ORF Nucleotide Sequence:	>RC220117 representing NM_148964 Red=Cloning site Blue=ORF Green=Tags(s)

TTTTGTAATACGACTCACTATAGGGCGGCCGGAATTCGTCGACTGGATCCGGTACCGAGGAGATCTGCC  
GCC**CGATCGC**C

ATGAAACGCTCCTTCTTTGCTGCTGGTCTCCTGGAGCTGGGAGAGGCCAAGGATCCCTTCACAGGG  
TGCCCTCAGGAGGCATCCGTCCTCAAGAAGAAGCTGCGGGCACGGAGCCAGCTCTCTGAGTTCTGGAA  
ATCCATAATTTGGACATGATCCAGTTCACCGAGTCTGCTCAATGGACCAGAGTGCCAAGGAACCCCTC  
ATCAACTACTTGGATATGAATACTTCGGCACTATCTCCATTGGCTCCCCACCACAGAATTCACGTGCA  
TCTTCGACACTGGCTCCTCCAACTCTGGTCCCCTCTGTGTACTGCACTAGCCCAGCCTGCAAGACGCA  
CAGCAGGTTCCAGCCTTCCAGTCCAGCACATACAGCCAGCCAGGTCATCTTTCTCCATTCAAGTATGGA  
ACCGGGAGCTTGTCCGGGATCATTGGAGCCGACCAAGTCTCTGTGGAAGGACTAACCGTGGTTGGCCAGC  
AGTTTGGAGAAAGTGTACAGAGCCAGGCCAGACCTTTGTGGATGCAGAGTTTGTGGAATTCTGGGCT  
GGGATACCCCTCCTTGGCTGTGGGAGGAGTGACTCCAGTATTTGACAACATGATGGCTCAGAACCTGGTG  
GACTTGCCGATGTTTTCTGTCTACATGAGCAGTAACCCAGAAGGTGGTGGGGAGCGAGCTGATTTTTG  
GAGGCTACGACCACTCCCATTTCTCTGGGAGCCTGAATGGGTCCCAGTACCAAGCAAGCTTACTGGCA  
GATTGCACTGGATAATATGCTGTGGAGTGTGCCAACCTAACGTATGCCGATGTCACCTTCACCATTA  
ACGGAGTCCCCTATACCCTCAGCCAACTGCCTACACCCTACTGGACTTCGTGGATGGAATGCAGTTCTG  
CAGCAGTGGCTTTCAAGGACTTGACATCCACCCTCCAGCTGGGCCCTCTGGATCCTGGGGATGTCTTC  
ATTCGACAGTTTTACTAGTCTTTGACCGTGGGAATAACCGTGTGGGACTGGCCCCAGCAGTCCCCTAAG  
GAGGGCCTTGTGTCTGTGCCTGCCTGTCTGACAGACCT

**ACGCGT**ACGCGGCCGCTCGAGCAGAAACTCATCTCAGAAGAGGATCTGGCAGCAATGATATCCTGGATT  
ACAAGGATGACGACGATAAGGTTAA



[View online »](#)



**Reconstitution Method:**

1. Centrifuge at 5,000xg for 5min.
2. Carefully open the tube and add 100ul of sterile water to dissolve the DNA.
3. Close the tube and incubate for 10 minutes at room temperature.
4. Briefly vortex the tube and then do a quick spin (less than 5000xg) to concentrate the liquid at the bottom.
5. Store the suspended plasmid at -20°C. The DNA is stable for at least one year from date of shipping when stored at -20°C.

**RefSeq:** [NM\\_148964.3](#)

**RefSeq Size:** 2086 bp

**RefSeq ORF:** 1092 bp

**Locus ID:** 1510

**UniProt ID:** [P14091](#)

**Cytogenetics:** 1q32.1

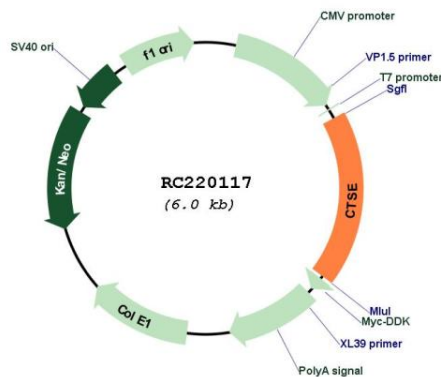
**Protein Families:** Druggable Genome, Protease

**Protein Pathways:** Lysosome

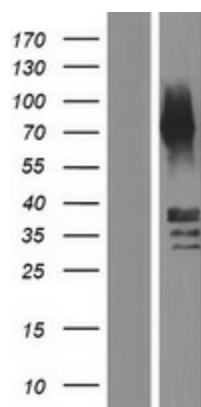
**MW:** 37.7 kDa

**Gene Summary:** This gene encodes a member of the A1 family of peptidases. Alternative splicing of this gene results in multiple transcript variants. At least one of these variants encodes a preproprotein that is proteolytically processed to generate the mature enzyme. This enzyme, an aspartic endopeptidase, may be involved in antigen processing and the maturation of secretory proteins. Elevated expression of this gene has been observed in neurodegeneration. [provided by RefSeq, Nov 2015]

### Product images:



Circular map for RC220117



Western blot validation of overexpression lysate (Cat# [LY407709]) using anti-DDK antibody (Cat# [TA50011-100]). Left: Cell lysates from untransfected HEK293T cells; Right: Cell lysates from HEK293T cells transfected with RC220117 using transfection reagent MegaTran 2.0 (Cat# [TT210002]).