

Product datasheet for RC220110

NPM2 (NM_182795) Human Tagged ORF Clone

Product data:

Product Type: Expression Plasmids
 Product Name: NPM2 (NM_182795) Human Tagged ORF Clone
 Tag: Myc-DDK
 Symbol: NPM2
 Mammalian Cell Selection: Neomycin
 Vector: pCMV6-Entry (PS100001)
 E. coli Selection: Kanamycin (25 ug/mL)
 ORF Nucleotide Sequence: >RC220110 representing NM_182795
 Red=Cloning site Blue=ORF Green=Tags(s)

TTTTGTAATACGACTCACTATAGGGCGGCCGGAATTCGTCGACTGGATCCGGTACCGAGGAGATCTGCC
 GCCCGATCGCC

ATGAATCTCAGTAGCGCCAGTAGCACGGAGGAAAAGGCAGTGACGACCGTGCTCTGGGGCTGCGAGCTCA
 GTCAGGAGAGGGCGGACTTGGACCTTCAGACCCAGCTGGAGGGGAAGCAGAGCTGCAGGCTGTTGCTTCA
 TACGATTTGCTTGGGGGAGAAAGCCAAAGAGGAGATGCATCGCGTGGAGATCCTGCCCCAGCAAACCAG
 GAGGACAAGAAGATGCAGCCGGTCACCATTCCTCACTCCAGGCCTCAGTCTCCCATGGTCTCCATGG
 TAGGAGTGCAGCTTTCTCCCCAGTTACTTTCCAGCTCCGGGCTGGCTCAGGACCCGTGTTCTCAGTGG
 CCAGGAACGTTATGAAGCATCAGACCTAACCTGGGAGGAGGAGGGAAGAAGAAGGGGAGGAGGAGGAA
 GAGGAAGAGGAAGATGATGAGGATGAGGATGCAGATATATCTCTGGAGGAGCAAAGCCCTGTCAAACAAG
 TCAAAAAGGCTGGTQCCCCAGAAGCAGGCGAGCGTGCTAAGAAAAAAGCTGGAAAAAGAAGAAGAGGA
 AATAAGAGCCAGCGTTAGAGACAAGAGCCCTGTGAAAAAGCCAAAGCCACAGCCAGAGCCAAGAAGCCA
 GGATTC AAGAAA

ACGCGTACGCGGCCGCTCGAGCAGAAACTCATCTCAGAAGAGGATCTGGCAGCAATGATATCCTGGATT
 ACAAGGATGACGACGATAAGGTTTAA

Protein Sequence: >RC220110 representing NM_182795
 Red=Cloning site Green=Tags(s)

MNLSASSTEEKAVTTVLWGCELSQERRTWTFRPQLGKQSCRLLLHTICLGEKAKEEMHRVEILPPANQ
 EDKKMQPVTIASLQASVLPVSMVGVQLSPPVTFQLRAGSGPVFLSGQERYEASDLTWEEEEEEEEEEEE
 EEEEDDEDADISLEEQSPVKQVKRLVPQKQASVAKKKKLEKEEEEIRASVRDKSPVKKAKATARAKKP
 GFKK

TRTRPLEQKLISEEDLAANDILDYKDDDDKV

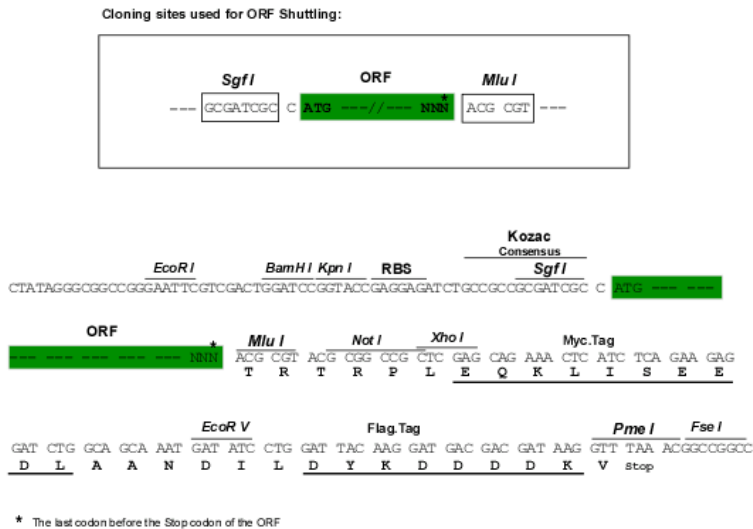


[View online »](#)

Chromatograms: https://cdn.origene.com/chromatograms/mk8020_e04.zip

Restriction Sites: SgfI-MluI

Cloning Scheme:



ACCN: NM_182795

ORF Size: 642 bp

OTI Disclaimer: The molecular sequence of this clone aligns with the gene accession number as a point of reference only. However, individual transcript sequences of the same gene can differ through naturally occurring variations (e.g. polymorphisms), each with its own valid existence. This clone is substantially in agreement with the reference, but a complete review of all prevailing variants is recommended prior to use. [More info](#)

OTI Annotation: This clone was engineered to express the complete ORF with an expression tag. Expression varies depending on the nature of the gene.

Components: The ORF clone is ion-exchange column purified and shipped in a 2D barcoded Matrix tube containing 10ug of transfection-ready, dried plasmid DNA (reconstitute with 100 ul of water).

Reconstitution Method:

1. Centrifuge at 5,000xg for 5min.
2. Carefully open the tube and add 100ul of sterile water to dissolve the DNA.
3. Close the tube and incubate for 10 minutes at room temperature.
4. Briefly vortex the tube and then do a quick spin (less than 5000xg) to concentrate the liquid at the bottom.
5. Store the suspended plasmid at -20°C. The DNA is stable for at least one year from date of shipping when stored at -20°C.

RefSeq: [NM_182795.1](#), [NP_877724.1](#)

RefSeq Size: 1118 bp

RefSeq ORF: 645 bp

Locus ID: 10361

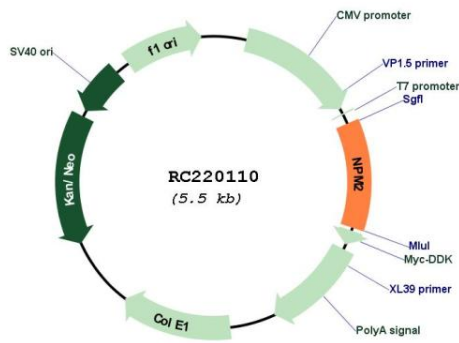
UniProt ID: [Q86SE8](#)

Cytogenetics: 8p21.3

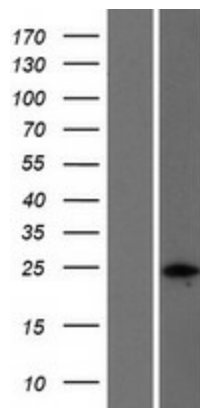
MW: 24 kDa

Gene Summary: Core histones chaperone involved in chromatin reprogramming, specially during fertilization and early embryonic development. Probably involved in sperm DNA decondensation during fertilization.[UniProtKB/Swiss-Prot Function]

Product images:



Circular map for RC220110



Western blot validation of overexpression lysate (Cat# [LY405359]) using anti-DDK antibody (Cat# [TA50011-100]). Left: Cell lysates from untransfected HEK293T cells; Right: Cell lysates from HEK293T cells transfected with RC220110 using transfection reagent MegaTran 2.0 (Cat# [TT210002]).