

## Product datasheet for **RC220109**

### Ephrin A4 (EFNA4) (NM\_182690) Human Tagged ORF Clone

#### Product data:

**Product Type:** Expression Plasmids  
**Product Name:** Ephrin A4 (EFNA4) (NM\_182690) Human Tagged ORF Clone  
**Tag:** Myc-DDK  
**Symbol:** Ephrin A4  
**Synonyms:** EFL4; EPLG4; LERK4  
**Mammalian Cell Selection:** Neomycin  
**Vector:** pCMV6-Entry (PS100001)  
**E. coli Selection:** Kanamycin (25 ug/mL)  
**ORF Nucleotide Sequence:** >RC220109 representing NM\_182690  
 Red=Cloning site Blue=ORF Green=Tags(s)

TTTTGTAATACGACTCACTATAGGGCGGCCGGAATTCGTCGACTGGATCCGGTACCGAGGAGATCTGCCGCC**CGATCGCC**

ATGCGGCTGCTGCCCTGCTGCGGACTGTCCTCTGGGCCGCTTCTCGGCTCCCCTCTGCGGGGGGCTCCAGCCTCGCCACGTAGTCTACTGGAAGTCCAGTAACCCAGGTTGCTTCGAGGAGACGCCGTGGTGGAGCTGGGCTCAACGATTACCTAGACATTGTCTGCCCCACTACGAAGGCCAGGGCCCCCTGAGGGCCCCGAGACGTTTGTGTACATGGTGGACTGGCCAGGCTATGAGTCTGCCAGGCAGAGGGCCCCCGGGCTACAAGCGCTGGGTGTGCTCCCTGCCCTTTGGCCATGTTCAATTCTCAGAGAAGATTACAGCGCTTCACACCCTTCTCCCTCGGCTTTGAGTTCTTACCTGGAGAGACTTACTACTACATCTCGGTGCCACTCCAGAGAGTTCTGGCCAGTGTGAGGCTCCAGGTGTCTGTCTGCTGCAAGGAGAGAACCTTCCCTCTCATCCCAAGGAGCCAGAGTCTCCCAAGATCCCCTGGAGGAGGAGGGATCCCTGCTGCCTGCACTGGGGGTGCCAATTACGACCGACAAGATGGAGCAT

**ACGCGT**ACGCGGCCGCTCGAGCAGAACTCATCTCAGAAGAGGATCTGGCAGCAATGATATCCTGGATTACAAGGATGACGACGATAAGGTTTAA

**Protein Sequence:** >RC220109 representing NM\_182690  
 Red=Cloning site Green=Tags(s)

MRLPLLRVTLWAAFLGSPRLRGGSSLRHVYWNSSNPRLLRGDAVVELGLNDYLDIVCPHYEGPPPEGETFALYMVDWPGYESQAEPRAYKRWVCSLPGHVQFSEKIQRFTFSLGFELPGETYYYYISVPTPESGQCLRLQVSVCKERNLPSHPKEPESSQDPLEEEGSLLPALGVPIQTDKMEH

**TRTRPLEQKLI**SEEDLAANDILDYKDDDDKV



[View online »](#)

**Chromatograms:** [https://cdn.origene.com/chromatograms/mk8013\\_f04.zip](https://cdn.origene.com/chromatograms/mk8013_f04.zip)

**Restriction Sites:** SgfI-MluI

**Cloning Scheme:**



**ACCN:** NM\_182690

**ORF Size:** 579 bp

**OTI Disclaimer:** The molecular sequence of this clone aligns with the gene accession number as a point of reference only. However, individual transcript sequences of the same gene can differ through naturally occurring variations (e.g. polymorphisms), each with its own valid existence. This clone is substantially in agreement with the reference, but a complete review of all prevailing variants is recommended prior to use. [More info](#)

**OTI Annotation:** This clone was engineered to express the complete ORF with an expression tag. Expression varies depending on the nature of the gene.

**Components:** The ORF clone is ion-exchange column purified and shipped in a 2D barcoded Matrix tube containing 10ug of transfection-ready, dried plasmid DNA (reconstitute with 100 ul of water).

**Reconstitution Method:**

1. Centrifuge at 5,000xg for 5min.
2. Carefully open the tube and add 100ul of sterile water to dissolve the DNA.
3. Close the tube and incubate for 10 minutes at room temperature.
4. Briefly vortex the tube and then do a quick spin (less than 5000xg) to concentrate the liquid at the bottom.
5. Store the suspended plasmid at -20°C. The DNA is stable for at least one year from date of shipping when stored at -20°C.

**RefSeq:** [NM\\_182690.3](#)

**RefSeq Size:** 1111 bp

**RefSeq ORF:** 582 bp

**Locus ID:** 1945

UniProt ID: [P52798](#)

Cytogenetics: 1q21.3

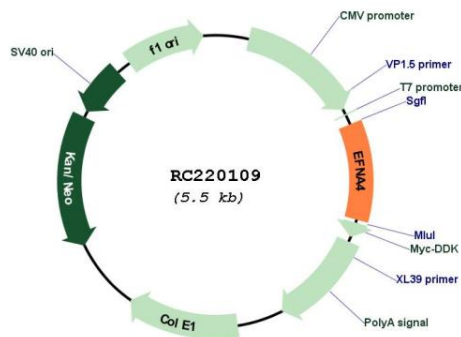
Protein Families: Secreted Protein

Protein Pathways: Axon guidance

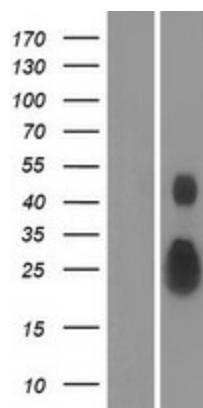
MW: 21.7 kDa

**Gene Summary:** This gene encodes a member of the ephrin (EPH) family. The ephrins and EPH-related receptors comprise the largest subfamily of receptor protein-tyrosine kinases and have been implicated in mediating developmental events, especially in the nervous system and in erythropoiesis. Based on their structures and sequence relationships, ephrins are divided into the ephrin-A (EFNA) class, which are anchored to the membrane by a glycosylphosphatidylinositol linkage, and the ephrin-B (EFNB) class, which are transmembrane proteins. This gene encodes an EFNA class ephrin. Three transcript variants that encode distinct proteins have been identified. [provided by RefSeq, Jul 2008]

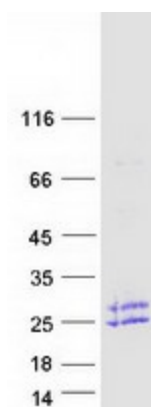
**Product images:**



Circular map for RC220109



Western blot validation of overexpression lysate (Cat# [LY405453]) using anti-DDK antibody (Cat# [TA50011-100]). Left: Cell lysates from untransfected HEK293T cells; Right: Cell lysates from HEK293T cells transfected with RC220109 using transfection reagent MegaTran 2.0 (Cat# [TT210002]).



Coomassie blue staining of purified EFNA4 protein (Cat# [TP320109]). The protein was produced from HEK293T cells transfected with EFNA4 cDNA clone (Cat# RC220109) using MegaTran 2.0 (Cat# [TT210002]).