

Product datasheet for **RC220106**

RNF138 (NM_198128) Human Tagged ORF Clone

Product data:

Product Type: Expression Plasmids
Product Name: RNF138 (NM_198128) Human Tagged ORF Clone
Tag: Myc-DDK
Symbol: RNF138
Synonyms: hNARF; HSD-4; NARF; STRIN
Mammalian Cell Selection: Neomycin
Vector: pCMV6-Entry (PS100001)
E. coli Selection: Kanamycin (25 ug/mL)
ORF Nucleotide Sequence: >RC220106 representing NM_198128
Red=Cloning site Blue=ORF Green=Tags(s)

TTTTGTAATACGACTCACTATAGGGCGGCCGGAATTCGTCGACTGGATCCGGTACCGAGGAGATCTGCC
GCC**CGGATCGCC**

ATGGCCGAGGACCTCTCTGCGGCCACGTCTACACCGAAGATGATTTCTACTGCCCGTCTGTCAAGAGG
TGCTCAAACGCCCGTGCAGACACGGCTGTCAAGAGTAAACATCCACATCTGATAA
CACAGAACTTACCAAGAGAATAAAGTTCTTCTGGTCATCTTTAAAGTGTCCCTGTGTCAAGAA
TCAAATTTACCAGACAGCGTTTACTGGATCACTGTAACAGTAATCACCTATTTAGATAGTTCTGTGA
CATGTCCTATTTGTGTCTCTTCTGGGAGATCCTAGCCAGATTACCAGAAATTTTCGTTAGTCATCT
AAATCAGAGACATCAATTTGATTATGGAGAATTTGTAATCTTCAGCTAGATGAAGAAACCAATACCAA
ACTGCTGTTGAAGAATCTTTCAAGTAAACATC

ACGCGTACGCGGCCGCTCGAGCAGAACTCATCTCAGAAGAGGATCTGGCAGCAAATGATATCCTGGATT
ACAAGGATGACGACGATAAGGTTTAA

Protein Sequence: >RC220106 representing NM_198128
Red=Cloning site Green=Tags(s)
MAEDLSAATSYTEDDFYCPVCQEVLKTPVRTTACQHVNRSETSTSDNTETYQENTSSSGHPTFKCPLCQE
SNFTRQRLLDHCNSNHLFQIVPVTCPICVSLPWGDPSQITRNFVSHLNQRHQFDYGEFVNLQLEDETQYQ
TAVEESFQVNI

TRTRPLEQK**L**ISEEDLAANDILDYKDDDDKV

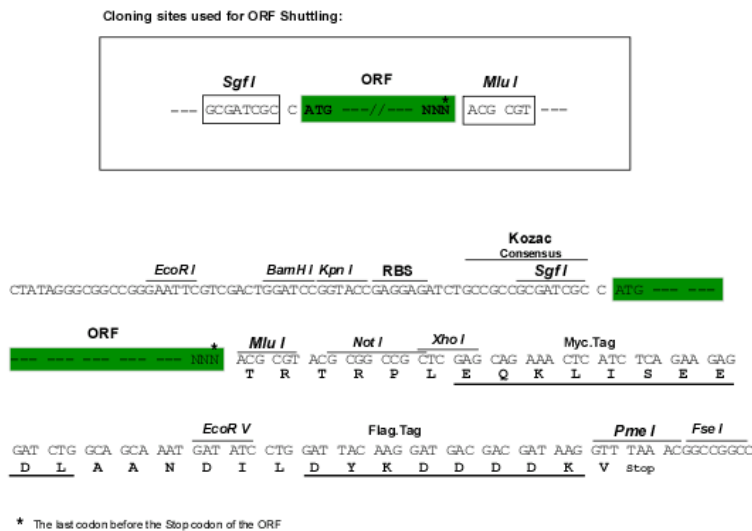
Chromatograms: https://cdn.origene.com/chromatograms/ja1452_e03.zip



[View online >](#)

Restriction Sites: SgfI-MluI

Cloning Scheme:



ACCN: NM_198128

ORF Size: 453 bp

OTI Disclaimer: The molecular sequence of this clone aligns with the gene accession number as a point of reference only. However, individual transcript sequences of the same gene can differ through naturally occurring variations (e.g. polymorphisms), each with its own valid existence. This clone is substantially in agreement with the reference, but a complete review of all prevailing variants is recommended prior to use. [More info](#)

OTI Annotation: This clone was engineered to express the complete ORF with an expression tag. Expression varies depending on the nature of the gene.

Components: The ORF clone is ion-exchange column purified and shipped in a 2D barcoded Matrix tube containing 10ug of transfection-ready, dried plasmid DNA (reconstitute with 100 ul of water).

Reconstitution Method:

1. Centrifuge at 5,000xg for 5min.
2. Carefully open the tube and add 100ul of sterile water to dissolve the DNA.
3. Close the tube and incubate for 10 minutes at room temperature.
4. Briefly vortex the tube and then do a quick spin (less than 5000xg) to concentrate the liquid at the bottom.
5. Store the suspended plasmid at -20°C. The DNA is stable for at least one year from date of shipping when stored at -20°C.

RefSeq: [NM_198128.2](#), [NP_937761.1](#)

RefSeq Size: 2938 bp

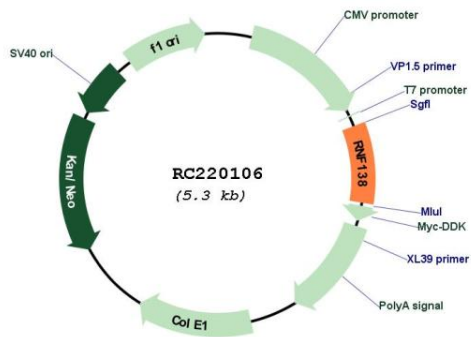
RefSeq ORF: 456 bp

Locus ID: 51444

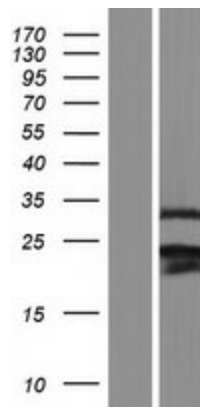
UniProt ID: [Q8WVD3](#)
 Cytogenetics: 18q12.1
 MW: 17.1 kDa

Gene Summary: The protein encoded by this gene contains a RING finger, a motif present in a variety of functionally distinct proteins and known to be involved in protein-DNA and protein-protein interactions. Alternatively spliced transcript variants encoding distinct isoforms have been observed. [provided by RefSeq, Jul 2008]

Product images:



Circular map for RC220106



Western blot validation of overexpression lysate (Cat# [LY405066]) using anti-DDK antibody (Cat# [TA50011-100]). Left: Cell lysates from untransfected HEK293T cells; Right: Cell lysates from HEK293T cells transfected with RC220106 using transfection reagent MegaTran 2.0 (Cat# [TT210002]).