

Product datasheet for **RC220103**

Endothelin 3 (EDN3) (NM_207033) Human Tagged ORF Clone

Product data:

Product Type:	Expression Plasmids
Product Name:	Endothelin 3 (EDN3) (NM_207033) Human Tagged ORF Clone
Tag:	Myc-DDK
Symbol:	Endothelin 3
Synonyms:	ET-3; ET3; HSCR4; PPET3; WS4B
Mammalian Cell Selection:	Neomycin
Vector:	pCMV6-Entry (PS100001)
E. coli Selection:	Kanamycin (25 ug/mL)
ORF Nucleotide Sequence:	>RC220103 representing NM_207033 Red=Cloning site Blue=ORF Green=Tags(s)

TTTTGTAATACGACTCACTATAGGGCGGCCGGAATTCGTCGACTGGATCCGGTACCGAGGAGATCTGCC
GCC**CGATCGCC**

ATGGAGCCGGGGCTGTGGCTCCTTTTCGGGCTCACAGTGACCTCCGCCGAGGATTCGTGCCTTGCTCCC
AGTCTGGGGATGCTGGCAGGCGCGCGTGTCCCAGGCCCCACTGCAGCCAGATCTGAGGGGACTGTGA
AGAGACTGTGGCTGGCCCTGGCGAGGAGACTGTGGCTGGCCCTGGCGAGGGGACTGTGGCCCGACAGCA
CTGCAGGGTCCAAGCCCTGGAAGCCCTGGCAGGAGCAGGCGGCCGAGGGGGCCCTGAGCACCACCGAT
CCAGGGCGCTGCAGTGCTTACCTACAAGGACAAGGAGTGTGTCTACTATTGCCACCTGGACATCATTTG
GATCAAACTCCCGAACAGACGGTGCCTATGGACTGTCCAACACAGAGGAAGCTTCCGGGGCAAGAGG
TCTGCGGGCCACTTCCAGGGAATCTGCAGCTCTCACATCGGCCACACTTGCCTGCGCTTGTGTGGGA
GATATGACAAGGCTGCCTGCACCTTTTGCACCCAACTCTGGACGTCAGCAGACAGGTTGAAGTCAAGGA
CCAACAAAGCAAGCAGGCTTTAGACCTCCACCATCCAAGCTCATGCCCGCAGTGGACTCGCCCTCGCT
CCATCTACCTGCCCGCTGCCTTTTCAGGAAGGAGCCCT

ACGCGTACGCGGGCGCTCGAGCAGAACTCATCTCAGAAGAGGATCTGGCAGCAATGATATCCTGGATT
ACAAGGATGACGACGATAAGGTTTAA



[View online »](#)

Protein Sequence: >RC220103 representing NM_207033
Red=Cloning site Green=Tags(s)

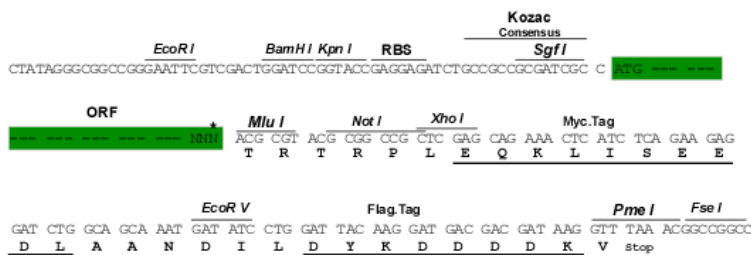
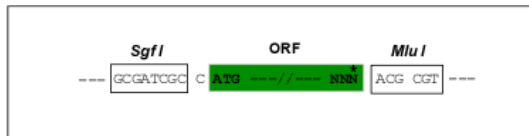
MEPGLWLLFGLTVTSAAGFVPCSQSGDAGRRGVSQAPTAARSEGDCEETVAGPGEETVAGPGEGTVAPTA
 LQGPSPGSPGQEQAAEQAPEHRSRRCTCFTYKDKCEVYCHLDIIWINTPEQTPYGLSNYRGSFRGKR
 SAGPLPGLNLQLSHRPHLRCAVCGRYDKACLHFCTQTLDVSRQVEVKDQSKQALDLHHPKLMPGSGLALA
 PSTCPRCLFQEGAP

TRTRPLEQKLISEEDLAANDILDYKDDDDKV

Restriction Sites: Sgfl-MluI

Cloning Scheme:

Cloning sites used for ORF Shuttling:



ACCN: NM_207033

ORF Size: 672 bp

OTI Disclaimer: The molecular sequence of this clone aligns with the gene accession number as a point of reference only. However, individual transcript sequences of the same gene can differ through naturally occurring variations (e.g. polymorphisms), each with its own valid existence. This clone is substantially in agreement with the reference, but a complete review of all prevailing variants is recommended prior to use. [More info](#)

OTI Annotation: This clone was engineered to express the complete ORF with an expression tag. Expression varies depending on the nature of the gene.

Components: The ORF clone is ion-exchange column purified and shipped in a 2D barcoded Matrix tube containing 10ug of transfection-ready, dried plasmid DNA (reconstitute with 100 ul of water).

Reconstitution Method:

1. Centrifuge at 5,000xg for 5min.
2. Carefully open the tube and add 100ul of sterile water to dissolve the DNA.
3. Close the tube and incubate for 10 minutes at room temperature.
4. Briefly vortex the tube and then do a quick spin (less than 5000xg) to concentrate the liquid at the bottom.
5. Store the suspended plasmid at -20°C. The DNA is stable for at least one year from date of shipping when stored at -20°C.

RefSeq: [NM_207033.3](#)

RefSeq Size: 2617 bp

RefSeq ORF: 675 bp

Locus ID: 1908

UniProt ID: [P14138](#)

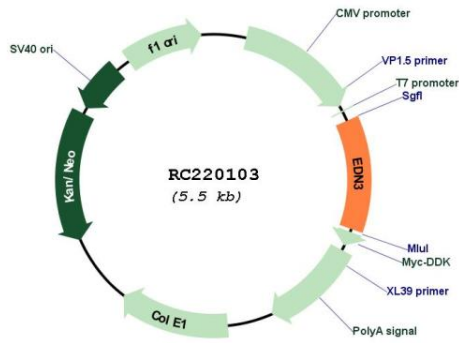
Cytogenetics: 20q13.32

Protein Families: Druggable Genome, Secreted Protein

MW: 21.3 kDa

Gene Summary: The protein encoded by this gene is a member of the endothelin family. Endothelins are endothelium-derived vasoactive peptides involved in a variety of biological functions. The active form of this protein is a 21 amino acid peptide processed from the precursor protein. The active peptide is a ligand for endothelin receptor type B (EDNRB). The interaction of this endothelin with EDNRB is essential for development of neural crest-derived cell lineages, such as melanocytes and enteric neurons. Mutations in this gene and EDNRB have been associated with Hirschsprung disease (HSCR) and Waardenburg syndrome (WS), which are congenital disorders involving neural crest-derived cells. Altered expression of this gene is implicated in tumorigenesis. Alternative splicing results in multiple transcript variants encoding different isoforms. [provided by RefSeq, Oct 2014]

Product images:



Circular map for RC220103