

## Product datasheet for **RC220102**

### Galectin 8 (LGALS8) (NM\_006499) Human Tagged ORF Clone

#### Product data:

Product Type:	Expression Plasmids
Product Name:	Galectin 8 (LGALS8) (NM_006499) Human Tagged ORF Clone
Tag:	Myc-DDK
Symbol:	Galectin 8
Synonyms:	Gal-8; PCTA-1; PCTA1; Po66-CBP
Mammalian Cell Selection:	Neomycin
Vector:	pCMV6-Entry (PS100001)
E. coli Selection:	Kanamycin (25 ug/mL)
ORF Nucleotide Sequence:	>RC220102 representing NM_006499 Red=Cloning site Blue=ORF Green=Tags(s)

TTTTGTAATACGACTCACTATAGGGCGGCCGGAATTCGTCGACTGGATCCGGTACCGAGGAGATCTGCC  
GCC**CGATCGCC**

ATGATGTTGTCCTTAAACAACCTACAGAATATCATCTATAACCCGGTAATCCCGTTTGTGGCACCATTC  
CTGATCAGCTGGATCCTGGAACCTTGGATTGTGATACGTGGGCATGTTCTAGTGACGCAGACAGATTCCA  
GGTGGATCTGCAGAATGGCAGCAGCATGAAACCTCGAGCCGATGTGGCCTTTCATTTCAATCCTCGTTTC  
AAAAGGGCCGGCTGCATTGTTTGAATACTTTGATAAATGAAAAATGGGGACGGGAAGAGATCACCTATG  
ACACGCCCTTCAAAGAGAAAAGTCTTTTGGATCGTGATTATGGTGCTGAAGGACAAATCCAGGTGGC  
TGTAATGGAAAACATACTCTGCTCTATGGCCACAGGATCGGCCAGAGAAAATAGACACTCTGGGCATT  
TATGGCAAAGTGAATATCACTCAATTGTTTTAGCTTCAGCTCGGACTTACAAAGTACCAAGCATCTA  
GTCTGGAAGTACAGAGATAAGTAGAGAAAATGTTCCAAAGTCTGGCAGCCCGAGCTTCTAGTAATAG  
AGGAGGAGACATTTCTAAAATCGCACCCAGAAGTGTCTACACCAAGAGCAAAGATTGACTGTCAATCAC  
ACTTTGACTTGCACAAAATACCACCTATGAACTATGTGTCAAAGAGGCTGCCATTCGCTGCAAGTTGA  
ACACCCCATGGGCCCTGGACGAACTGTCGTCGTTAAAGGAGAAGTGAATGCAATGCCAAAAGCTTTAA  
TGTGACCTACTAGCAGGAAAATCAAAGGATATTGCTCTACACTGAACCCACGCTGAATATTAAGCA  
TTTGTAAGAAATCTTTTCTTTCAGGAGTCTGGGAGAAGAAGAGAAAATATTACCTTTCCCATTTA  
GTCCTGGGATGACTTTGAGATGATAATTTATTGTGATGTTAGAGAATTCAGGTTGACGTAATGGCGT  
ACACAGCCTGGAGTACAAACACAGATTTAAAGAGCTCAGCAGTATTGACACGCTGAAAATTAATGGAGAC  
ATCCACTACTGGAAGTAAGGAGCTGG

**ACGCGT**ACGCGGCCGCTCGAGCAGAAAATCATCTCAGAAGAGGATCTGGCAGCAAATGATATCCTGGATT  
ACAAGGATGACGACGATAAGGTTAA



[View online »](#)

**Protein Sequence:** >RC220102 representing NM\_006499  
Red=Cloning site Green=Tags(s)

MMLSLNQLQNIINYPVPIPVGTIPDQLDPGTLIVIRGHVPSDADRQVDLQNGSSMKPRADVAFFHNPRF  
 KRAGCIVCNTLINEKWGREEITYDTPFKREKSFEIVIMVLKDKFQVAVNGKHTLLYGHRIPEKIDTLGI  
 YGKVNIIHSIGFSFSSDLQSTQASLELEIISRENVPKSGTPQLPSNRGGDISKIAPRTVYTKSKDSTVNH  
 TLTCTKIPPMNYVSKRLPFAARLNTMPMGPGRVTVVKGEVNAVAKSFNVDLLAGKSKDIALHLNPRLNKA  
 FVRNSFLQESWGEEERNITSFPPSPGMYFEMIIYCDVREFKVAVNGVHSLEYKHRFKELSSIDTLEINGD  
 IHLLEVRWS

TRTRPLEQKLISEEDLAANDILDYKDDDDKV

**Chromatograms:** [https://cdn.origene.com/chromatograms/mk8054\\_e12.zip](https://cdn.origene.com/chromatograms/mk8054_e12.zip)

**Restriction Sites:** SgfI-MluI

**Cloning Scheme:**



\* The last codon before the Stop codon of the ORF

**ACCN:** NM\_006499

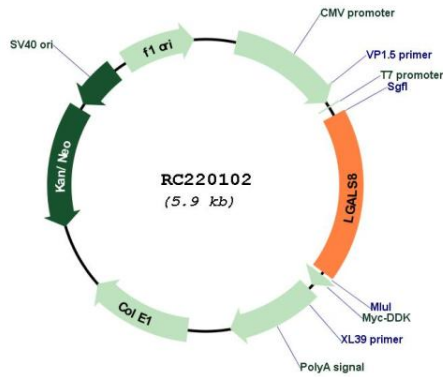
**ORF Size:** 1077 bp

**OTI Disclaimer:** Due to the inherent nature of this plasmid, standard methods to replicate additional amounts of DNA in E. coli are highly likely to result in mutations and/or rearrangements. Therefore, OriGene does not guarantee the capability to replicate this plasmid DNA. Additional amounts of DNA can be purchased from OriGene with batch-specific, full-sequence verification at a reduced cost. Please contact our customer care team at [custsupport@origene.com](mailto:custsupport@origene.com) or by calling 301.340.3188 option 3 for pricing and delivery.

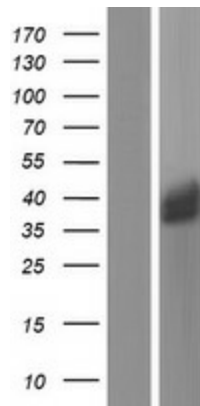
The molecular sequence of this clone aligns with the gene accession number as a point of reference only. However, individual transcript sequences of the same gene can differ through naturally occurring variations (e.g. polymorphisms), each with its own valid existence. This clone is substantially in agreement with the reference, but a complete review of all prevailing variants is recommended prior to use. [More info](#)

<b>OTI Annotation:</b>	This clone was engineered to express the complete ORF with an expression tag. Expression varies depending on the nature of the gene.
<b>Components:</b>	The ORF clone is ion-exchange column purified and shipped in a 2D barcoded Matrix tube containing 10ug of transfection-ready, dried plasmid DNA (reconstitute with 100 ul of water).
<b>Reconstitution Method:</b>	<ol style="list-style-type: none"><li>1. Centrifuge at 5,000xg for 5min.</li><li>2. Carefully open the tube and add 100ul of sterile water to dissolve the DNA.</li><li>3. Close the tube and incubate for 10 minutes at room temperature.</li><li>4. Briefly vortex the tube and then do a quick spin (less than 5000xg) to concentrate the liquid at the bottom.</li><li>5. Store the suspended plasmid at -20°C. The DNA is stable for at least one year from date of shipping when stored at -20°C.</li></ol>
<b>RefSeq:</b>	<a href="#">NM_006499.4</a>
<b>RefSeq Size:</b>	2996 bp
<b>RefSeq ORF:</b>	1080 bp
<b>Locus ID:</b>	3964
<b>UniProt ID:</b>	<a href="#">O00214</a>
<b>Cytogenetics:</b>	1q43
<b>Domains:</b>	Gal-bind_lectin
<b>MW:</b>	40.2 kDa
<b>Gene Summary:</b>	<p>This gene encodes a member of the galectin family. Galectins are beta-galactoside-binding animal lectins with conserved carbohydrate recognition domains. The galectins have been implicated in many essential functions including development, differentiation, cell-cell adhesion, cell-matrix interaction, growth regulation, apoptosis, and RNA splicing. This gene is widely expressed in tumoral tissues and seems to be involved in integrin-like cell interactions. Alternatively spliced transcript variants encoding different isoforms have been identified. [provided by RefSeq, Jul 2008]</p>

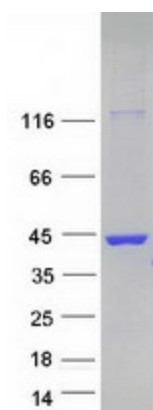
Product images:



Circular map for RC220102



Western blot validation of overexpression lysate (Cat# [LY416600]) using anti-DDK antibody (Cat# [TA50011-100]). Left: Cell lysates from untransfected HEK293T cells; Right: Cell lysates from HEK293T cells transfected with RC220102 using transfection reagent MegaTran 2.0 (Cat# [TT210002]).



Coomassie blue staining of purified LGALS8 protein (Cat# [TP320102]). The protein was produced from HEK293T cells transfected with LGALS8 cDNA clone (Cat# RC220102) using MegaTran 2.0 (Cat# [TT210002]).