

## Product datasheet for **RC220095**

### **CAMK2N1 (NM\_018584) Human Tagged ORF Clone**

#### Product data:

**Product Type:** Expression Plasmids  
**Product Name:** CAMK2N1 (NM\_018584) Human Tagged ORF Clone  
**Tag:** Myc-DDK  
**Symbol:** CAMK2N1  
**Synonyms:** PRO1489  
**Mammalian Cell Selection:** Neomycin  
**Vector:** pCMV6-Entry (PS100001)  
**E. coli Selection:** Kanamycin (25 ug/mL)  
**ORF Nucleotide Sequence:** >RC220095 representing NM\_018584  
**Red=Cloning site Blue=ORF Green=Tags(s)**

TTTTGTAATACGACTCACTATAGGGCGCCGGGAATTCGTCGACTGGATCCGGTACCGAGGAGATCTGCC  
GCC**CGATCGCC**

**ATGTCGGAGGTGCTGCCCTACGGCGACGAGAAGCTGAGCCCTACGGCGACGGCGGCGACGTGGCCAGA  
TCTTCTCTGCCGCTGCAGGACACCAACAACCTCTTCGGCGCCGGCAGAACAGCGGCCGCCAAGCT  
GGGCCAGATCGGCCGGAGCAAGCGGTTGTTATTGAAGATGATAGGATTGATGACGTGCTGAAAAATATG  
ACCGACAAGGCACCTCTGGTGTCT**

**ACGCGTACGCGGCCGCTCGAGCAGAACTCATCTCAGAAGAGGATCTGGCAGCAAATGATATCTGGATT  
ACAAGGATGACGACGATAAGGTTTAA**

**Protein Sequence:** >RC220095 representing NM\_018584  
**Red=Cloning site Green=Tags(s)**  
  
MSEVLPYGDEKLSFYGDGVDVQIFSCRLQDTNFFGAGQNKRPKLGQIGRSKRVIEDDRIDDLKNNM  
TDKAPPGV

**TRTRPLEQKLISEEDLAANDILDYKDDDDKV**

**Chromatograms:** [https://cdn.origene.com/chromatograms/mk6487\\_c05.zip](https://cdn.origene.com/chromatograms/mk6487_c05.zip)

**Restriction Sites:** Sgfl-MluI

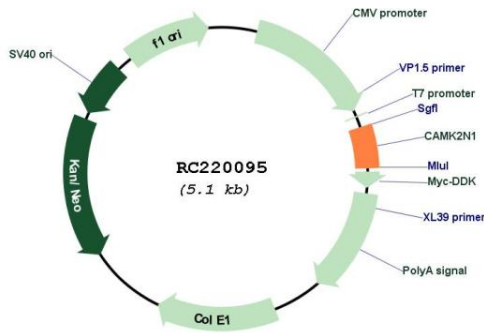


[View online »](#)

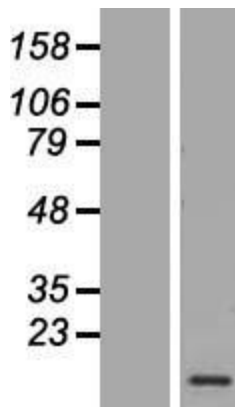


**UniProt ID:** [Q7Z7I9](#)  
**Cytogenetics:** 1p36.12  
**Protein Families:** Druggable Genome  
**MW:** 8.4 kDa  
**Gene Summary:** Potent and specific inhibitor of CaM-kinase II (CAMK2).[UniProtKB/Swiss-Prot Function]

**Product images:**



Circular map for RC220095



Western blot validation of overexpression lysate (Cat# [LY412994]) using anti-DDK antibody (Cat# [TA50011-100]). Left: Cell lysates from untransfected HEK293T cells; Right: Cell lysates from HEK293T cells transfected with RC220095 using transfection reagent MegaTran 2.0 (Cat# [TT210002]).