

Product datasheet for RC220092

WDR52 (CFAP44) (NM_018338) Human Tagged ORF Clone

Product data:

Product Type:	Expression Plasmids
Product Name:	WDR52 (CFAP44) (NM_018338) Human Tagged ORF Clone
Tag:	Myc-DDK
Symbol:	WDR52
Synonyms:	SPGF20; WDR52
Mammalian Cell Selection:	Neomycin
Vector:	pCMV6-Entry (PS100001)
E. coli Selection:	Kanamycin (25 ug/mL)
ORF Nucleotide Sequence:	>RC220092 ORF sequence Red=Cloning site Blue=ORF Green=Tags(s)

TTTTGTAATACGACTCACTATAGGGCGGCCGGAATTCGTCGACTGGATCCGGTACCGAGGAGATCTGCC
GCC**CGATCGCC**

ATGAAGGAACCAGATGATCAGGATACTGATGGGGAGAAATCAGTTACATCAAAGAGTGATGGGAAGAAGT
CTCTGAGGTCTTCTAAATCAGAATCAAGATCTCCTGTTCAAGAAGATAACACATTTTTAGAAGATGACAC
AGATGAAACATTTACCAAAGGGGAAGGATCATATTTAGAAGAAGACTCAGATGAGGAACGTTTGGGAAGGA
AGTTTGAGTTCATTTAGTATGGTGATTTGCAAAGCACTACAGTACCTCAGCAAACCCCTGCTCCAGCTG
TGAAGAAGCAGAGGAGGAAGTTAAGAAGAAAATATCAGAGAGCTTCTTCTATGATTATATGGAGCTTGC
TTCGATGCCTTTTGTGACTCTGGATTCAAACATACCACTGGATCTTCTCACACTTGATACATCTTTTGGT
TATGACTGTAGAAAGCGAGCCAACCTACAACCTTCTGGACGACAGTATCGCCATATACATAGCTGGGAACC
AACTGATCTTTCTGAATTTGAAAACCAAGGAACAGATCTACCTGCGAAGTAGCAGTGGTGAAGGAATTGG
CGTCATTGGGGTTCATCCACATAAACTTATTTACAGTAGCTGAAAAAGGGAGTTTTCCAGATATTATC
ATCTATGAATATCCTTCTCTGAGACCATACAGAGTCCCTCGAGATGGGACTGAGAAGGGATATGCTTATG
TGGACTTTAACTACAGCGGTAACCTGCTGGCCTCTGTTGGTAGTAACCCGACTACACTGACTATCTG
GAAGTGGAAAGAACAACCCATACTAAGGACAAAAGCTTTTTCTCAGGAAGTTTTTAAGGTTACTTTT
AATCCTGATAAGGAAGAGCAGCTTACTACATCGGGATCAGGCCACATCAAGTTCTGGGAAATGGCTTTTA
CGTTCACCGGTCTCAAGCTGCAGGGATCACTAGGTCGATTTGGCAAACAATCACTACTGATATAGAAGG
CTACATGGAGCTCCAGATGGGAAGGTGCTCTCAGGGTCAGAATGGGGCAACATGCTGCTTTGGGAAGGT
GGTCTGATCAAAGTGGAGCTCTGTGAGGGACAAGCAAGTCATGTCAAAATGGTCCCATTAACCAGATAA
TGCTGTATGAGGGTGAAGTTATCACTGTTGGGTCAGATGGATATGTTAGGATATGGGATTTTGGACAAT
AGACACTGCTGATGTAATAGATGAGACTGGATTGTTGGAGATTGAGCCTATTAATGAACTCAAGTAGAC
AAGAATGTGAATCTTCTCTATGATAAAAATGAATGAACTGGAATAACTTTTTGGTTGGCTCAGGATG
CCAATGGAGCCATATGGAAGCTTGACCTTAGTTTTTCAAATATTACCCAGGACCCAGAATGCCTCTTCTC
CTTCCATTCTGGAGCTATTGAAGCGTGGCTGTTTCTCCTCTCACTTATCTCATGCCACAACCTGCCTTG



[View online »](#)

GACTGCTCTGTTGCAATCTATGATTTTGTAGCAAACTCCTTTGGCCAGATGAAATTCAAACAAGGAG
 GTACTGCCCTTGTGGGTACCCCGAATGGTAACTTCACTGGAGCACAATTTAGTAGGATTTGAAGA
 TGGAGTTGTTGCAATCTTGAACTTATGATCCAAAAGGGCTCACGATTTTTCGGGGACGGAAGAAAATT
 TTGGATGCTGATATTCAGTTGAAACAGGTTTTCAAACCCACTGCTTGTGCTACTGCTTTAGCTTATG
 AACGTGATGGGAAAATCTAGCCACAGGGAGTAAAGATCAAACGTTTTCTTCTTGAAGTGAAAGGGA
 TTATAAGCCGATTGGTTATATTAATACTCCTGGACCTGTGTGTCAGTTAATGTGGTCTCCCATGTCTCAT
 CCTGAAAGTACTTTACTAATTATCTGTGAAAATGGCTATATTCTTGAAGCTCCACTTCAACCATAAAGC
 AAGAAGAGGATGATCATGATGTAGTCTCCTATGAAATCAAAGACATGTGCATAAAATGTTCCATTTTTTC
 AAGTGTCAAATCTAAGATTCTGAGATTAATAGAAATTGAAAAGAGGGAGAGACAAAGGGAGTTGAAGGAG
 AAAATAAGGGAAGAAAGGAGGAACAAGCTAGCAGCAGAGATGGGAGAAGATGGAGAAAAAGAATTCAGG
 AGGAGGAAGAGGAGAAAGAGGAGGAGGAGGAGGAAGAAGGCCATTACCTGAAATATTTATCCGTCAAC
 CCCCTCTCCATCCTCTGTGGATTTTACTCAGAGCCAGGGAAGTTCTGGGTTTCTTTGGTGGCTATGAT
 TCTGGTTTTCTATCACTGTGAGTTCCCCCTTGTGATGAAAGCAGTGATTTCAAAGAACAAAAGATG
 AACCTATTGATGTCGGTATCTTGGGATACAGAGGACAATCCCATCAAACATCACTTTCAACATTAA
 CAAAGTTATGATGTTTTGTGGAATGAAAATGGAGCAATTCGAGTCTATGCCTAAATCAAATGATCCT
 TCATTGACCAGTTTGGTGGACTACTGGCACTTCAATATGCATGACAATAATTATGGATGATTTAAAAGTA
 TTGCTAATAGCTTTGATGATCGTTTCTTGGTGGCTGCTGGAGCAGATGGCAATATCTTTGTTTTCAACAT
 TTTTTCTGAATTTATGCTAAGGAAAGACATGAAGGCCAAAGTTCCATCTCCAGGTTTGAATTGAAACA
 GAGCCAATTCAGAAGACATTGAAGATCCCAAAGCCTACAGTATCGAGAATGCTAGGAGAAAAAGAGAAC
 ATGACAAGTTAATGAAAGAAGTGGGAGAAAATAAGGCACGGAAGAGAGAGCAAATCAAAGCTTTGAGGAG
 TGAATTTGTAATCTATTAGAAATGAATGAAAATTACCAAAGCATATGCAGTTTAAACGAACAGTAAGC
 CTAATA

ACGCGTACGCGGCCGCTCGAGCAGAACTCATCTCAGAAGAGGATCTGGCAGCAAATGATATCCTGGATT
 ACAAGGATGACGACGAT AAGGTTTAA

Protein Sequence:

>RC220092 protein sequence
 Red=Cloning site Green=Tags(s)

MKEPDDQDTEGKSVTSKSDGKSLRSSKSESRSPVQEDNTFLEDDTDEFTKGEYSYLEEDSDEERLEG
 SLSSFQYGDQLQSTTVPQQTAPAVEEAEEEEVKKKISESFFYDYMELASMPFVTLDSNIPLDLLTLVHSFG
 YDCRKRANLQLLDDSIAYIYIAGNQLIFLNLKTKEQIYLRSSSGEGIGVIGVHPHKTYFTVAEKGSFPDII
 IYEYPSLRPYRVLRDGTEKGYAYVDFNYSNLLASVGSNPDYTLTIWNWKEEQILRTKAFSQEVFKVTF
 NPDKEEQLTTSGSGHIKFWEMAFFTGLKLQGS LGRFGKITTTDIEGYMELPDGKVL SGSEWGNMLLWEG
 GLIKVELCRGTSK SCHNGPINQIMLYEGEVITVGS DGYVRIWDFETIDTADVIDETGLLEIEPINELQVD
 KNVNLFMSIKMNETGNNFWLAQDANGAIWKLDL SFSNITQDPECLFSFHSGAIEAVAVSPLTYLMATTAL
 DCSVRIYDFASKTPLAQMKFKQGGTALVWVPRMVNFTGAQII VGFEDGVVRIELELYDPKGLTIFAGRKKI
 LDADIQLKQVFKPHTACVTALAYERDGEILATGSKDQTVFFFEEVERDYKPIGYINTPGPVCQLMWS PMSH
 PESTLLIICENGYILEAPLPTIKQEEDDHDVVSYEIKDMCIKCFHFSSVKSKILRLIEIEKRERQRELKE
 KIREERRNKLAAEMGEDGEKEFQEEEEEEEEEEEEPELPEIFIPSTPSPILCGFYSEPGKFWVSLGGYD
 SGFLYHCFPPCDESSDFKEQKDEPIDVRYLADTEDNPIQTITFNINKVMMFCGMKNGAIRVYVLNQNDP
 SLTSLVDYWHFMHDNNGYCIKSIANSFDDRFLVTAGADGNI FVFNIFSEFMLRKDMKAKVSPRFGIET
 EPIPEDIEDPKAYSIENARRKREHKLMKEVGEIKARKREQIKALRSEFCNLLEMNEKLPKHMQFKRTVSLI

TRTRPLEQKLI SEEDLAANDILDYKDDDDKV

Chromatograms:

https://cdn.origene.com/chromatograms/mk6602_g12.zip

Restriction Sites:

Sgfl-Mlul

Cloning Scheme:


ACCN: NM_018338

ORF Size: 2946 bp

OTI Disclaimer: The molecular sequence of this clone aligns with the gene accession number as a point of reference only. However, individual transcript sequences of the same gene can differ through naturally occurring variations (e.g. polymorphisms), each with its own valid existence. This clone is substantially in agreement with the reference, but a complete review of all prevailing variants is recommended prior to use. [More info](#)

OTI Annotation: This clone was engineered to express the complete ORF with an expression tag. Expression varies depending on the nature of the gene.

Components: The ORF clone is ion-exchange column purified and shipped in a 2D barcoded Matrix tube containing 10ug of transfection-ready, dried plasmid DNA (reconstitute with 100 ul of water).

- Reconstitution Method:**
1. Centrifuge at 5,000xg for 5min.
 2. Carefully open the tube and add 100ul of sterile water to dissolve the DNA.
 3. Close the tube and incubate for 10 minutes at room temperature.
 4. Briefly vortex the tube and then do a quick spin (less than 5000xg) to concentrate the liquid at the bottom.
 5. Store the suspended plasmid at -20°C. The DNA is stable for at least one year from date of shipping when stored at -20°C.

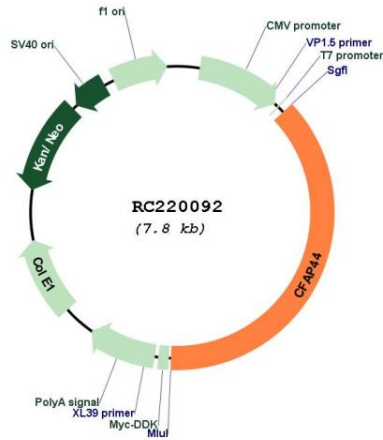
RefSeq: [NM_018338.3](#), [NP_060808.2](#)

RefSeq Size: 3281 bp

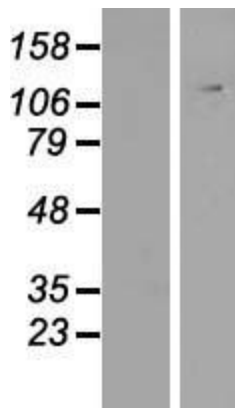
RefSeq ORF: 2949 bp

Locus ID: 55779
UniProt ID: [Q96MT7](#)
Cytogenetics: 3q13.2
MW: 111.7 kDa
Gene Summary: Flagellar protein involved in sperm flagellum axoneme organization and function. [UniProtKB/Swiss-Prot Function]

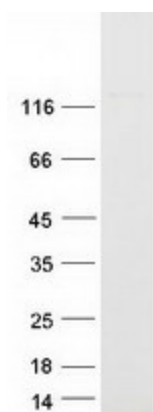
Product images:



Circular map for RC220092



Western blot validation of overexpression lysate (Cat# [LY413131]) using anti-DDK antibody (Cat# [TA50011-100]). Left: Cell lysates from untransfected HEK293T cells; Right: Cell lysates from HEK293T cells transfected with RC220092 using transfection reagent MegaTran 2.0 (Cat# [TT210002]).



Coomassie blue staining of purified CFAP44 protein (Cat# [TP320092]). The protein was produced from HEK293T cells transfected with CFAP44 cDNA clone (Cat# RC220092) using MegaTran 2.0 (Cat# [TT210002]).