

Product datasheet for **RC220087**

XKR9 (NM_001011720) Human Tagged ORF Clone

Product data:

Product Type:	Expression Plasmids
Product Name:	XKR9 (NM_001011720) Human Tagged ORF Clone
Tag:	Myc-DDK
Symbol:	XKR9
Synonyms:	XRG9
Mammalian Cell Selection:	Neomycin
Vector:	pCMV6-Entry (PS100001)
E. coli Selection:	Kanamycin (25 ug/mL)
ORF Nucleotide Sequence:	>RC220087 representing NM_001011720 Red=Cloning site Blue=ORF Green=Tags(s)

TTTTGTAATACGACTCACTATAGGGCGCCGGGAATTCGTCGACTGGATCCGGTACCGAGGAGATCTGCC
GCC**CGATCGCC**

ATGAAATATACTAAACAGAATTTTATGATGTCAGTTCTTGGCATTATAATCTACGTAACCTGATTTAATTG
TGGACATATGGGTATCTGTCAGATTTTCCATGAAGGACAGTATGTTTTAGTGTCTTAGCGTTAAGCTT
TATGCTTTTTGGAACACTGTGGCTCAGTGTATTAGTTATTCTTGGTTCAAGGCTGATTTAAAGAAAGCA
GGCCAAGAAAGTCAGCATTGTTTTCTTCTACTTCATTGCTTGCAAGGAGGAGTTTTACAAGGTATTGGT
TTGCCTTAAAAAGGGTTACCATGCAGCTTTAAATATGACAGCAATACTAGTAACCTCGTGAAGAACA
AATTGATCTACATAAAGAAGTTATAGATAGAGTACTGATTTGAGCATGCTCAGACTATTTGAGACCTAC
CTGGAAGGCTGCCACAACCTTATCTTCAACTCTACATCTTCTGGAGCATGGACAAGCGAATTTAGTC
AGTATGCGGCCATCATGGTCTCTTGCTGTGCTATTTCTTGGTCAACTGTTGATTCAAGTAGCTTTAAG
AAAATCCTTGCCTGACAAAAAGCTTCTAATGGATTATGTCCCAAAATCACATATCTCTTTACAAGTTG
TTACATTATTATCGTGGATGCTGAGTGTGACTTCTACTATTCTTAAATGTTAAGATTGCTTTATTTCT
TGTTGTTATTTCTTGGTTGTTAGGTATAATATGGGCATTTAAAAACAACACCCAGTTTTGTAAGTTGAT
AAGTATGGAATCTTATATAGGATTGTTGTTGGATTCACTTCTTACATTTTTAATATTAAGGGA
CAGAATACCAAGTCCAATGTCTTGTATTATATTGTTAGGACTGGGCACTTTGGGATATTGACTG
TATTCTGGGTTTGCCCTCACTATTTTAAATCCAGACTATTTTATACCTATCAGTATAACTATAGTTCT
TACTCTTCTTCTGGAATCTTTTTCTTATTGTTTATTATGGGAGTTTTACCCAAAACAGAAGTGCAGAA
ACAAAATGTGATGAAATTGATGGAAAACAGTTCTAAGAGAATGTAGAATGAGATATTTCTAATGGAA

ACGCGTACGCGGCCGCTCGAGCAGAAACTCATCTCAGAAGAGGATCTGGCAGCAATGATATCCTGGATT
ACAAGGATGACGACGATAAGGTTAA



[View online »](#)

Protein Sequence: >RC220087 representing NM_001011720
 Red=Cloning site Green=Tags(s)

MKYTKQNFMMSVLGIIIVYVDLIVDIWVSVRFFHEGQYVFSALALSFMLFGTLVAQCFSYSWFKADLKKA
 QQESQHCFLLLHCLQGGVFTRYWFALKRGYHAAFKYDSNTSNFVEEQIDLHKEVIDRVTDLSMLRLFETY
 LEGCPQLILQLYILLEHGQANFSQYAAIMVSCCAISWSTVDYQVALRKS L PDKKLLNGLCPKITYLFYKL
 FTLLSWMLSVVLLLFLNVKIALFLLLFLWLLGIWAFKNNTQFCTCISMEFLYRIVVGFILIFTFFNIKG
 QNTKCPMSCYYIVRVLGTGLGILTVFVWCPLTIFNPDYFIPISITIVLTLLLGILFLIVYYGSFHPNRSAE
 TKCDEIDGKPVLERCRMRYFLME

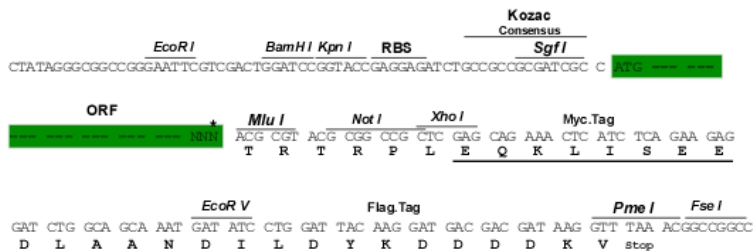
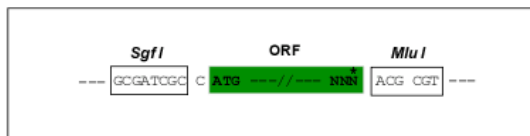
TRTRPLEQKLISEEDLAANDILDYKDDDDKV

Chromatograms: https://cdn.origene.com/chromatograms/ja1293_g03.zip

Restriction Sites: SgfI-MluI

Cloning Scheme:

Cloning sites used for ORF Shuttling:



* The last codon before the Stop codon of the ORF

ACCN: NM_001011720

ORF Size: 1119 bp

OTI Disclaimer: The molecular sequence of this clone aligns with the gene accession number as a point of reference only. However, individual transcript sequences of the same gene can differ through naturally occurring variations (e.g. polymorphisms), each with its own valid existence. This clone is substantially in agreement with the reference, but a complete review of all prevailing variants is recommended prior to use. [More info](#)

OTI Annotation: This clone was engineered to express the complete ORF with an expression tag. Expression varies depending on the nature of the gene.

Components: The ORF clone is ion-exchange column purified and shipped in a 2D barcoded Matrix tube containing 10ug of transfection-ready, dried plasmid DNA (reconstitute with 100 ul of water).

- Reconstitution Method:**
1. Centrifuge at 5,000xg for 5min.
 2. Carefully open the tube and add 100ul of sterile water to dissolve the DNA.
 3. Close the tube and incubate for 10 minutes at room temperature.
 4. Briefly vortex the tube and then do a quick spin (less than 5000xg) to concentrate the liquid at the bottom.
 5. Store the suspended plasmid at -20°C. The DNA is stable for at least one year from date of shipping when stored at -20°C.

RefSeq: [NM_001011720.2](#)

RefSeq Size: 3191 bp

RefSeq ORF: 1122 bp

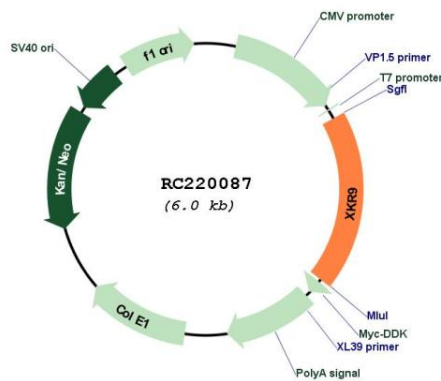
Locus ID: 389668

UniProt ID: [Q5GH70](#)

Cytogenetics: 8q13.3

MW: 43.2 kDa

Product images:



Circular map for RC220087