

Product datasheet for **RC220086**

ARHGEF38 (NM_017700) Human Tagged ORF Clone

Product data:

Product Type: Expression Plasmids
Product Name: ARHGEF38 (NM_017700) Human Tagged ORF Clone
Tag: Myc-DDK
Symbol: ARHGEF38
Mammalian Cell Selection: Neomycin
Vector: pCMV6-Entry (PS100001)
E. coli Selection: Kanamycin (25 ug/mL)
ORF Nucleotide Sequence: >RC220086 ORF sequence
 Red=Cloning site Blue=ORF Green=Tags(s)

TTTTGTAATACGACTCACTATAGGGCGGCCGGAATTCGTCGACTGGATCCGGTACCGAGGAGATCTGCC
 GCC**CGATCGCC**

ATGGAGCCAAAGAAGCCACTGGGAAAGAAAACATGGTCACCAAGAAAAAGAATCTGGCCTTCTTGAGGT
 CTAGACTCTATATGCTGGAGAGAAGGAAGACTGACACTGTGGTTGAGAGCAGTGTCTCTGGGACCCTC
 TGGCACCTTGAGGAGGAGCCAATCTGACAGGACCGAATAACAACGAAATTACAAGAAAAGATGACTCCA
 CAGGGTGAGTGTCTGTAGCTGAGACCTTAACCCAGAGGAAGAGCATCATATGAAGAGGATGATGGCAA
 AGCGGAAAAGATCATTAAAGGAGCTGATACAGACAGAAAAGGATTATCTCAATGATCTAGAGCTGTGTGT
 TAGGGAAGTGGTTCAGCCCTGAGAAATAAAAAGACTGATAGGCTGGATGTGGATAGCTTGTAGCAAC
 ATTGAGTCCGTGCATCAGATATCAGCCAAGCTGCTGTCATTGTTGGAAGAGGCCACAACAGACGTGGAAC
 CGGCCATGCAAGTAATTGGAGAAGTATTCTTGAGATTAAAGGGCCACTGGAAGATATTTATAAAATCTA
 CTGCTATCACCATGATGAAGCACATAGTATACTGGAGTCTATGAAAAGGAAGAAGAGCTGAAGGAACAT
 TTGAGCCACTGTATCCAGTCCTTAAAG

ACGCGTACGCGGCCGCTCGAGCAGAAACTCATCTCAGAAGAGGATCTGGCAGCAATGATATCTGGATT
 ACAAGGATGACGACGATAAGGTTTAA

Protein Sequence: >RC220086 protein sequence
 Red=Cloning site Green=Tags(s)

MEPKEATGKENMVTKKKLAFLRSRLYMLERRKTDVVESVSGDHSGLRRSQSDRTEYNQKLQEKMT
 QGECVAETLTPEEEHMKRMMAKREKIIKELIQTEKDYLNDELVCVREVVQPLRNKKTDRLDVDSLFSN
 IESVHQISAKLLSLLLEATTDVPEAMQVIGEVFLQIKGPLEDIYKIYCYHHDEAHSILESYEKEEELKEH
 LSHCIQSLK

TRTRPLEQKLISEEDLAANDILDYKDDDDKV



[View online »](#)

Chromatograms: https://cdn.origene.com/chromatograms/mk6447_d02.zip

Restriction Sites: SgfI-MluI

Cloning Scheme:



ACCN: NM_017700

ORF Size: 657 bp

OTI Disclaimer: The molecular sequence of this clone aligns with the gene accession number as a point of reference only. However, individual transcript sequences of the same gene can differ through naturally occurring variations (e.g. polymorphisms), each with its own valid existence. This clone is substantially in agreement with the reference, but a complete review of all prevailing variants is recommended prior to use. [More info](#)

OTI Annotation: This clone was engineered to express the complete ORF with an expression tag. Expression varies depending on the nature of the gene.

Components: The ORF clone is ion-exchange column purified and shipped in a 2D barcoded Matrix tube containing 10ug of transfection-ready, dried plasmid DNA (reconstitute with 100 ul of water).

Reconstitution Method:

1. Centrifuge at 5,000xg for 5min.
2. Carefully open the tube and add 100ul of sterile water to dissolve the DNA.
3. Close the tube and incubate for 10 minutes at room temperature.
4. Briefly vortex the tube and then do a quick spin (less than 5000xg) to concentrate the liquid at the bottom.
5. Store the suspended plasmid at -20°C. The DNA is stable for at least one year from date of shipping when stored at -20°C.

RefSeq: [NM_017700.1](#), [NP_060170.1](#)

RefSeq Size: 1453 bp

RefSeq ORF: 660 bp

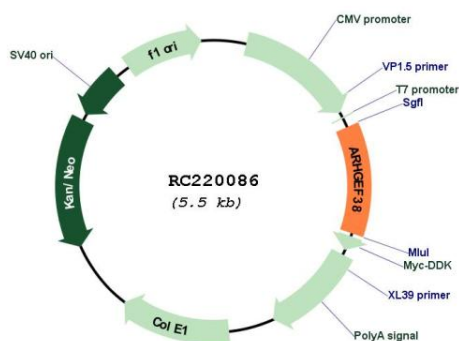
Locus ID: 54848

UniProt ID: [Q9NXL2](#)

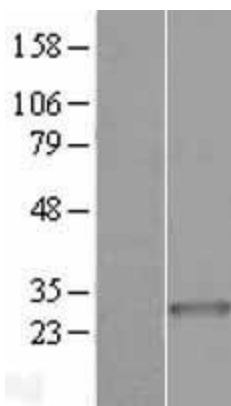
Cytogenetics: 4q24

MW: 25.5 kDa

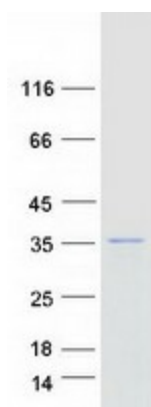
Gene Summary: May act as a guanine-nucleotide releasing factor.[UniProtKB/Swiss-Prot Function]

Product images:


Circular map for RC220086



Western blot validation of overexpression lysate (Cat# [LY413609]) using anti-DDK antibody (Cat# [TA50011-100]). Left: Cell lysates from untransfected HEK293T cells; Right: Cell lysates from HEK293T cells transfected with RC220086 using transfection reagent MegaTran 2.0 (Cat# [TT210002]).



Coomassie blue staining of purified ARHGEF38 protein (Cat# [TP320086]). The protein was produced from HEK293T cells transfected with ARHGEF38 cDNA clone (Cat# RC220086) using MegaTran 2.0 (Cat# [TT210002]).