

Product datasheet for **RC220081**

CCDC46 (CEP112) (NM_145036) Human Tagged ORF Clone

Product data:

Product Type:	Expression Plasmids
Product Name:	CCDC46 (CEP112) (NM_145036) Human Tagged ORF Clone
Tag:	Myc-DDK
Symbol:	CCDC46
Synonyms:	CCDC46; MACOCO
Mammalian Cell Selection:	Neomycin
Vector:	pCMV6-Entry (PS100001)
E. coli Selection:	Kanamycin (25 ug/mL)



[View online »](#)

ORF Nucleotide Sequence:

>RC220081 representing NM_145036
 Red=Cloning site Blue=ORF Green=Tags(s)

TTTTGTAATACGACTCACTATAGGGCGGCCGGAATTCGTCGACTGGATCCGGTACCGAGGAGATCTGCC
 GCC**CGGATCGCC**

ATGGAAGTGGGAAGTGAAGAAGAAAAATGGGAGAAGCTGGATGCAGAATTTGATCACTTTGTGGTTGATA
 TGAAGCCCTTTGTTCTAAAATTACCTCATAGGACAGAACGGCAGAGGTGTGCTCTTTGGATTAGAAAAGCT
 GTGCGAACCTTCAGGAACAGGTGCGAATAATGGGGAGGAAGAATCGGAACCTGTATGCAAAATTTGTTA
 TTGCATATGCTTAAACGAGGTGCGCTTGAAGGCCCTTTTACACACCGACCTGAACCCGGGACACTAAAAA
 TTCTACCTTCATACATGTCCATCTATTTTGGATGAACCAATCCAGCAGGACAAAAGTTCAAGCCGAGA
 GGGATTACCAGCCTGGTACTGGGTGAGCTGGAGACAAGTGAACACAAAATTAATGAATCATGGAAACTC
 TCTTCTGGAGAAGATAACACTTTAGTACAGTCCCACTGATGTCTACAGCAGGGAACAGTACACTGGGA
 AGCTCCGAGTGGATCACACTCCTTGGTCCAACCTCACAGAGAAGATGGACAAAAATTACCCCAAAGAT
 TTGTGAAGTTTATTCGAAAAATCTCCTGTTTCTTTGGATGATAGTGACATTGAAGCTCGCCTTAATAGT
 TGGAACTTTGGGATAGAAAAATCCTCGATACCTGAGACAGAAGCCTATCCAGTTTCTCTGATGACACCGA
 AATTCAGCCTGAGAAAAATCCAGCAGTTTCCATGATGATCAATTTCTCTCTCGAATACGTGAGAAAAGCT
 GGACATGAAAAACAAAATGATGGAAGCTAAATTTTATGAAGAAAAGCTTAACTGCAACGAAAAATGAT
 GCTGATGTTTCAAGATTTTAGAAAAGAAAGTAAATGAAATAGAAGAACTGAAAACCTTTATACAGGAGTA
 AACACATGAAACTGAAGAGACTATTAGAAAGCTTGAAGAAAAGTTTCAAGCACTGATACGTGACTGTCA
 AGTTATCAGAGAGACTAAAGAAGACCAGATTGCAGAGCTGAAAAAGATATGTGAACAAAGTACGGAATCT
 CTAATAATGACTGGGAAAAAAGCTTCAAGAAATGCTGTAGCAGAAATGGAACAGGAAAAGTTTGTCTTC
 AAAAGCAACACTGAAAAACATCAAGAAATGCTTGGAGTACAAAATGTGCGTCTGAATAAAATGGAGAG
 TGAATACATGGCGCAACACAGTCCACAACCACATGATCAAAGAACTGGAGGCCCGTGTCCAGCAGCTG
 ACTGGAGAAGCAGAGAACAGTAATTTACAGAGGCAAGAAATTAATTCAGAAAAAGCAGAACTTGAAAGAT
 GTTACCAGATAACGTGTAGTGAATTACAAGAAGTAAAGGCAAGGCGTAACACACTGCATAAAGAGAAGGA
 CCATCTTGTAATGATTATGAGCAAAACATGAACTGTTACAACCAAATATGATGCTGATATAAACCTT
 CTAACAAGAACATGCTCTTTCAGCTTCAAGGCATCTAGTATGATTGAAGAATTAGAGCAGAATGTCT
 GTCAATTAACAGCAGTTACAGGAATCAGAACTTCAAAGAAAGCAACAACTAAGGGATCAAGAAAAATA
 GTTTTCAAGTGGAGAAAAGTCAATTAACACATCTATGAAAAAAGGCTCATGACTTGCAGAGTGAACCT
 GATAAAGGAAAAGATACTCAAAGAAAATTCATAAATTTGAGGAAGCTTTGAAGGAAAAGAGGAGC
 AGCTAACTCGTGTGACTGAAGTTTCAAGGTTGCAGGCCAGCAGGAGATGCCGCTCTGGAAGAGTTTAA
 GCGGCAGGTGAACTGAACTCAGAGAAAGTCTATGCTGAAATGAAAGAGCAGATGAAAAAGTGGAGGCA
 GATCTAACTAGATCCAAATCTCTTCGTGAGAAACAATCAAAGGAGTTTTTATGGCAACTGGAGGACATCA
 GACAGCGGTATGAACAACAGATAGTAGAGCTGAAGCTGGAGCATGAACAGGAGAAGAGCGCACCTATTACA
 GCAGCATAACGCAGAGAAGGATAGCCTAGTCCGAGACCATGAACGGGAAATGAAAACCTGGAAAAACAG
 CTTGCGCTGCCAATATGGAGCACGAAAATCAAATTCAGGAGTTCAAGAAACGAGATGCACAGGTTATTG
 CCGACATGGAGGCCAGGTTCAAGTTGAGAGAAGAAATGATCAATGTGAACTCACAGCGGAAACAGCA
 GCTGGTAGAGCTTGGTCTTCTTCGTGAAGAGGAAAAGCAAGGGCTACAAGGGAACATGAGATTGTGCTC
 AAATAAACTGAAGGCTGAATCAGAAAAGATGAAAATAGAGCTGAAAAAGACTCATGCTGAGACAGAGA
 TGACACTGGAAAAGGCCAACAGCAAGCTGAAGCAGATTGAGAAGGAATCACTCAGAAGCTTGCCAAATC
 TTCACAGATCATAGCAGAACTTCAAGCAACCTTTCTCTCTGAAAGAAGAGAACAGCCAGCAGCAGCTT
 GCTGCAGAAAGCGGCTCCAGGATGTTAGACAAAAGTTTGAAGATGAGAAGAAGCAGCTGATTAGAGATA
 ATGACCAAGCAATCAAGGTTTTACAAGTGAATTAGAAAACCGTTCTAATCAGGTGCGATGTGCAGAGAA
 AAAATTACAACACAAAAGAAATGGAGTCAAGGAACAGATAACTTACATACGACAAGAATATGAAACAAA
 TTGAAAGGATTGATGCCAGCATCCCTAAGACAAGAACTTGAAGACACCATTTCTCCCTAAAATCACAGG
 TTAATTTCTGAAAAGAGAGCTTCCATCTTTCAGGAAGAACTGACTACATATCAAGGCAGAAGG

ACGCGTACGCGGCCGCTCGAGCAGAACTCATCTCAGAAGAGGATCTGGCAGCAAATGATATCCTGGATT
 ACAAGGATGACGACGATAAGGTTTAA

Protein Sequence: >RC220081 representing NM_145036
 Red=Cloning site Green=Tags(s)

```
MEVGSEEEKWEKLD AEFDFVVDMPFVLKLP HRTERQRCALWIRKLC EPSGTGAGIMGRKNRNL YAKLL
LHMLKRGAL EGPFTHRPEPGLKILPSYMSIYFDEPNPARAKGSSPEGLPAWVLEGETSEHKLNESWKL
SSGEDNTLVQSP TDVYSREQYTGKLRVRSLSLSP THREDGQNI TPKICEVYSKSPVSLDDSDIEARLNS
WNLGIENPRYL RQKPIPVSLMTPKFSLRKSSSFHDDHFLSR IREKELDMKTKMMEAKFHEEKLLKQQKHD
ADVQKILERK NNEIEELKTL YRSKQHEETE IIRKLEKKVQTL IRDCQVIRETKEDQIAELKKICEQSTES
LNNDWEKKLH NVAEMEQEKF DLQKQHTENIQELLEDTN VRLNKMESEYMAQTQSTNHMIKELEARVQQL
TGEAENSNLQR QKLIQEKAELERCYQITCSELQEVKARRNTLH KEKDHLVNDYEQNMKLLQTKYDADINL
LKQEHALSASK ASSMIEELEQNVCQLKQQLQESELQRKQQLRDQENKFQMEKSHLKHIEYKKAHDLQSEL
DKGKEDTQKKI HKFEEALKEKEEQ LTRVTEVQRLQAQQADA ALEEFKRVQVELNSEKVYAEMKEQMEKVEA
DLTRSKSLREK QSKEFLWQLEDIRQRYEQQIVELKLEHEQE KTHLLQQHNAEKDSLVRDHEREIENLEKQ
LRAANMEHENQ IQEFKKRDAQVIADMEAQVHKLREEL INVNSQRKQQLVELGLLREEEKQRATREHEIVV
NKLKAESEKMK IELKTHAAETEMTLEKANSKLKQIEKEYTQKLAKSSQIIAELQTTISSLKEENSQQQL
AAERRLQDVRQ KFEDEKKQLIRDNDQAIKVLQDELENRSNQVRCAEKKLQHKELESQEQITYIRQEYETK
LKLGLMPASLR QELEDTISLKSQVNF LQKRASILQEEL TTYQGRR
```

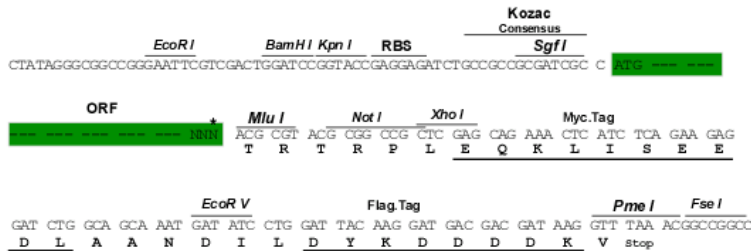
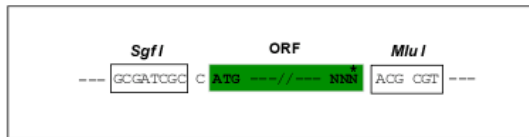
TRTRPLEQKLISEEDLAANDILDYKDDDDKV

Chromatograms: https://cdn.origene.com/chromatograms/mk8020_f12.zip

Restriction Sites: SgfI-MluI

Cloning Scheme:

Cloning sites used for ORF Shuttling:



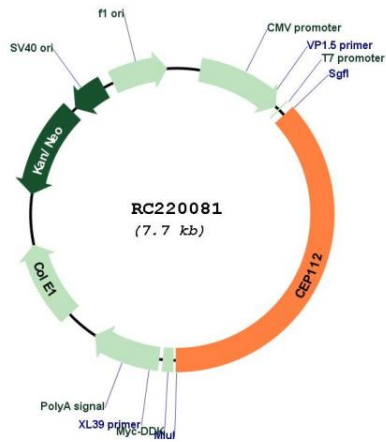
* The last codon before the Stop codon of the ORF

ACCN: NM_145036

ORF Size: 2865 bp

OTI Disclaimer:	The molecular sequence of this clone aligns with the gene accession number as a point of reference only. However, individual transcript sequences of the same gene can differ through naturally occurring variations (e.g. polymorphisms), each with its own valid existence. This clone is substantially in agreement with the reference, but a complete review of all prevailing variants is recommended prior to use. More info
OTI Annotation:	This clone was engineered to express the complete ORF with an expression tag. Expression varies depending on the nature of the gene.
Components:	The ORF clone is ion-exchange column purified and shipped in a 2D barcoded Matrix tube containing 10ug of transfection-ready, dried plasmid DNA (reconstitute with 100 ul of water).
Reconstitution Method:	<ol style="list-style-type: none">1. Centrifuge at 5,000xg for 5min.2. Carefully open the tube and add 100ul of sterile water to dissolve the DNA.3. Close the tube and incubate for 10 minutes at room temperature.4. Briefly vortex the tube and then do a quick spin (less than 5000xg) to concentrate the liquid at the bottom.5. Store the suspended plasmid at -20°C. The DNA is stable for at least one year from date of shipping when stored at -20°C.
RefSeq:	NM_145036.3
RefSeq Size:	3511 bp
RefSeq ORF:	2868 bp
Locus ID:	201134
Cytogenetics:	17q24.1
MW:	112.6 kDa
Gene Summary:	This gene encodes a coiled-coil domain containing protein that belongs to the cell division control protein 42 effector protein family. In neurons, it localizes to the cytoplasm of dendrites and is also enriched in the nucleus where it interacts with the RNA polymerase III transcriptional repressor Maf1 to regulate gamma-aminobutyric acid A receptor surface expression. In addition, the protein has been identified as a component of the human centrosome. Alternative splicing results in multiple transcript variants. [provided by RefSeq, Nov 2014]

Product images:



Circular map for RC220081