

Product datasheet for **RC220080**

AP2 alpha (TFAP2A) (NM_001042425) Human Tagged ORF Clone

Product data:

Product Type:	Expression Plasmids
Product Name:	AP2 alpha (TFAP2A) (NM_001042425) Human Tagged ORF Clone
Tag:	Myc-DDK
Symbol:	AP2 alpha
Synonyms:	AP-2; AP-2alpha; AP2TF; BOFS; TFAP2
Mammalian Cell Selection:	Neomycin
Vector:	pCMV6-Entry (PS100001)
E. coli Selection:	Kanamycin (25 ug/mL)



[View online »](#)

ORF Nucleotide Sequence:

>RC220080 representing NM_001042425
 Red=Cloning site Blue=ORF Green=Tags(s)

TTTTGTAATACGACTCACTATAGGGCGGCCGGGAATTCGTCGACTGGATCCGGTACCGAGGAGATCTGCC
 GCC**GCGATCGCC**

ATGTCCATACTTGCCAAATGGGGGACTGGCAGGACCGTCACGACGGCACCAGCAACGGGACGGCAGCGT
 TGCCCCAGCTGGGCACTGTAGGTCAATCTCCCTACACGAGCGCCCGCCGCTGTCCACACCCCCAATGC
 CGACTTCCAGCCCCATACTTCCCCCACCTACCAGCCTATCTACCCCCAGTCGCAAGATCCTTACTCC
 CACGTCAACGACCCCTACAGCCTGAACCCCTGCACGCCAGCCGAGCCGAGCAGCAGCCAGGCTGGCCCG
 GCCAGAGGCAGAGCCAGGAGTCTGGGCTCTGCACACGCCGGGGGCTGCCTACCAGCTGTGGGCT
 GGATCCTCGCAGGGACTACAGGCGGCACGAGGACCTCTGCACGGCCACACGCGCTCAGCTCAGGACTC
 GGAGACCTCTCGATCCACTCCTACCTCACGCCATCGAGGAGTCCCGCATGTAGAAGACCCGGGTATTA
 ACATCCCAGATCAAAGTGAATTAAGAAAGGCCCGTGTCCCTGTCCAAGTCAAACGCAATGCCGTCTC
 CGCCATCCCTATTAACAAGGACAACCTCTCGGGCGCGTGGTGAACCCCAACGAAGTCTTCTGTTAGTT
 CCGGGTCGCTCTCGCTCCTCAGCTCCACTCGAAGTACAAGGTACGCGTGGCGGAAGTGCAGCGCGGC
 TCTCACACCCGAGTGTCTCAACGCGTCGCTGCTGGGCGGAGTGTCCGGAGGGCGAAGTCTAAAAATGG
 AGGAAGATCTTTAAGAGAAAACTGGACAAAATAGGATTAATCTGCCTGCAGGGAGACGTAAGAGTGC
 AACGTTACCCTGCTCACATCACTAGTAGAGGGAGAAGCTGTCCACCTAGCCAGGGACTTTGGGTACGTGT
 GCGAAACCGAATTTCTGCCAAGCAGTAGTGAATTTCTCAACCGACAACATCCGATCCCAATGAGCA
 AGTGACAAGAAAAACATGCTCCTGGCTACAAAACAGATATGCAAAGAGTTCACCGACCTGCTGGCTCAG
 GACCGATCTCCCTGGGAACTCAGGCCCAACCCATCCTGGAGCCCGGATCCAGAGCTGCTTGACCC
 ACTTCAACCTCATCTCCACGGCTTCGGCAGCCCGCGGTGTGTGCCGGGTACGGCCCTGCAGAACTA
 TCTCACCGAGCCCTCAAGGCCATGGACAAAATGTACCTCAGCAACAACCCCAACAGCCACACGGACAAC
 AACGCCAAAAGCAGTGACAAAGAGGAGAAGCACAGAAAAG

AG**GCGACCG**ACGCGTACGCGGCCGCTCGAGCAGAAACTCATCTCAGAAGAGGATCTGGCAGCAAATGATATCC
 TGGATTACAAGGATGACGACGATAAGGTTAA

Protein Sequence:

>RC220080 representing NM_001042425
 Red=Cloning site Green=Tags(s)

MSILAKMGDWQRHDGTSNGTARLPQLGTVGQSPYTSAPPLSHTPNADFQPPYFPPPYQPIYPQSQDPYS
 HVNDPYSLNPLHAQPQPQHPGWPGQRQSQESGLLHHRGLPHQLSGLDPRRDYRRHEDLLHGPHALSSGL
 GDL SIHSLPHAIIEVPHVEDPGINIPDQTVIKKGPVSLSKSNSNAVSAIPINKDNLFGGVNPNVEFCSV
 PGRLSLLSSTSKYKVTVAEVQRRLSPPECLNASLLGGVLRRAKSKNGGRSLREKLDKIGLNLPAARRKAA
 NVTLLTSLVEGEAVHLARDFGYVCETEFPAKAVAEFLNRQHSDPNEQVTRKNMLLATKQICKEFTDLAQ
 DRSPLGNSRPNPILEPGIQSCLTHFNLSHGFGSPAVCAAVTALQNYL TEALKAMDKMYLSNPNHSHTDN
 NAKSSDKEEKHRK

SGP**TRTRRLEQKLI SEEDLAANDILDYKDDDDK**V

Chromatograms:

https://cdn.origene.com/chromatograms/mk8059_f03.zip

Restriction Sites:

Sgfl-RsrII

Cloning Scheme:


ACCN: NM_001042425

ORF Size: 1299 bp

OTI Disclaimer: Due to the inherent nature of this plasmid, standard methods to replicate additional amounts of DNA in E. coli are highly likely to result in mutations and/or rearrangements. Therefore, OriGene does not guarantee the capability to replicate this plasmid DNA. Additional amounts of DNA can be purchased from OriGene with batch-specific, full-sequence verification at a reduced cost. Please contact our customer care team at custsupport@origene.com or by calling 301.340.3188 option 3 for pricing and delivery.

The molecular sequence of this clone aligns with the gene accession number as a point of reference only. However, individual transcript sequences of the same gene can differ through naturally occurring variations (e.g. polymorphisms), each with its own valid existence. This clone is substantially in agreement with the reference, but a complete review of all prevailing variants is recommended prior to use. [More info](#)

OTI Annotation: This clone was engineered to express the complete ORF with an expression tag. Expression varies depending on the nature of the gene.

Components: The ORF clone is ion-exchange column purified and shipped in a 2D barcoded Matrix tube containing 10ug of transfection-ready, dried plasmid DNA (reconstitute with 100 ul of water).

Reconstitution Method:

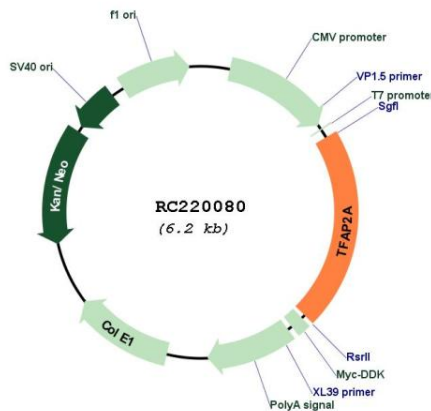
1. Centrifuge at 5,000xg for 5min.
2. Carefully open the tube and add 100ul of sterile water to dissolve the DNA.
3. Close the tube and incubate for 10 minutes at room temperature.
4. Briefly vortex the tube and then do a quick spin (less than 5000xg) to concentrate the liquid at the bottom.
5. Store the suspended plasmid at -20°C. The DNA is stable for at least one year from date of shipping when stored at -20°C.

RefSeq: [NM_001042425.2](#)

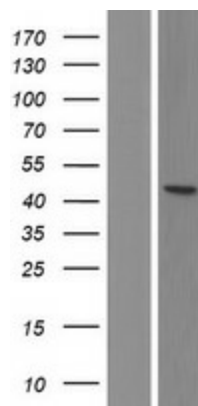
RefSeq Size: 3150 bp
 RefSeq ORF: 1302 bp
 Locus ID: 7020
 UniProt ID: [P05549](#)
 Cytogenetics: 6p24.3
 Protein Families: Druggable Genome, Transcription Factors
 MW: 47.3 kDa

Gene Summary: The protein encoded by this gene is a transcription factor that binds the consensus sequence 5'-GCCNNNGGC-3'. The encoded protein functions as either a homodimer or as a heterodimer with similar family members. This protein activates the transcription of some genes while inhibiting the transcription of others. Defects in this gene are a cause of branchiooculofacial syndrome (BOFS). Three transcript variants encoding different isoforms have been found for this gene.[provided by RefSeq, Dec 2009]

Product images:



Circular map for RC220080



Western blot validation of overexpression lysate (Cat# [LY420895]) using anti-DDK antibody (Cat# [TA50011-100]). Left: Cell lysates from untransfected HEK293T cells; Right: Cell lysates from HEK293T cells transfected with RC220080 using transfection reagent MegaTran 2.0 (Cat# [TT210002]).