

Product datasheet for RC220076

ALPK3 (NM_020778) Human Tagged ORF Clone

Product data:

| | |
|---------------------------|---|
| Product Type: | Expression Plasmids |
| Product Name: | ALPK3 (NM_020778) Human Tagged ORF Clone |
| Tag: | Myc-DDK |
| Symbol: | ALPK3 |
| Synonyms: | CMH27; MAK; MIDORI |
| Mammalian Cell Selection: | Neomycin |
| Vector: | pCMV6-Entry (PS100001) |
| E. coli Selection: | Kanamycin (25 ug/mL) |
| ORF Nucleotide Sequence: | >RC220076 representing NM_020778 Red=Cloning site Blue=ORF Green=Tags(s) |

TTTTGTAATACGACTCACTATAGGGCGGCCGGAATTCGTCGACTGGATCCGGTACCGAGGAGATCTGCC
GCC**CGATCGCC**

ATGGAGGTGGCTTGGCTTGTCTATGTGCTGGGCCAACAGCCACTGGCGAGGCAAGGCGAGGGTCAGTCAC
GGCTGGTGCCAGGAAGAGGGCTGGTTCTTTGGCTCCCTGGTCTCCCGCGGTCTAGCCCAAGCTGGCCAGC
GGTTGACCTGGCTCCCTGGCCCGGCCAGGCCTCGTGGACCCCTCATATGCCACACGGGACATGAGCAG
GCCGGCCGGGAGCCGGTCCCGGAGCTCCACGAAGGGGCTGTCTCCATGACCAGGACACCCGCTGCC
CCTTCTCCCGAGGCCTCCCGGCTCTCCAGACGCGGCGCTACTGCAGACACCAGGGCCCAAGGGAG
CGGACTCGGAGCCGGCCCTGGGGCGGGCACATGGGCCCGGCGCCCGCGGCTCTCAAGCCGCGCTGC
CCGGGTCCGGCCAGGCCAGGGGAGGGACAGCAGAGGTGACGACGGCCCGGCCACCGGCTATAAATAGGG
GCGCGCTCAGCCCGGGCGGGAGCGGGCGGGCGGGCAGGGGCCCGGGGCGGGGCTGGAGGACAGG
CGAGGCAGCGGCGAGTGCGGGGCCGGCGGTCCGGGAGGGCGGTGCCATGGGGTCCGGGAGGGCCCCACC
CGGGCTGGGGCGCGGTGGCGGTCCGGGGCGGGGGCGACGGTGAGGACGACGGCCCGTGTGGATCC
CCAGCCAGCCAGCCGGAGCTACCTGCTCAGCGTCCGGCCGAGACCAGTTATCAAGCAACCGGTTGTC
TCACCCAGCTCTGGAAGGAGCACCTTCTGCTCCATCATTGCTCAGCTCACAGAGGAGACCCAGCCGCTA
TTTGAGACCAGCTCAAGTCCCGTCTGTGTCGAGGACAGGTCAGGTTACCTGCATCGTCACAG
GATACCCAGAGCCAGAGGTGACCTGGTACAAGGATGATACGGAGCTGGACCGCTACTGTGGCTTGCCAAA
ATATGAGATCACTCATCAGGGCAACCGCCACACTGCAGCTGTACAGGTGTCGAGAAGAAGATGCCGCC
ATCTACCAGGCCTCTGCCAGAACAGCAAGGGCATTGTGTCTGCTCAGGGTCTGGAGGTGGGCACCA
TGACTGAGTACAAGATCCACCAGCGCTGGTTCGCCAAGTTGAAGCGCAAGGCTGCGGCAAGCTGCGCGA
GATCGAGCAGAGCTGGAAGCACGAGAAGGCGGTGCCTGGGAGGTCGACACTCTGCGCAAGCTCAGCCCC
GACCGCTCCAGCGAAAGCGCGATTGAGCGGGGCTCAAGCGCCGGGCCCTCGGTCCCTACCAGGGAGC
CTGAGGGTGGGACCTGGCGCTTGGCAGGAGGAGAGACTGAGACTGCTCAGCACTCAGGTTTGGGCT
GATCAACAGTTTTGCTTCTGGAGAAGTGACCACCAACGGGGAGGCTGCCCGGAGATGGAGAGGACGGA



[View online >](#)

GAGCATGGCTTGCTGACATACATCTGTGACGCCATGGAGCTGGGGCCTCAGAGAGCCCTCAAAGAGGAGA
GTGGGGCCAAGAAGAAAAGAAAGATGAGGAATCCAAGCAAGGCCTGCGGAAGCCAGAGTTAGAGAAGGC
AGCCCAAAGCCGCGTTCCTCAGAAAAGTGCATCCCCAGCTCAGACGAGCCTGACTCCTGTGGGACTCAG
GGGCCGTGGCGTGGAGCAGGTTAGACCCAGCCAGAGGCAGGGCTGCACGGGGCCTGGGTCTCTG
GCACAGATAGTACCAGGAAGCCAGCCTCTGCTGTGGGACTCCAGACAAGGCCAGAAGGCCCTGGCCC
AGGCCAGGCCAGGAAGTGTATTTCTCCTTGAAGGACATGTACCTGGAGAACCACAGCCAGTCAAGCCCT
CTTGGGAAGAGGGACCCAGACCCTGAGTGTCCGGCGCCTGGGGAGAGTCCCAAGGGGAAGCCACCCC
TCAGGGCTAGAAGCGAGGGGTGCCTGGCGCTCCTGGCCAGCCACACACTCCTTGACCCCCAGCCGAC
TAGGCCTTTCAACAGAAAAGAGATTTGCCCTCCAAAGCCCAAAGGAGAGGCCACCACTGACAGCAAGCCC
ATTTCTTCTCTGAGTCAAGCTCCAGAATGCGGGGCCAGAGCTTAGGAAAAGGCCCACTCAGGCCTCTG
TGCAGGTGCCAGCCCCCTGCCGGCGGAGACATGGCACCCGGGACAGCACGTTGCAGGGGCAAGCAGG
CCACAGGACTCCAGGAGAGTCTGGAATGCCAGACAACCACGGCTCCTACCATGTCGGCCAGCAGCAGC
TCTGATGTAGCCTCCATTGGGGTAGCACTTCCGGAAGTCAAGGTATCATTGAACCCATGGATATGGAAA
CCCAGGAGGATGGGAGAATCTGCTAACCAGAGAAGTGAAGCAAGAAGATGTGCAGGCAGATGGGAA
GATACAAGTGGATGGAAGGACCAGGGGAGATGGAACACAGACAGCCAGAGGACAGTGCAGATAGGAAG
ACGCAGGTGGATGCTGGGACACAAGAAAGCAAGAGGCCACAGTACAGACAGGAGTGCACAGAAGGGCATGA
TGACACAGGGAAGGGCAGAGACACAGCTAGAAAACAACACAGGCAGGTGAGAAGATACAGGAAGACAGGAA
GGCCCAGGCAGATAAGGGCACACAGGAAGACAGAAGGATGCAGGGAGAGAAGGGGATGCAGGGAGAGAAG
GGGACGCAGTCAAGGGGAGCGGCCACAGCCATGGAAGGTCAGTCTGAGCAAGAGGTGGCAACCAGCC
TCGGCCCAACATCCAGAACCCCCAACTCCCACCTACAGCGGGTCTAGAGCTCCTCTGAATATTGAATG
TTTTGTACAGACCCAGAAGGTCTTGTTCACAAAAAACCTGGTTGCCTGCCAGATCTGAGGAGGCA
GTAGTAACAGCCTCCAGGAACCATGAGCAAACTGTGCTGGTCCCTGTGAGGAACTCATGCTCCAG
CACAGCCGCCCATGAGGGGAGTGTGGAGCAGGTGGGAGGAGAGATGCCGAGGGCCACAGTCAACAGG
CCAGTGCAGGGCAAGCAGGAGGACAGCCGTTCCAGTGCCTCAAGGAGGAGCGGCCAGGGGAGTGCAGG
TGTATGGATCAGGTTGGCTGTCTCTAGCTGGCCTGAGCCAGGAGTACCCACGATGCCTTCTCTTCTG
GAACTGGGCTGACAGCTAGCCAAAGGCGGGGCGTGTAGCACCCGACTTCTCAGCACGGGAGCACAGC
CACCTTCTGCCCTCTGAGGATCAGGTCTGATGAGTTCTGCCCAACACTGCACCTGGGCTGGGGACC
CCCCTCAGAGTACCCACCAGAAACCATGGCCACCAGCAGTGGGGGGCCTGCGCCAGGTACCAGATG
TGGAGGGGCGGACCCAGGTCCCGGAGCTGTGACCTGGCCTCATAGATTCCCTGAAGAAGTACCTGCT
TCTGCTGTGAAGCTGTCCAGCACAGACAAGTGGAGCAGGGGAGAGTCCAGGTGGGGGAGCCACC
GGAGTCTGGTGCCTCAGCCACTGTGACCCACTGTGGAAGTGGCTGGGCTTAGTCCCGGACATCGA
GGCGCATCCTGGAGCGTGTGGAGAACAACACCTGGTGCAGAGTGCACAGACCCTGCTGCTGAGCCCTG
TACCTCCCGCCGCTCACCGGCCTCCTGGACCGTGGAGTGCAGGCTGGCCGCCAGGCCCTTGTGCTGCC
CGAGGCTCCTGGGGTCTGGTCCAGCTCCCTCACTGTCCCTGCCATTGTGGTAGACGAGGAGGCCCTG
GGCTGGCCTCAGAAGGAGCCAGTGGGGTGAAGGAGAGGTTTCCCTGAGGGGCCGGCCTCCTGGGGG
CTCTCAGGAGAGCAGCATGGCTGGTGGTGGGAGGGGAGGGTGGGAGGAGGCCCTGGACAGGGGCC
TCAGCAGAGAGCATAGCCAGGAGCCCTCCCAAGAGGAGAAGTCCAGGGGAGGCTCTGACAGGTCTCC
CGGCAGTACACTGAGGAAGTGGCTTAGGGGCCGGAGGAAGAGATTTCTCCCTAAGGTGAGAGCAGC
AGGAGACGGGGAGGCAACCACACTGAAGAAAGGGAGAGCCACAGGTTTCCCCCGGGGCCAGGAAA
AGCCTGGTGCCTGGGTCACAGGACTCCAGGGCGGAGAGACGCTCCCTACGCAGGGCAGAAAGGCGA
GCATGCTGGAGGTGCCTCGGGCAGAGGAGGAGTGGCGGAGGAGACTGGGCCAGGCCCAAGGCCGG
CGGTCTGGACACAGAGGTGGCCCTGGATGAAGGCAAGCAGGAGACTGGCCAAGCCAGGAAAGCCAAA
GACCTGCTGAAAGCCCCACAGGTGATCCGGAAGATTGGGTGGAGCAGTTTCTGATGCCTCCGGTAGCC
TGAAGCTGTGGTGCAGTTTTTCAACATTCTTAGTGACTCAGTCTTGACATGGGCCAAGGATCAGCGCC
AGTGGGCGAGGTGGCAGGAGCGCAGGGGATGAGGGGCCGGCGCCTTGGCCATCGTGCAGGCCTCCCC
GTAGACTGCGGTGTGATCGGTGCACCATCCACAATGAGCACGGCTCGGCCTCCACCGACTTCTGCCTCA
GCCCTGAGGTGTGTGATCAGGATTCATCTCCAGAGAAGAAGTGAAGTTGGAGAAGAGATTGAGATGACCC
TATGGTGTGGTAAAGGTCTGGCTGACTCTGGCTGCTGGGGGACAAGCTCTTTGGGCGACTGGTAAGC
GAGGAGTCCGAGGGGTGGATATGGGTGTGGCCTTCGGAAGGCCTCCAGGCCAAGGTCATCTACGGG
TGAACCCATCTCGAGTCGGGCCGACAGTGCATCATCAAGGTGTCCAGCCTGCTTGTGTTGGGCCAG
CAGTGAGACTTCTTGTGGGAGAACTACGACGTCAACATCCAGGGGTGCAAGATCCAGAACATGAGT
CGGGAGTACTGCAAAATCTTCGACAGAGAAGCCCGGGCCGCGCTGGCTTGGGGAGGTGCCTGAGATCA

TCCCCTGTATCTGATCTACCGCCTGCAACAATATCCCATATGCTACCTGGAGGAAGACCTGGGCAA
 GCCCTGGAGTCTTACTGTTCTCGGGAATGGGGCTGTGCTGAGGCTCCGACAGCATCTGGCAGCTCTGAG
 GCCATGCAGAAATGCCAGACCTTCCAACACTGGCTGTATCAGTGGACAAATGGCAGCTTCTTGTACAG
 ACTTGGCAGGGGTTGACTGGAAGATGACTGATGTGCAGATTGCTACCAAACCTCCGAGGATACCAGGGCT
 CAAGGAAAGCTGCTTCCCTGCCCTGTGGACCGGTTCCCTCCTCCCACCAAGTCAATGCCTACTGTGAG
 CTGCTGGGGCTGACACCTCTCAAGGGCCCGGAGCGGCCACCCCAAGCCAAAGCCAAAGGCTCTAAGA
 GTCCATCTGCTGGCAGGAAAGGCTCCAGCTGAGTCTCAGCCCCAGAAGAAAGGCTCCCTAGTCTCTCA
 GGGCACCCGGAAGAGTGCTCCAAGTTCGAAGGCCACCCCTCAGGCTCAGAGCCATCACCCTCAGTTG
 TTGGGACAGCCTCCCACCAAGAGGAGGCTCCAAGGCCAGGGCATGCGG

ACGCGTACGCGGCCGCTCGAGCAGAACTCATCTCAGAAGAGGATCTGGCAGCAAATGATATCCTGGATT
 ACAAGGATGACGACGATAAGGTTTAA

Protein Sequence:

>RC220076 representing NM_020778
 Red=Cloning site Green=Tags(s)

MEVAWL VYVLGQQPLARQGEGQSRLVPGRGLVWL PGLPRSSPSWPAVDLAPLAPARPRGPLICHTGHEQ
 AGREPGGSSTKGPVLHDQDTRCAFLPRPPGLQTRRYCRHQGRQGSGLGAGPGAGTWAPPPGVSKPRC
 PGRARPGEQQVTTARPPAINRGARQPRAGAAAAGRPGAGAWRTGEAAASAGPVGEGGAMGSRRAPT
 RGWAGGRSGAGGDGEDDGPVWIPSPASRSYLLSVRPETSLSSNRLSHPSSGRSTFCSSIIAQLTEETQPL
 FETTLKRSVSESDVRFTCIVTGYPEPEVTWYKDDTELDRYCGLPKYEITHQGNRHTLQLYRCREEDAA
 IYQASAQNSKGI VSCSGVLEVGTMTEYKIHQRWFAKLKRKAAAKLREIEQSWKHEKAVPGEVDTLRKLS
 DRFQRKRLSGAQAPGPSVPTREPEGGTLAAWQEGEETETAQHSGLLGINSFASGEVTTNGEAAPENGEDG
 EHGLLTYICDAMELGPQRALKEESGAKKKKDEESKQGLRKPPELEKAAQSRSSSENCIPSSDEPDSCGTQ
 GPVGVQVQTPRGRARPGSSGTDSTRKPASAVGTPDKAQKAPGPGQEVYFSLKDMYLENTQAVRP
 LGEEGPQTL SVRAPGESPKGKAPLRARSEGVPAGQPTHSLTPQTPRPFNRKRFAPPKPKGEATDTSKP
 ISSLSQAPECGAQLGKAPPQASVQVTPPARRRHGTRDSTLQGGAGHRTPEVLEQTTTAPTMSASS
 SDVASIGVSTSGSQGIEPMDMETQEDGRTSANQRTGSKKNVQADGKIQVDGRTRGDGTQTAQRTRADRK
 TQVDAGTQESKRQSDRSAQKMMTQGRAETQLETTQAGEKIQEDRKAQADKGTQEDRRMQGEGKMGQEK
 GTQSEGSAPTAMEGQSEQEVATSLGPPSRTPKLPPTAGPRAPLNIECFVQTPEGSCFPKPGCLPRSEEA
 VVTASRNHEQTVLGPLSGNMLPAQPPHEGSVEQVGGERCGRGPQSSGPVEAKQEDSPFQCPKEERPGGVP
 CMDQGGCPLAGLSQEVPTMPSLPGTGLTASPKAGPCSTPTSQHGSTATFLPSEDQVLMSSAPTLHLGLGT
 PTQSHPPETMATSSGACAQVPDVEGRTPGPRSCDPGLIDSLKNYLLLLLKLSTETSGAGGESQVGAAT
 GGLVPSATLTPTVEVAGLSPRTSRRLERVENNHLVQSAQTL LLSPTSRRLTGLLDREVQAGRQALAAA
 RGSWGP GPSSLTPVAIVVDEEDPGLASEGASEGEGEVSPGPGLLGASQESSMAGRLGEAGQAAPGQGP
 SAESIAQEPSQEEKFPGEALTGLPAATPEELALGARRKRFLPKVRAAGDGEATTPEERESPTVSPRGRK
 SLVPGSPGTPGRERRSPTQGRKASMLEVPRAEEELAAGDLGSPKAGGLDTEVALDEGKQETLAKPRKAK
 DLLKAPQVIRKIRVEQFPDASGSLKLWCQFFNILSDSVL TWAKDQRPVGEVGRSAGDEGPAALAI VQASP
 VDCGVYRCTIHNEHGSASTDFCLSPEVLSGFISREEGEVGEIEIMTPMVF AKGLADSGCWGDKLFGRLVS
 EELRGGGYGCLRKASQAKVIYGLEPIFESGRTCIKVSLLVFGPSSSETSLVGRNYDVTIQGCKIQNMS
 REYCKIFAAEARAAPGFGEVPEIIPLYLIYRANNIPYATLEEDLGKPLESYCSREWCAEAPTASGSSE
 AMQKQQTQFQHWL YQWTNGSFLVTDLAGVDWKMTDVQIATKLRGYQLKESCFPALLDRFASSHQCNAyce
 LLGLTPLKGPEAAHPQAKAKGSKSPSAGRKGSQ LSPQPQKGLPSPQGRKTRKSAPSSKATPQASEPVTTL
 LGQPPTQEEGSKAQGMR

TRTRPLEQKLISEEDLAANDILDYKDDDDKV

Restriction Sites:

SgfI-MluI

Cloning Scheme:


ACCN: NM_020778

ORF Size: 5721 bp

OTI Disclaimer: Due to the inherent nature of this plasmid, standard methods to replicate additional amounts of DNA in E. coli are highly likely to result in mutations and/or rearrangements. Therefore, OriGene does not guarantee the capability to replicate this plasmid DNA. Additional amounts of DNA can be purchased from OriGene with batch-specific, full-sequence verification at a reduced cost. Please contact our customer care team at custsupport@origene.com or by calling 301.340.3188 option 3 for pricing and delivery.

The molecular sequence of this clone aligns with the gene accession number as a point of reference only. However, individual transcript sequences of the same gene can differ through naturally occurring variations (e.g. polymorphisms), each with its own valid existence. This clone is substantially in agreement with the reference, but a complete review of all prevailing variants is recommended prior to use. [More info](#)

OTI Annotation: This clone was engineered to express the complete ORF with an expression tag. Expression varies depending on the nature of the gene.

Components: The ORF clone is ion-exchange column purified and shipped in a 2D barcoded Matrix tube containing 10ug of transfection-ready, dried plasmid DNA (reconstitute with 100 ul of water).

Reconstitution Method:

1. Centrifuge at 5,000xg for 5min.
2. Carefully open the tube and add 100ul of sterile water to dissolve the DNA.
3. Close the tube and incubate for 10 minutes at room temperature.
4. Briefly vortex the tube and then do a quick spin (less than 5000xg) to concentrate the liquid at the bottom.
5. Store the suspended plasmid at -20°C. The DNA is stable for at least one year from date of shipping when stored at -20°C.

RefSeq: [NM_020778.2](#), [NP_065829.2](#)

RefSeq Size: 10914 bp

RefSeq ORF: 5118 bp

Locus ID: 57538

UniProt ID: [Q96L96](#)

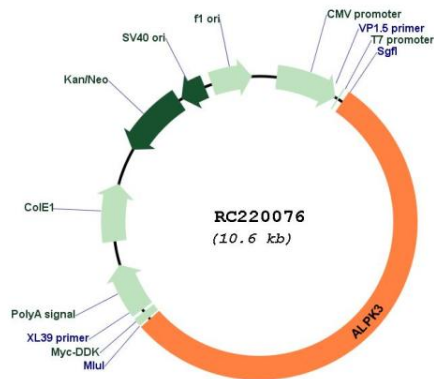
Cytogenetics: 15q25.3

Protein Families: Druggable Genome, Protein Kinase

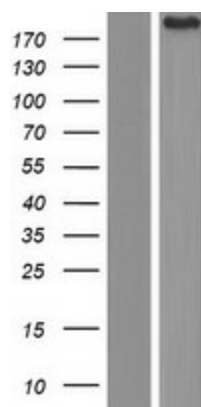
MW: 201.1 kDa

Gene Summary: Involved in cardiomyocyte differentiation.[UniProtKB/Swiss-Prot Function]

Product images:



Circular map for RC220076



Western blot validation of overexpression lysate (Cat# [LY412333]) using anti-DDK antibody (Cat# [TA50011-100]). Left: Cell lysates from untransfected HEK293T cells; Right: Cell lysates from HEK293T cells transfected with RC220076 using transfection reagent MegaTran 2.0 (Cat# [TT210002]).