

Product datasheet for RC220070

TNRC6C (NM_018996) Human Tagged ORF Clone

Product data:

Product Type:	Expression Plasmids
Product Name:	TNRC6C (NM_018996) Human Tagged ORF Clone
Tag:	Myc-DDK
Symbol:	TNRC6C
Vector:	pCMV6-Entry (PS100001)
E. coli Selection:	Kanamycin (25 ug/mL)
Cell Selection:	Neomycin
ORF Nucleotide Sequence:	>RC220070 representing NM_018996 Red=Cloning site Blue=ORF Green=Tags(s)

TTTTGTAATACGACTCACTATAGGGCGGCCGGAATTCGTCGACTGGATCCGGTACCGAGGAGATCTGCC
GCCGCGATCGCC

ATGGCTACAGGGAGTGCCAGGGCAACTTCACTGGACATACCAAGAAGACAAATGGCAATAATGGCACCA
ATGGCGCACTCGTCCAAAGCCCTTCTAATCAGAGTGCCCTTGGAGCAGGGGGAGCGAACAGTAATGGAAG
TGCGGCCAGAGTGTGGGTGTAGCCACAGGCTCCAGCTCTGGCTGGCTCACTGCTGTCACTGGTGGG
GATGGAAAAATGGACACTATGATTGGAGATGGGAGAAAGTCAGAATTGCTGGGGTGTCTCCAACCTCAATG
CTGGCATTAACTTAACCTTAATCCTAATGCCAACCCAGCTGCCTGGCCTGTACTTGGACATGAAGGAAC
CGTGGCGACAGGCAACCTTCCAGTATTTGCAGTCCAGTCCAGTCCATAGGTCAAATATGGGCAACCAG
AACGGGAACCAACAGGCACTTTAGGTGCTTGGGAAAACCTTGGTCCACAAGAGACACAGAACCACAAA
CGTCCACTTCTCAGAAATGTGCTTTTCAGCGCACAACTCAGAACCTTAACACTGATGGACCAAATAACAC
TAACCCCATGAACTCTTACCCAAACCTATCAATGCAATGCAGACAAATGGACTGCCAACTGGGGCATG
GCTGTTGGTATGGGGCCATCATCCCGCCACCTGCAAGGCCTTCTGGTGTAAATGGATCATCAGTTT
CTCAAGTCAGTGGGGCAGTGTGAAGGAATAAGCAATTCGTGTGGGACTGTCCCAGGTAACCTGTC
CACAGGAAATAGCAATTCGTTTCAGTCAGGGGAATGGAGACACTGTGAACTCAGCATTAAAGTGCTAAA
CAAAATGGATCCAGCAGTGTGTGCAAAAGGAAGGAAAGTGGAGGAAATGCTTGGGATTCAGGACCTCCTG
CTGGTCTCTGGAATACTCGCTGGGGAAGGGGAGTGGCAACAATGGCGTTGGTAATATCCATTCAGGAGC
TTGGGGCCACCCAGCCGAAGCACCTCTAACGGTGTGAATGGGGAATGGGAAAGCCCCAAACCAGCAT
TCCAACAGTGACATCAATGGGAAAGGATCAACAGGGTGGGAGAGTCTAGTGTACCAGCCAGAACCCTA
CCGTACAGCCTGGTGGTGAACACATGAATCCTGGGCCAAAGCGGCATCTTCTGGAATACAGCAAGTGA
AGGAAGTAGTGATGGTTCTGGCAACCACAATGAAGGAAGCACTGGGAGGGAAGGAACGGGAGAAGGCCGA
AGCGGAGATAAAGGGATTATAGACCAAGGCACATCCAGTTGCCAAGGAATGATCTTGACCAAGAGTTC
TGTCTAATACTGTTGGGGACAGACTCCTGTAAGCAAAACACTGCCTGGGAATTTGAAGAATCCCTTAG
GTCTGAAAGGAAAAATGACAATGGGACAGAGGCCTGGGGTGTGCAGCTACTCAGGCTTCAAACCTCAGGG
GGGAAGAACGATGGGTCCATCATGAACAGTACAAATACCTCTTCAAGTATCTGGTGGGTCAACGCGCCAC
CTGCCGCTGTGCCAGCAAAACAGGTTGGGGAGACAGCAACAACAAGCGCCAAGTGGCCCGGGGTTTG
GGGGACTCGATAAGCTCTACTGCTGTTAGTACTGCTGCTGCTGCCAAGAGTGGCCATGCTTGGAGTGGG



GCCGCAAATCAGGAGGACAAGTCACCCACCTGGGGTGGAGCTCCAAAGCCCAAATCCCAACTGGGGAG
 ATGGACAAAGATCAAATCCAGCCTGGAGTGCAGGAGGGGAGATTGGGCAGATTCATCGTCTGCTTGG
 ACACCTGGGGGATGGGAAAAAATGGATCTGGATGGGATGCTGACAGTAATAGGTGAGGGTCTGGTTGG
 AATGACACCACGAGATCTGGGAACAGTGGCTGGGGCAACAGCACAATAACAAAGGCCAATCCAGGTACAA
 ACTGGGGGGAGACTTTAAAACCTGGCCCCAACAGAAGTGGGCTAGCAAACCCCAAGACAACAATGTGAG
 TAACGGGGAGGAGCTGCTTCTGTGAAACAGACAGGAACAGGGTGGATCGGGGGCCGGTACCGGTCAA
 CAGAAGGACAGCAGTGAAGCAACTGGCTGGGAAGAACCCTCTCCACCGTCCATTGCGCCGAAAATGGAAA
 TTGATGATGGTACCTCAGCTTGGGGGACCCAAGCAACTATAACAATAAACTGTAACATGTGGGATAG
 AAACAACCCGGTCATCCAGAGCAGTACCACGACCAATACCACCACCACCACCACCTACCACGAGCAAC
 ACCACACACAGGGTGCAGACGCCGCCCGCACCAGGCCGGTACTCAGCTGAATCGATCACCGTTGCTTG
 GTCCAGGTAGGAAAGTTTCATCAGGCTGGGGAGAAATGCCTAATGTTCACTCAAAGACTGAAAACCTTG
 GGGAGAACCATCTCCCCTTCTACCCTGGTGGATAATGGCACAGCAGCATGGGGGAAGCCACCAGCAGT
 GGCAGCGGGTGGGAGATCACCTGCAGAGCCCGGTGGCATTGGAAGAGCTGGCGCACCTGTTGCTG
 CCTCAGCCCTGTCAAACAGCTTCAAATCTATGCAAGAAGGCTGGGGCAGTGGTGGGGATGAAATGAA
 CCTCAGTACCAGCCAGTGGGAGGATGAAGAAGGGGACGTGTGGAATAATGCTGCTCCCAAGAAAGCACC
 TCCTCCTGCAGCTCCTGGGGGAACGCCCAAAAAGGACTTCAAAGGGCATGAAGACGCTGGCAAGC
 AGGATGAGGCCTGGATCATGAGCCGGCTGATCAAACAACCTCACAGACATGGGCTTCCCGAGAGAGCCAGC
 TGAGGAGGCCCTGAAGAGTAACAATATGAATCTTGATCAGGCCATGAGCGCTCTGCTGGAAGAAGGTTG
 GACGTGGACAAGCGTGGGCTGGGAGTGACCGACCAATAATGGAAATGGCCGCAAGCCCTCGGCTGCCGCC
 CGCCAATCTCAAAGAGTCTTCCGTGGACCGCCACCTTTCTTGACAAGGATGGCGGCTCGTGGGAAGA
 GCCCAGCCTTACCCTTCTGCCTTCCCAAGCCTGAAGCTCCCCCTTACACAGTGCCTCCCCAGT
 CAGGCCCTGGGTGGGATGCCTCCGGCTGGGCATGCAAACTGAATTTCTTAGACAGATACCGAGT
 GCAATCTGGGTATGTTTGGCAATAGTGGAGCAGCACAAGCCAGGACCATGCAGCAGCCACAGCCACC
 AGTGCAGCCTCTTAACCTTCCCAGCCAGTCTCCGTGCTCAAGTGCCTCAGTTTCTATCCCCTCAGGTT
 CAAGCACAGCTTTTGCAGTTTGCAGCAAAAAAATTGGTCTCAACCCTGCACTATTAACCTCGCCAATTA
 ATCCTCAACATATGACGATGTTGAACCAGCTCTATCAGCTGCAGTGGCATAACCAAGTTTACAAATCCA
 GCAGCAGATGTTACAGGCCCAGCGTAATGTGTCCGGATCCATGAGACAACAGGAGCAGCAAGTTGCGCGC
 ACAATCACTAATCTGCAGCAGCAGATCCAGCAGCACCAGCGCCAGCTGGCCAGGCCCTGCTCGTGAAGC
 AGCCACCACCGCCACCGCCCCCGCCGACCTGTCTGCAACCCTCTGCAGGCAATCGGCCATGGACAG
 CTTCCCCTCGCACCCACAGACTCCCGCCCTACCTGACCTGCAGACCAAAGAGCAGCAGTCTTACCCAAC
 ACCTTTGCTCCTTACCCTCTCGTGGACTGAACCCAAACATGAATGTCAACAGCATGGACATGACCGGTG
 GCTTGTGGTGAAGGACCCATCCAGTCCAGTACGCCTCCCCAGTGGACGCACCCCAACTCCATGGA
 TAACCTGCCCAGTGGCGCTTCCCCCTGGAGCAGAACCCTAGCAAGCATGGTGTATCCCTGGAGGTCTA
 AGCATTGGGCCTCCAGGTAAGTCCCTCATTGATGACTCCTATGGCCGGTACGATTTAATCCAGAACAGTG
 AGTCACCAGCCAGTCTCCCCTAGCTGTCCCCATAGCTGGTCCAGTGCACAAATCTGACAGTGATAAAAT
 CTCAAATGGCTCTAGCATCAACTGGCCCCAGAATTCATCCGGGAGTCCATGGAAAGGACTGCAGAAAT
 ATTGACCTGAGAATGACCTGACGTACTCCTGGCAGTGTCCCCACTGGGCCTACCATCAACACCACCA
 TCCAGGATGTCAACCGCTACCTCCTCAAGAGTGGAGGTAACCTGTGACACATCAAATCGAGTGGTCCCT
 TGGCCCTACCTCCACACGCAAGCCTCTGTCTCATGAACTATGGAAGGTGCCAGAAACAGTACTGCA
 CCCACAGGCCACCTCCAGGGTTAACCAATCCCAAGCCCTCCTCCACTGGGGTGCAGCCCTCGGCT
 GGACCAGCTCCTACTCCTCGGGTCTGCCTGGAGCACCAGCACCTCAGGAAGAACCAGCAGCTGGCTCGT
 TCTTCGAAACCTCACTCCCAGATTGATGGTCTACTGCGGACATTGTGTTTGAACATGGGCTCCT
 ATCACATTCACCTGAATCTGACTCAAGGCAATGCTGTGGTCCGGTACAGCTCCAAGGAGGAGGCTGCCA
 AGGCCAGAAAGTCTTGACATGTGCGTCTGGGAAACTACCATCCTGGCCGAGTTCGCTGGTGAAGA
 AGAAGTGAATCGCTTCTAGCCCAAGGCCAGCGCTGCCACCACTTCCAGCTGGCAGTCCAGCAGCGCG
 TCCAGCCAGCCGGCTCAGCGCAGCGGCAGCTCCCATGGCCTGGTACGCAGCAGCAGCTGGCCACTGGA
 ACGCCCCGTGCTGGGTGCAAGGGGAGCAGTGAAGTGTGGGGCGGGGTGCCCAAGTACTCCAGCAG
 CCTGTGGGGCCCGCCAGCGCCAGCAGCAGGGTATAGGCAGCCCCAGCCGCTAACCAACCTGCTG
 CCTGGGGACCTGCTCAGCGGGGAGTCCCTG

ACGCGTACGCGGCCGCTCGAGCAGAACTCATCTCAGAAGAGGATCTGGCAGCAAATGATATCCTGGATT
 ACAAGGATGACGACGATAAGGTTTAA

Protein Sequence: >RC220070 representing NM_018996
 Red=Cloning site Green=Tags(s)

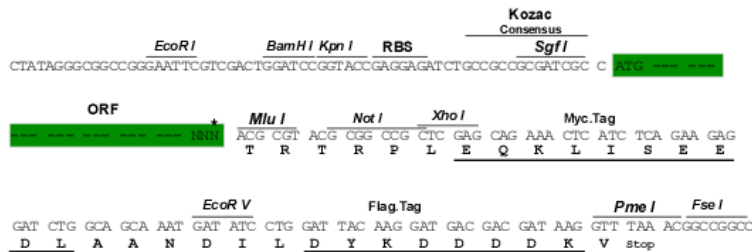
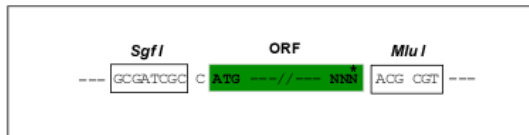
MATGSAQGNFTGHTKKTNGNNGTNGALVQSPSNQALGAGGANSNGSAARVWGVATGSSSGLAHCSVSSGG
 DGKMDTMI GDGRSQNCWASNSNAGINLNLNPNANPAAWPVLGHEGTVATGNPSSICSPVSAIGQNMGNQ
 NGNPTGTLGAWGNLLPQESTEPQTSTSQNVSFSAQPQNLNTDGNPNTNPMNSSPNINAMQTNGLPNWGM
 AVGMGAIIPPHLQGLPGANGSSVSQVSGGSAEGISNSVWGLSPGNPATGNSNSGF SQNGDVTNSALSAK
 QNGSSSAVQKEGSGGNWSDGPPAGPGLAWGRSGNNGVGNIHSGAWGHP SRSTSNGVNGEWGKPPNQH
 SNSDINGKGTGWESPSVTSQNPTVQPGGHEMNSWAKAAASSGTTASEGSSDGSNGHNEGSTGREGTGEGR
 RRDKGIIDQGHILPRNDLDPVLSNTGWGQTPVKQNTAWEFEE SPRSERKNDNGTEAWGCAATQASNSG
 GKNDGSI MNSTNTSSVSGWVNAPPAVPANTGWGDSNNKAPSGPGVWGDSSSTAVSTAAA AKSGHAWSG
 AANQEDKSPTWGEPPKPKSQHWGDGQRSNPAWSAGGDWADSSSVLGHLDGKKNKSGWDADSNRSGSGW
 NDTTRSGNSGWNSTNTKANPGTNWGETLKPQPQNWASKPQDNNVSNWGGAA SVKQTGTGWIGGPVVK
 QKDSSEATGWEEPSPSIRRKMEIDDGTSAWGDP SNYNNKTVNMWDRNPNVIQSSSTTTNTTTTTTTT SN
 TTHRVETPPPHQAGTQLNRSPLLGPGRKVSSGWGEMPNVHKTENSWGEPSSPSTLVDNGTAAWGKPPSS
 GSGWGDHPAEPVAFGRAGAPVAASALCKPASKMQEGWGGDEMNLSTSQWEDEEGDVWNNAASQEST
 SSCSSWGNAPKKGLQKGMKTSKGQDEAWIMSRLIKQLTDMGFPREPAEEALKSNMNL DQMSALLEKKV
 DVDKRGLGVTDHNGMAAKPLGCRPPISKESVDRPTFLDKDGGLVEEPTSPFLPSPSLKLP LSHSALPS
 QALGGIASGLGMQNLN SSRQIPSGNLGMFGNSGAAQARTMQPPQPPVQPLNSSQPSLRAQVPQFLSPQV
 QAQLLQFAAKNIGLNPALLTSPINPQHMTMLNQLYQLQLAYQRLIQQQMLQAQRNVSGSMRQQEQVAR
 TITNLQQIQHQHRLAQAALLVKQPPPPPPPHLSLHPSAGKSAMDSFP SHPQTPGLPDLQTKEQSSPN
 TFAPYPLAGLNPNMVNNSMDMTGGLSVKDPSQSQRLPQWTHPNSMDNLP SAASPLEQNP SKHGAIPGGL
 SIGPPGKSSIDDSYGRYDLIQNSESPASPPVAVPHSWSRAKSDSDKI SNGSSINWPPEFHPGV PWKGLQN
 IDPENDPDVTPGSVPTGPTINTTIQDVNRYLLKSGGKLS DIKSTWSSGPTSHTQASLSHELWKVPRNSTA
 PTRPPPGLTNPKPSSTWGASPLGWTSSYSSGSAWSTDTSGRTSSWL VLRNLTPQIDGSTLRTLCLQHGPL
 ITFHLNLTQGNVVRYSKEEAAKAQKSLHMCVLGNTTILAEFAGEEEVNRFLAQGQALPPTSSWQSSSA
 SSQPRLSAAGSSHGLVRSDAGHWNAPCLGGKGSSELLWGGVPQYSSSLWGPPSADDSRVIGSPTPLTTL
 PGDLLSGESL

TRTRPLEQKLISEEDLAANDILDYKDDDDKV

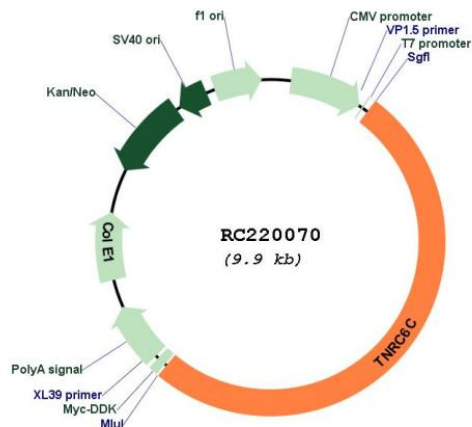
Restriction Sites:
Cloning Scheme:

Sgfl-MluI

Cloning sites used for ORF Shuttling:



* The last codon before the Stop codon of the ORF

Plasmid Map:


ACCN: NM_018996

ORF Size: 5070 bp

OTI Disclaimer: The molecular sequence of this clone aligns with the gene accession number as a point of reference only. However, individual transcript sequences of the same gene can differ through naturally occurring variations (e.g. polymorphisms), each with its own valid existence. This clone is substantially in agreement with the reference, but a complete review of all prevailing variants is recommended prior to use. [More info](#)

OTI Annotation: This clone was engineered to express the complete ORF with an expression tag. Expression varies depending on the nature of the gene.

Components: The ORF clone is ion-exchange column purified and shipped in a 2D barcoded Matrix tube containing 10ug of transfection-ready, dried plasmid DNA (reconstitute with 100 ul of water).

Reconstitution Method:

1. Centrifuge at 5,000xg for 5min.
2. Carefully open the tube and add 100ul of sterile water to dissolve the DNA.
3. Close the tube and incubate for 10 minutes at room temperature.
4. Briefly vortex the tube and then do a quick spin (less than 5000xg) to concentrate the liquid at the bottom.
5. Store the suspended plasmid at -20°C. The DNA is stable for at least one year from date of shipping when stored at -20°C.

RefSeq: [NM_018996.3](#), [NP_061869.2](#)

RefSeq Size: 9686 bp

RefSeq ORF: 5073 bp

Locus ID: 57690

UniProt ID: [Q9HCJ0](#)

Cytogenetics: 17q25.3

Protein Families: Druggable Genome

MW: 176 kDa

Gene Summary: Plays a role in RNA-mediated gene silencing by micro-RNAs (miRNAs). Required for miRNA-dependent translational repression of complementary mRNAs by argonaute family proteins. As scaffolding protein associates with argonaute proteins bound to partially complementary mRNAs and simultaneously can recruit CCR4-NOT and PAN deadenylase complexes. [UniProtKB/Swiss-Prot Function]