

Product datasheet for **RC220064**

SEZ6L2 (NM_201575) Human Tagged ORF Clone

Product data:

Product Type:	Expression Plasmids
Product Name:	SEZ6L2 (NM_201575) Human Tagged ORF Clone
Tag:	Myc-DDK
Symbol:	SEZ6L2
Synonyms:	BSRPA; PSK-1
Mammalian Cell Selection:	Neomycin
Vector:	pCMV6-Entry (PS100001)
E. coli Selection:	Kanamycin (25 ug/mL)



[View online »](#)

ORF Nucleotide Sequence:

>RC220064 representing NM_201575
 Red=Cloning site Blue=ORF Green=Tags(s)

TTTTGTAATACGACTCACTATAGGGCGGCCGGGAATTCGTCGACTGGATCCGGTACCGAGGAGATCTGCC
 GCC**GCGATCGCC**

ATGGGGACTCCCAGGGCCAGCACCCGCCCTCCCAGCTGCTGTTCTAATTCTGCTGAGCTGTCCCT
 GGATCCAGGGTCTGCCCCGAAGGAGGAGGAGATATTGCCAGAGCCTGGAAGTGAGACCCCCACGGTGGC
 CTCTGAGGCCCTGGCTGAACTGCTTCATGGGGCCCTGCTGAGGAGGGGCCAGAGATGGGCTACCTGCCA
 GGATCTGATCCGGACCCACGCTAGCCACCCCTCCGGCCGGCCAGACTCTCGCAGTGCCCTCCCTGCCAC
 GGGCCACTGAGCCGGGGACAGGGCCTCTGACAACAGCCGTACCCCTAACGGGGTCAGGGGGGACAGGCC
 CACTGCGCAGAACTGCTGACCCCGCCCCAGGAACCACAGCCCCACCCACCCAGCCCTGCCTCCCCA
 GGGCCTCCCTTGGCCCTGAGGGAGGAGGAGGAGACGACGACCACCATCATCACCACGACAAGTGTAA
 CCACTACGGTGACCAGCCAGTTCTGTGTAATAACAACATCTCCGAGGGCGAAGGGTATGTGGAGTCTCC
 AGATCTGGGGAGCCCGTCAGCCGACCCTGGGGCTCCTGGACTGCACCTACAGCATCCATGTCTACCT
 GGTACGGCATTGAGATCCAGGTGCAGACGCTGAACCTGTCACAGGAAGAGGAGCTCCTGGTGTGGCTG
 GTGGGGATCCCCAGGCCTGGCCCCGACTCCTGGCCAACCTATCCATGCTGGAGAAGGACAAGTCTCT
 TCGGAGCCCAACCAACCGGCTGCTTCTGCACCTCCAGAGCCACGGGTCCCAAGGGGCGGTGGCTTCAGG
 ATCCACTATCAGGCCTACCTCCTGAGCTGTGGCTTCCCTCCCCGGCCGGCCATGGGGACGTGAGTGTGA
 CGGACCTGCACCTGGGGCACTGCCACCTTCACTGTGATTCGGGTACCAGCTGCAGGGAGAGGAGAC
 CCTCATCTGCCTCAATGGCACCCGGCCATCCTGGAACGGTGAAACCCCAAGCTGCATGGCATCCTGTGGT
 GGCAACATCCACAATGCCACCTGGGCCGATCGTGTCCCAGAGCCTGGGGAGCCGTAGGGCCCAACC
 TCACCTGCCGTTGGGTCATTGAAGCAGCTGAGGGGCGCCGGCTGCACCTGCACCTTGAAGGGTCTCGCT
 GGATGAGGACAATGACCGGCTGATGGTGGCTCAGGGGGCAGCCCCCTATCCCCCGTGATCTATGATTTCG
 GACATGGACGATGTCCCCGAGCGGGTCTCATCAGTGACGCCAGTCCCTCTACGTGGAGCTGCTGTGAG
 AGACACCTGCCAATCCCCTGCTGTTAAGCCTTCGATTTGAAGCCTTTGAGGAGGATCGTCTTCGCCCC
 CTTCTGGCACATGGAATGTCACCTACCACGGACCCTGAGTATCGCCAGGGGCACTGGCAACCTTCTCG
 TGCCTCCAGGATATGCCCTGGAGCCCCCTGGGCCCCCAATGCCATCGAATGTGTGGATCCACAGAAC
 CCCACTGGAACGACACAGAGCCGGCCTGCAAAGCCATGTGTGGAGGGGAGCTGTCGGAACAGCTGGCGT
 GGTCTCTCTCCGACTGGCCCCAGAGCTATAGCCCGGGCAAGACTGCGTGTGGGGCGTGCACGTCCAG
 GAAGAGAAGCGCATCTTGCTCCAAGTTGAGATATTGAATGTGCGGGAAGGGGACATGCTGACGCTGTTCCG
 ACGGGGACGGTCCCAGCGCCGAGTCTTGGCCAGCTGCGGGGACCTCAGCCGCGCCGCCCTTCTCTC
 CTCTGGGCCCCGACCTCACACTGCAGTTTCAGGCACCGCCCGGGCCCCAAATCCAGGCCTGGGCCAGGGC
 TTCGATTTGCACTTCAAAGAGGTCCCGAGGAACGACACGTCGCCCGAGCTGCCACCTCCGGAGTGGGGCT
 GGAGAACGGCATCCCACGGGGACCTGATCCGGGGCACGGTGTACCTACCAGTGGCAGCCTGGCTACGA
 GCTGCTAGGCTCCGACATTTCACTTGGCAGTGGGACCTGCTTTGGAGCGCCGCGCCGCCCTGCCAA
 AAGATCATGACTTGTGCTGACCTGGCGAGATTGCCAACGGGCACCGCACCGCTCGGACGCCGGCTTCC
 CCGTTGGCTCCCACGTCCAGTACCGTGCCTGCCAGGTTACAGCCTCGAGGGGGCAGCCATGCTCACCTG
 CTACAGCCGGGACACAGGCACACCAAGTGGAGCGATAGGGTCCCCAAATGCGCCTTGAAGTACGAGCCG
 TGCTGAACCCGGGGTTCCCGAGAATGGCTACCAGACGCTGTACAAGCACCACTACCAGGGGGGCGAGT
 CTCTGCGCTTCTCTGCTATGAGGGCTTTGAGCTTATCGCGAGGTCACCATCACCTGTGTGCCCGGCCA
 CCCCTCCAGTGGACCAGCCAGCCCCACTCTGCAAAGTGACCCAGACCAGATCCATACGGCAGCTG
 GAAGGGGGGAACCTGGCCCTGGCCATCCTGCTGCCTTAGGCTTGGTCATTGTCTCGGCAGTGGCGTTT
 ACATCTACTACCAAGCTTCAGGGAAAGTCCCTTTTCGGCTTCTCGGGTCCCCTCTACAGCCCCAT
 CACCGTGGAGTCGGACTCAGCAACCCGCTGTATGAAGCTGGGGATACCGGGGAGTATGAAGTTTCCATC

ACGCGTACGGGCGGCTCGAGCAGAACTCATCTCAGAAGAGGATCTGGCAGCAAATGATATCTGGATT
 ACAAGGATGACGACGATAAGGTTTAA

Protein Sequence: >RC220064 representing NM_201575
 Red=Cloning site Green=Tags(s)

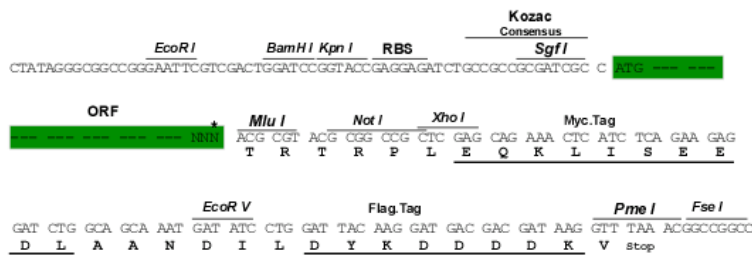
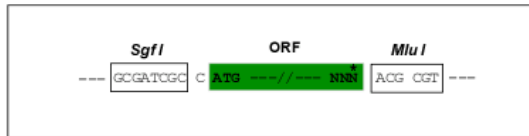
MGTPRAQHPPPPQLFLILLSCPWIQGLPLKEEILPEPGSETPTVASEALAE LLHGALLRRGPEMGYLP
 GSDPDPTLATPPAGQTLAVPSLPRATEPGTGPLTTAVTPNGVRGAGPTAPELLTPPPGTTAPPPSPASP
 GPPLGPEGEEETTTTIIITTTTITTTTSPVLCNNNISEGEGYVESPDLGSPVSRTLGLLDCTYSIHVYP
 GYGIEIQVQTLNLSQEEELLVLAGGSPGLAPRLLANSSMLGEGQVLRSPNRLLLHFQSPRVPRGGGFR
 IHYQAYLLSCGFPPRPAHGDVSVTDLHPGGTATFHCDSGYQLQGEETLICLNTRPSWNGETPSCMASC
 GNIHNATLGRIVSPEPGGAVGNLTCRWVIEAAEGRRLHLHFERVSLDEDNDRMLMVRSGGSPLSPVIYDS
 DMDDVPERGLISDAQSLYVELLSETPANPLLLSLRFEAFEEDRCFAPFLAHGNVTTDPEYRPGALATFS
 CLPGYALEPPGPPNAIECVDPTEPHWNDTEPACKAMCGGELSEPAGVVLSPDWPQSYSPGQDCVWGVHVQ
 EEKRILLQVEILNVREGDMLTLFDGDGPSARVLAQLRGPQPRRLLSSGPDLTQFQAPPGPPNPLGQG
 FVLHFKEVPRNDTCPELPPPEWGWRTASHGDLIRGTVLTYQCEPGYELLGSDILTCQWDL SWSAAPPACQ
 KIMTCADPGEIANGHRTASDAGFPVGS HVQYRCLPGYSLEGAAMLTCYSRDTGTPKWSDRVPKALKYEP
 CLNPGVPENGYQTL YKHHYQAGESLRFFCYEGFELIGEVTITCVPGHPSQWTSQPPLCKVTQTTDPSRQL
 EGGNLALAILLPLGLVIVL GSGVYIYYTKLQGKSLFGFSGSHSYSPITVESDFSNPLYEAGDTREYEVSI
 TRTRPLEQKLISEEDLAANDILDYKDDDDKV

Chromatograms: https://cdn.origene.com/chromatograms/mg4206_f02.zip

Restriction Sites: SgfI-MluI

Cloning Scheme:

Cloning sites used for ORF Shuttling:

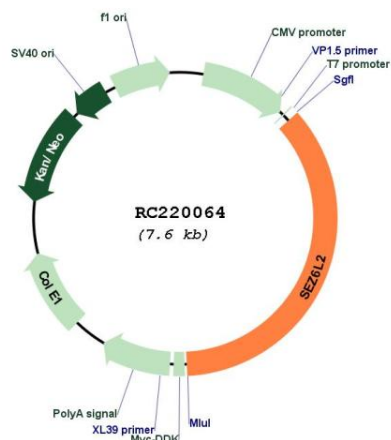


* The last codon before the Stop codon of the ORF

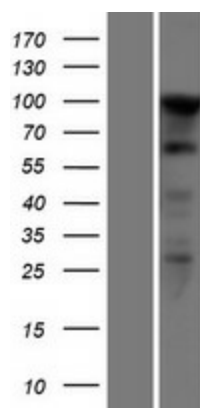
ACCN: NM_201575

ORF Size:	2730 bp
OTI Disclaimer:	The molecular sequence of this clone aligns with the gene accession number as a point of reference only. However, individual transcript sequences of the same gene can differ through naturally occurring variations (e.g. polymorphisms), each with its own valid existence. This clone is substantially in agreement with the reference, but a complete review of all prevailing variants is recommended prior to use. More info
OTI Annotation:	This clone was engineered to express the complete ORF with an expression tag. Expression varies depending on the nature of the gene.
Components:	The ORF clone is ion-exchange column purified and shipped in a 2D barcoded Matrix tube containing 10ug of transfection-ready, dried plasmid DNA (reconstitute with 100 ul of water).
Reconstitution Method:	<ol style="list-style-type: none">1. Centrifuge at 5,000xg for 5min.2. Carefully open the tube and add 100ul of sterile water to dissolve the DNA.3. Close the tube and incubate for 10 minutes at room temperature.4. Briefly vortex the tube and then do a quick spin (less than 5000xg) to concentrate the liquid at the bottom.5. Store the suspended plasmid at -20°C. The DNA is stable for at least one year from date of shipping when stored at -20°C.
RefSeq:	NM_201575.4
RefSeq Size:	3162 bp
RefSeq ORF:	2733 bp
Locus ID:	26470
UniProt ID:	Q6UXD5
Cytogenetics:	16p11.2
Protein Families:	Druggable Genome, Transmembrane
MW:	97.4 kDa
Gene Summary:	This gene encodes a seizure-related protein that is localized on the cell surface. The gene is located in a region of chromosome 16p11.2 that is thought to contain candidate genes for autism spectrum disorders (ASD), though there is no evidence directly implicating this gene in ASD. Increased expression of this gene has been found in lung cancers, and the protein is therefore considered to be a novel prognostic marker for lung cancer. Alternative splicing of this gene results in multiple transcript variants. [provided by RefSeq, Aug 2011]

Product images:



Circular map for RC220064



Western blot validation of overexpression lysate (Cat# [LY404472]) using anti-DDK antibody (Cat# [TA50011-100]). Left: Cell lysates from untransfected HEK293T cells; Right: Cell lysates from HEK293T cells transfected with RC220064 using transfection reagent MegaTran 2.0 (Cat# [TT210002]).