

## Product datasheet for **RC220048**

### Amphiphysin (AMPH) (NM\_139316) Human Tagged ORF Clone

#### Product data:

Product Type:	Expression Plasmids
Product Name:	Amphiphysin (AMPH) (NM_139316) Human Tagged ORF Clone
Tag:	Myc-DDK
Symbol:	Amphiphysin
Synonyms:	AMPH1
Mammalian Cell Selection:	Neomycin
Vector:	pCMV6-Entry (PS100001)
E. coli Selection:	Kanamycin (25 ug/mL)



[View online »](#)

**ORF Nucleotide Sequence:**

>RC220048 representing NM\_139316  
 Red=Cloning site Blue=ORF Green=Tags(s)

TTTTGTAATACGACTCACTATAGGGCGGCCGGAATTCGTCGACTGGATCCGGTACCGAGGAGATCTGCC  
 GCC**CGCATCGCC**

ATGCGCCGACATCAAGACGGGCATCTTCGCCAAGAAGCTCCAGAAGCGACTCAACCGCGCGCAGGAAAAGG  
 TCCTCCAAAAGCTGGGGAAAGCTGATGAGACAAAAGACGAACAGTTTCAAGAATATGTCCAGAACTTCAA  
 ACGGCAAGAAGCAGAGGGTACCAGACTTACGCGAGAAGCTCCGAGGATATTTAGCAGCAATCAAAGGCATG  
 CAGGAGGCCTCCATGAAGCTCACAGAGTCGCTGCATGAAGTCTATGAGCCTGACTGGTATGGGCGGGGAAAG  
 ATGTGAAAATGGTTGGTGAAGAAATGTGATGTGCTGTGGGAAGACTTCCATCAAAAAGCTGGTATGGGTC  
 CTTGCTAACACTGGATACCTACCTGGGGCAATTTCTGACATAAAGAATCGCATCGCCAAGCGCAGCAGG  
 AAGCTAGTGGACTATGACAGTGCCCGCCACCCTCTGGAAGCTCTGCAGAGCTCCAAGAGGAAGGATGAGA  
 GTCGAATCTTAAGGCAGAAGAAGAATTCAGAAAAGCACAGAAAGTGTGTTGAAGAGTTTAACTGGACTT  
 ACAAGAAGAGTTACCATCATTATGGTCAAGACGAGTTGGATTTTATGTTAATACTTTCAAAAAGCTCTCC  
 AGCCTTGAAGCCAAGTTTCATAAGGAAATTCGCGTGTCTTGGCCAAAAGTATGAAGTATGACAAAAC  
 TGGGTGACCAGCAGCCGACAAGGCCTTACCATCCAAGGAGCGCCAGTATTCCGGTCTCTCCGCAT  
 TGCAAAGACCATCACCGCCTGAGGAGCCTTACCCCTCCCGAGCCCGCAGCAAGTCCAAATCATACA  
 TTAGCACCTGCGTCTCCCGCACCAGCAGGCCTCGGTACCTTACAGACAAGGAAAGGGCTCCTGTCC  
 CACCTCTACCTAAAGTCAACCCGACAAGGAAGTGCAGCAGGAGAATCATCAGTTTCTTTGAGGACAA  
 CTTTGTTCAGAAATCAGTGTGACAACCTTCCAGAAATGAAGTCCCTGAGGTGAAGAAAGAGGAGACT  
 TTGCTGGATCTGGACTTTGATCCTTTCAAGCCCGAGGTGACACCTGCAGGTTCTGCTGGAGTGACCCACT  
 CACCCATGTCTCAGACATTGCCCTGGGACCTATGGACGACAAGCACTGATTTGGTACAGCCGGCTTCTGG  
 TGGTTCAATTAATGGATTCACACAGCCCCAGGATACTTCAATTCACAATGCAGACAGACCAGAGTATG  
 ATCTGCAACTTGATCATACCTGGAGCTGATGCTGATGCAGCTGTTGGAACCTTGGTGTGACGAGCTGAGG  
 GGGCCCCAGGAGAGGAAGCAGAGGCGGAGAAGGCCACTGTCCCTGCCGGGAAGGAGTAAGTTTAGAGGA  
 GGCCAAAATTGGAAGTGAACCCTGAGGGTGCAGAGAGTGCCCAACCTGAAGCAGAGGAGCTCGAAGCA  
 ACAGTGCCTCAGGAGAAGGTCATTCCTTCGGTGGTCATAGAGCCTGCCTCAACCATGAAGAGGAAGGAG  
 AAAACGAAATAACTATAGGTGCAGAGCCCAAGGAGACCACCGAGGACGCGGCTCCTCCGGGCCCCACCAG  
 CGAGACACCGGAGCTGGCTACGGAGCAGAAGCCTATCCAGGACCCTCAGCCACGCCTTCTGCACCAGCC  
 ATGGGGGCTGCTGACCAGCTAGCATCTGCAAGGGAGGCCTCTCAGGAATTGCCTCCTGGCTTCTCTACA  
 AGGTGGAAACACTGCATGATTTTGGAGCAGCAAATTCGATGAACCTTACCTTACAAAGGGGTGATGTGGT  
 GCTGGTGGTCCCCTCAGATTCAGAAGCTGATCAGGATGCAGGCTGGCTGGTGGGAGTGAAGGAATCAGAC  
 TGGCTTCACTACAGAGACCTTGCCACCTACAAAGGCCTTTTCCAGAGAAGTTCACCCGACGCTTAGAT

**ACGCGT**ACGCGGCCGCTCGAGCAGAAACTCATCTCAGAAGAGGATCTGGCAGCAAATGATATCCTGGATT  
 ACAAGGATGACGACGATAAGGTTTAA



**Reconstitution Method:**

1. Centrifuge at 5,000xg for 5min.
2. Carefully open the tube and add 100ul of sterile water to dissolve the DNA.
3. Close the tube and incubate for 10 minutes at room temperature.
4. Briefly vortex the tube and then do a quick spin (less than 5000xg) to concentrate the liquid at the bottom.
5. Store the suspended plasmid at -20°C. The DNA is stable for at least one year from date of shipping when stored at -20°C.

**RefSeq:** [NM\\_139316.2](#), [NP\\_647477.1](#)

**RefSeq Size:** 3161 bp

**RefSeq ORF:** 1962 bp

**Locus ID:** 273

**UniProt ID:** [P49418](#)

**Cytogenetics:** 7p14.1

**Domains:** SH3, BAR

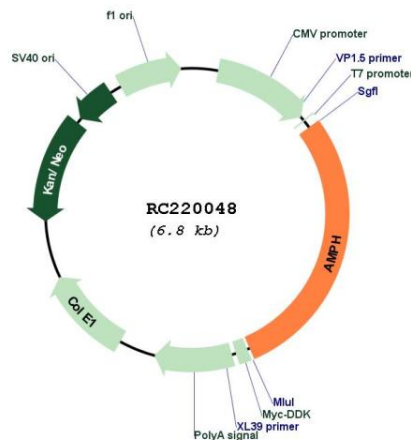
**Protein Families:** Secreted Protein

**Protein Pathways:** Fc gamma R-mediated phagocytosis

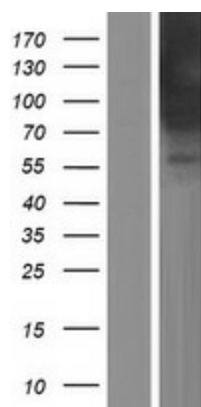
**MW:** 71.7 kDa

**Gene Summary:** This gene encodes a protein associated with the cytoplasmic surface of synaptic vesicles. A subset of patients with stiff-man syndrome who were also affected by breast cancer are positive for autoantibodies against this protein. Alternate splicing of this gene results in two transcript variants encoding different isoforms. Additional splice variants have been described, but their full length sequences have not been determined. A pseudogene of this gene is found on chromosome 11.[provided by RefSeq, Nov 2010]

### Product images:



Circular map for RC220048



Western blot validation of overexpression lysate (Cat# [LY408295]) using anti-DDK antibody (Cat# [TA50011-100]). Left: Cell lysates from untransfected HEK293T cells; Right: Cell lysates from HEK293T cells transfected with RC220048 using transfection reagent MegaTran 2.0 (Cat# [TT210002]).