

Product datasheet for **RC220045**

splicing factor 1 (SF1) (NM_201995) Human Tagged ORF Clone

Product data:

Product Type:	Expression Plasmids
Product Name:	splicing factor 1 (SF1) (NM_201995) Human Tagged ORF Clone
Tag:	Myc-DDK
Symbol:	splicing factor 1
Synonyms:	BBP; D11S636; MBBP; ZCCHC25; ZFM1; ZNF162
Mammalian Cell Selection:	Neomycin
Vector:	pCMV6-Entry (PS100001)
E. coli Selection:	Kanamycin (25 ug/mL)



[View online »](#)

ORF Nucleotide
Sequence:

>RC220045 representing NM_201995
 Red=Cloning site Blue=ORF Green=Tags(s)

TTTTGTAATACGACTCACTATAGGGCGGCCGGGAATTCGTCGACTGGATCCGGTACCGAGGAGATCTGCC
 GCC**CGGATCGCC**

ATGGCGACCGGAGCGAACGCCACGCCGTTGGACTTCCCAAGTAAGAAGCGGAAGAGGAGCCGCTGGAACC
 AAGACACAATGGAACAGAAGACAGTGATTCCAGGAATGCCTACAGTTATTCCCCCTGGACTTACTCGAGA
 ACAAGAAAGAGCTTATATAGTGCAACTGCAGATAGAAGACCTGACTCGTAAACTGCGCACAGGAGACCTG
 GGCATCCCCCTAACCTGAGGACAGGTCCCCTTCCCCTGAGCCCATCTACAATAGCGAGGGGAAGCGGC
 TTAACACCCGAGAGTTCCGCACCCGAAAAAGCTGGAAGAGGAGCGGCACAACCTCATCACAGAGATGGT
 TGCCTCAATCCGGATTTCAAGCCACCTGCAGATTACAAACCTCCAGCAACACGTGTGAGTGATAAAGTC
 ATGATTCCACAAGATGAGTACCCAGAAATCAACTTTGTGGGGTCTCATCGGGCCAGAGGGAACACCC
 TGAAGAACATAGAGAAGGAGTGCATGCCAAGATTATGATCCGGGGAAAGGGTCTGTGAAAGAAGGGAA
 GGTTGGGCGCAAAGATGGCCAGATGTTGCCAGGAGAAGATGAGCCACTTCATGCCCTGGTACTGCCAAT
 ACAATGGAGAACGTCAAAAAGGCAGTGGAACAGATAAGAAACATCCTGAAGCAGGGTATCGAGACTCCAG
 AGGACCAGAATGATCTACGGAAGATGCAGCTTCGGGAGTTGGCTCGCTTAAATGGGACCCCTTCGGGAAGA
 CGATAACAGGATCTTAAGACCCTGGCAGAGCTCAGAGACCCGAGCATTACCAACACCACAGTGTGTACC
 AAGTGTGGAGGGGCTGGCCACATTGCTTCAGACTGTAAATTCAAAGGCCTGGTGTCTCAGTCAGCTC
 AGGATAAAGCACGGATGGATAAAGAATATTTGTCCTCATGGCTGAAGTGGTGAAGCACCTGTCCCAGC
 ATCTGTGGGCTCCACCTCTGGCCCTGCCACCACACCCCTGGCCAGCGCACCTCGTCTGTGCTCCCGCC
 AACACCCACCTCCACCGTCTCTCATGTCTACCACCCAGAGCCGCCACCCCTGGATGAATTCGGCCCTT
 CAGAGAGTCGGCCCTACCACGGCATGCATGGAGTGGTCTGGTGGGCCCCGGAGGTGGCCCCACAGCTT
 CCCACACCCATTACCCAGCCTGACAGGTGGGCATGGTGGACATCCCATGCAGCACAACCCCAATGGACCC
 CCACCCCTTGGATGCAGCCACCACCACCCGATGAACCAGGGCCCCACCCCTCTGGGACCATGGCC
 CTCTCCAATGGATCAGTACCTGGGAAGTACGCTGTGGGCTCTGGGCTATCGCTGCATCAAGGAAA
 AGGTATGATGCCGCCACCACCTATGGGCATGATGCCGCCGCCGCCGCCCTCCAGTGGGCAGCCCCCA
 CCCCCTCCCTCTGGTCTTCCCCCATGGCAACAACAGCAGCAGCAGCCTCCGCCACCCCTCCGCCCA
 GCAGCAGTATGGCTTCCAGTACCCCTTGGCATGGCAGCAAAATACGACGACTACCACCACGAGCGCTGG
 CACAGGGTCCATCCGCCATGGCAACAGCAGCAGGCGGCTGCCGAGCTTCTCCAGGAGCCCTCAGATG
 CAAGGCAACCCCACTATGGTGGCCCTGCCCCCGGGTCCAGCCGCTCTGCCGCTGGGGCCCCCTCCCC
 CTCCGCCGCTCCACCGCTGGTTCGCCGGCATGATGATCCCTCCCCCGGGCGGCGATGGCCCCGAGCCA
 TGAGAGTGAGGACTTTCCGCGCCATTGGTGACCTTCCAGGCAGACAGCCTCAGCAACGCCCTGGTGG
 ACAGGATGGTTCGGCAAAGCAGCC

ACGCGTACGCGGCCGCTCGAGCAGAACTCATCTCAGAAGAGGATCTGGCAGCAATGATATCCTGGATT
 ACAAGGATGACGACGATAAGGTTTAA

Protein Sequence: >RC220045 representing NM_201995
 Red=Cloning site Green=Tags(s)

MATGANATPLDFPSKRRKRSRWNQDTMEQKTVIPGMPTVIPPGLTREQERAYIVQLQIEDLTRKLRTGDL
 GIPNPEDRSPSPPEIYNSEGKRLNTRFRTRKLEEEERHNLITEMVALNPDFKPPADYKPPATRVSDKV
 MIPQDEYPEINFVGLLIGPRGNTLKNIEKECNAKIMIRGKGSVKEGKVGKRDGQMLPGEDEPLHALVTAN
 TMENVKKAVEQIRNILKQGIETPEDQNDLRKMQRLRELARLNGTLREDDNRILRPWQSSETRSITNTTVCT
 KCGGAGHIASDCKFQRPGDPQSAQDKARMDKEYLSLMAELGEAPVPASVSGTSGPATTPLASAPRPAAPA
 NNPPPPSLMSTTQSRPPWMNSGPSESRPYHGMHGGGGPGGGPHSFPHPLPSLTGGHGGHPMQHNPNGP
 PPPWMQPPPPMNQPHPPGHGPPPMQYLGSTPVGSGVYRLHQKGMMPPPPMGMPPPPPPSGQPP
 PPPSGLPPWQQQQQPPPPPPSSMASSTPLPWQNTTTTTTTSAGTGSIPPWQQQAAAAASPGAPQM
 QGNPTMVPLPPGVQPLPPGAPPPPPPPPGSAGMMIPPRGGDGPSESEDFPRPLVTLGRQPQQRPW
 TGWFGKAA

TRTRPLEQKLI SEEDLAANDILDYKDDDDKV

Chromatograms: https://cdn.origene.com/chromatograms/mk8070_h03.zip

Restriction Sites: SgfI-MluI

Cloning Scheme:



ACCN: NM_201995

ORF Size: 1914 bp

OTI Disclaimer: The molecular sequence of this clone aligns with the gene accession number as a point of reference only. However, individual transcript sequences of the same gene can differ through naturally occurring variations (e.g. polymorphisms), each with its own valid existence. This clone is substantially in agreement with the reference, but a complete review of all prevailing variants is recommended prior to use. [More info](#)

OTI Annotation: This clone was engineered to express the complete ORF with an expression tag. Expression varies depending on the nature of the gene.

Components: The ORF clone is ion-exchange column purified and shipped in a 2D barcoded Matrix tube containing 10ug of transfection-ready, dried plasmid DNA (reconstitute with 100 ul of water).

Reconstitution Method:

1. Centrifuge at 5,000xg for 5min.
2. Carefully open the tube and add 100ul of sterile water to dissolve the DNA.
3. Close the tube and incubate for 10 minutes at room temperature.
4. Briefly vortex the tube and then do a quick spin (less than 5000xg) to concentrate the liquid at the bottom.
5. Store the suspended plasmid at -20°C. The DNA is stable for at least one year from date of shipping when stored at -20°C.

RefSeq: [NM_201995.3](#)

RefSeq Size: 3095 bp

RefSeq ORF: 1917 bp

Locus ID: 7536

UniProt ID: [Q15637](#)

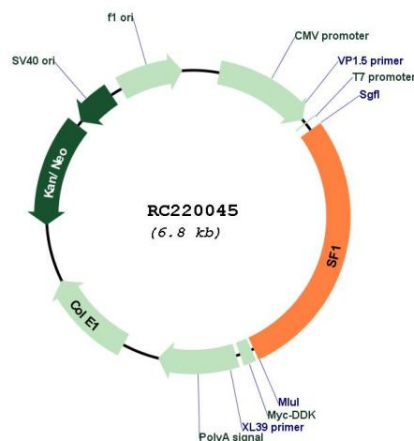
Cytogenetics: 11q13.1

Protein Families: Transcription Factors

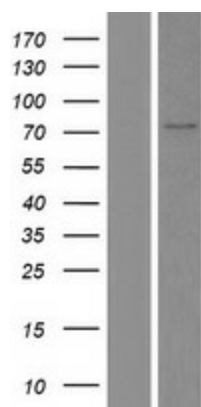
MW: 68.5 kDa

Gene Summary: This gene encodes a nuclear pre-mRNA splicing factor. The encoded protein specifically recognizes the intron branch point sequence at the 3' splice site, together with the large subunit of U2 auxiliary factor (U2AF), and is required for the early stages of spliceosome assembly. It also plays a role in nuclear pre-mRNA retention and transcriptional repression. The encoded protein contains an N-terminal U2AF ligand motif, a central hnRNP K homology motif and quaking 2 region which bind a key branch-site adenosine within the branch point sequence, a zinc knuckles domain, and a C-terminal proline-rich domain. Alternative splicing results in multiple transcript variants. [provided by RefSeq, Oct 2016]

Product images:



Circular map for RC220045



Western blot validation of overexpression lysate (Cat# [LY404503]) using anti-DDK antibody (Cat# [TA50011-100]). Left: Cell lysates from untransfected HEK293T cells; Right: Cell lysates from HEK293T cells transfected with RC220045 using transfection reagent MegaTran 2.0 (Cat# [TT210002]).