

Product datasheet for **RC220044**

CCDC138 (NM_144978) Human Tagged ORF Clone

Product data:

Product Type:	Expression Plasmids
Product Name:	CCDC138 (NM_144978) Human Tagged ORF Clone
Tag:	Myc-DDK
Symbol:	CCDC138
Mammalian Cell Selection:	Neomycin
Vector:	pCMV6-Entry (PS100001)
E. coli Selection:	Kanamycin (25 ug/mL)



[View online »](#)

ORF Nucleotide
Sequence:

>RC220044 representing NM_144978
Red=Cloning site Blue=ORF Green=Tags(s)

TTTTGTAATACGACTCACTATAGGGCGGCCGGAATTCGTCGACTGGATCCGGTACCGAGGAGATCTGCC
GCC**CGGATCGCC**

ATGGAGCCGAGGGTCGTCAAGCCACCGGGCAGGATTTAGTAGTGGAGAGTCTCAAAGCCGCTACGGAC
TCGGGGCAGCTGCCCGACGAGTATGATTTTTCAAATTTTTATCAGTCTAAGTATAAGAGAAGAACTCT
AACCTCCCGAGGTGATTTGGATATCTACTCTGGAGATAAAGTTGGTTCATCGTTAAAATATTCTGATGAA
AGCAAGCATTGTAGAACCACATTGGGCAGCTTATTCAAGCACGTAATGTGAATTGCCTAGATGATGAAC
TGGATTCTTTCCATGATTTGAAGAAACAGGAAACAGAAGAAGAGTTAATTGAAAAATGATTATAGAGTTAG
TACCTCGAAAATAACCAAGCAGTCTTTAAAGAAATAGAAAAAGTTGCCTTGCCAACTAATACGACCTCA
TCGAGACCTCGGACTGAGTGTGTAGTGTGCAGGTGACTCTCCTTTGAAACCTGCAGCTGTCCAAAAT
CTAAAGCATCAGACAAGCGGAGTTACTTCCACATCAGATCAGTCAGATATATGACGAATATTTTCAGAT
ACATCTGAAATTGCAGTGTGAACTGCAGCACAACAGAAATTTGCTGAAGAACTTCAAAGCGAGAACGT
TTTTTACTTGAAGAGAACAACTGCTTTTCAGACATGAAAATGCCTTGAGTAAAATTAAGGTGTTGAAG
AAGAGGTTCTTACAAGATTTCAAATTATAAAGAGCAGCATGATGCAGAAGTTGAACACTTAACCGAAGT
TCTTAAGGAAAAGAAATAAGAAACCAAGAGACTGAGGTCTCTTTTGATGCATTGAAAGAATTGAATGAT
ACCTTAAAAAACAGTTAAATGAAGCAAGTGAAGAAAACAGGAAGATAGACATTCAGGCTAAAAGAGTTC
AAGCACGTTTAGATAATTTACAGAGGAAGTACGAGTTTATGACAATACAGAGATTGAAAGGAAGTTCCCA
TGCTGTTTCATGAAATGAAAAGTTTAAAACAAGAAAAGCACCAGTTTCAAACCTTACAAGGTACCACTT
AATGGGCAAGTTTATGAACTTTTAACTGTCTTCATGGACTGGATTTCCGATCATCATCTTAGCAAAGTGA
AACATGAAGAATCTGGAATGGATGGTAAAAACCACAACCTCAAATTTGCTTCCAGAGAAATGATATTCA
GGAGAAGTGTGTAAGCTTTTGCCTCTAATGACAGAGCAGCTACAGTGGATGCCATTTGTGAATATCAAA
CTTCACGAGCCTTTTGTAAAATTTATATATTGGTCCCTAAGGCAGCTAGATGCTGGAGCACAGCACTCGA
CTATGACATCAACATTGAGGAGATTGGGTGAAGACATTTTTAAAGGAGTGGTAACTAAAGGAATTCAGGA
TAATTCTCACAGCATTCTGTGGAGAATAAACCAAGACAGCTGCTTTCTTAAAGAGCTCCAATTTGCCA
TTGAGATTTTTATCAACCTTAATTGTTCTCAAACAGTCACTCAAGCTGATTACCTGGCTCAGGCATTTG
ATTCTCTTTGTTGGACTTGAAGACAGAAGAAGGAAAAACCTGTTTTTGGAGTATCAGGCTGTTCCAGT
AATATTAAGTCATCTAAGAATATCCAGTAAAGGACTCCTGTCTAATGTTATTGATAGTTTGTCCAGATG
ACGGTGGAACTAAATCCTTGCAGCCTTCTGGAAGCCTGTAGCAACTCTTATTTTTTGTACTTGCT
CTGTGCTGCTTCGAGCCCTAAGCTTGATCTTCAAATACTAGAAAACTCAGTATTATTTACAGAACT
TTCCAAAATCAAGAGTAATAAGAAGCTCTTTGAACTTTTTACGATTCATCTGATGCTTCAAGAAATACAA
AGGACAACAAACCCAGAGCATGCATTTCTGTATTAATCTAAATCAACTCTGTTCAATCTGGGTTTAA
CAAATGTAACCTCCCTGGTCTCCAGTGAAGCCCT

ACGCGTACGCGGCCGCTCGAGCAGAACTCATCTCAGAAGAGGATCTGGCAGCAATGATATCCTGGATT
ACAAGGATGACGACGATAAGGTTTAA

Protein Sequence: >RC220044 representing NM_144978
Red=Cloning site Green=Tags(s)

```
MEPRVVKPPGQDLVVESLKSRYGLGGSCPDEYDFSNFYQSKYKRRTLSPGDLDIYSGDKVGSLSLKYSDE
SKHCRTPLGSLFKHVNVCNLDDELDSFHDLLKKQETEEELIENDYRVSTSKITKQSFKEIEKVALPTNTTS
SRPRTCCSDAGDSPLKPVSCPASKADKRSLLPHQISQIYDELFIHLKLCQETAQQKFAEELQKRER
FLLEREQQLFRHENALSKIKGVVEEVLTRFQIIKEQHDAEVEHLTEVLKEKNKTKRLRSSFDALKELND
TLKKQLNEASEENRKIDIQAKRVQARLDNLQRKYEFMTIQRLKGS SHAVHEMKS LKQEKAPVSKTYK VPL
NGQVYELLTVFMDWISDHHL SKVKHEESGMDGKKPQLKFASQRNDIQEKCVKLLPLMTEQLQWMPFVNIK
LHEPFVKFIYWSLRQLDAGA QHSTMTSTLRR LGEDI FKG VVT KGI QDN SPQHSVENKPKTAAFFKSSNLP
LRF LSTLIVLKTVTQADYLAQAFDSLCLDLKTEEGKTLFLEYQAVPVILSHLRIS SKGLLSNVIDSLLQM
TVESKSLQPFLEACSNLFFRTCSVLLRAPKLDLQILEKLSIILQKLSIKSNKKLFELFTIHLMLQEIQ
RTTNPEHAFLCINLNSTL FNLGLTKCNLSLVSSASP
```

TRTRPLEQKLISEEDLAANDILDYKDDDDKV

Chromatograms: https://cdn.origene.com/chromatograms/mk8020_f03.zip

Restriction Sites: SgfI-MluI

Cloning Scheme:



ACCN: NM_144978

ORF Size: 1995 bp

OTI Disclaimer: Due to the inherent nature of this plasmid, standard methods to replicate additional amounts of DNA in E. coli are highly likely to result in mutations and/or rearrangements. Therefore, OriGene does not guarantee the capability to replicate this plasmid DNA. Additional amounts of DNA can be purchased from OriGene with batch-specific, full-sequence verification at a reduced cost. Please contact our customer care team at custsupport@origene.com or by calling 301.340.3188 option 3 for pricing and delivery.

The molecular sequence of this clone aligns with the gene accession number as a point of reference only. However, individual transcript sequences of the same gene can differ through naturally occurring variations (e.g. polymorphisms), each with its own valid existence. This clone is substantially in agreement with the reference, but a complete review of all prevailing variants is recommended prior to use. [More info](#)

OTI Annotation: This clone was engineered to express the complete ORF with an expression tag. Expression varies depending on the nature of the gene.

Components: The ORF clone is ion-exchange column purified and shipped in a 2D barcoded Matrix tube containing 10ug of transfection-ready, dried plasmid DNA (reconstitute with 100 ul of water).

Reconstitution Method:

1. Centrifuge at 5,000xg for 5min.
2. Carefully open the tube and add 100ul of sterile water to dissolve the DNA.
3. Close the tube and incubate for 10 minutes at room temperature.
4. Briefly vortex the tube and then do a quick spin (less than 5000xg) to concentrate the liquid at the bottom.
5. Store the suspended plasmid at -20°C. The DNA is stable for at least one year from date of shipping when stored at -20°C.

RefSeq: [NM_144978.1](#), [NP_659415.1](#)

RefSeq Size: 2196 bp

RefSeq ORF: 1998 bp

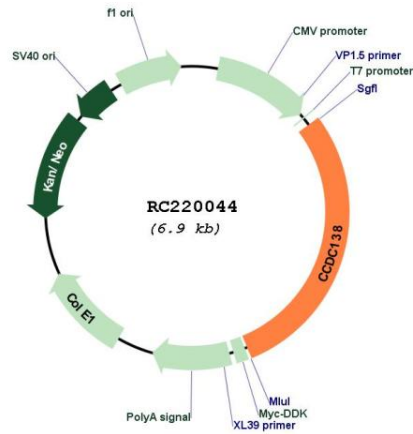
Locus ID: 165055

UniProt ID: [Q96M89](#)

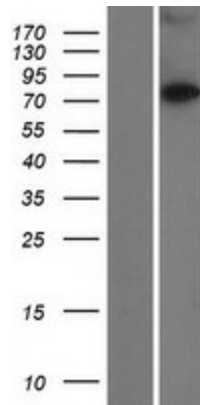
Cytogenetics: 2q13

MW: 76 kDa

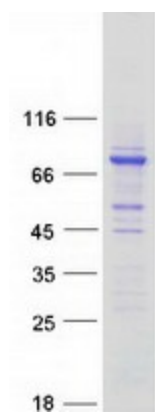
Product images:



Circular map for RC220044



Western blot validation of overexpression lysate (Cat# [LY408119]) using anti-DDK antibody (Cat# [TA50011-100]). Left: Cell lysates from untransfected HEK293T cells; Right: Cell lysates from HEK293T cells transfected with RC220044 using transfection reagent MegaTran 2.0 (Cat# [TT210002]).



Coomassie blue staining of purified CCDC138 protein (Cat# [TP320044]). The protein was produced from HEK293T cells transfected with CCDC138 cDNA clone (Cat# RC220044) using MegaTran 2.0 (Cat# [TT210002]).