

## Product datasheet for RC220041

### KLRF1 (NM\_016523) Human Tagged ORF Clone

#### Product data:

Product Type: Expression Plasmids  
 Product Name: KLRF1 (NM\_016523) Human Tagged ORF Clone  
 Tag: Myc-DDK  
 Symbol: KLRF1  
 Synonyms: CLEC5C; NKp80  
 Mammalian Cell Selection: Neomycin  
 Vector: pCMV6-Entry (PS100001)  
 E. coli Selection: Kanamycin (25 ug/mL)  
 ORF Nucleotide Sequence: >RC220041 representing NM\_016523  
 Red=Cloning site Blue=ORF Green=Tags(s)

TTTTGTAATACGACTCACTATAGGGCGGCCGGAATTCGTCGACTGGATCCGGTACCGAGGAGATCTGCC  
 GCC**CGATCGCC**

ATGCAAGATGAAGAAAGATACATGACATTGAATGTACAGTCAAAGAAAAGGAGTTCTGCCAAACATCTC  
 AACTTACATTTAAAGATTATTCAGTGACGTTGCACTGGTATAAAATCTTACTGGGAATATCTGGAACCGT  
 GAATGGTATTCTCACTTTGACTTTGATCTCCTTGATCCTGTTGGTTTCTCAGGGAGTATTGCTAAAATGC  
 CAAAAAGGAAGTTGTTCAAATGCCACTCAGTATGAGGACACTGGAGATCTAAAAGTGAATAATGGCACAA  
 GAAGAAATATAAGTAATAAGGACCTTTGTCTCGAGATCTGCAGACCAGACAGTACTATGCCAATCAGA  
 ATGGCTCAAATACCAAGGAAGTGTATTGGTTCTCTAATGAGATGAAAAGCTGGAGTGACAGTTATGTG  
 TATTGTTTGAAAAGAAAATCTCATCTACTAATCATACATGACCAACTGAAATGGCTTTTATACAGAAAA  
 ACCTAAGACAATTAACCTACGTATGGATTGGGCTTAACCTTACCTCCTTGAAAATGACATGGACTTGGGT  
 GGATGGTTCTCCAATAGATTCAAAGATTTCTTCATAAAGGGACCAGCTAAAGAAAACAGCTGTGCTGCC  
 ATTAAGGAAAGCAAATTTTCTCTGAAACCTGCAGCAGTGTTCAAATGGATTTGTCAGTAT

**ACGCGT**ACGCGGCCGCTCGAGCAGAAACTCATCTCAGAAGAGGATCTGGCAGCAAATGATATCTGGATT  
 ACAAGGATGACGACGATAAGGTTTAA



[View online »](#)

**Protein Sequence:** >RC220041 representing NM\_016523  
Red=Cloning site Green=Tags(s)

MQDEERYMTLNVQSKKRSSAQTSQLTFKDYSVTLHWYKILLGISGTVNGILTTLTLLISLILLV SQGVLLKC  
 QKGSCSNATQYEDTGLKVNNGTRRNISNKDLCASRSADQTVLCQSEWLKYQGKCYWFSNEMKSWSDSYV  
 YCLERKSHLLIIHDQLEMAFIQKNLRQLNYVWIGLNFTSLKMTWTWVDGSPIDSKIFFIKGPAKENS  
 CAAIKESKIFSETCSSVFKWICQY

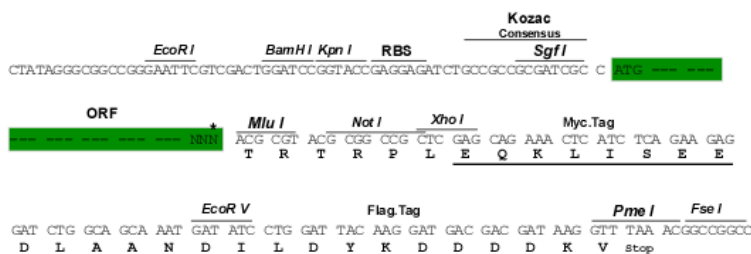
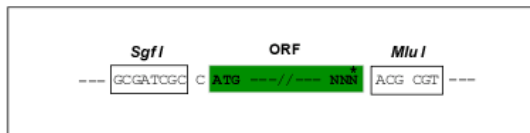
TRTRPLEQKLISEEDLAANDILDYKDDDDKV

**Chromatograms:** [https://cdn.origene.com/chromatograms/mk6094\\_f06.zip](https://cdn.origene.com/chromatograms/mk6094_f06.zip)

**Restriction Sites:** SgfI-MluI

**Cloning Scheme:**

Cloning sites used for ORF Shuttling:



\* The last codon before the Stop codon of the ORF

**ACCN:** NM\_016523

**ORF Size:** 693 bp

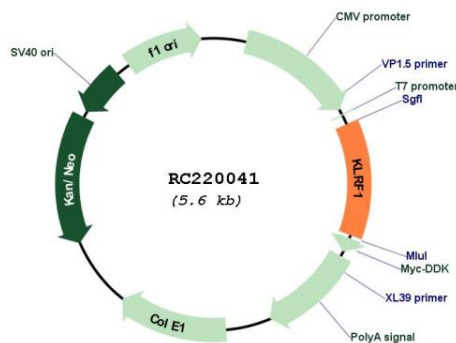
**OTI Disclaimer:** Due to the inherent nature of this plasmid, standard methods to replicate additional amounts of DNA in E. coli are highly likely to result in mutations and/or rearrangements. Therefore, OriGene does not guarantee the capability to replicate this plasmid DNA. Additional amounts of DNA can be purchased from OriGene with batch-specific, full-sequence verification at a reduced cost. Please contact our customer care team at [custsupport@origene.com](mailto:custsupport@origene.com) or by calling 301.340.3188 option 3 for pricing and delivery.

The molecular sequence of this clone aligns with the gene accession number as a point of reference only. However, individual transcript sequences of the same gene can differ through naturally occurring variations (e.g. polymorphisms), each with its own valid existence. This clone is substantially in agreement with the reference, but a complete review of all prevailing variants is recommended prior to use. [More info](#)

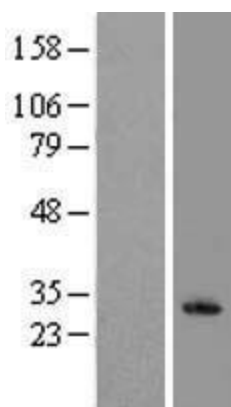
**OTI Annotation:** This clone was engineered to express the complete ORF with an expression tag. Expression varies depending on the nature of the gene.

<b>Components:</b>	The ORF clone is ion-exchange column purified and shipped in a 2D barcoded Matrix tube containing 10ug of transfection-ready, dried plasmid DNA (reconstitute with 100 ul of water).
<b>Reconstitution Method:</b>	<ol style="list-style-type: none"> <li>1. Centrifuge at 5,000xg for 5min.</li> <li>2. Carefully open the tube and add 100ul of sterile water to dissolve the DNA.</li> <li>3. Close the tube and incubate for 10 minutes at room temperature.</li> <li>4. Briefly vortex the tube and then do a quick spin (less than 5000xg) to concentrate the liquid at the bottom.</li> <li>5. Store the suspended plasmid at -20°C. The DNA is stable for at least one year from date of shipping when stored at -20°C.</li> </ol>
<b>RefSeq:</b>	<u><a href="#">NM_016523.3</a></u>
<b>RefSeq Size:</b>	1242 bp
<b>RefSeq ORF:</b>	696 bp
<b>Locus ID:</b>	51348
<b>UniProt ID:</b>	<u><a href="#">Q9NZS2</a></u>
<b>Cytogenetics:</b>	12p13.31
<b>Protein Families:</b>	Transmembrane
<b>MW:</b>	26.4 kDa
<b>Gene Summary:</b>	KLRF1, an activating homodimeric C-type lectin-like receptor (CLR), is expressed on nearly all natural killer (NK) cells and stimulates their cytotoxicity and cytokine release (Kuttruff et al., 2009 [PubMed 18922855]).[supplied by OMIM, Oct 2009]

### Product images:



Circular map for RC220041



Western blot validation of overexpression lysate (Cat# [LY413890]) using anti-DDK antibody (Cat# [TA50011-100]). Left: Cell lysates from untransfected HEK293T cells; Right: Cell lysates from HEK293T cells transfected with RC220041 using transfection reagent MegaTran 2.0 (Cat# [TT210002]).